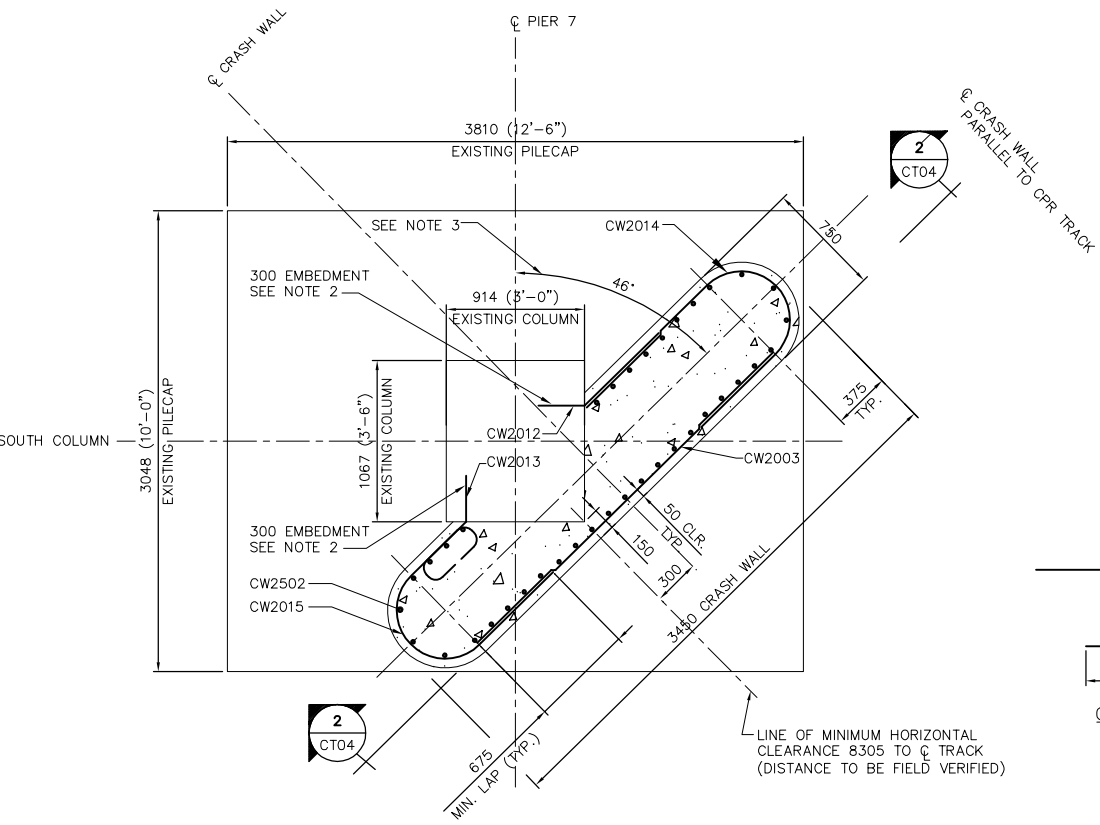
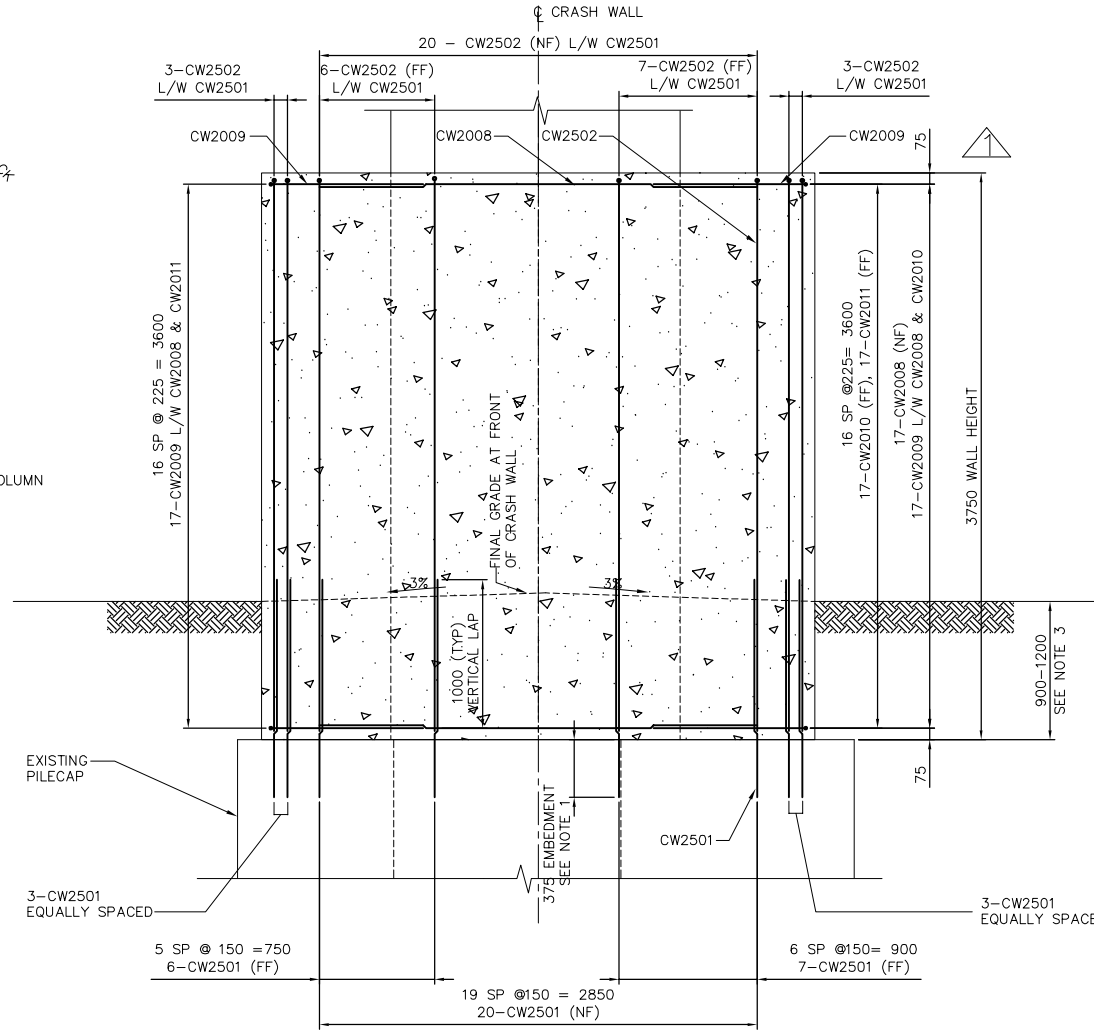


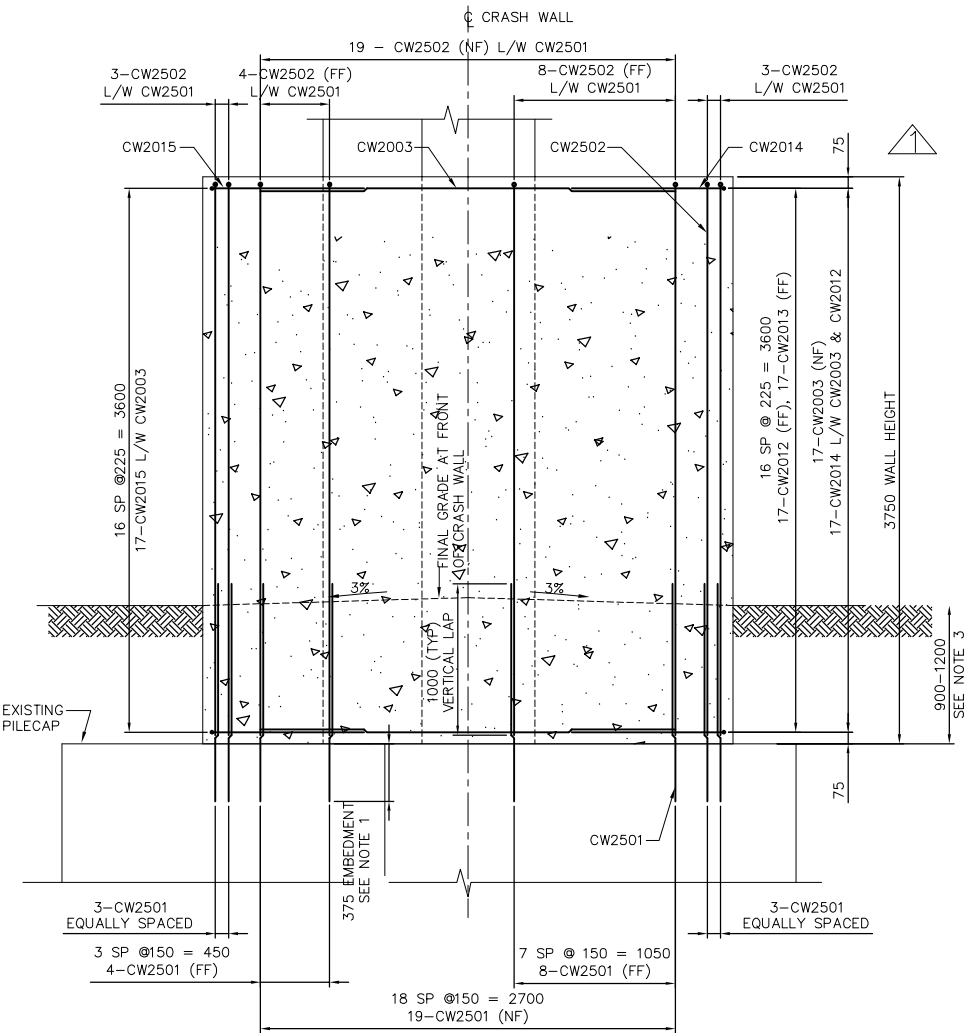
C DETAIL
CT02 SCALE 1:25



D DETAIL
CT02 SCALE 1:25



1 SECTION
CT04 SCALE 1:25



2 SECTION
CT04 SCALE 1:25

REINFORCING SCHEDULE PIER 6 - SOUTH COLUMN

BAR MARK	BAR SIZE	NUMBER OF BARS	BAR LENGTH (mm)	BAR MASS (kg)
CW2008	20M	17	2850	114
CW2009	20M	34	2375	190
CW2010	20M	17	1300	52
CW2011	20M	17	1050	42
CW2501	25M	39	1450	222
CW2502	25M	39	4050	634

TOTAL BAR MASS = 1254 kg
CONCRETE VOLUME = 8.70m³

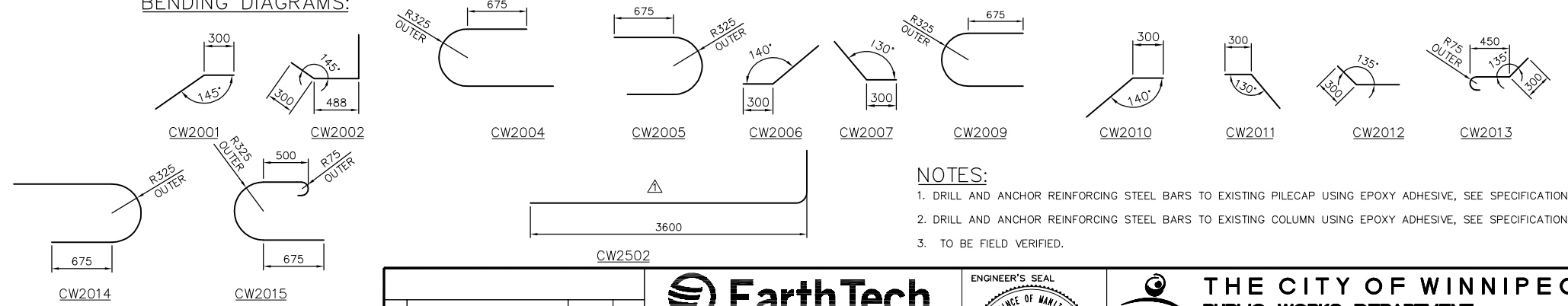
REINFORCING SCHEDULE PIER 7 - SOUTH COLUMN

BAR MARK	BAR SIZE	NUMBER OF BARS	BAR LENGTH (mm)	BAR MASS (kg)
CW2003	20M	17	2700	108
CW2012	20M	17	1000	40
CW2013	20M	17	1050	42
CW2014	20M	17	2800	112
CW2015	20M	17	2375	95
CW2501	25M	37	1450	210
CW2502	25M	37	4050	602

TOTAL BAR MASS = 1209 kg
CONCRETE VOLUME = 8.28m³

LEGENDS:
FF - FAR FACE
NF - NEAR FACE
EF - EACH FACE
L/W - LAP WITH

BENDING DIAGRAMS:



NOTES:

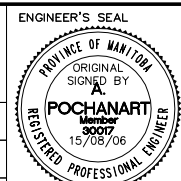
1. DRILL AND ANCHOR REINFORCING STEEL BARS TO EXISTING PILECAP USING EPOXY ADHESIVE, SEE SPECIFICATIONS.
2. DRILL AND ANCHOR REINFORCING STEEL BARS TO EXISTING COLUMN USING EPOXY ADHESIVE, SEE SPECIFICATIONS.
3. TO BE FIELD VERIFIED.

APECA
Certificate of Authorization
Earth Tech Canada Inc.
No. 730 Expiry: April 30, 2007

NO.	REVISIONS	DATE	BY
01	ISSUED FOR ADDENDUM	06/08/31	KC
00	ISSUED FOR TENDER	06/08/15	JB



DESIGNED BY: AP	CHECKED BY: JEB
DRAWN BY: LD	APPROVED BY:
HOR. SCALE: AS NOTED	RELEASED FOR CONSTRUCTION BY: B. NEIRINCK, P.Eng.
VERTICAL: AS NOTED	
DATE: 2006/04/12	DATE: 2006/08/15



THE CITY OF WINNIPEG
PUBLIC WORKS DEPARTMENT
ENGINEERING DIVISION

SAFETY IMPROVEMENTS AT THE NAIRN AVENUE OVERPASS

CRASH WALL DETAILS AND SCHEDULE PIER 6 AND 7 SOUTH COLUMNS
BID OPPORTUNITY 281-2006
SHEET 4 OF 4
CITY DRAWING NUMBER B121-06-04