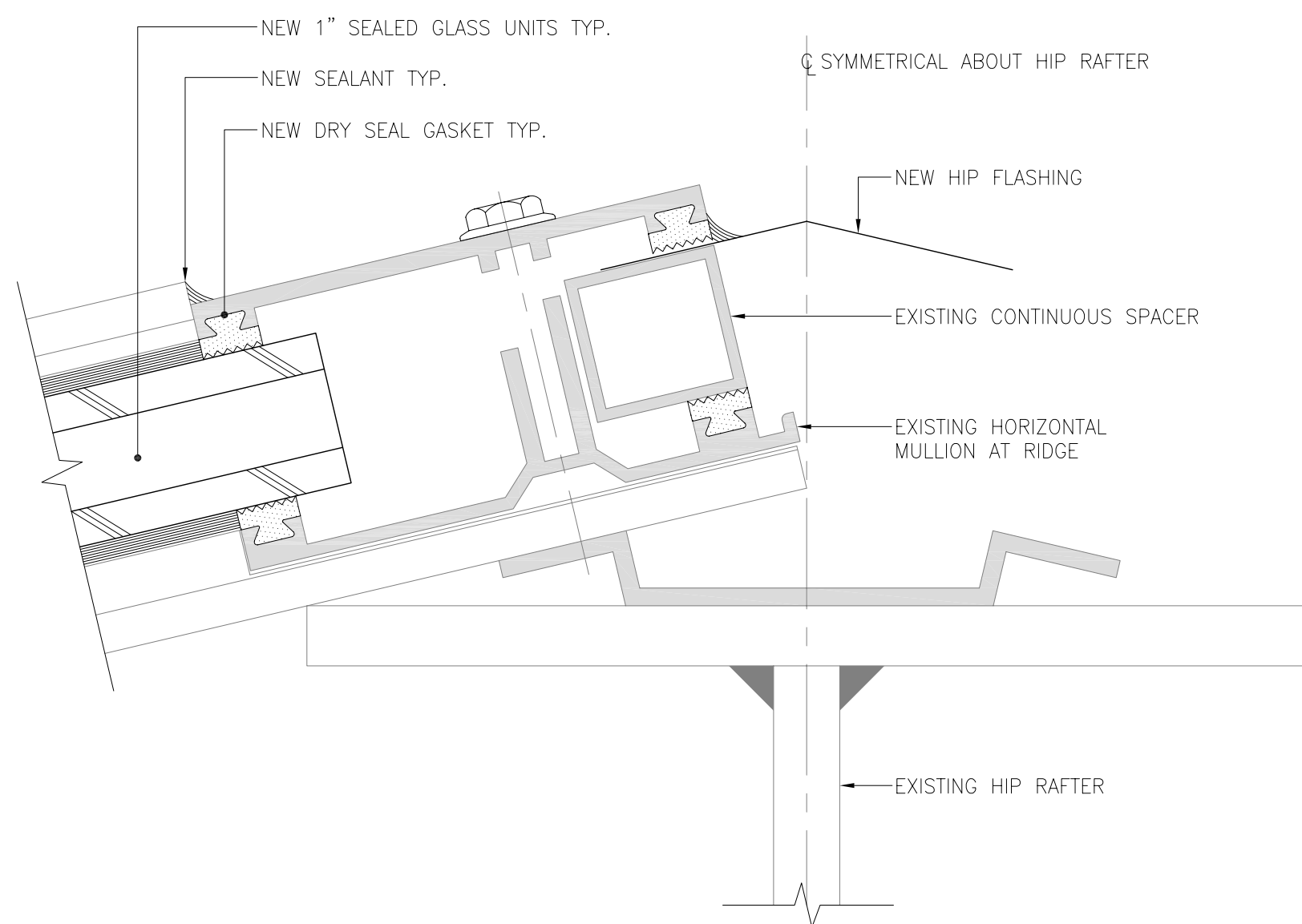
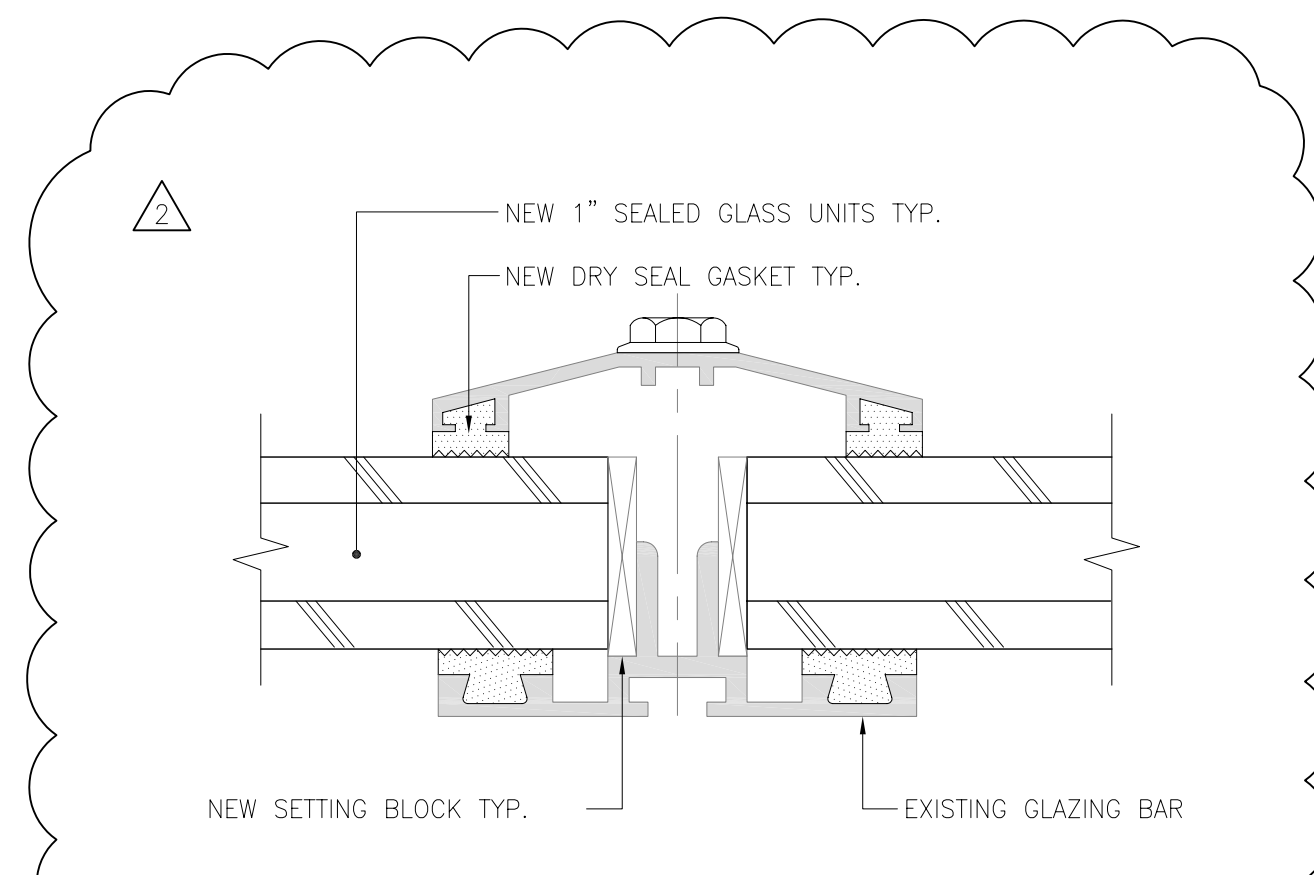
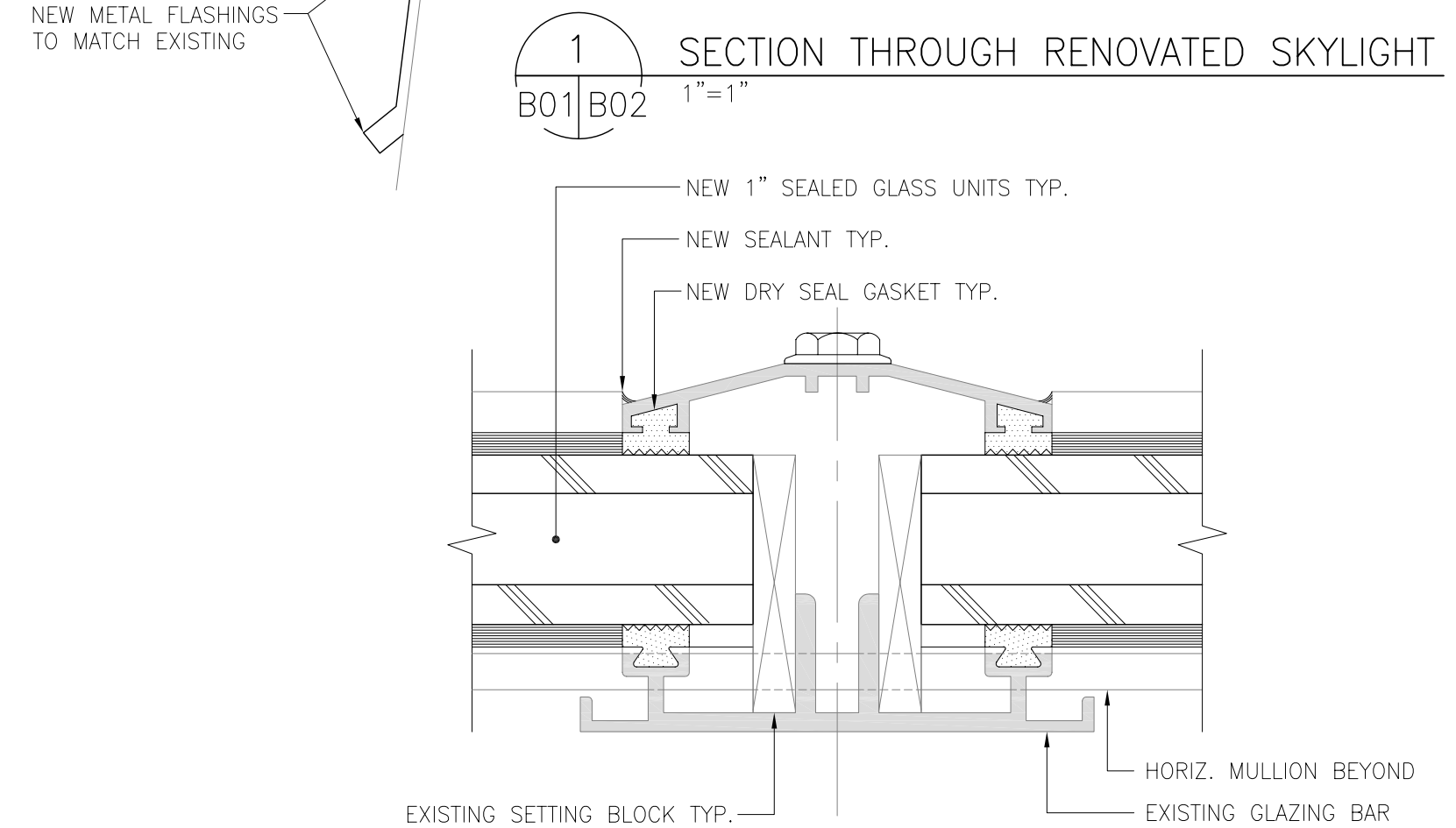
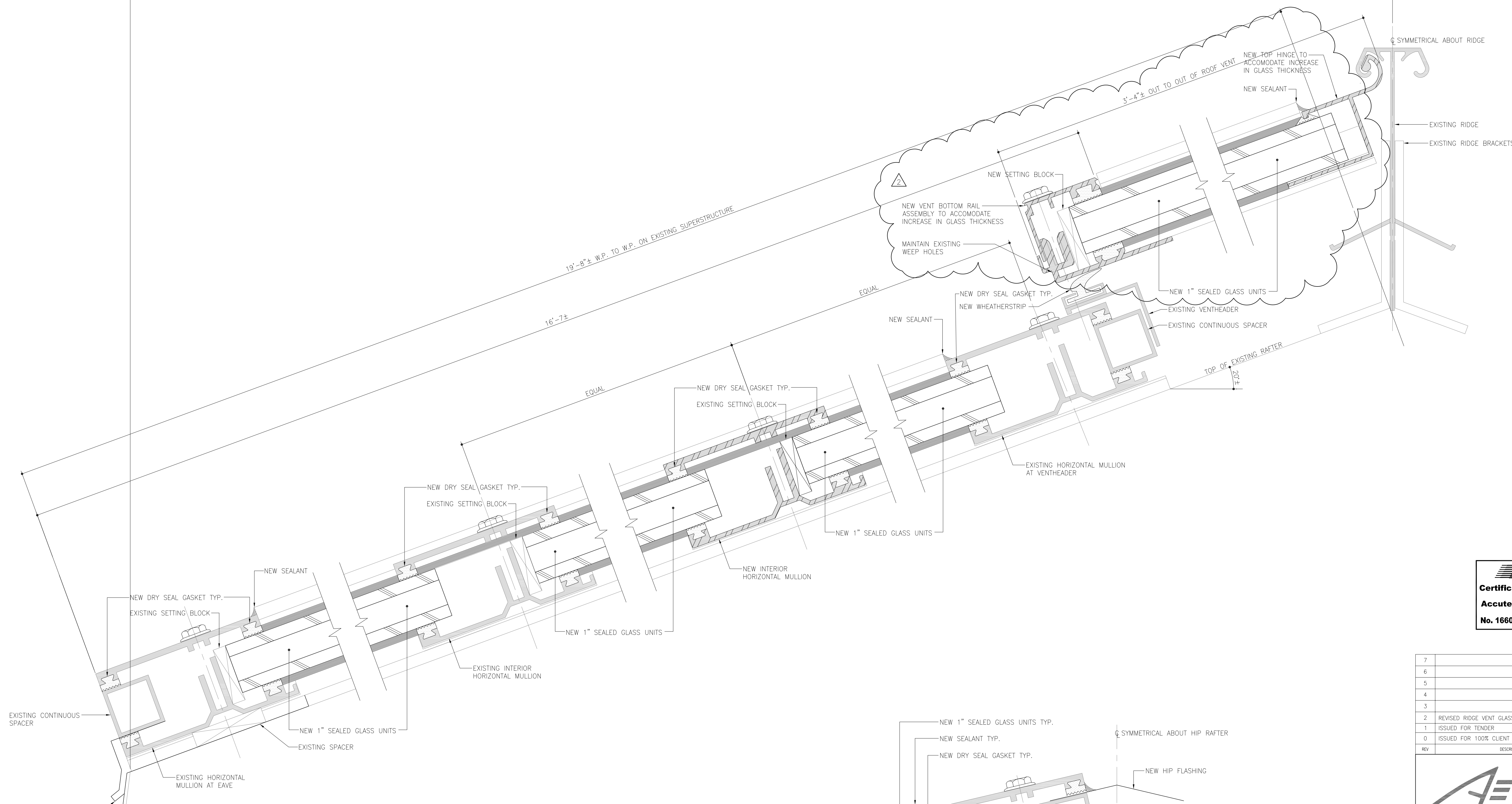


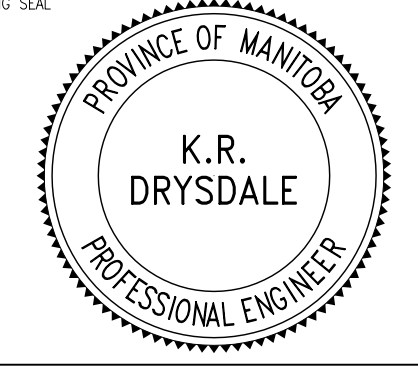
18'-5"± W.P. OF SUPERSTRUCTURE AT EAVE TO CENTELINE OF RIDGE



APEGM
Certificate of Authorization
Accutech Engineering Inc.
No. 1660 Expiry: April 30, 2006

7				
6				
5				
4				
3				
2	REVISED RIDGE VENT GLASS TO 1" SEALED UNITS	PG	PG	APR 19 2006
1	ISSUED FOR TENDER	ML	PG	MAR 24 2006
0	ISSUED FOR 100% CLIENT REVIEW	ML	PG	MAR 23 2006
REV	DESCRIPTION	OWN	APP	REV DATE

Accutech Engineering Inc.
Tomorrow's Technology Today
605-287 Broadway, Winnipeg, Manitoba Canada R3C 0R9
Phone 204.944.1355 Fax 204.944.1444
www.accutecheng.ca



CITY OF WINNIPEG
ASSINIBOINE PARK CONSERVATORY

DISPLAY HOUSE GLAZING REPLACEMENT
SKYLIGHT GLAZING SECTIONS AND DETAILS

DRAWN BY ML	CHECKED BY PG	DATE APR 19 2006	SHEET NO. B02
DESIGNED BY PG	CHECKED BY KD	SCALE AS NOTED	REVISION NO. 2

W:\Engineering Projects\A185 - City of Winnipeg\A185 - 0027 - Assiniboine Park Conservatory Facility Glazing Replacement 2005\Drawings\ADDENDUM #1\B02 - DISPLAY HOUSE GLAZING SECTIONS AND DETAILS - APRIL 19 2006.dwg