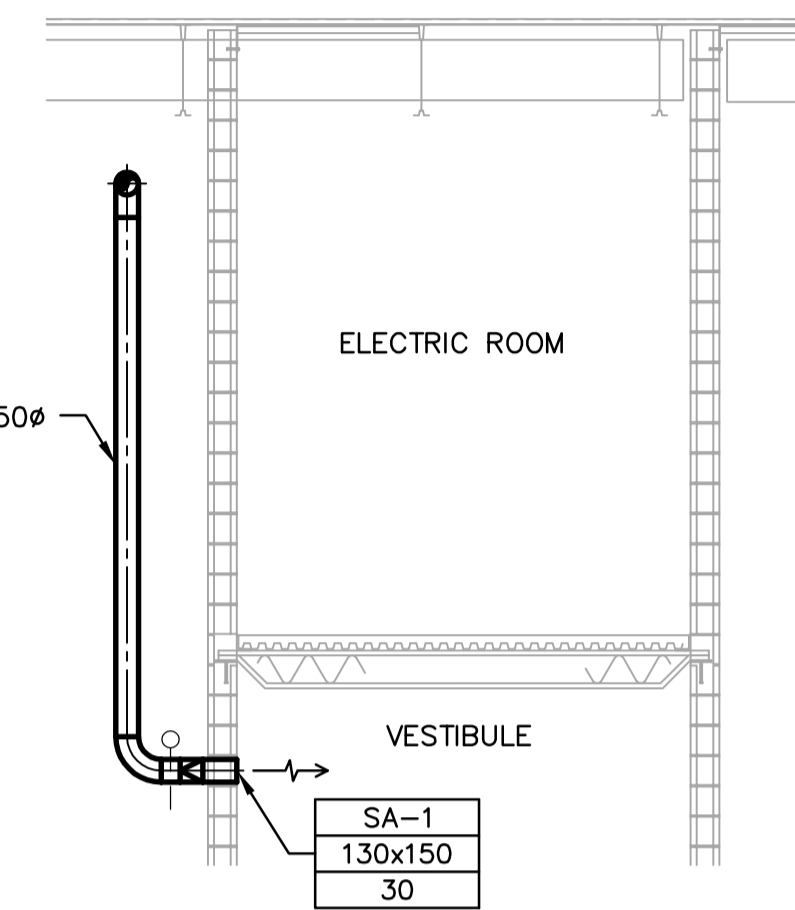
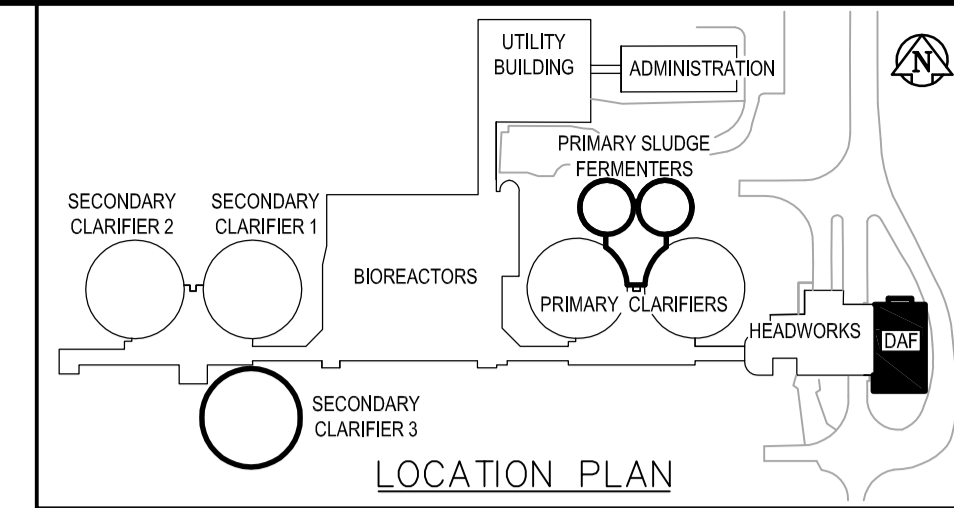


MEZZANINE VENTILATION PLAN
SCALE: 1:50



- DRAWING NOTES**
- HOUSE KEEPING PADS FOR T600-MUA & T605-MUA.
 - 250mm COMBUSTION AIR DUCTS FOR TWO BOILERS.
 - 40mm COMPRESSED AIR PIPE TO DAF TANKS.
 - EXHAUST DUCT FROM DAF TANKS.
 - REMOVABLE PIECE.
 - 360mm T650-GH AND T655-GH BOILER FLUE VENT.
 - FOR CONTINUATION SEE DRAWING HM1.01.
 - T600-SF-UFD, T600-EF-UFD, T605-SF-UFD & T605-EF-VFD.
 - PROVIDE 50mm EXTERNAL THERMAL INSULATION FOR A FULL DISTANCE.
 - 400mm GOOSENECK INTAKE ON ROOF c/w MOTORIZED DAMPER.
 - REFRIGERANT LINES DOWN FROM CONDENSING UNIT TO COOLING COIL.
 - FLEXIBLE CONNECTION. TYPICAL.
 - 400x400 RELIEF AIR DUCT RISING TO RELIEF AIR HOOD ON ROOF c/w BACK DRAFT DAMPER. TERMINATE INTAKE OPENING APPROX. 600mm BELOW ROOF DECK.
 - REFER TO DRAWING HM2.01 FOR CONTINUATION.
 - EXTEND GAS PRV VENT UP THROUGH PITCH POCKET ON ROOF.
 - UNIT HEATER T620-UH SHALL BE SECURELY MOUNTED AS HIGH AS POSSIBLE TO THE SIDE OF DAF THICKENER TANK 2.

- GENERAL NOTES**
- COORDINATE WITH OTHER TRADES SO AS TO PREVENT CONFLICTS.
 - ALL DUCTWORK SHALL BE SUPPORTED AND SUSPENDED AS PER SPECIFICATIONS AND LOCAL CODES (SEE DETAILS).
 - ALL DUCTWORK TO BE STAINLESS STEEL CONSTRUCTION.



| | | | |
|---|--------------------|---|------|
| <p>EarthTech A Tyco International Ltd. Company</p> | | ENGINEER'S SEAL ORIGINAL SIGNED BY A. BURACHYNSKY 2006/04/26 | |
| DESIGNED BY | PVL/LJW | CHECKED BY | PVL |
| DRAWN BY | LJW | APPROVED BY | JEH |
| HOR. SCALE: 1:50 VERTICAL SCALE: | | RELEASED FOR CONSTRUCTION BY: J. VEILLEUX | |
| NO. REVISIONS | DATE | BY | DATE |
| 02 | 21-2006 ADDENDUM 4 | 06/06/02 | DC |
| 01 | 21-2006 ADDENDUM 3 | 06/05/19 | LJW |
| 00 | ISSUED FOR TENDER | 06/04/26 | DC |
| DATE | | DATE | |
| 2006/01/04 | | 2006/04/26 | |

THE CITY OF WINNIPEG
 WATER AND WASTE DEPARTMENT
 ENGINEERING DIVISION

WEWPC
 BIOLOGICAL NUTRIENT REMOVAL UPGRADE
 CONTRACT 3

MECHANICAL
 AREA T - DAF THICKENER BUILDING
 MEZZANINE VENTILATION PLAN

CITY FILE NUMBER
 SHEET OF
 CITY DRAWING NUMBER

CONSULTANT DRAWING NO.
 TM2.02