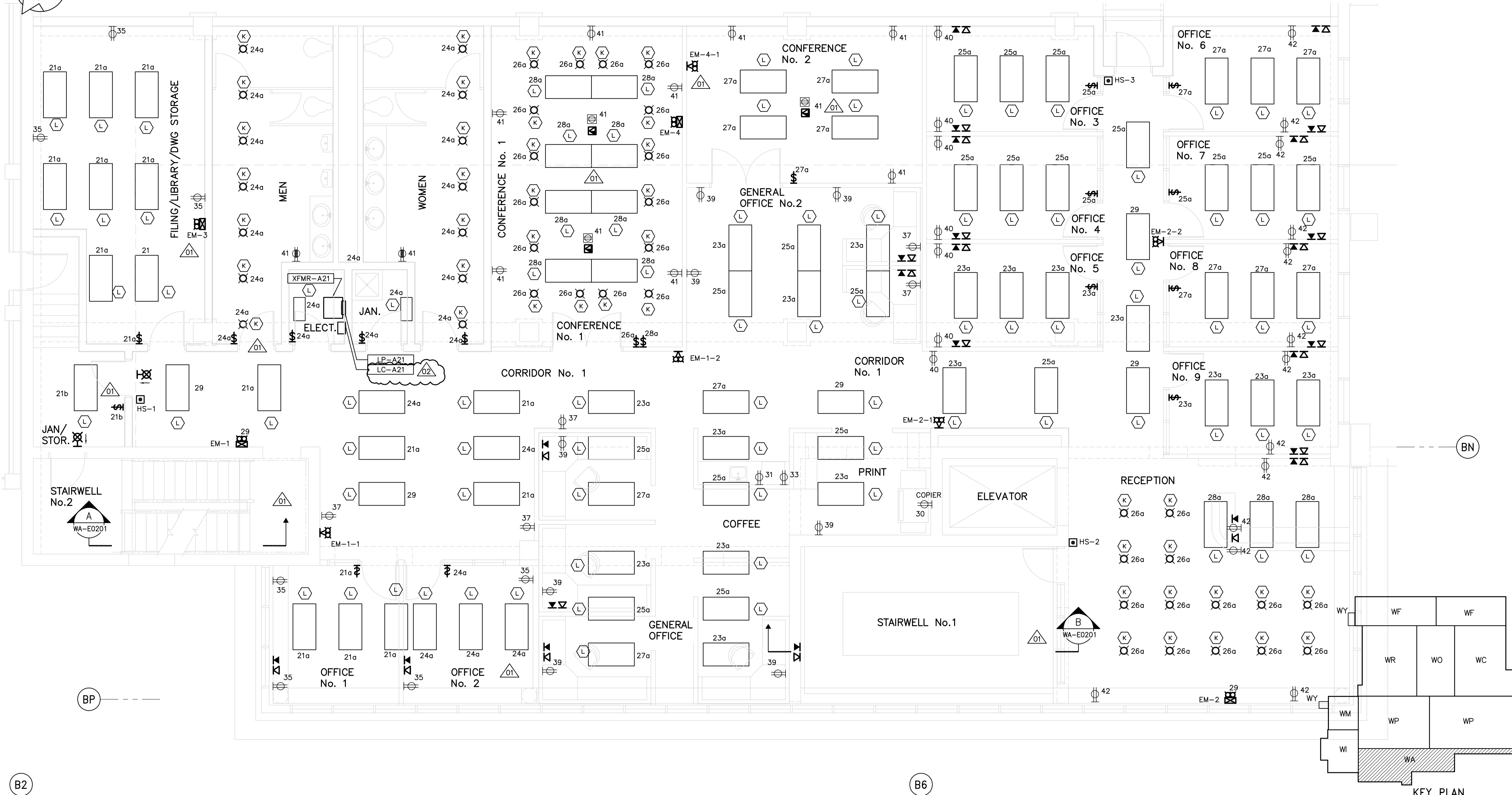
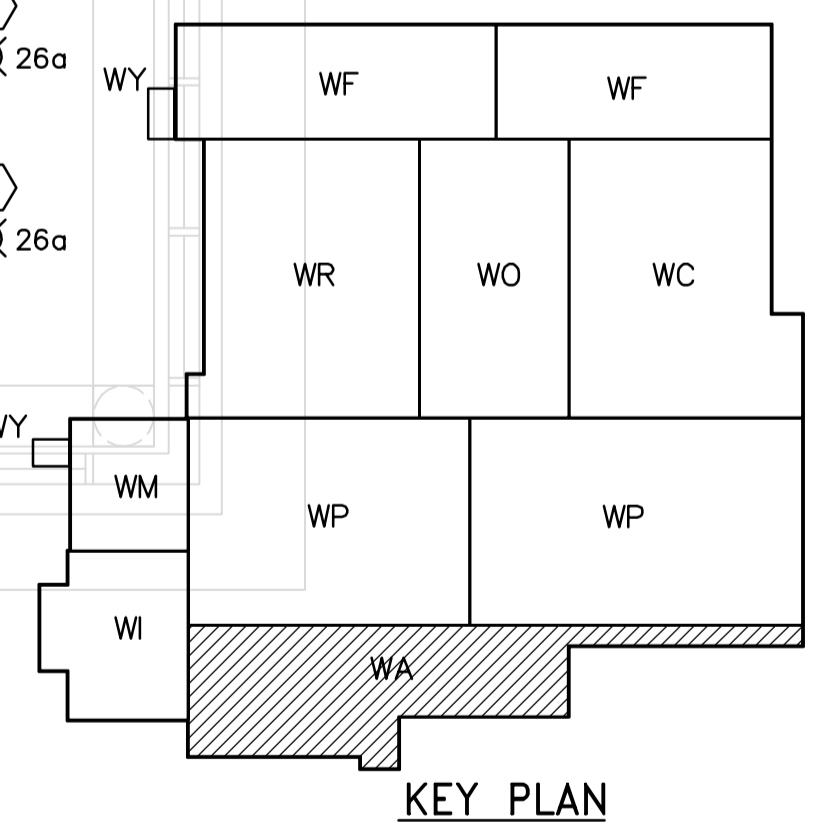
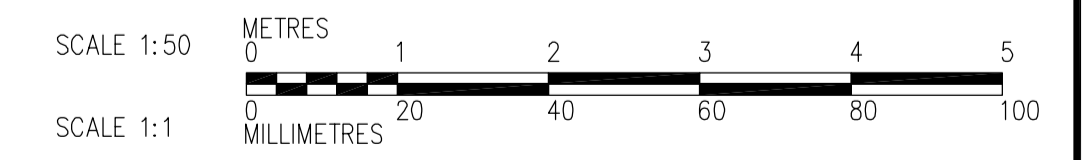


NOTES
1. ALL 120V AND 208V LOADS ARE FED FROM LP-A21

ADMINISTRATION AREA



1 SECOND FLOOR POWER AND LIGHTING PLAN
WA-E0113 1:50



APECA
Certificate of Authorization
CH2M HILL Canada Ltd.
No. 1441 Expiry: April 30, 2007

| | | | |
|---------------|---------------------|-------------------------------|---------------|
| B.M. ELEV. | | | |
| DESIGNED BY | PF | CHECKED BY | ND |
| DRAWN BY | TL | APPROVED BY | AHL |
| SCALE: | 1:50 | RELEASED FOR CONSTRUCTION BY: | R. SOROKOWSKI |
| NO. REVISIONS | DATE | DATE | DATE |
| 02 | 742-2005 ADDENDUM 4 | 06/05/12 | LL |
| 01 | 742-2005 ADDENDUM 3 | 06/05/05 | LL |
| 00 | ISSUED FOR TENDER | 06/03/29 | LL |
| NO. | REVISIONS | DATE | BY |
| | | 2006/02/07 | |

CH2MHILL
Frederickson Cooper
ARCHITECTS

EarthTech
A Tyco International Ltd. Company

ENGINEER'S SEAL
ORIGINAL SIGNED BY
L.D. LLEWELLYN
2006/03/29

THE CITY OF WINNIPEG
WATER AND WASTE DEPARTMENT
ENGINEERING DIVISION

WATER TREATMENT PLANT
ADMINISTRATION AREA
MECHANICAL AND ELECTRICAL

ELECTRICAL
ADMINISTRATION AREA
SECOND FLOOR POWER AND LIGHTING PLAN

CITY FILE NUMBER
SHEET OF
CITY DRAWING NUMBER
1-0601A-A-E0401-001-020

CONSULTANT DRAWING NO.
WA-E0401