

WATER SERVICE INFORMATION

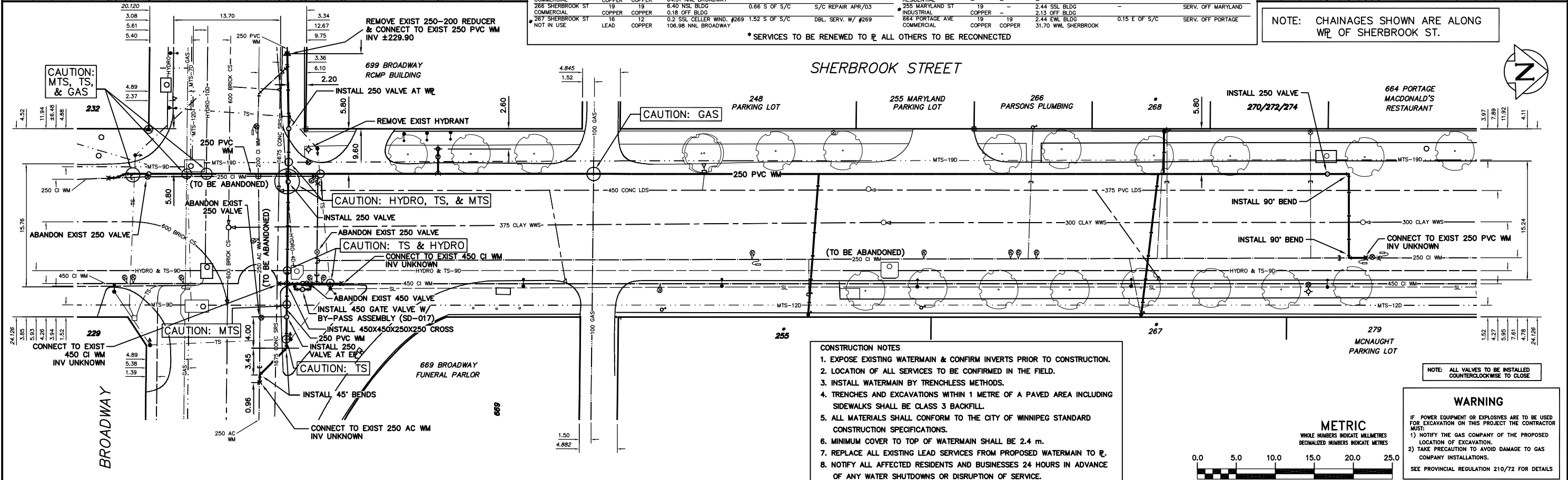
ADDRESS	SIZE (mm) & TYPE (STREET) (PROP)	SIZE (mm) & TYPE (PROP)	SHORT & LONG MEASUREMENT	CORP. LOCATION	REMARKS
669 BROADWAY COMMERCIAL	25 COPPER	25 LEAD	16.15 W OF EBL 4.57 OFF BLDG	17.37 W OF FURBY	RE-TAPPED TO NEW MAIN SERV. OFF BROADWAY
699 BROADWAY COMMERCIAL	25 COPPER	25 COPPER	7.32 W OF WBL 7.92 OFF BLDG	OPP S/C	S/C REPAIR FEB/04 SERV. OFF BROADWAY
248 SHERBROOK ST COMMERCIAL	25 COPPER	25 COPPER	16.20 SNL BLDG 64.31>NNL BROADWAY	OPP S/C	LOT 332, 333, 334
255 SHERBROOK ST COMMERCIAL	19 COPPER	19 COPPER	6.40>NNL BLDG	0.66 S OF S/C	S/C REPAIR APR/03
287 SHERBROOK ST NOT IN USE	12 LEAD	12 COPPER	0.2 SSL CELLER WIND. #269 106.98>NNL BROADWAY	1.52 S OF S/C	DBL. SERV. W/ #269

* SERVICES TO BE RENEWED TO R ALL OTHERS TO BE RECONNECTED

WATER SERVICE INFORMATION

ADDRESS	SIZE (mm) & TYPE (STREET) (PROP)	SIZE (mm) & TYPE (PROP)	SHORT & LONG MEASUREMENT	CORP. LOCATION	REMARKS
268 SHERBROOK ST RESIDENTIAL	12 LEAD	19 COPPER	3.05 SNL HSE 110.0>NNL BROADWAY	0.92 S OF S/C	SERV. REPAIR SEP/73
268 SHERBROOK ST COMMERCIAL	19 COPPER	12 COPPER	2.59>NNL HSE 110.34>NNL BROADWAY	OPP S/C	SERV. TO WORKSHOP
274 SHERBROOK ST COMMERCIAL	50 COPPER	50 COPPER	1.52 SNL BLDG 123.14 SSL PORTAGE	OPP S/C	AKA #270 & #272
278 SHERBROOK ST RESIDENTIAL	-	-	-	-	-
255 MARYLAND ST INDUSTRIAL	19 COPPER	19 COPPER	2.44 SSL BLDG 2.13 OFF BLDG	-	SERV. OFF MARYLAND
664 PORTAGE AVE COMMERCIAL	19 COPPER	19 COPPER	2.44>NNL BLDG	0.15 E OF S/C	SERV. OFF PORTAGE
31.70 WML SHERBROOK	-	-	-	-	-

NOTE: CHAINAGES SHOWN ARE ALONG WR OF SHERBROOK ST.

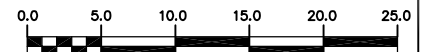


- CONSTRUCTION NOTES**
- EXPOSE EXISTING WATERMAIN & CONFIRM INVERTS PRIOR TO CONSTRUCTION.
 - LOCATION OF ALL SERVICES TO BE CONFIRMED IN THE FIELD.
 - INSTALL WATERMAIN BY TRENCHLESS METHODS.
 - TRENCHES AND EXCAVATIONS WITHIN 1 METRE OF A PAVED AREA INCLUDING SIDEWALKS SHALL BE CLASS 3 BACKFILL.
 - ALL MATERIALS SHALL CONFORM TO THE CITY OF WINNIPEG STANDARD CONSTRUCTION SPECIFICATIONS.
 - MINIMUM COVER TO TOP OF WATERMAIN SHALL BE 2.4 m.
 - REPLACE ALL EXISTING LEAD SERVICES FROM PROPOSED WATERMAIN TO R.
 - NOTIFY ALL AFFECTED RESIDENTS AND BUSINESSES 24 HOURS IN ADVANCE OF ANY WATER SHUTDOWNS OR DISRUPTION OF SERVICE.

NOTE: ALL VALVES TO BE INSTALLED COUNTERCLOCKWISE TO CLOSE

METRIC

WHOLE NUMBERS INDICATE MILLIMETRES
DECIMALIZED NUMBERS INDICATE METRES



EXISTING	LEGEND-PLAN	PROPOSED	EXISTING	LEGEND-PLAN	PROPOSED	EXISTING	LEGEND-PROFILE	PROPOSED
200 WM	WATERMAIN	200 WM	SL, HYDRO	SL, HYDRO	150 WM	WATERMAIN	150 WM	
525 LDS	LAND DRAINAGE SEWER	525 LDS	TRAFFIC SIGNALS	TRAFFIC SIGNALS	300 LGS	LAND DRAINAGE SEWER	300 LGS	
375 WWS	WASTEWATER SEWER	375 WWS	GAS	GAS	250 WWS	WASTEWATER SEWER	250 WWS	
O	MANHOLE	●	SURVEY BAR	SURVEY BAR	⊙	PROFILE	⊙	
□	CATCH BASIN	■	FENCE	FENCE	⊕	GROUND ABOVE PIPE	⊕	
▽	CURB INLET	▽	POLE - HYDRO, MTS	POLE - HYDRO, MTS				
△	REDUCER	△	CURB STOP	CURB STOP				
X	COUPLING	X	GUY ANCHOR	GUY ANCHOR				
U	ANODE	U	LIGHT STANDARD	LIGHT STANDARD				
○	HYDRANT	○	TREE	TREE				
○	VALVE	○						

LOCATION APPROVED	FIELD BOOK #:
UNDERGROUND STRUCTURES	POSTED TO LBS:
SUPV. U/G STRUCTURES COMMITTEE	DATE:
DATE:	DATE:

NOTE: LOCATION OF UNDERGROUND STRUCTURES AS SHOWN ARE BASED ON THE BEST INFORMATION AVAILABLE BUT NO GUARANTEE IS GIVEN THAT ALL EXISTING UTILITIES ARE SHOWN OR THAT THE GIVEN LOCATIONS ARE EXACT. CONFIRMATION OF EXISTENCE AND EXACT LOCATION OF ALL SERVICES MUST BE OBTAINED FROM THE INDIVIDUAL UTILITIES BEFORE PROCEEDING WITH CONSTRUCTION.

B.M. ELEV.	DESIGNED BY	NC/SC	CHECKED BY	TW
	DRAWN BY	CJH	APPROVED BY	KZ
	HOR. SCALE	1:250	RELEASED FOR CONSTRUCTION	
	VERTICAL SCALE	1:50		
NO. REVISIONS	DATE	2004 08 11	DATE	

ENGINEER'S SEAL
ORIGINAL SIGNED BY K.R. ZUREK
04/08/11
BID OPPORTUNITY: 405-2004
FILENAME: Sherbrook.dwg
PLOT DATE: 2004 08 13

THE CITY OF WINNIPEG
WATER AND WASTE DEPARTMENT
2004 WATERMAIN RENEWALS
SHERBROOK STREET
BROADWAY TO
150 m>NNL BROADWAY
SHEET 9 OF 9
CITY DRAWING NUMBER
D-8583