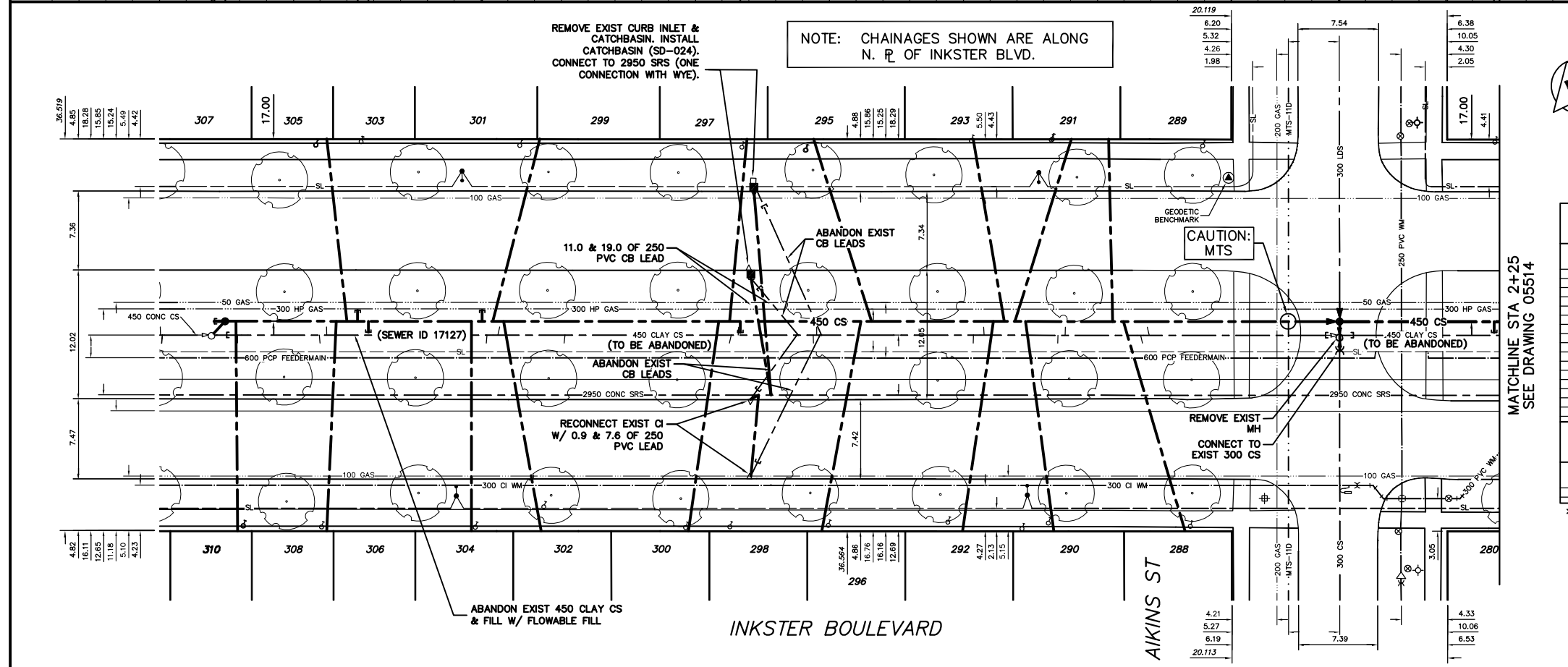


- CONSTRUCTION NOTES:**
- SEWER TO BE RENEWED OFF-LINE BY TRENCHLESS METHODS.
 - CONFIRM THE LOCATION OF ALL SEWER SERVICES.
 - RENEW SEWER SERVICES TO R.
 - BACKFILL UNDER PAVEMENT, IN SIDEWALKS, & WITHIN 1.0 m OF PAVEMENT TO BE CLASS 3.
 - BACKFILL IN BOULEVARD TO BE CLASS 5.
 - SEWER SERVICE RISERS TO BE INSTALLED WHEN COMBINED SEWER EXCEEDS 4.25 m IN DEPTH.
 - INSTALL TEE INCLUDING RISERS & PLUG FOR FUTURE SERVICE CONNECTION OF EXISTING WYED SEWER SERVICES AS SHOWN ON DRAWINGS OR AS DIRECTED BY THE CONTRACT ADMINISTRATOR.
 - CATCHBASIN LEADS TO BE INSTALLED AT MINIMUM 1.0% SLOPE OR AS DIRECTED BY THE CONTRACT ADMINISTRATOR.



SEWER SERVICE INFORMATION

ADDRESS	SIZE	R DIST	JUNCTION TIE
265 INKSTER BLVD	5.18 E OF WL		
RESIDENTIAL	17.88 E MH AIKINS		
276 INKSTER BLVD	1.62 W OF WL #276		
RESIDENTIAL	23.78 E MH AIKINS		
280 INKSTER BLVD	1.62 W OF WL #276		
RESIDENTIAL	23.78 E MH AIKINS		
288 INKSTER BLVD	4.42 W OF EL		
RESIDENTIAL	18.55 W MH AIKINS		
289 INKSTER BLVD	1.50 W OF WL		
RESIDENTIAL	17.76 W MH AIKINS		
290 INKSTER BLVD	3.62 E OF WL		
RESIDENTIAL	26.27 W MH AIKINS		
291 INKSTER BLVD	4.32 E OF WL		
RESIDENTIAL	25.80 W MH AIKINS		
292 INKSTER BLVD	5.79 E OF WL		
RESIDENTIAL	34.14 W MH AIKINS		
293 INKSTER BLVD	3.68 W OF EL		
RESIDENTIAL	33.15 W MH AIKINS		
295 INKSTER BLVD	4.50 W OF WL		
RESIDENTIAL	48.77 W MH AIKINS		
296 INKSTER BLVD	1.50 E OF WL		
RESIDENTIAL	49.10 W MH AIKINS		
297 INKSTER BLVD	1.90 W OF EL		
RESIDENTIAL	56.08 W MH AIKINS		
298 INKSTER BLVD	2.29 W OF WL #298		
RESIDENTIAL	56.74 W MH AIKINS		
299 INKSTER BLVD	0.21 E OF WL #299		
RESIDENTIAL	78.50 W MH AIKINS		
300 INKSTER BLVD	2.29 W OF WL #298		
RESIDENTIAL	56.74 W MH AIKINS		
301 INKSTER BLVD	0.21 E OF WL #299		
RESIDENTIAL	78.50 W MH AIKINS		
302 INKSTER BLVD	6.31 W OF EL		
RESIDENTIAL	72.24 W MH AIKINS		
303 INKSTER BLVD	1.07 W OF EL #303		
RESIDENTIAL	94.49 W MH AIKINS		
304 INKSTER BLVD	3.39 W OF EL		
RESIDENTIAL	79.53 W MH AIKINS		
306 INKSTER BLVD	0.12 E OF WL #306		
RESIDENTIAL	95.05 W MH AIKINS		

SEWER JUNCTION INFORMATION
 1ST MH E. OF SALTER ST. (1+04.86) TO *
 MH @ AIKINS ST. (2+10.07)

DISTANCE FROM 1ST MH E. OF SALTER ST. (1+04.86)		
3.30 E	150'	SOUTH
3.90 E	150'	NORTH
11.50 E	150'	SOUTH
17.70 E	150'	SOUTH
33.40 E	150'	SOUTH
34.10 E	150'	SOUTH
48.80 E	150'	SOUTH
52.10 E	150'	NORTH
52.40 E	150'	SOUTH
56.40 E	150'	SOUTH
57.50 E	150'	NORTH
71.80 E	150'	SOUTH
78.40 E	150'	SOUTH
80.00 E	150'	NORTH
94.60 E	150'	SOUTH
95.40 E	150'	NORTH

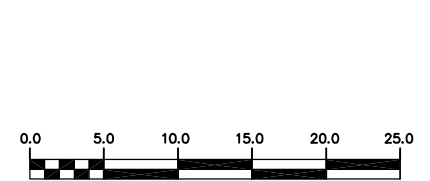
SEWER JUNCTION INFORMATION
 MH @ AIKINS ST. (2+10.07) TO *
 1ST MH E. OF SALTER ST. (3+11.11)

DISTANCE FROM MH @ AIKINS ST. (2+10.07)		
13.00 E	150'	SOUTH

* INFORMATION FROM SEWER VIDEO INSPECTION

SEWER SERVICE INFORMATION

ADDRESS	SIZE	R DIST	JUNCTION TIE
265 INKSTER BLVD	5.18 E OF WL		
RESIDENTIAL	17.88 E MH AIKINS		
276 INKSTER BLVD	1.62 W OF WL #276		
RESIDENTIAL	23.78 E MH AIKINS		
280 INKSTER BLVD	1.62 W OF WL #276		
RESIDENTIAL	23.78 E MH AIKINS		
288 INKSTER BLVD	4.42 W OF EL		
RESIDENTIAL	18.55 W MH AIKINS		
289 INKSTER BLVD	1.50 W OF WL		
RESIDENTIAL	17.76 W MH AIKINS		
290 INKSTER BLVD	3.62 E OF WL		
RESIDENTIAL	26.27 W MH AIKINS		
291 INKSTER BLVD	4.32 E OF WL		
RESIDENTIAL	25.80 W MH AIKINS		
292 INKSTER BLVD	5.79 E OF WL		
RESIDENTIAL	34.14 W MH AIKINS		
293 INKSTER BLVD	3.68 W OF EL		
RESIDENTIAL	33.15 W MH AIKINS		
295 INKSTER BLVD	4.50 W OF WL		
RESIDENTIAL	48.77 W MH AIKINS		
296 INKSTER BLVD	1.50 E OF WL		
RESIDENTIAL	49.10 W MH AIKINS		
297 INKSTER BLVD	1.90 W OF EL		
RESIDENTIAL	56.08 W MH AIKINS		
298 INKSTER BLVD	2.29 W OF WL #298		
RESIDENTIAL	56.74 W MH AIKINS		
299 INKSTER BLVD	0.21 E OF WL #299		
RESIDENTIAL	78.50 W MH AIKINS		
300 INKSTER BLVD	2.29 W OF WL #298		
RESIDENTIAL	56.74 W MH AIKINS		
301 INKSTER BLVD	0.21 E OF WL #299		
RESIDENTIAL	78.50 W MH AIKINS		
302 INKSTER BLVD	6.31 W OF EL		
RESIDENTIAL	72.24 W MH AIKINS		
303 INKSTER BLVD	1.07 W OF EL #303		
RESIDENTIAL	94.49 W MH AIKINS		
304 INKSTER BLVD	3.39 W OF EL		
RESIDENTIAL	79.53 W MH AIKINS		
306 INKSTER BLVD	0.12 E OF WL #306		
RESIDENTIAL	95.05 W MH AIKINS		



WARNING

IF POWER EQUIPMENT OR EXPLOSIVES ARE TO BE USED FOR EXCAVATION ON THIS PROJECT THE CONTRACTOR MUST:

- NOTIFY THE GAS COMPANY OF THE PROPOSED LOCATION OF EXCAVATION.
- TAKE PRECAUTION TO AVOID DAMAGE TO GAS COMPANY INSTALLATIONS.

SEE PROVINCIAL REGULATION 210/72 FOR DETAILS

200 WM	WATERMAIN	200 WM	SL, HYDRO	150 WM	WATERMAIN	150 WM
⊕	HYDRANT	⊕	MTS	+	HYDRANT	+
⊖	VALVE	⊖	TRAFFIC SIGNALS	X	VALVE	X
525 LDS	LAND DRAINAGE SEWER	525 LDS	GAS	50 GAS	300 LDS	LAND DRAINAGE SEWER
375 WWS	WASTEWATER SEWER	375 WWS	SURVEY BAR	250 WWS	WASTEWATER SEWER	250 WWS
○	MANHOLE	○	FENCE	X	○	PROFILE
□	CATCH BASIN	□	POLE - HYDRO, MTS	---	□	GROUND ABOVE PIPE
▽	CURB INLET	▽	CURB STOP	△	▽	DITCH (SOUTH & EAST)
+	JUNCTIONS	+	GUY ANCHOR	□	+	GUTTER (NORTH & WEST)
⊔	CULVERT	⊔	LIGHT STANDARD	□	⊔	
⊕	ANODE	⊕	TREE			
EXISTING	LEGEND-PLAN	PROPOSED	EXISTING	LEGEND-PLAN	PROPOSED	EXISTING

LOCATION APPROVED UNDERGROUND STRUCTURES

SUPV. U/G STRUCTURES COMMITTEE	DATE

NOTE:
 LOCATION OF UNDERGROUND STRUCTURES AS SHOWN ARE BASED ON THE BEST INFORMATION AVAILABLE BUT NO GUARANTEE IS GIVEN THAT ALL EXISTING UTILITIES ARE SHOWN OR THAT THE GIVEN LOCATIONS ARE EXACT. CONFIRMATION OF EXISTENCE AND EXACT LOCATION OF ALL SERVICES MUST BE OBTAINED FROM THE INDIVIDUAL UTILITIES BEFORE PROCEEDING WITH CONSTRUCTION.

CITY OF WINNIPEG WATER AND WASTE ENGINEERING DIVISION

DESIGNED BY	SC	CHECKED BY	TW
DRAWN BY	CJH	APPROVED BY	KZ
HOR. SCALE	1:250	RELEASED FOR CONSTRUCTION	
VERTICAL	1:50		
DATE	2004.08.11	DATE	

ENGINEER'S SEAL

ORIGINAL SIGNED BY K.R. ZUREK 04/08/11

BID OPPORTUNITY: 405-2004
 FILENAME: full_inkster.dwg
 PLOT DATE: 2004 08 13

THE CITY OF WINNIPEG WATER AND WASTE DEPARTMENT

2004 COMBINED SEWER RENEWALS AND ASSOCIATED WORKS

INKSTER BOULEVARD
 100 E OF E R SALTER STREET TO 11 E OF E R AIKINS STREET

SHEET 2 OF 9
 CITY DRAWING NUMBER 05513