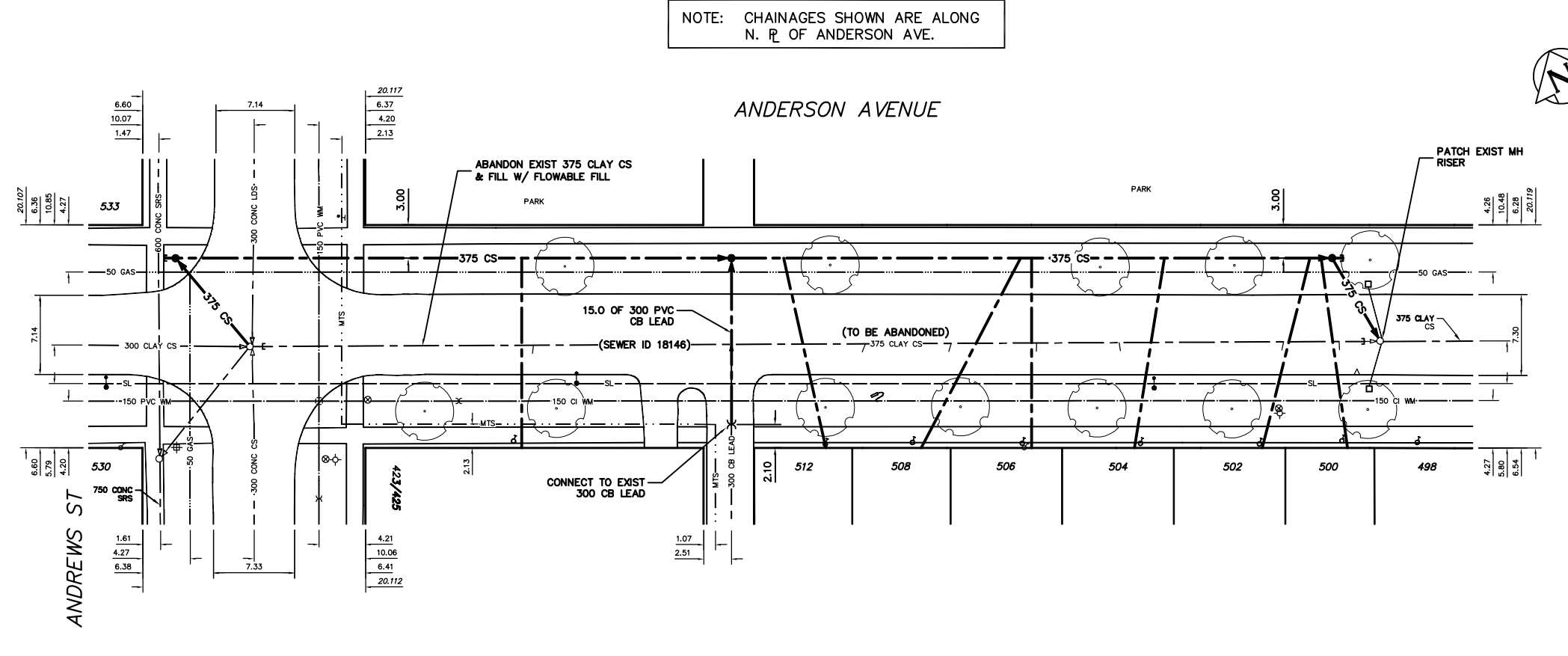


- CONSTRUCTION NOTES:**
- SEWER TO BE RENEWED OFF-LINE BY TRENCHLESS METHODS.
 - CONFIRM THE LOCATION OF ALL SEWER SERVICES.
 - RENEW SEWER SERVICES TO R.
 - BACKFILL UNDER PAVEMENT, IN SIDEWALKS, & WITHIN 1.0 m OF PAVEMENT TO BE CLASS 3.
 - BACKFILL IN BOULEVARD TO BE CLASS 5.
 - SEWER SERVICE RISERS TO BE INSTALLED WHEN COMBINED SEWER EXCEEDS 4.25 m IN DEPTH.
 - INSTALL TEE INCLUDING RISERS & PLUG FOR FUTURE SERVICE CONNECTION OF EXISTING WYED SEWER SERVICES AS SHOWN ON DRAWINGS OR AS DIRECTED BY THE CONTRACT ADMINISTRATOR.
 - CATCHBASIN LEADS TO BE INSTALLED AT MINIMUM 1.0% SLOPE OR AS DIRECTED BY THE CONTRACT ADMINISTRATOR.

NOTE: CHAINAGES SHOWN ARE ALONG N. R. OF ANDERSON AVE.



SEWER SERVICE INFORMATION

ADDRESS	SIZE	R. DIST	JUNCTION TIE
498 ANDERSON AVE	RESIDENTIAL	5.75 W OF EL.	
500 ANDERSON AVE	RESIDENTIAL	6.30 W 1ST MH W ANDREWS	
502 ANDERSON AVE	RESIDENTIAL	2.44 W OF EL.	
504 ANDERSON AVE	RESIDENTIAL	98.30 E MH ANDREWS	
506 ANDERSON AVE	RESIDENTIAL	2.10 W OF EL.	
508 ANDERSON AVE	RESIDENTIAL	93.30 E MH ANDREWS	
512 ANDERSON AVE	RESIDENTIAL	3.55 W OF EL.	
514 ANDERSON AVE	RESIDENTIAL	78.45 E MH ANDREWS	
516 ANDERSON AVE	RESIDENTIAL	2.74 W OF EL.	
518 ANDERSON AVE	RESIDENTIAL	71.02 E MH ANDREWS	
520 ANDERSON AVE	RESIDENTIAL	2.65 W OF EL.	
522 ANDERSON AVE	RESIDENTIAL	63.30 E MH ANDREWS	
524 ANDERSON AVE	RESIDENTIAL	2.40 W OF EL.	
526 ANDERSON AVE	RESIDENTIAL	55.56 E MH ANDREWS	
528 ANDERSON AVE	RESIDENTIAL	11.28 S OF NL	
530 ANDERSON AVE	RESIDENTIAL	18.28 S MH @ ANDREWS	
532 ANDERSON AVE	RESIDENTIAL	3.20 E OF W.	
534 ANDERSON AVE	RESIDENTIAL	10.52 W MH @ ANDREWS	
423/425 ANDERSON ST	RESIDENTIAL	16.43 W OF EL.	
427 ANDERSON ST	RESIDENTIAL	25.60 E MH ANDREWS	

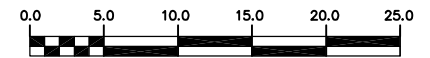
SEWER JUNCTION INFORMATION
MH @ ANDREWS ST. (0+89.55) TO * 1ST MH E. OF ANDREWS ST. (1+91.56)
DISTANCE FROM MH @ ANDREWS ST. (0+89.55)

Distance (E)	Depth	Direction
27.30	150#	SOUTH
43.50	150#	SOUTH
57.60	150#	SOUTH
65.10	150#	SOUTH
72.60	150#	SOUTH
80.10	150#	SOUTH
94.40	150#	SOUTH
99.70	150#	SOUTH
100.60	150#	NORTH

* INFORMATION FROM SEWER VIDEO INSPECTION

METRIC
WHOLE NUMBERS INDICATE MILLIMETRES
DECIMALIZED NUMBERS INDICATE METRES

WARNING
IF POWER EQUIPMENT OR EXPLOSIVES ARE TO BE USED FOR EXCAVATION ON THIS PROJECT THE CONTRACTOR MUST:
1) NOTIFY THE GAS COMPANY OF THE PROPOSED LOCATION OF EXCAVATION.
2) TAKE PRECAUTION TO AVOID DAMAGE TO GAS COMPANY INSTALLATIONS.
SEE PROVINCIAL REGULATION 210/72 FOR DETAILS



200 WM	WATERMAIN	200 WM	SL, HYDRO	150 WM	WATERMAIN	150 WM
⊕	HYDRANT	⊕	MTS	⊕	HYDRANT	⊕
⊕	VALVE	⊕	TRAFFIC SIGNALS	⊕	VALVE	⊕
525 LDS	LAND DRAINAGE SEWER	525 LDS	GAS	50 GAS	300 LDS	LAND DRAINAGE SEWER
375 WWS	WASTEWATER SEWER	375 WWS	SURVEY BAR	250 WWS	WASTEWATER SEWER	250 WWS
○	MANHOLE	●	FENCE	⊕	PROFILE	
□	CATCH BASIN	■	POLE - HYDRO, MTS	⊕	GROUND ABOVE PIPE	
▽	CURB INLET	▽	CURB STOP	⊕	⊕ DITCH (SOUTH & EAST)	
⊕	JUNCTIONS	⊕	GUY ANCHOR	⊕	GUTTER (NORTH & WEST)	
⊕	CULVERT	⊕	LIGHT STANDARD			
⊕	ANODE	⊕	TREE			
EXISTING	LEGEND-PLAN	PROPOSED	EXISTING	LEGEND-PLAN	PROPOSED	EXISTING
				LEGEND-PROFILE	PROPOSED	

LOCATION APPROVED UNDERGROUND STRUCTURES

SUPV. U/G STRUCTURES COMMITTEE DATE

NOTE:
LOCATION OF UNDERGROUND STRUCTURES AS SHOWN ARE BASED ON THE BEST INFORMATION AVAILABLE BUT NO GUARANTEE IS GIVEN THAT ALL EXISTING UTILITIES ARE SHOWN OR THAT THE GIVEN LOCATIONS ARE EXACT. CONFIRMATION OF EXISTENCE AND EXACT LOCATION OF ALL SERVICES MUST BE OBTAINED FROM THE INDIVIDUAL UTILITIES BEFORE PROCEEDING WITH CONSTRUCTION.

NO.	REVISIONS	DATE	BY

CITY OF WINNIPEG WATER AND WASTE ENGINEERING DIVISION

DESIGNED BY: SC
CHECKED BY: TW

DRAWN BY: CJH
APPROVED BY: KZ

HOR. SCALE: 1:250
VERTICAL: 1:50

RELEASED FOR CONSTRUCTION: 2004.08.11

ENGINEER'S SEAL

ORIGINAL SIGNED BY K.R. ZUREK
04/08/11

BID OPPORTUNITY: 405-2004
FILENAME: full_anderson.dwg
PLOT DATE: 2004 08 13

THE CITY OF WINNIPEG WATER AND WASTE DEPARTMENT

2004 COMBINED SEWER RENEWALS AND ASSOCIATED WORKS
ANDERSON AVENUE
MH AT ANDREWS STREET TO 1ST MH E OF ANDREWS STREET

SHEET 1 OF 9
CITY DRAWING NUMBER 05512