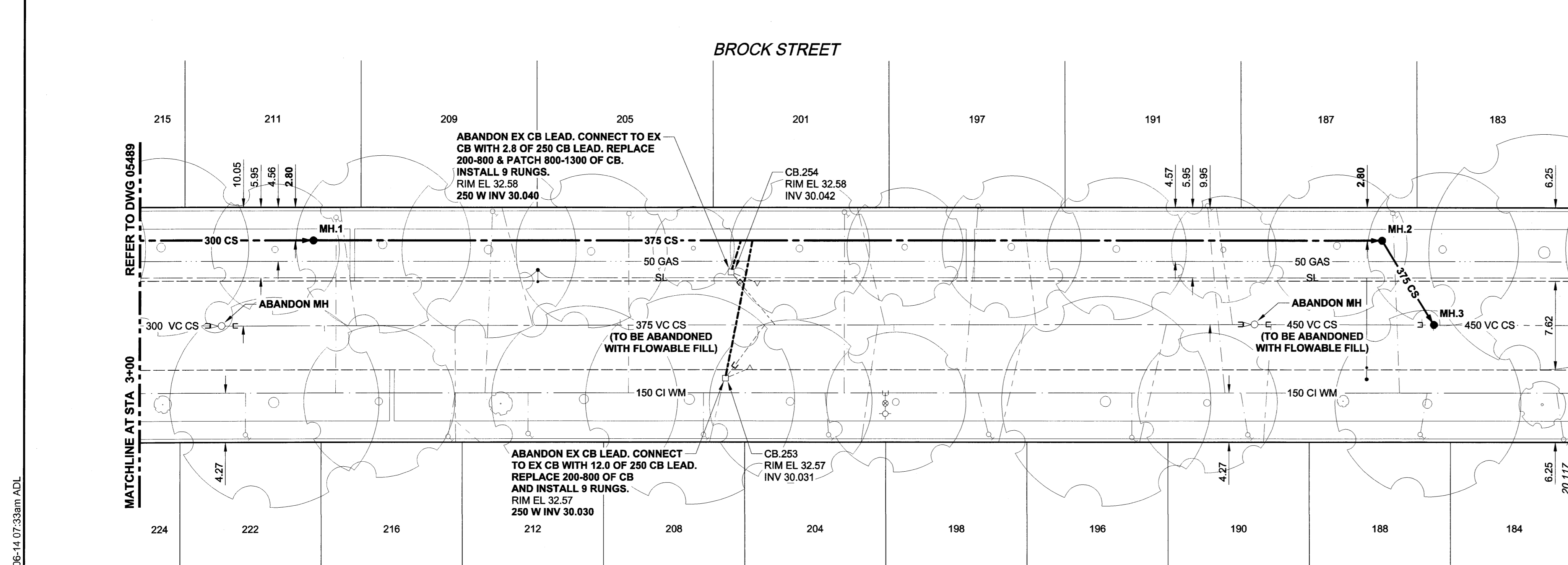
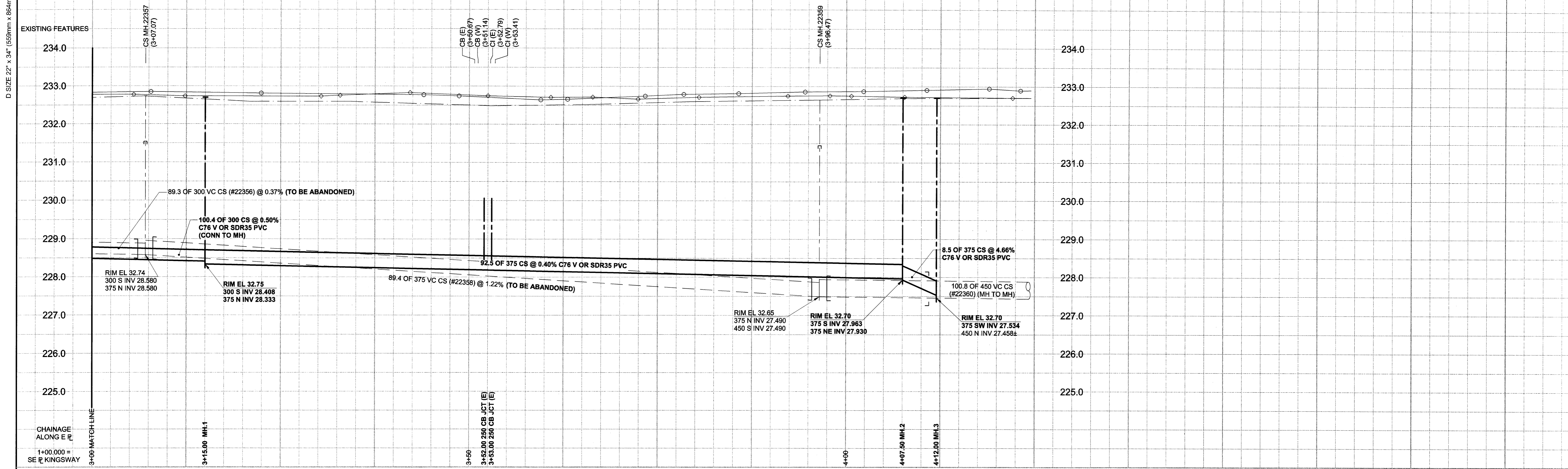


D SIZE 22' x 34' (569mm x 864mm)



**SEWER SERVICE INFORMATION**

| ADDRESS   | SIZE  | PL TIE (SHORT/LONG) | JUNCTION TIE                   | REMARKS       |
|-----------|-------|---------------------|--------------------------------|---------------|
| 183 BROCK |       |                     |                                | NO INFO       |
| 184 BROCK |       |                     |                                | NO INFO       |
| 187 BROCK |       |                     |                                | NO INFO       |
| 188 BROCK |       |                     |                                | NO INFO       |
| 190 BROCK | 3.96  | SNL LOT             | 99.36 S OF MH AT ACADEMY       |               |
| 191 BROCK | 2.13  | SNL LOT             | 1.90 S OF MH AT ACADEMY        |               |
| 196 BROCK | 9.75  | NSL LOT             | 7.62 S OF 1ST MH S OF ACADEMY  |               |
| 197 BROCK | 3.86  | SNL LOT             | 18.90 S OF 1ST MH S OF ACADEMY |               |
| 198 BROCK | 2.44  | SNL LOT             | 19.81 S OF 1ST MH S OF ACADEMY |               |
| 201 BROCK | 2.74  | SNL LOT             | 32.00 S OF 1ST MH S OF ACADEMY |               |
| 204 BROCK | 2.13  | SNL LOT             | 32.61 S OF 1ST MH S OF ACADEMY |               |
| 205 BROCK |       |                     |                                | NO INFO       |
| 208 BROCK | 3.05  | SNL LOT             | 44.81 S OF 1ST MH S OF ACADEMY |               |
| 209 BROCK | 3.05  | SNL LOT             | 62.48 S OF 1ST MH S OF ACADEMY |               |
| 211 BROCK | 1.83  | SNL LOT             | 77.72 S OF 1ST MH S OF ACADEMY |               |
| 212 BROCK | 10.67 | SNL LOT             | 69.19 S OF 1ST MH S OF ACADEMY | DBLE WITH 216 |
| 216 BROCK | 1.94  | SNL LOT             | 69.19 S OF 1ST MH S OF ACADEMY | DBLE WITH 212 |
| 222 BROCK |       |                     |                                | NO INFO       |

**WATER SERVICE INFORMATION**

| ADDRESS                 | DISTANCE | SIZE (mm) | SHORT & LONG MEASUREMENT             | CORPORATION LOCATION |
|-------------------------|----------|-----------|--------------------------------------|----------------------|
| 183 BROCK (RESIDENTIAL) | 0.58     | 13        | 1.54 SNL LOT LEAD 62.47 SSL ACADEMY  | 0.30 S OF SC         |
| 184 BROCK (RESIDENTIAL) | 0.26     | 15        | 2.41 SNL LOT LEAD 63.49 SSL ACADEMY  | 0.61 S OF SC         |
| 187 BROCK (RESIDENTIAL) | 0.46     | 13        | 2.10 SNL LOT LEAD 78.27 SSL ACADEMY  | 0.61 N OF SC         |
| 188 BROCK (RESIDENTIAL) | 0.67     | 13        | 2.62 SNL LOT LEAD 75.91 SSL ACADEMY  | 0.61 N OF SC         |
| 190 BROCK (RESIDENTIAL) | 0.64     | 13        | 5.31 SNL LOT LEAD 90.82 SSL ACADEMY  | 0.61 S OF SC         |
| 191 BROCK (RESIDENTIAL) | 0.15     | 19        | 2.90 SNL LOT LEAD 94.30 SSL ACADEMY  | 1.52 N OF SC         |
| 196 BROCK (RESIDENTIAL) | 0.44     | 19        | 3.13 SNL LOT LEAD 100.86 SSL ACADEMY | OFF SC               |
| 197 BROCK (RESIDENTIAL) | 0.11     | 13        | 7.53 SNL LOT LEAD 114.17 SSL ACADEMY | 1.22 S OF SC         |
| 198 BROCK (RESIDENTIAL) | 0.67     | 13        | 3.31 SNL LOT LEAD 113.25 SSL ACADEMY | 0.91 S OF SC         |
| 201 BROCK (RESIDENTIAL) | 0.39     | 13        | 3.87 SNL LOT LEAD 125.74 SSL ACADEMY | OFF SC               |
| 204 BROCK (RESIDENTIAL) | 0.64     | 13        | 4.95 SNL LOT LEAD 127.10 SSL ACADEMY | 0.30 S OF SC         |
| 211 BROCK (RESIDENTIAL) | 0.50     | 15        | 7.29 SNL LOT LEAD 144.39 SSL ACADEMY | OFF SC               |
| 212 BROCK (RESIDENTIAL) | 0.65     | 15        | 3.56 SNL LOT LEAD 137.93 SSL ACADEMY | OFF SC               |
| 209 BROCK (RESIDENTIAL) | 0.33     | 13        | 3.86 SNL LOT LEAD 156.19 SSL ACADEMY | 0.61 S OF SC         |
| 211 BROCK (RESIDENTIAL) | 0.86     | 13        | 2.16 SNL LOT LEAD 169.73 SSL ACADEMY | OFF SC               |
| 212 BROCK (RESIDENTIAL) | 0.74     | 19        | 5.69 NSL LOT LEAD 153.11 SSL ACADEMY | OFF SC               |
| 216 BROCK (RESIDENTIAL) | 0.50     | 15        | 1.23 SNL LOT LEAD 160.03 SSL ACADEMY | 0.61 N OF SC         |
| 222 BROCK (RESIDENTIAL) | 0.66     | 13        | 5.67 NSL LOT LEAD 177.57 SSL ACADEMY | OFF SC               |

**CONSTRUCTION NOTES:**

- INSTALL NEW SEWER BY TRENCHLESS METHODS.
- RENEW BUILDING CONNECTIONS TO PROPERTY LINE.
- ALL SEWER AND WATER SERVICES TO BE LOCATED IN THE FIELD BY THE CONTRACTOR.
- SEWERS AND CB LEADS TO BE ABANDONED SHALL BE FILLED WITH CEMENT-STABILIZED FLOWABLE FILL.

**WARNING**

IF POWER EQUIPMENT OR EXPLOSIVES ARE TO BE USED FOR EXCAVATION ON THIS PROJECT, THE CONTRACTOR MUST:

- NOTIFY THE GAS COMPANY OF THE PROPOSED LOCATION OF EXCAVATION.
- TAKE PRECAUTION TO AVOID DAMAGE TO GAS COMPANY INSTALLATIONS. SEE PROVINCIAL REGULATION 140/92 FOR DETAILS

| 150 mm WM | WATERMAIN           | 150 mm WM | CURB STOP     | 150 mm WM | WATERMAIN           | 150 mm WM |
|-----------|---------------------|-----------|---------------|-----------|---------------------|-----------|
| ○         | HYDRANT             | ●         | REDUCER       | ○         | LAND DRAINAGE SEWER | ○         |
| ○         | VALVE               | ●         | COUPLING      | ○         | WASTE WATER SEWER   | ○         |
| ○         | LAND DRAINAGE SEWER | ○         | HYDRO         | ○         | PAVEMENT CROWN      | ○         |
| ○         | WASTE WATER SEWER   | ○         | MTS           | ○         | NORTH/WEST P        | ○         |
| ○         | MANHOLE             | ○         | GAS           | ○         | SOUTH/EAST P        | ○         |
| ○         | CATCH BASIN         | ○         | ASPHALT       | ○         | PAVEMENT CROWN      | ○         |
| ○         | CURB INLET          | ○         | CONCRETE      | ○         |                     | ○         |
| ○         | CULVERT             | ○         | CONCRETE      | ○         |                     | ○         |
| ○         | PIPE ABANDONMENTS   | ○         | LAMP STANDARD | ○         |                     | ○         |
| ○         | SURVEY BAR          | ○         | TREE          | ○         |                     | ○         |
| ○         | EXISTING            | ○         | LEGEND - PLAN | ○         | LEGEND - PROFILE    | ○         |
| ○         | NEW                 | ○         | NEW           | ○         | NEW                 | ○         |

**LOCATION APPROVED UNDERGROUND STRUCTURES**

SUPR. U/G STRUCTURES DATE COMMITTEE

**NOTE:** LOCATION OF UNDERGROUND STRUCTURES AS SHOWN ARE BASED ON THE BEST INFORMATION AVAILABLE. BUT NO GUARANTEE IS GIVEN THAT ALL EXISTING UTILITIES ARE SHOWN OR THAT THE GIVEN LOCATIONS ARE EXACT. CONFIRMATION OF EXISTENCE AND EXACT LOCATION OF ALL SERVICES MUST BE OBTAINED FROM THE INDIVIDUAL UTILITIES BEFORE PROCEEDING WITH CONSTRUCTION.

|                            |  |
|----------------------------|--|
| BM 51-037<br>ELEV 232.446m | N.W. Cor. Kingsway & Queenston St., Brass Plug in 12.8m Conc. pile, 2.5m S. of N.L. Kingsway & 2.5m E. of W.L. Queenston St. |
| 0                          | ISSUED FOR CONSTRUCTION  |
| 04/08/14                   | ADL  |
| YYMMDD                     | BY   |
| NO.                        | REVISIONS  |

**METRIC**  
WHOLE NUMBERS INDICATE MILLIMETRES  
DECIMALIZED NUMBERS INDICATE METRES

**UMA**  
www.umagroup.com

2004 UMA ENGINEERING LTD. ALL RIGHTS RESERVED.

|             |       |                           |           |
|-------------|-------|---------------------------|-----------|
| DESIGNED BY | FMI   | CHECKED BY                | ADL       |
| DRAWN BY    | ADL   | APPROVED BY               | CCM       |
| HOR. SCALE  | 1:250 | RELEASED FOR CONSTRUCTION |           |
| VERT. SCALE | 1:50  | DATE                      | Jan 14/14 |

**APEGN**  
Certificate of Authorization  
UMA Engineering Ltd.  
No. 256 Expiry: April 30, 2005

PROFESSIONAL'S SEAL  
14 June 2014  
C. C. MACEY  
REGISTERED ENGINEER

CONSULTANT DRAWING NO. 19  
D265-107-02

**THE CITY OF WINNIPEG**  
WATER AND WASTE DEPARTMENT

**2004 COMBINED SEWER RENEWALS CONTRACT 13**  
SEWER REPAIRS AND REPLACEMENTS

**BROCK STREET**  
180m N OF KINGSWAY  
TO 62m S OF ACADEMY ROAD

SHEET 19 OF 19  
CITY DRAWING NUMBER  
**05490**

BID OPPORTUNITY NO. 271-2004

UMA FILE NAME: D265-107-02\_13-C-1019\_RXD.DWG 2004-06-14 07:33am ADL