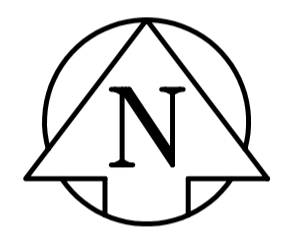


TYPICAL CROSS SECTION

DESCRIPTION	RIM	INVERT			
		NORTH	SOUTH	EAST	WEST
CB 5	31.630			30.030	
CB 6	31.875				31.275
CB 7	31.740		30.140		
CB 8	31.740	30.140			



- REFERENCE NOTES**
- BASILINE IS CENTRE OF RIGHT-OF-WAY.
 - LEGAL PLAN - L.B.I.S.
 - ADD 200.000 TO OBTAIN GEODETIC DATUM (PLAN ONLY).
 - PAVEMENT DIMENSIONS ARE TO BACK OF CURB.
 - EARTH TECH FIELD BOOK NOS. 4111, 4281.

- CONSTRUCTION NOTES**
- REMOVE EXISTING PAVEMENT AND CONSTRUCT NEW 230mm PLAIN DOWELLED CONCRETE PAVEMENT.
 - CONSTRUCT NEW 200mm PLAIN DOWELLED CONCRETE PAVEMENT.
 - CONSTRUCT NEW 200mm REINFORCED CONCRETE PAVEMENT.
 - CONSTRUCT NEW 50mm ASPHALTIC CONCRETE OVERLAY.
 - INSTALL NEW CURB & GUTTER INLET c/w CATCHBASIN (SD024) AND CONNECT NEW 250 LEAD TO EXISTING 300 MANHOLE.
 - INSTALL NEW CURB & GUTTER INLET c/w CATCHBASIN (SD024) AND CONNECT NEW 250 LEAD TO EXISTING 600 COMBINED SEWER.
 - ABANDON EXISTING DRAINAGE INLET.
 - ABANDON EXISTING CATCHBASIN.
 - ADJUST EXISTING CATCHBASIN/MANHOLE FRAME AND COVER.
 - ADJUST EXISTING WATERMAIN VALVE BOX TO GRADE.
 - INSTALL NEW 50mm CAST IRON RISER RING.
 - INSTALL 150mm SUBDRAIN.
 - ADJUST EXISTING CURB STOP BOX TO GRADE.
 - RELOCATE EXISTING TRAFFIC SIGNALS POLE (BY OTHERS).
 - REMOVE EXISTING MTS POLE (BY OTHERS).
 - RELOCATE EXISTING HYDRO POLE (BY OTHERS).
 - REMOVE AND REINSTALL ALUMINUM BALANCED BARRIER GUARDRAIL.
 - RELOCATE EXISTING CHAIN LINK FENCE.
 - REMOVE EXISTING ADVERTISING SIGN (BY OTHERS).
 - ADJUST EXISTING HYDRO MANHOLE (BY OTHERS).
 - INSTALL NEW CATCHBASIN (SD025) AND CONNECT NEW 250 LEAD TO EXISTING 600 COMBINED SEWER.
 - CONSTRUCT CONCRETE RETAINING CURB IN WINDOW WELL.
 - PROPOSED WATERMAIN (BY OTHERS).

APEGM
 Certificate of Authorization
 Earth Tech Canada Inc.
 No. 730 Expiry: April 30, 2004

METRIC
 WHOLE NUMBERS INDICATE MILLIMETRES
 DECIMALIZED NUMBERS INDICATE METRES

EXISTING	LEGEND - PLAN	PROPOSED	EXISTING	LEGEND - PLAN	PROPOSED	EXISTING	LEGEND - PROFILE	PROPOSED
150 mm W.M.	WATERMAIN	150 mm W.M.	---	HYDRO	---	---	⊙ PROFILE	---
300 mm W.M.	HYDRANT	300 mm W.M.	---	M.T.S.	---	---	○ NORTH GUTTER	---
300 mm L.D.S.	VALVE	300 mm L.D.S.	---	CONCRETE	---	---	○ SOUTH GUTTER	---
250 mm W.W.S.	LAND DRAINAGE SEWER	250 mm W.W.S.	---	ASPHALT	---	---	◇ NORTH PROPERTY LINE	---
	WASTEWATER SEWER		---	PROPERTY LINE	---	---	○ SOUTH PROPERTY LINE	---
	MANHOLE		---	SURVEY BAR	---	---		---
	CATCH BASIN		---	ELEVATION	---	---		---
	CURB INLET		---	TREE	---	---		---
	JUNCTIONS		---	SIDEWALK RAMP	---	---		---
	CULVERT		---	CONCRETE SIDEWALK	---	---		---
	GAS		---	FENCE	---	---		---

LOCATION APPROVED UNDERGROUND STRUCTURES
 ORIGINAL SIGNED AND DATED 04/29/04
 SUPV. U/G STRUCTURES DATE COMMITTEE

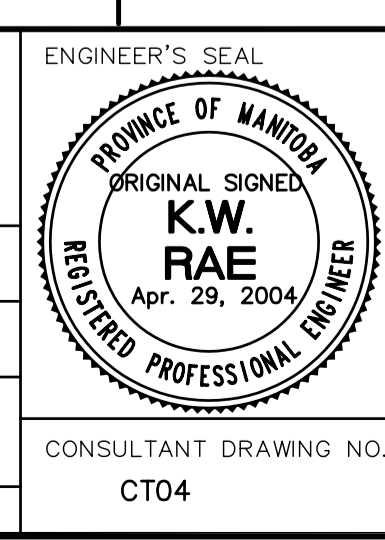
NOTE:
 LOCATION OF UNDERGROUND STRUCTURES AS SHOWN ARE BASED ON THE BEST INFORMATION AVAILABLE, BUT NO GUARANTEE IS GIVEN THAT ALL EXISTING UTILITIES ARE SHOWN OR THAT THE GIVEN LOCATIONS ARE EXACT. CONFIRMATION OF EXISTENCE AND EXACT LOCATION OF ALL SERVICES MUST BE OBTAINED FROM THE INDIVIDUAL UTILITIES BEFORE PROCEEDING WITH CONSTRUCTION.

EARTH TECH
 Earth Tech (Canada) Inc. Winnipeg, Manitoba 204.477.5381

DESIGNED BY BK,BC,KWR
 CHECKED BY KWR,BC
 DRAWN BY BC,BK
 APPROVED BY ORIGINAL SIGNED

HOR. SCALE: 1:250
 VERTICAL: 1:10

RELEASED FOR CONSTRUCTION BY:
 ORIGINAL SIGNED AND DATED 04/29/04



THE CITY OF WINNIPEG
 PUBLIC WORKS DEPARTMENT
 ENGINEERING DIVISION

LOGAN AVENUE TRINITY STREET(RAILWAY) TO REITTA STREET STREET RECONSTRUCTION

PLAN/PROFILE
 STATION 1+60 TO STATION 3+00

CITY DRAWING NUMBER P-3249-04
 SHEET 4 OF 7