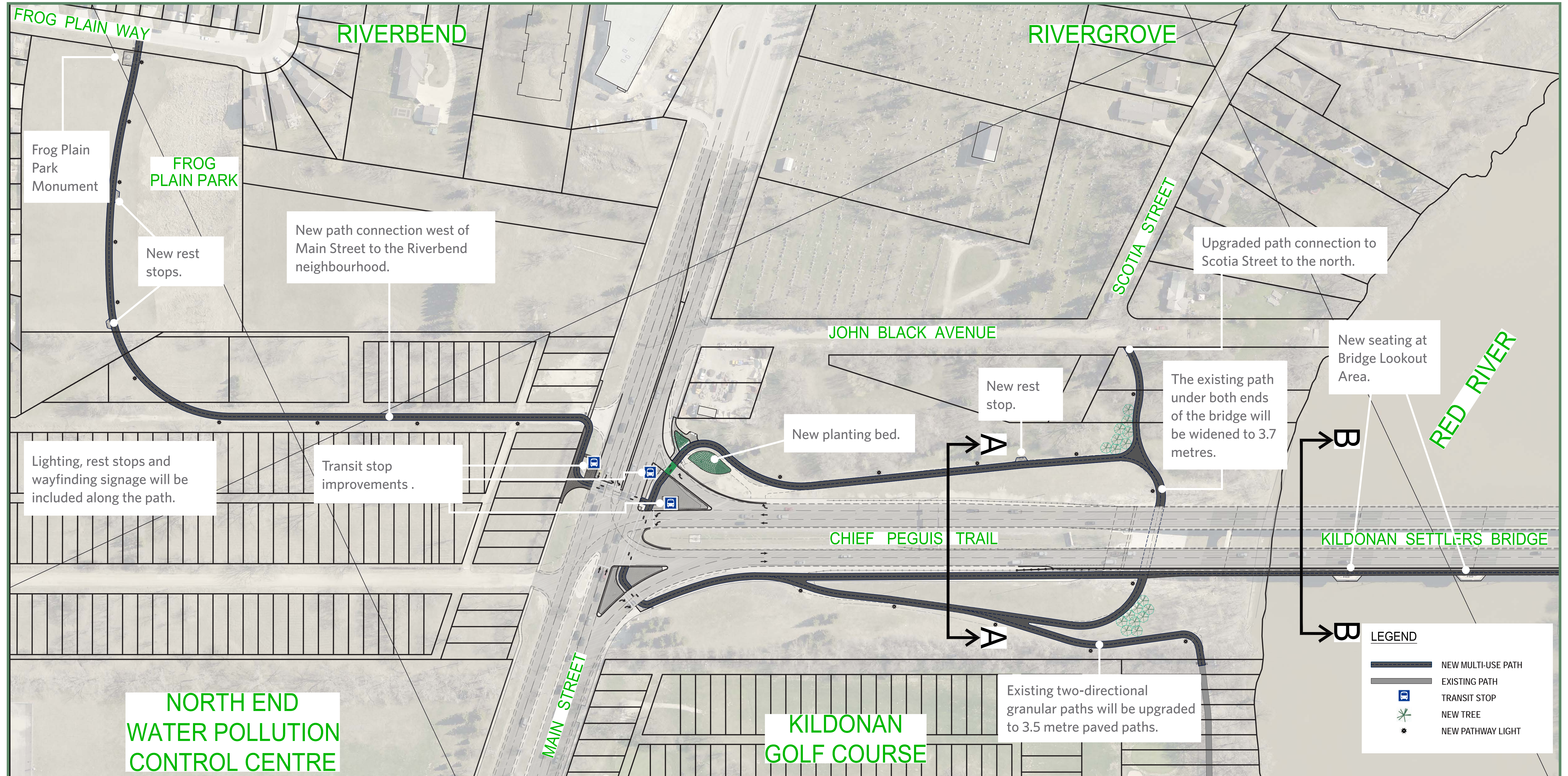


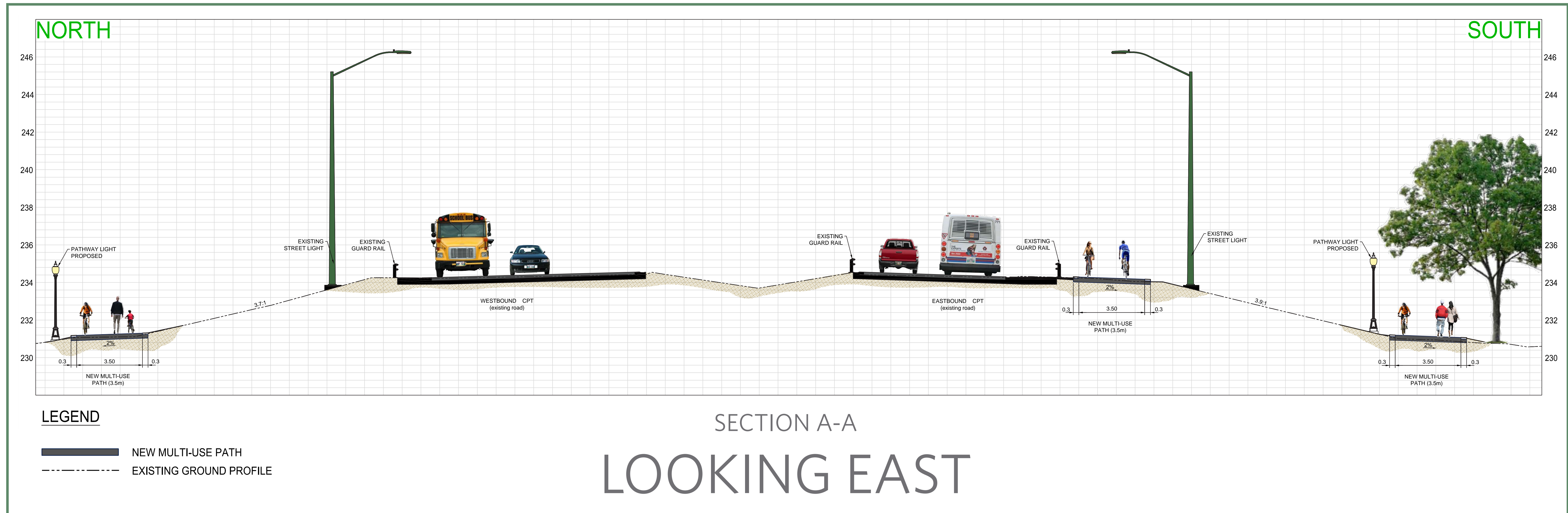
# Design: Main Street to Kildonan Settlers Bridge



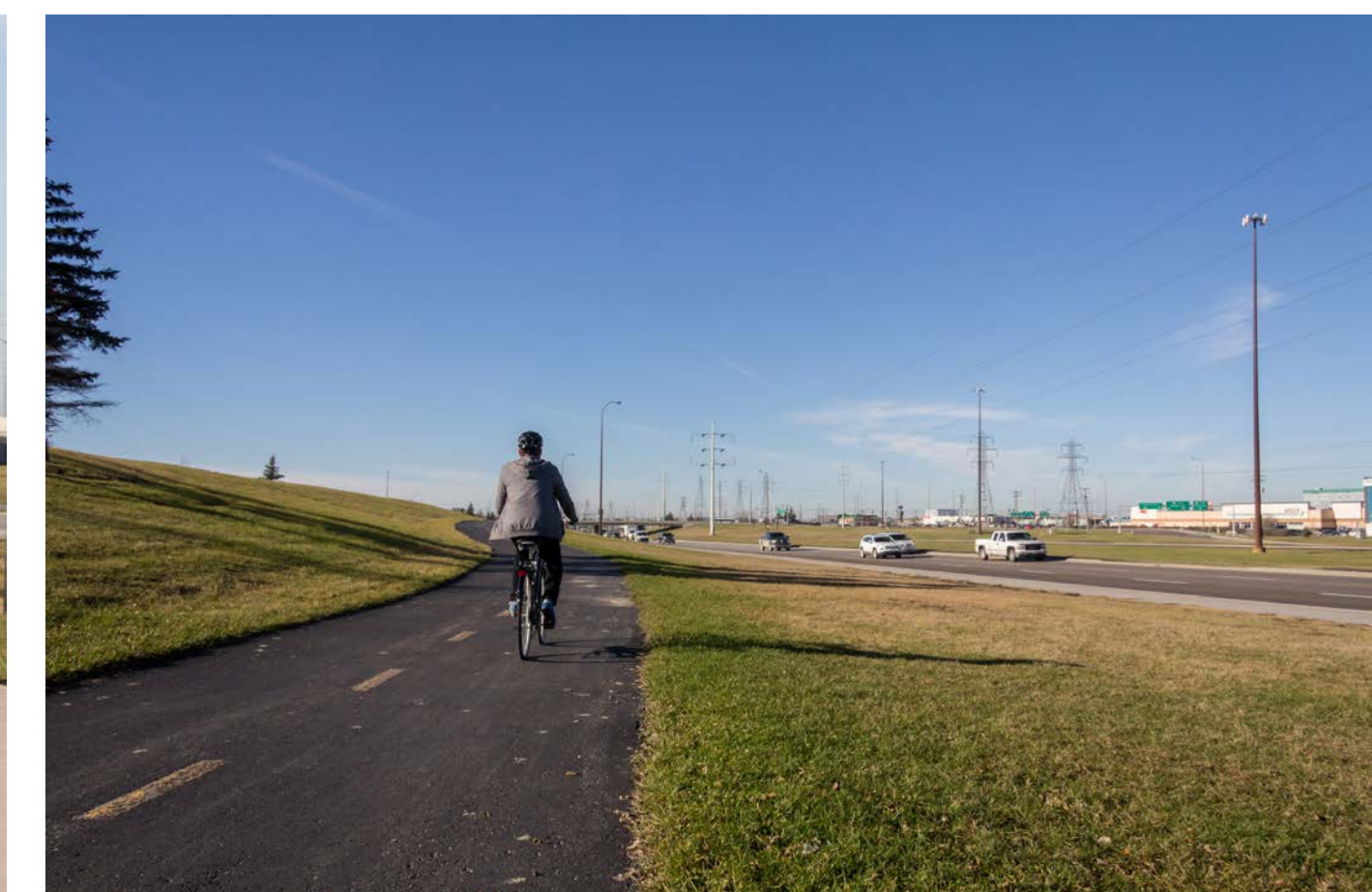
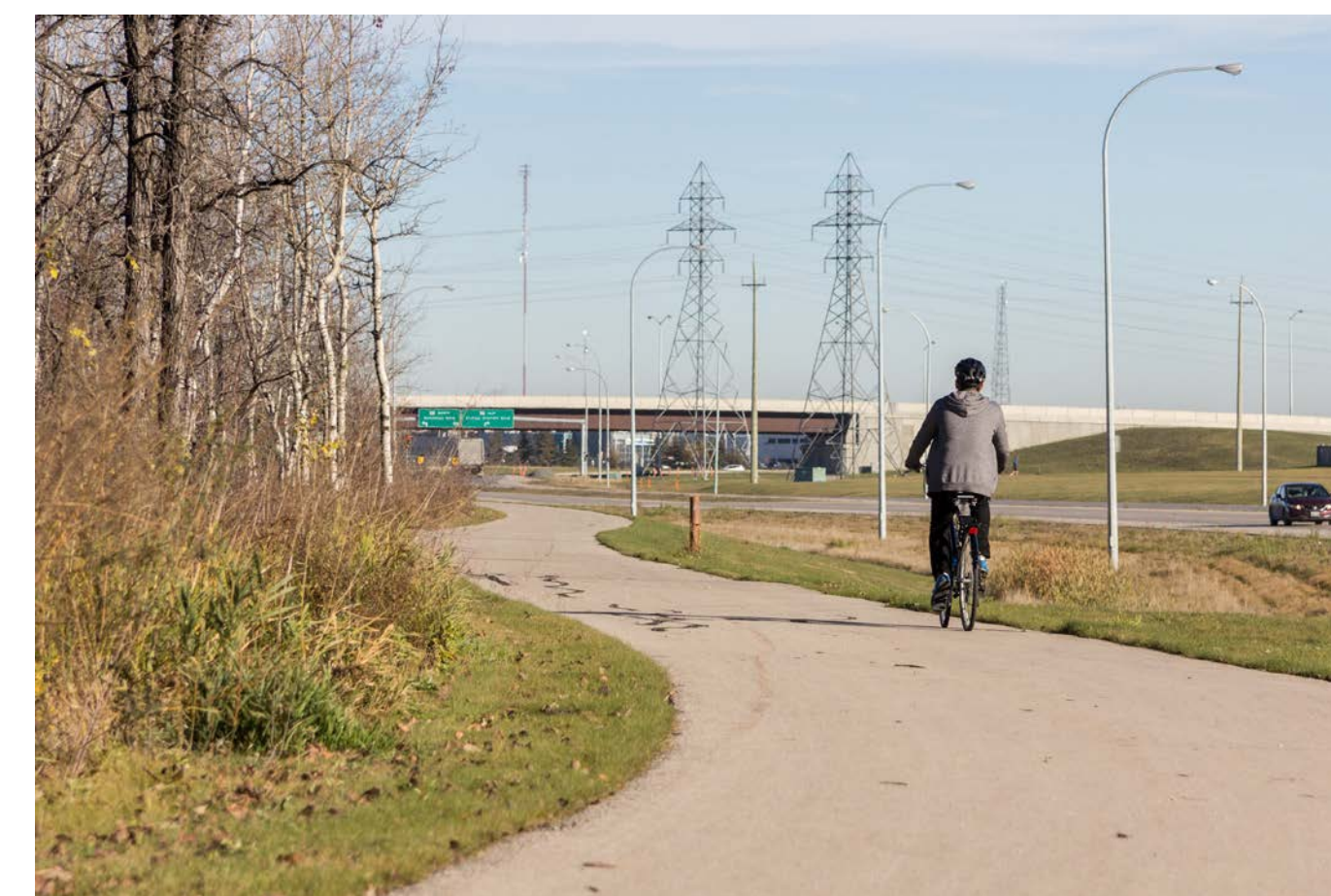
See next two boards for detailed cross sections (A-A and B-B)

# Design: Main Street to Kildonan Settlers Bridge

Cross Section: A-A



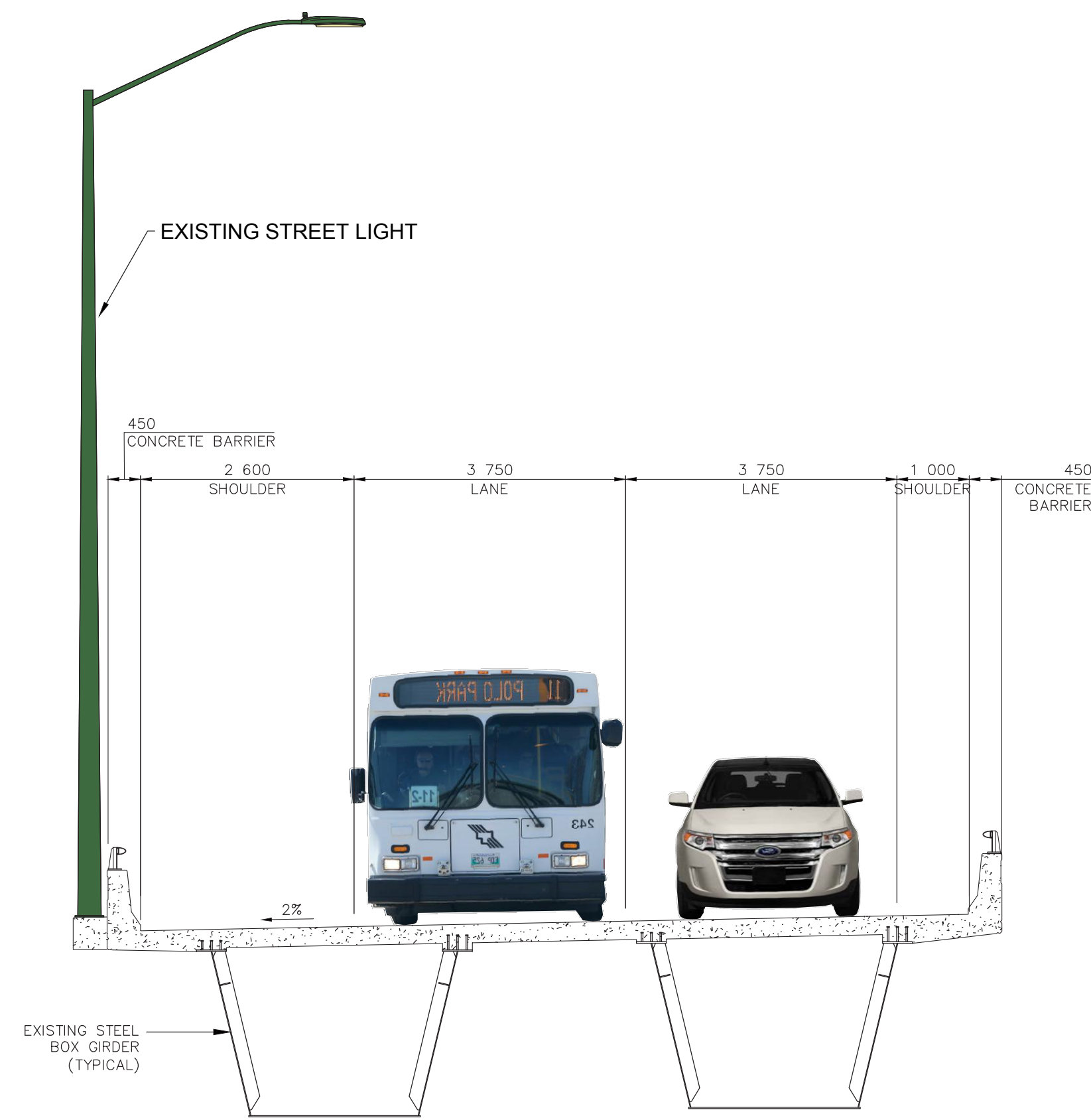
Examples of similar path designs



# Design: Kildonan Settlers Bridge

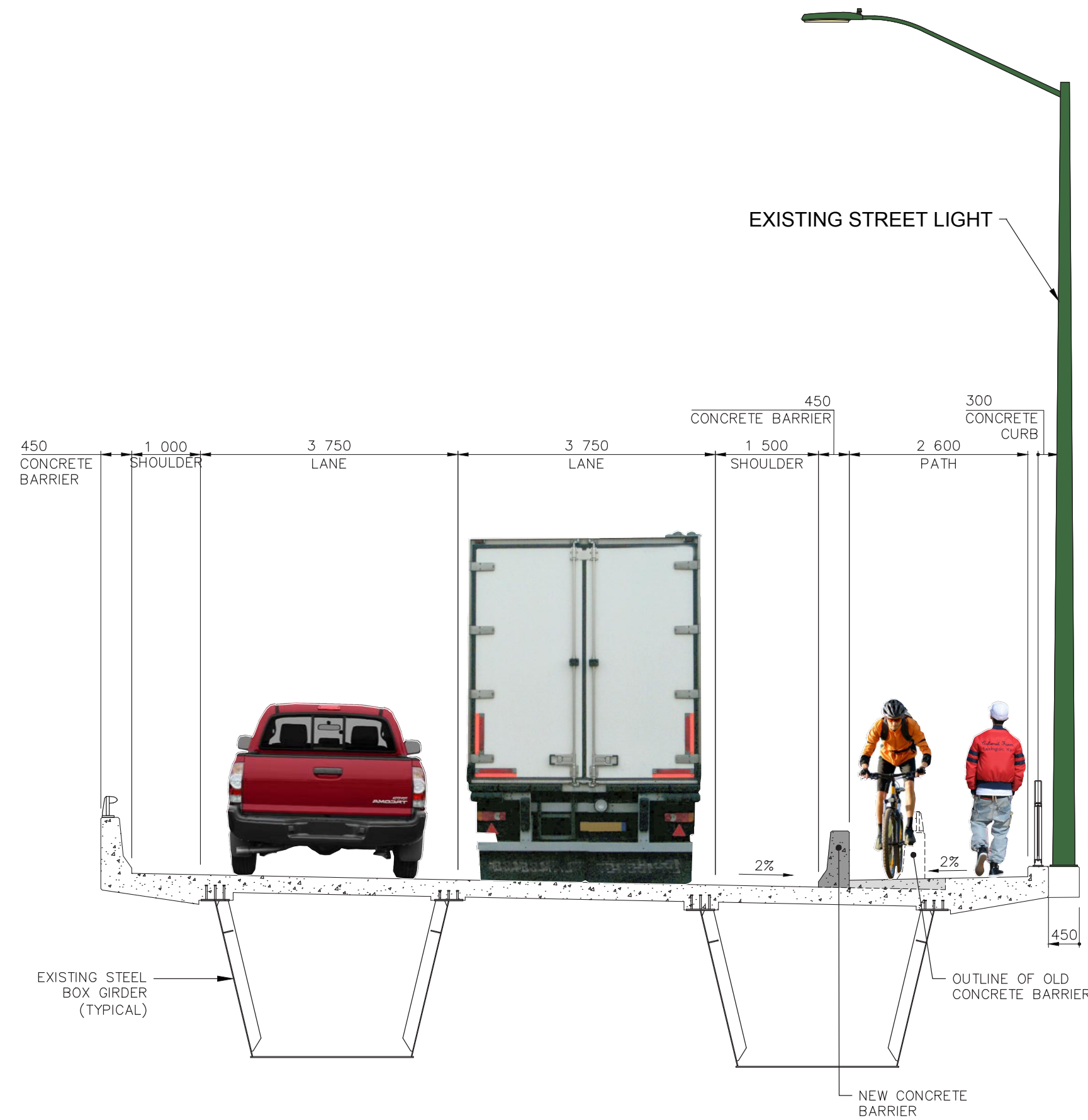
(All units in millimeters)

**NORTH**



KILDONAN SETTLERS BRIDGE WESTBOUND  
LOOKING EAST

**SOUTH**

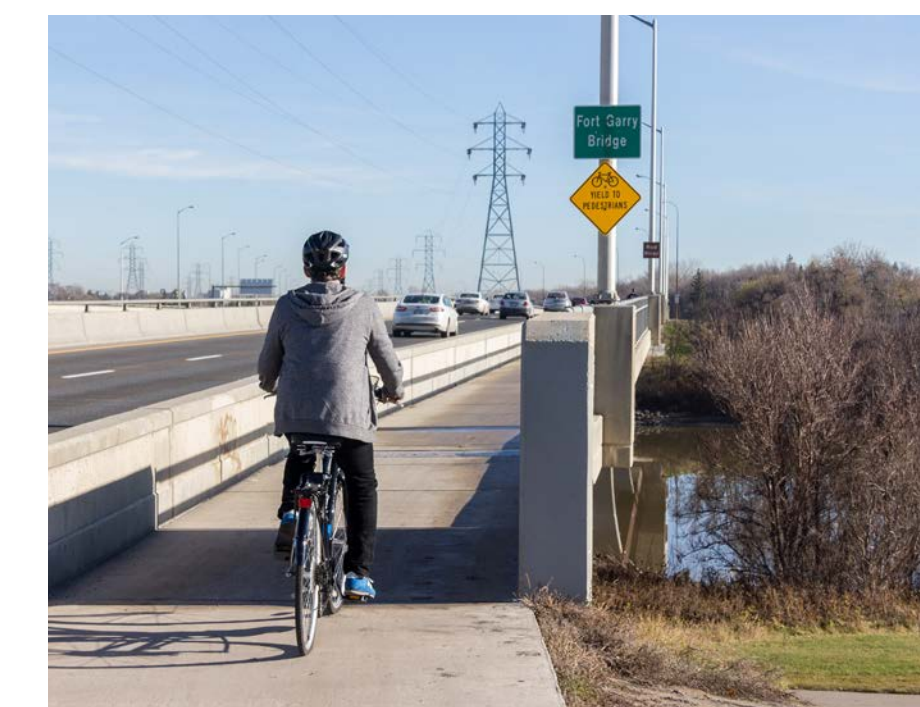


KILDONAN SETTLERS BRIDGE EASTBOUND  
LOOKING EAST

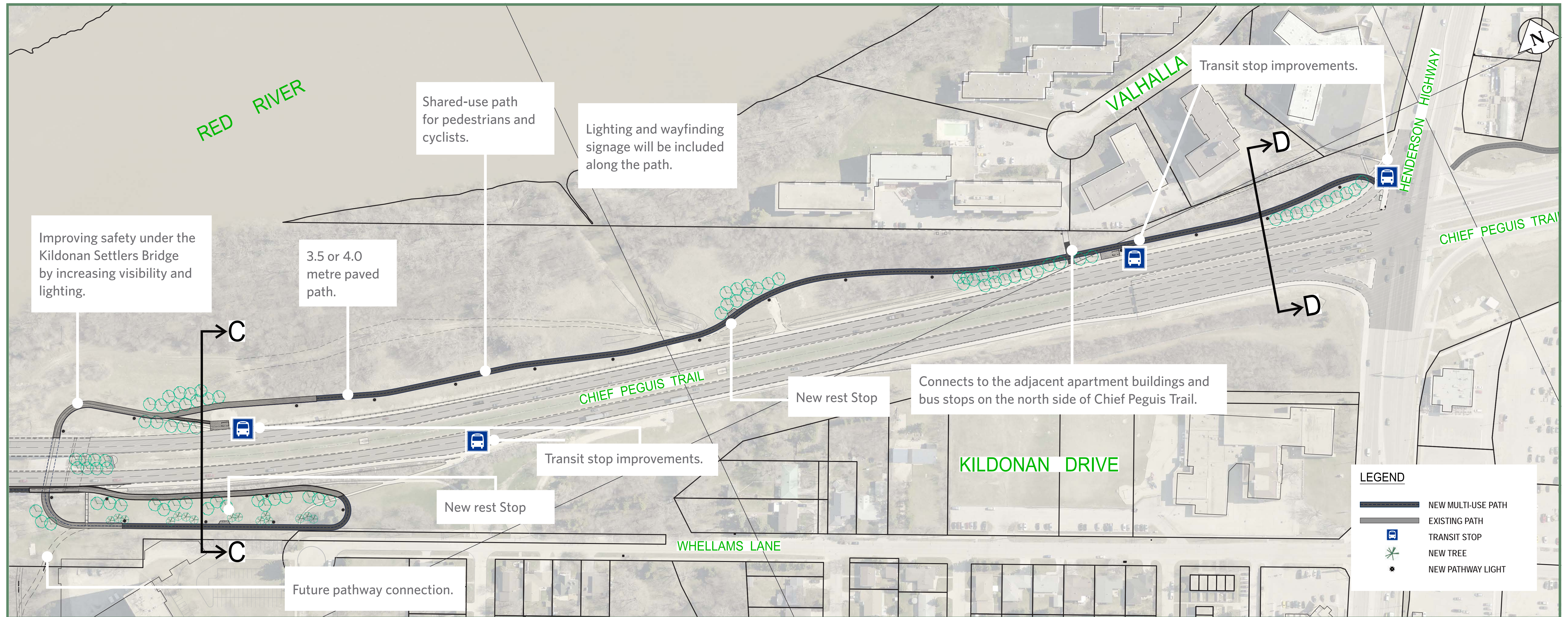
**SECTION B-B**  
NTS

LOOKING EAST

Examples of similar pathway designs



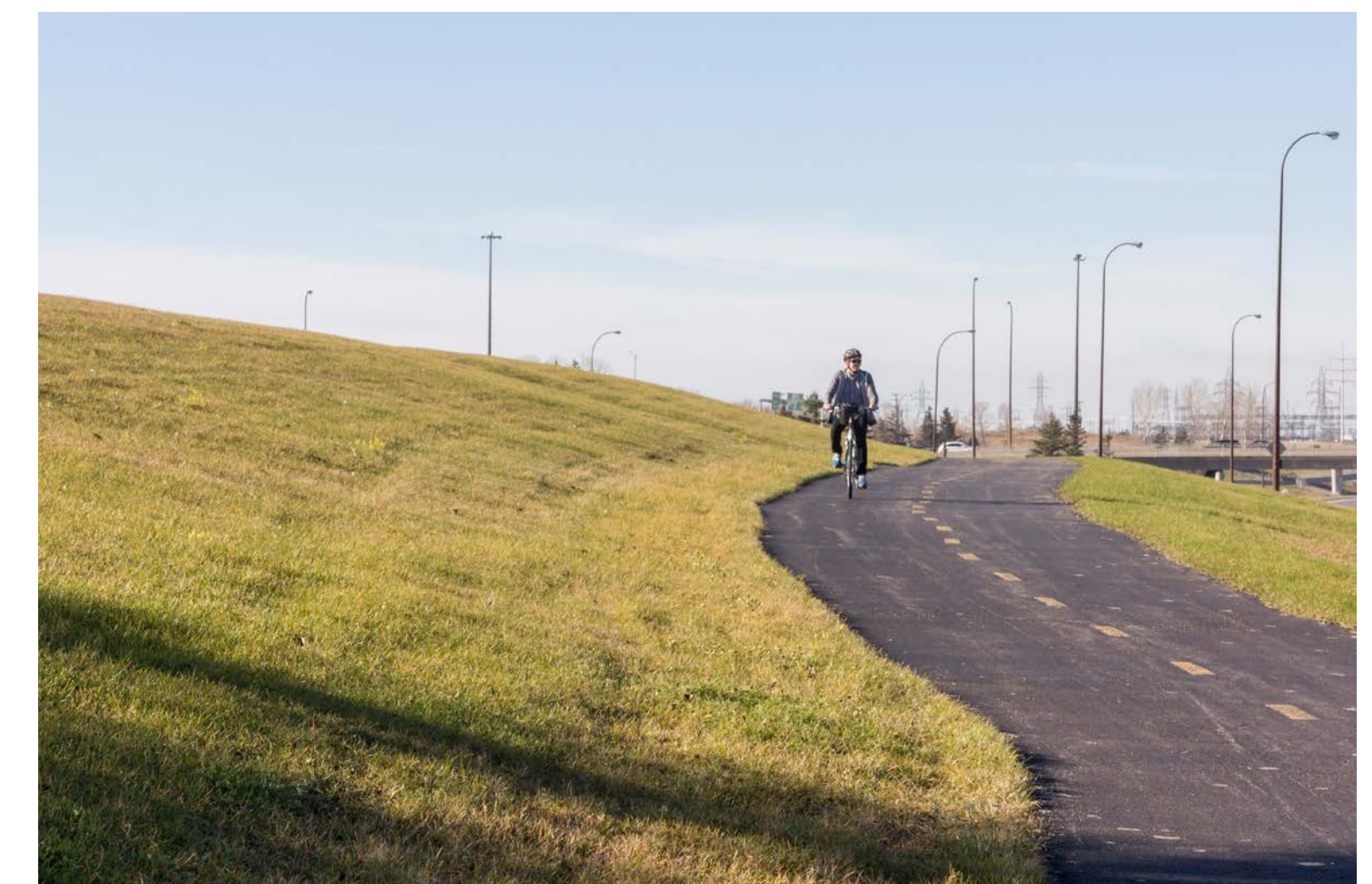
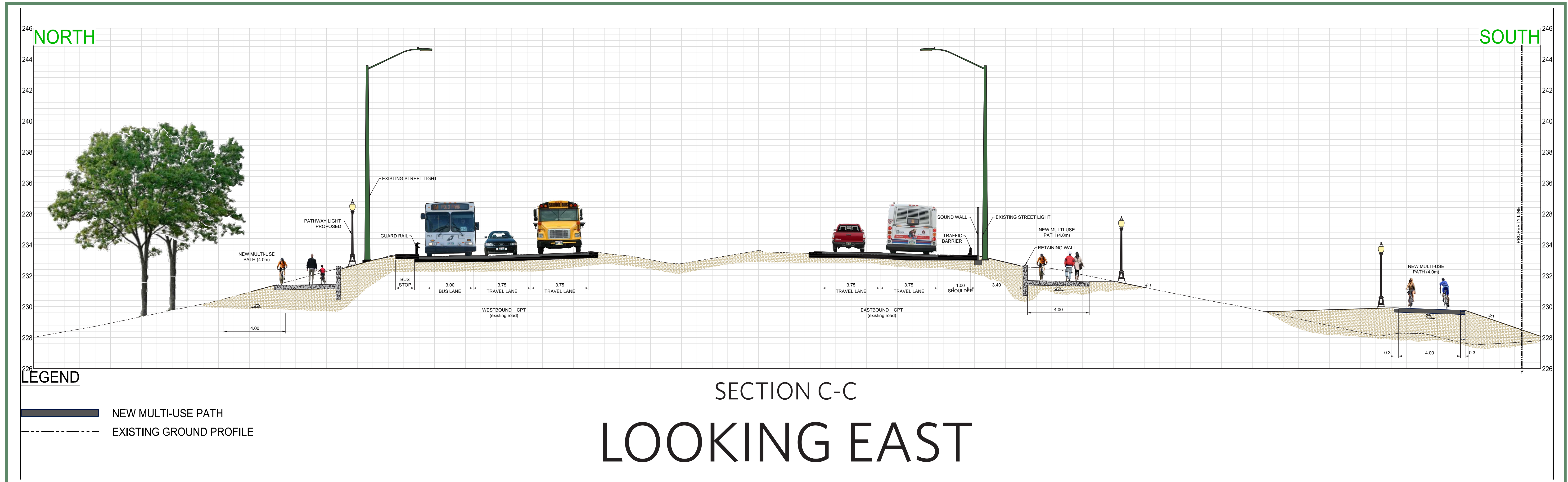
# Design: Kildonan Settlers Bridge to Henderson Hwy.



See next two boards for detailed cross sections (C-C and D-D)

# Design: Kildonan Settlers Bridge to Henderson Hwy.

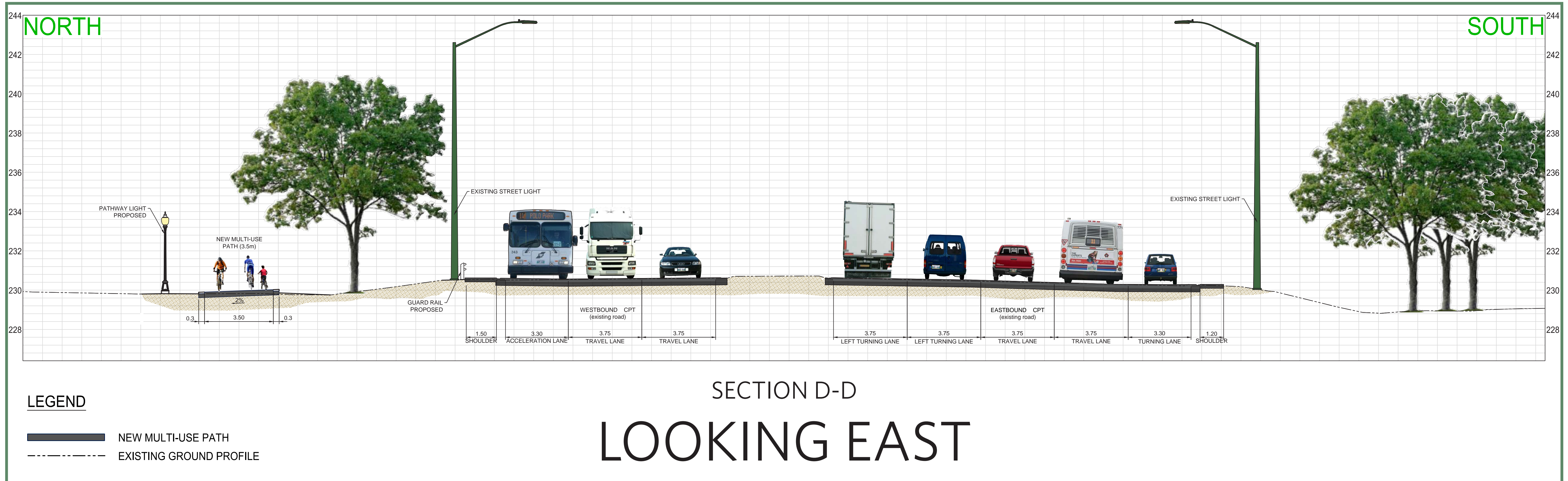
Cross Section: C-C



Examples of similar pathway designs

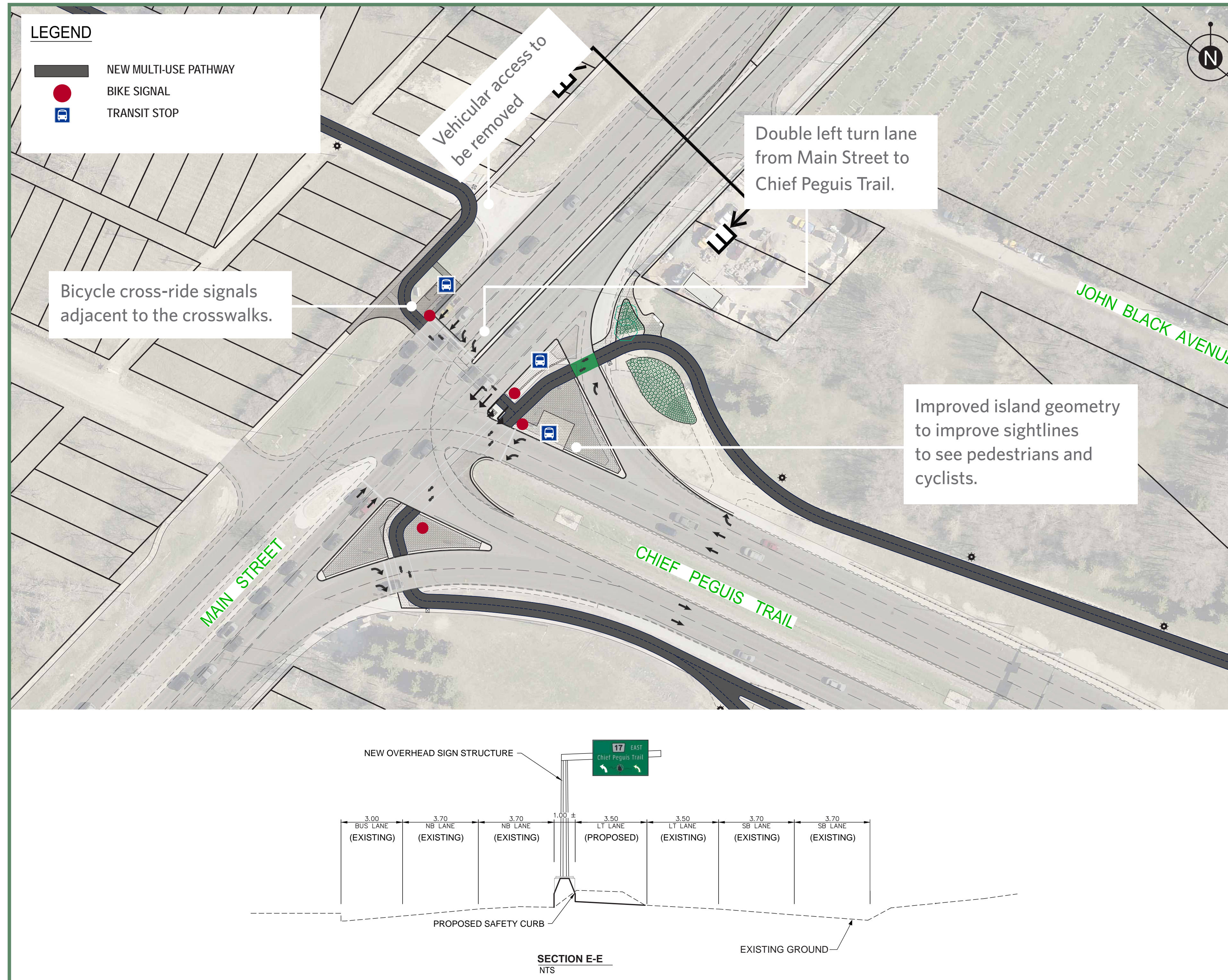
# Design: Kildonan Settlers Bridge to Henderson Hwy.

Cross Section: D-D



Examples of similar pathway designs

# Design: Main Street Intersection

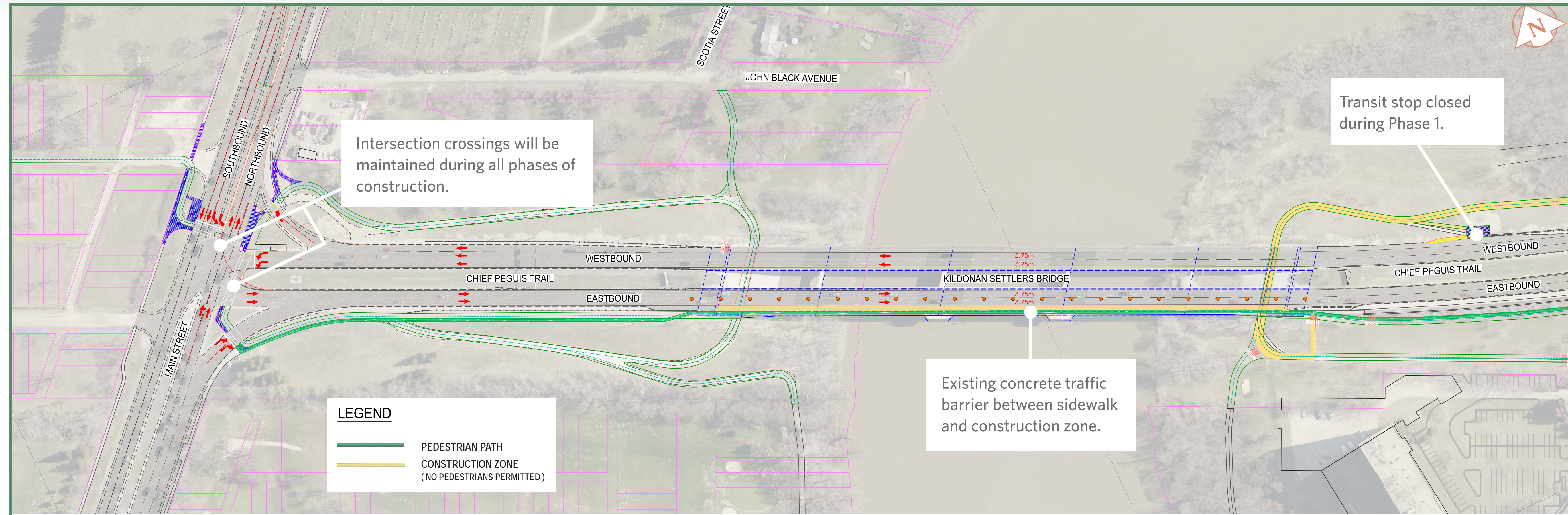


Example of similar bicycle cross-ride signal

# Pedestrian Access During Construction - WEST

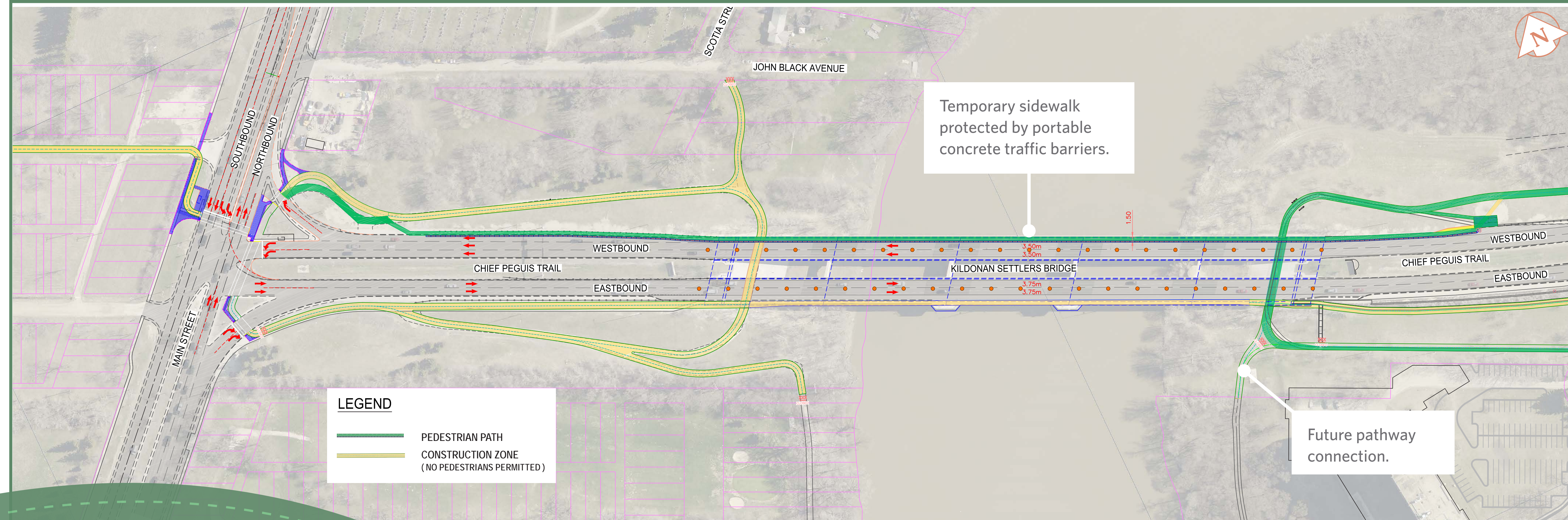
## PHASE 1

April 2018 - June 2018\*



## PHASE 2

June 2018 - November 2018\*



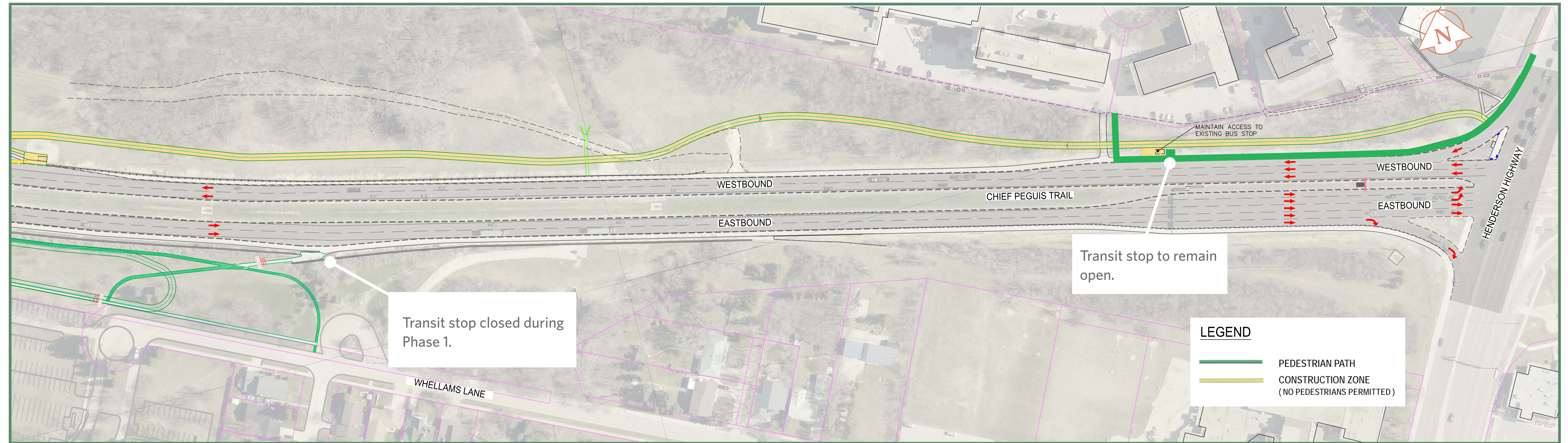
\*Schedule is subject to change during construction.



# Pedestrian Access During Construction - EAST

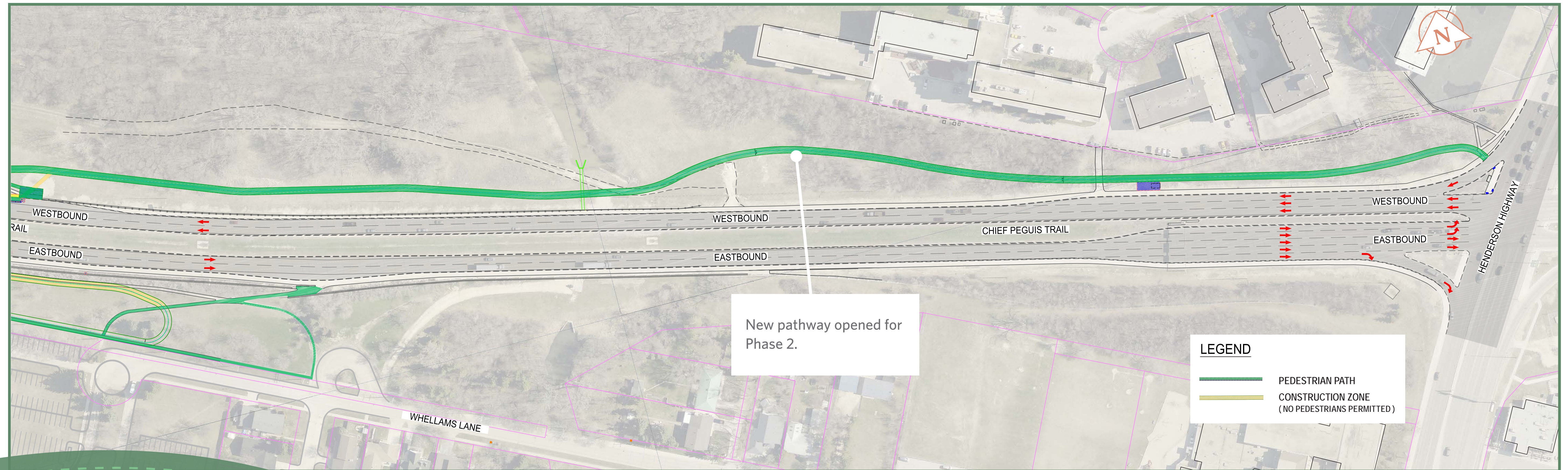
## PHASE 1

April 2018 - June 2018\*



## PHASE 2

June 2018 - November 2018\*



\*Schedule is subject to change during construction.