

Section 1. Trends

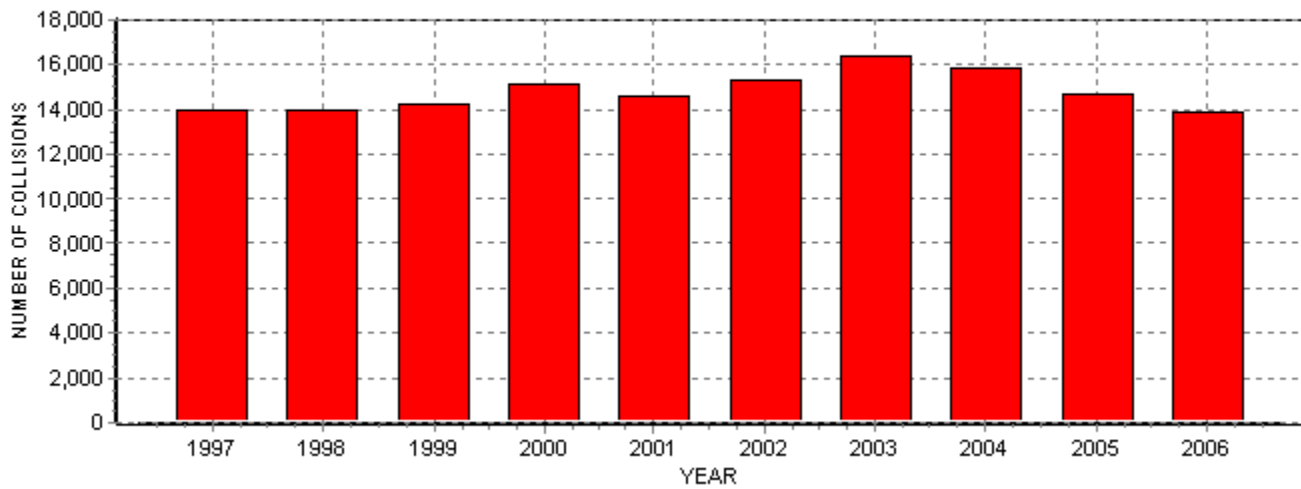
The following statistics and information explore a ten year history of collision statistics within the City of Winnipeg. Also included in this section are statistics relating to population and registered vehicles. The population statistics have been obtained from Manitoba Health. The registered vehicle statistics have been obtained from Manitoba Public Insurance. It is important to note that collisions in this report refer to reported collisions only and exclude parking lots and back lanes.

Figure 1.1 Tabular summary of reported collisions over past 10 years

1997 - 2006

Year	Reported Collisions
1997	14021
1998	13976
1999	14242
2000	15165
2001	14620
2002	15315
2003	16392
2004	15861
2005	14713
2006	13934

Figure 1.2 Total number of reported collisions over past 10 years





Public Works Department Reported Collisions Per 1000 Registered Vehicles - 10 Year Period

Figure 1.3 Tabular summary of reported collisions per 1000 registered vehicles 1997 - 2006

Year	Reported Collisions	Registered Vehicles	Reg. Veh. Collision Ratio
1997	14021	379860	36.91
1998	13976	382810	36.51
1999	14242	389451	36.57
2000	15165	394673	38.42
2001	14620	402613	36.31
2002	15315	428851	35.71
2003	16392	429651	38.15
2004	15861	440728	35.99
2005	14713	447422	32.88
2006	13934	466626	29.86

NOTE: Registered Vehicle Collision Ratio: (Reported Collisions/Registered Vehicles) * 1000

Figure 1.4 Reported collisions per 1000 registered vehicles

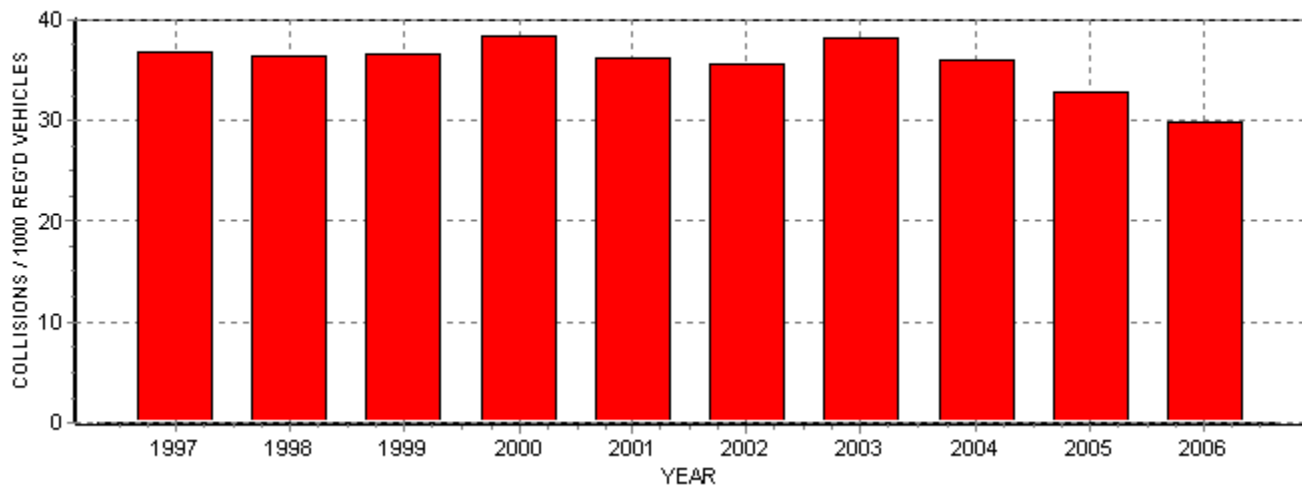




Figure 1.5 Tabular summary of reported collisions per 1000 population

1997 - 2006

Year	Reported Collisions	Population	Population/Collision Ratio
1997	14021	635007	22.08
1998	13976	636393	21.96
1999	14242	646046	22.04
2000	15165	640278	23.69
2001	14620	653728	22.36
2002	15315	650192	23.55
2003	16392	658579	24.89
2004	15861	663443	23.91
2005	14713	665028	22.12
2006	13934	667038	20.89

NOTE: Population Collision Ratio: (Reported Collisions/Population) * 1000

Figure 1.6 Reported collisions per 1000 population

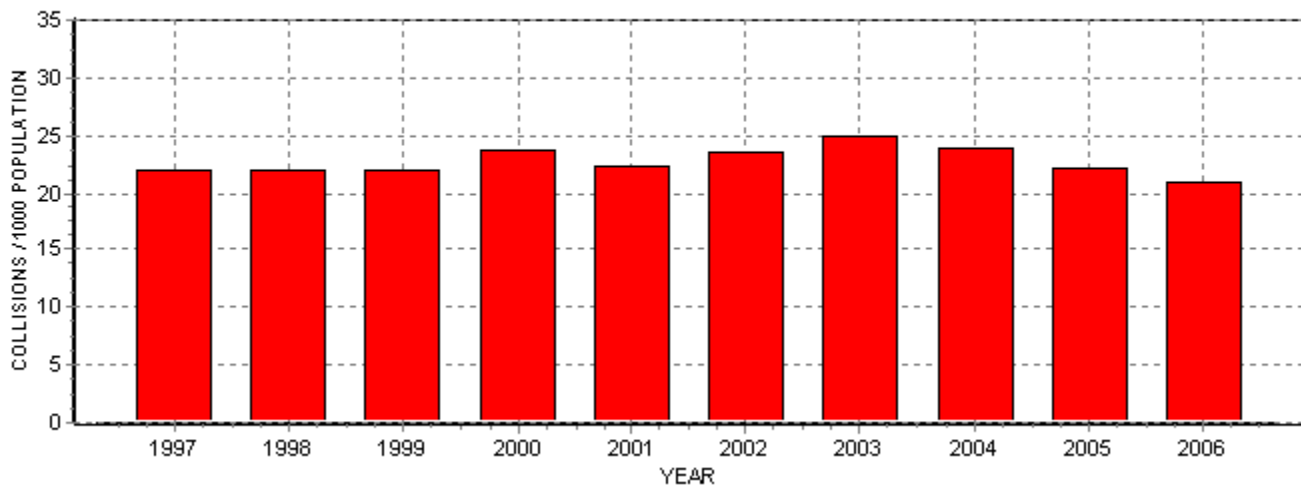


Figure 1.7 Tabular summary of reported collisions by severity **1997 - 2006**

Year	Fatal	Injury	Property Damage	Reported Collisions
1997	21	3571	10429	14021
1998	20	3740	10216	13976
1999	21	3825	10396	14242
2000	17	3693	11455	15165
2001	20	3401	11199	14620
2002	20	3462	11833	15315
2003	21	3761	12610	16392
2004	21	3619	12221	15861
2005	15	3058	11640	14713
2006	19	3077	10838	13934

Figure 1.8 Reported collisions by severity

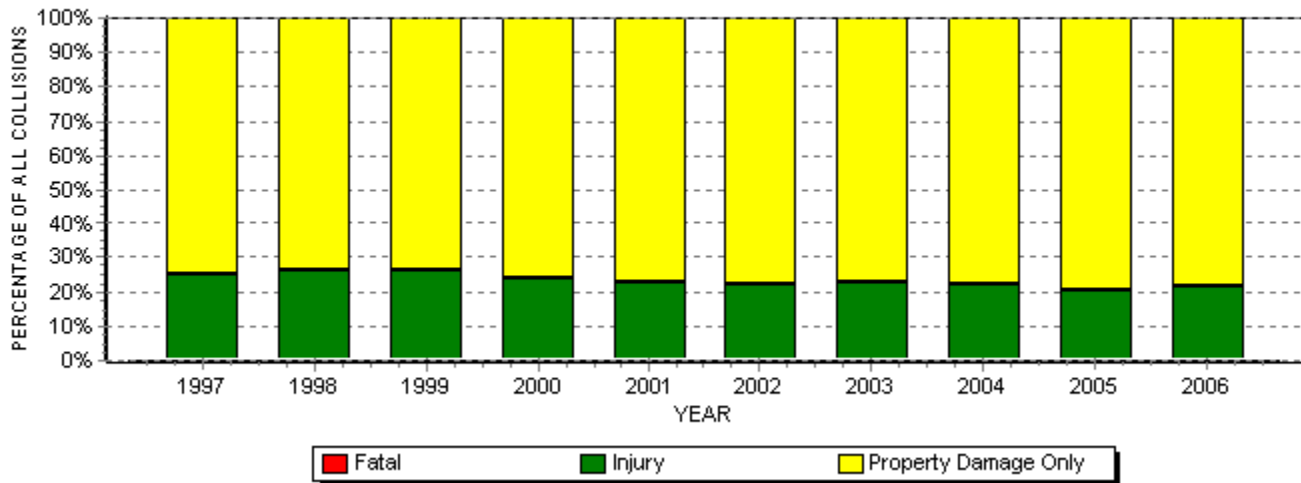


Figure 1.9 Total number of fatal collisions

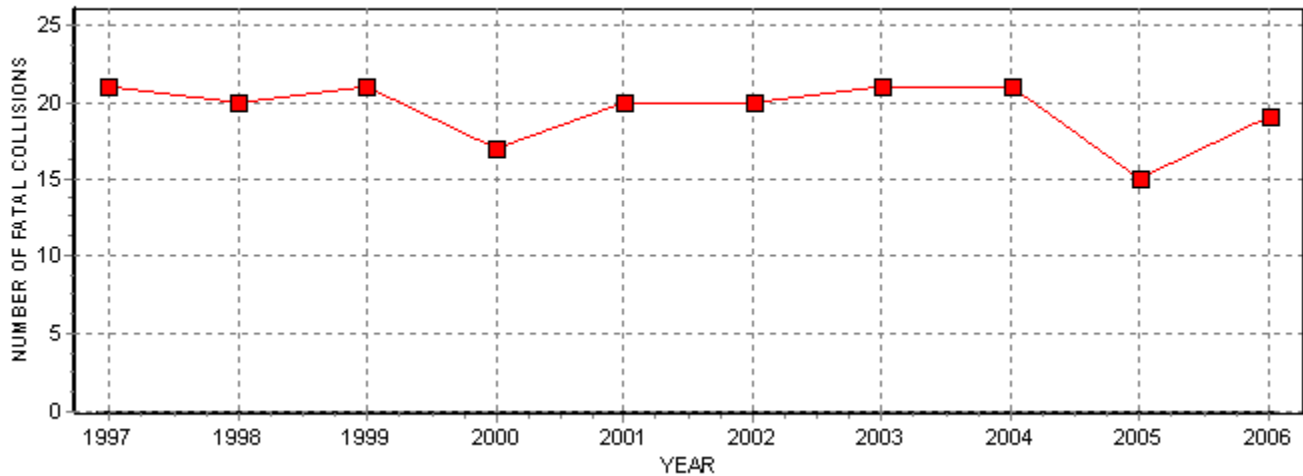


Figure 1.10 Total number of injury and property damage only collisions

