

Section 1. Trends

The following statistics and information explore a ten year history of collision statistics within the City of Winnipeg. Also included in this section are statistics relating to population and registered vehicles. The population statistics have been obtained from Manitoba Health. The registered vehicle statistics have been obtained from Manitoba Transportation and Government Services. It is important to note that collisions in this report refer to reported collisions only and exclude parking lots and back lanes.



Figure 1.1 Tabular summary of reported collisions over past 10 years

1996 - 2005

| Year | Reported Collisions |
|------|---------------------|
| 1996 | 15831 |
| 1997 | 14014 |
| 1998 | 13976 |
| 1999 | 14242 |
| 2000 | 15161 |
| 2001 | 14622 |
| 2002 | 15314 |
| 2003 | 16392 |
| 2004 | 15873 |
| 2005 | 14723 |

Figure 1.2 Total number of reported collisions over past 10 years

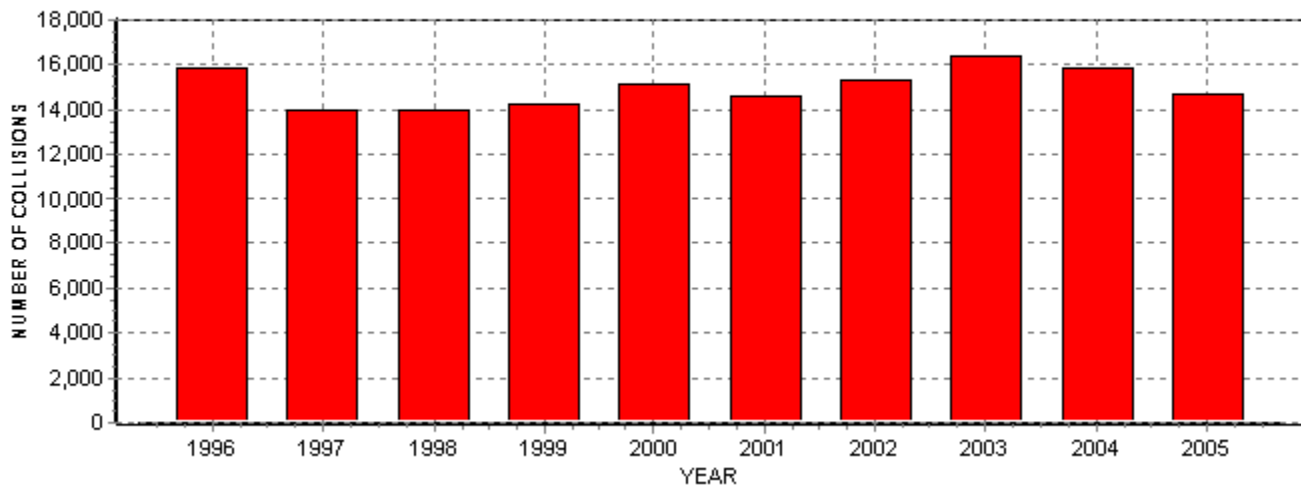




Figure 1.3 Tabular summary of reported collisions per 1000 registered vehicles 1996 - 2005

| Year | Reported Collisions | Registered Vehicles | Reg. Veh. Collision Ratio |
|------|---------------------|---------------------|---------------------------|
| 1996 | 15831 | 342000 | 46.29 |
| 1997 | 14014 | 379860 | 36.89 |
| 1998 | 13976 | 382810 | 36.51 |
| 1999 | 14242 | 389451 | 36.57 |
| 2000 | 15161 | 394673 | 38.41 |
| 2001 | 14622 | 402613 | 36.32 |
| 2002 | 15314 | 428851 | 35.71 |
| 2003 | 16392 | 429651 | 38.15 |
| 2004 | 15873 | 440728 | 36.02 |
| 2005 | 14723 | 447422 | 32.91 |

NOTE: Registered Vehicle Collision Ratio: (Reported Collisions/Registered Vehicles) * 1000

Figure 1.4 Reported collisions per 1000 registered vehicles

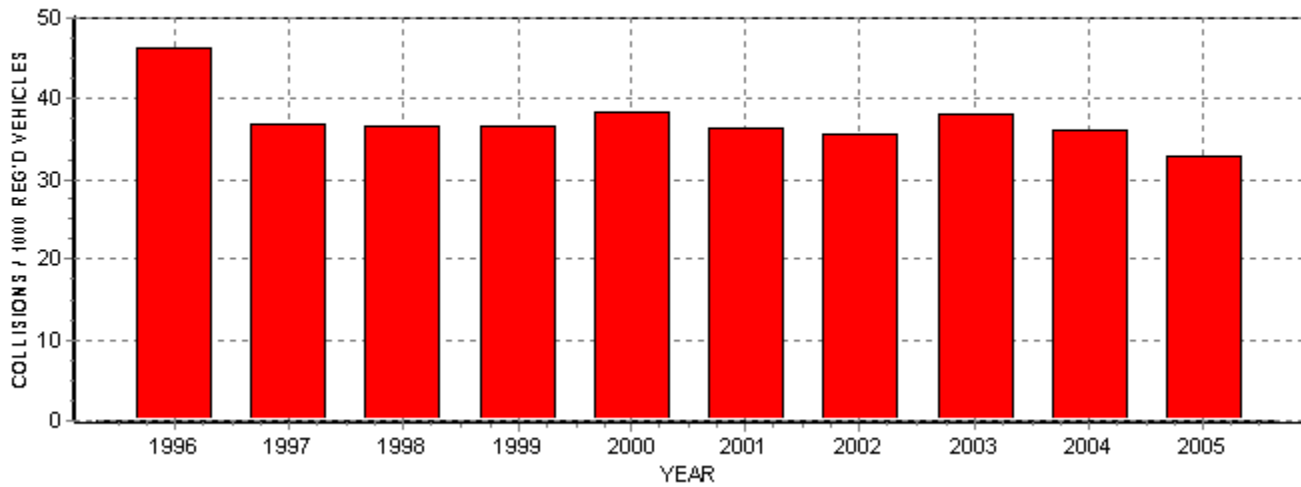




Figure 1.5 Tabular summary of reported collisions per 1000 population

1996 - 2005

| Year | Reported Collisions | Population | Population/Collision Ratio |
|------|---------------------|------------|----------------------------|
| 1996 | 15831 | 630374 | 25.11 |
| 1997 | 14014 | 635007 | 22.07 |
| 1998 | 13976 | 636393 | 21.96 |
| 1999 | 14242 | 646046 | 22.04 |
| 2000 | 15161 | 640278 | 23.68 |
| 2001 | 14622 | 653728 | 22.37 |
| 2002 | 15314 | 650192 | 23.55 |
| 2003 | 16392 | 658579 | 24.89 |
| 2004 | 15873 | 663443 | 23.93 |
| 2005 | 14723 | 665028 | 22.14 |

NOTE: Population Collision Ratio: (Reported Collisions/Population) * 1000

Figure 1.6 Reported collisions per 1000 population

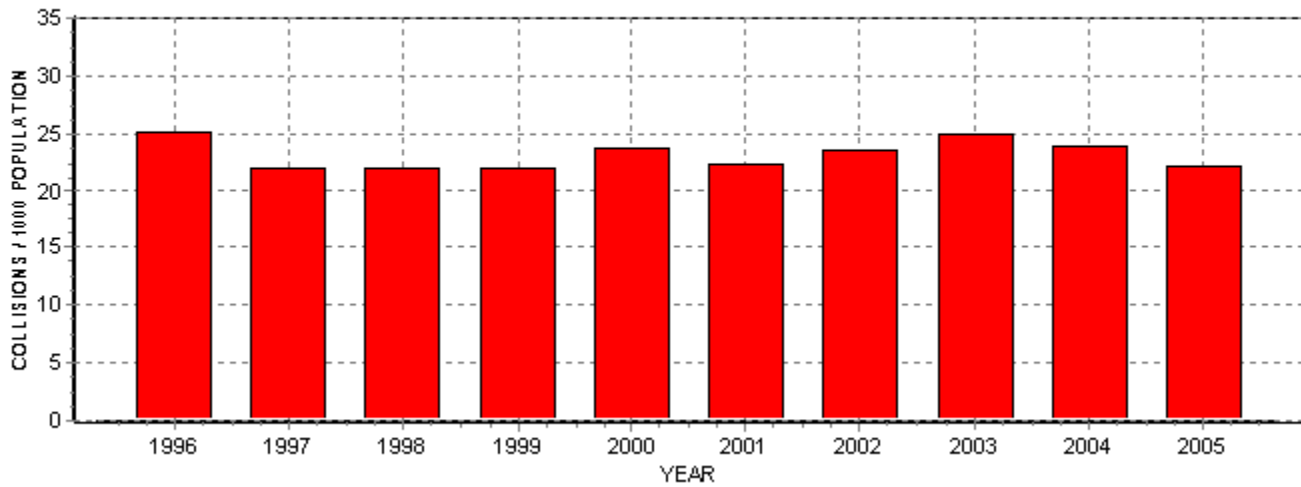




Figure 1.7 Tabular summary of reported collisions by severity **1996 - 2005**

| Year | Fatal | Injury | Property Damage | Reported Collisions |
|------|-------|--------|-----------------|---------------------|
| 1996 | 21 | 4195 | 11615 | 15831 |
| 1997 | 21 | 3570 | 10423 | 14014 |
| 1998 | 20 | 3740 | 10216 | 13976 |
| 1999 | 21 | 3825 | 10396 | 14242 |
| 2000 | 17 | 3692 | 11452 | 15161 |
| 2001 | 20 | 3403 | 11199 | 14622 |
| 2002 | 20 | 3462 | 11832 | 15314 |
| 2003 | 21 | 3761 | 12610 | 16392 |
| 2004 | 21 | 3622 | 12230 | 15873 |
| 2005 | 15 | 3059 | 11649 | 14723 |

Figure 1.8 Reported collisions by severity

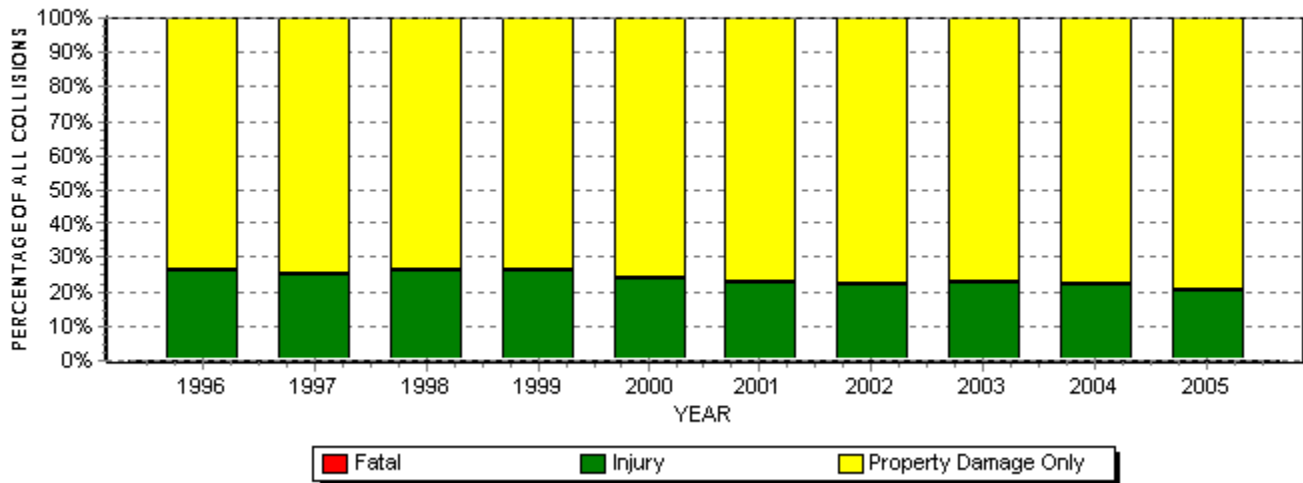


Figure 1.9 Total number of fatal collisions

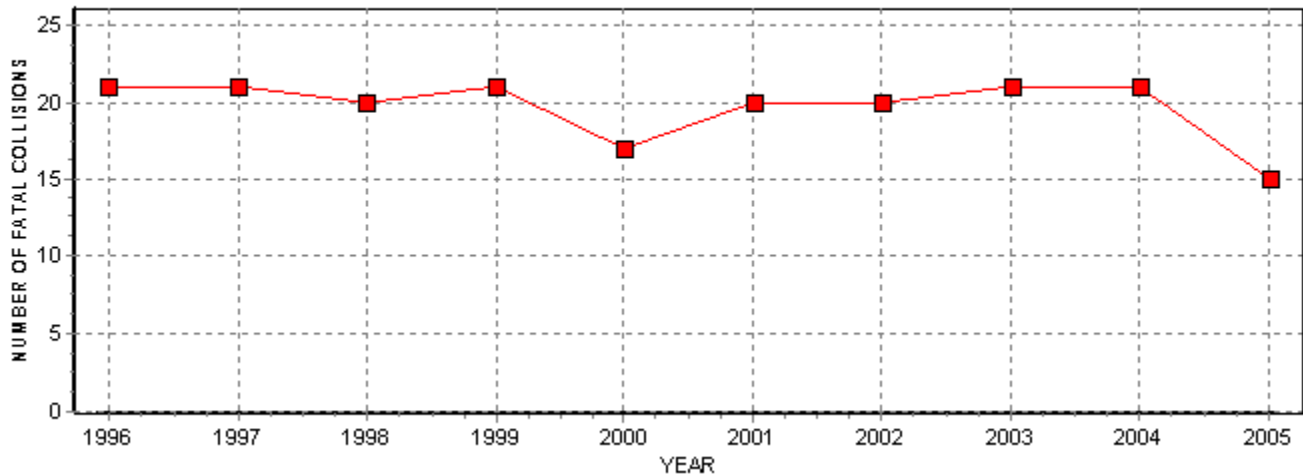


Figure 1.10 Total number of injury and property damage only collisions

