

Section 1. Trends

The following statistics and information explore a ten year history of collision statistics within the City of Winnipeg. Also included in this section are statistics relating to population and registered vehicles. The population statistics have been obtained from Manitoba Health. The registered vehicle statistics have been obtained from Manitoba Transportation and Government Services. It is important to note that collisions in this report refer to reported collisions only and exclude parking lots and back lanes.



Figure 1.1 Tabular summary of reported collisions over past 10 years

1995 - 2004

Year	Reported Collisions
1995	17599
1996	15831
1997	14014
1998	13976
1999	14240
2000	15155
2001	14623
2002	15315
2003	16390
2004	15843

Figure 1.2 Total number of reported collisions over past 10 years

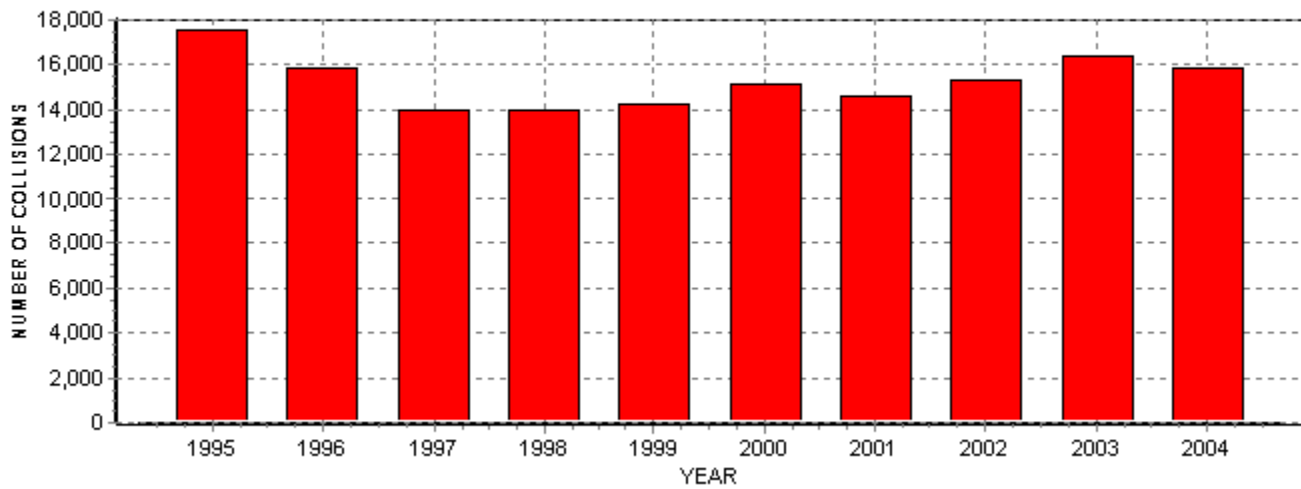




Figure 1.3 Tabular summary of reported collisions per 1000 registered vehicles 1995 - 2004

Year	Reported Collisions	Registered Vehicles	Reg. Veh. Collision Ratio
1995	17599	317600	55.41
1996	15831	342000	46.29
1997	14014	379860	36.89
1998	13976	382810	36.51
1999	14240	389451	36.56
2000	15155	394673	38.40
2001	14623	402613	36.32
2002	15315	428851	35.71
2003	16390	429651	38.15
2004	15843	440728	35.95

NOTE: Registered Vehicle Collision Ratio: (Reported Collisions/Registered Vehicles) * 1000

Figure 1.4 Reported collisions per 1000 registered vehicles

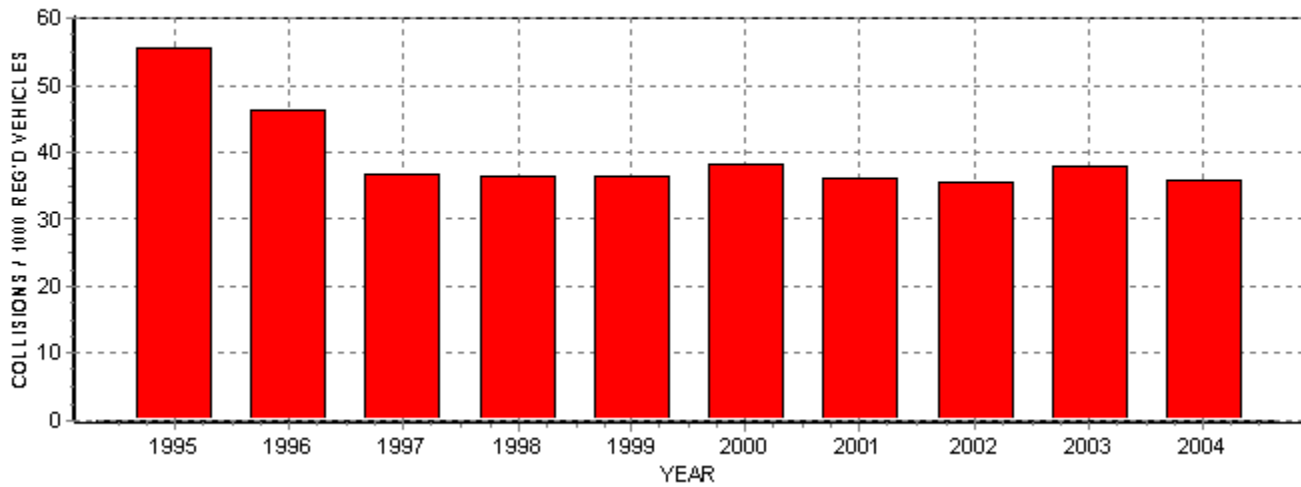




Figure 1.5 Tabular summary of reported collisions per 1000 population **1995 - 2004**

Year	Reported Collisions	Population	Population/Collision Ratio
1995	17599	632000	27.85
1996	15831	630374	25.11
1997	14014	635007	22.07
1998	13976	636393	21.96
1999	14240	646046	22.04
2000	15155	640278	23.67
2001	14623	653728	22.37
2002	15315	650192	23.55
2003	16390	658579	24.89
2004	15843	663443	23.88

NOTE: Population Collision Ratio: (Reported Collisions/Population) * 1000

Figure 1.6 Reported collisions per 1000 population

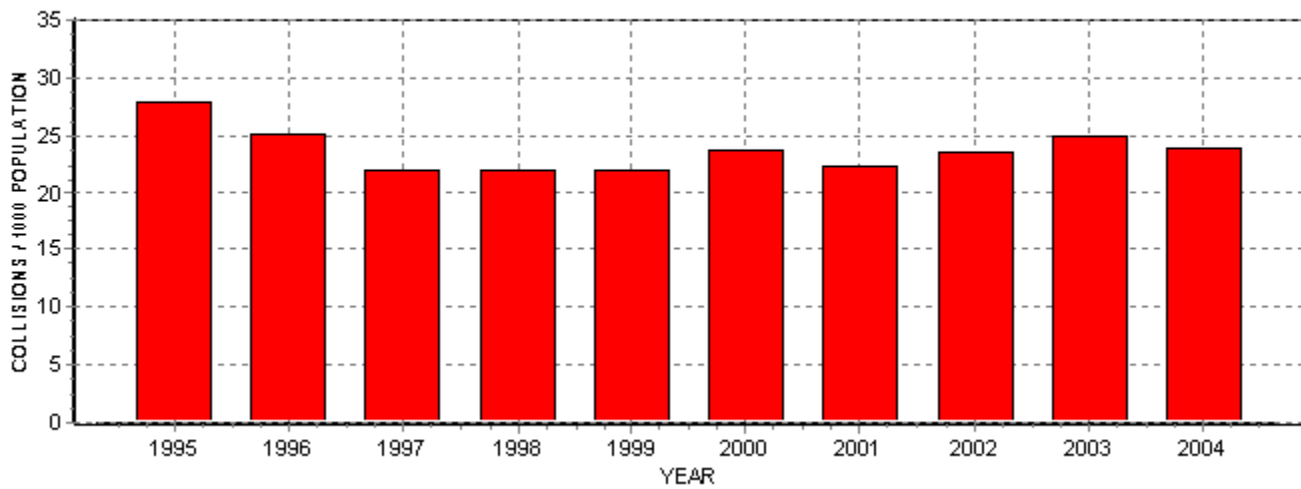




Figure 1.7 Tabular summary of reported collisions by severity 1995 - 2004

Year	Fatal	Injury	Property Damage	Reported Collisions
1995	19	5190	12390	17599
1996	21	4195	11615	15831
1997	21	3570	10423	14014
1998	20	3740	10216	13976
1999	21	3824	10395	14240
2000	17	3690	11448	15155
2001	20	3403	11200	14623
2002	20	3462	11833	15315
2003	21	3761	12608	16390
2004	20	3613	12210	15843

Figure 1.8 Reported collisions by severity

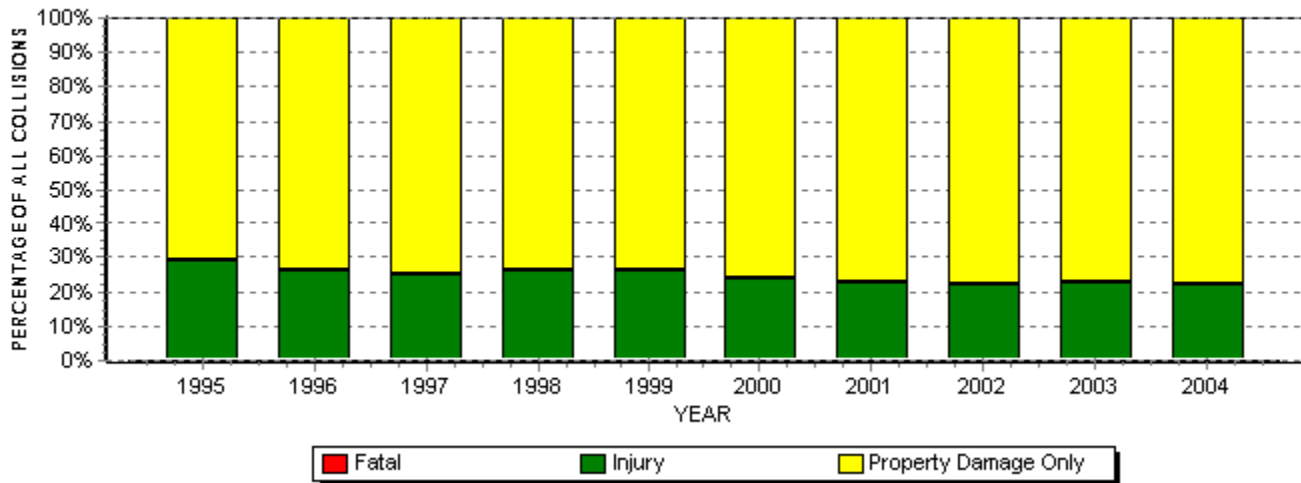


Figure 1.9 Total number of fatal collisions

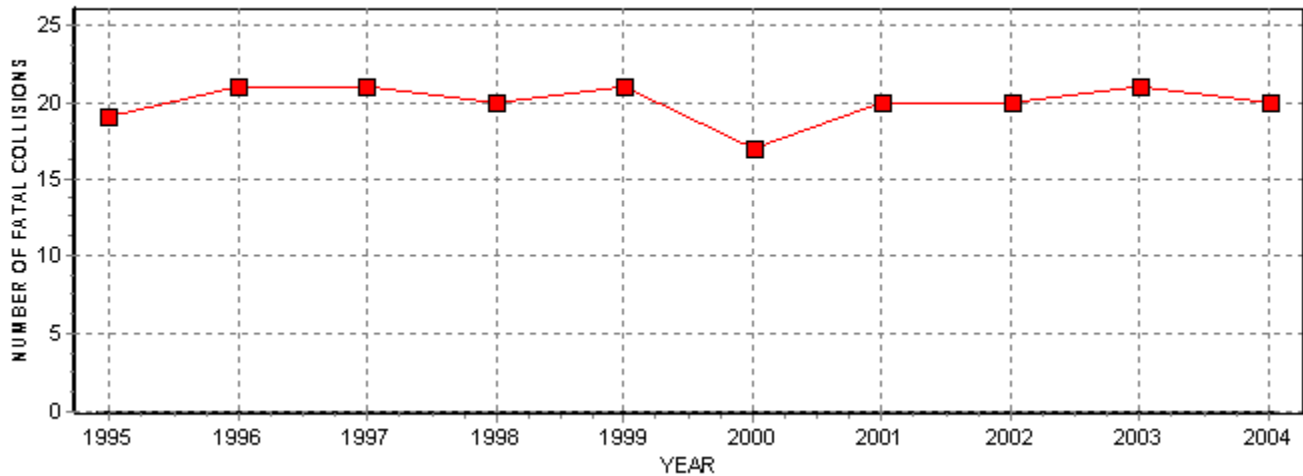


Figure 1.10 Total number of injury and property damage only collisions

