

Section 2. Collisions

This section classifies collisions by type of collision, traffic control violations, roadway locations, vehicle type, time of collision and environmental conditions.

Figure 2.1 Total number of reported collisions by severity and initial impact type

INITIAL IMPACT	FATAL	INJURY	PROPERTY DAMAGE ONLY	REPORTED COLLISIONS
Rear end	1	1620	4426	6047
Head On	0	40	63	103
Opposing sideswipe	0	43	191	234
Side swipe (same direction)	1	166	1634	1801
Overturn	1	33	265	299
Right turn (into same dir.)	0	35	167	202
Right turn 2 (into opp. dir.)	0	25	55	80
Left turn (into opp. dir.)	1	95	306	402
Left turn 2 (into same dir.)	0	38	241	279
Left turn 3 (left with thru)	1	360	1042	1403
Intersection 90	1	683	1926	2610
Off road right	0	10	57	67
Off road left	0	14	32	46
Fixed object	3	172	782	957
Parking	0	3	58	61
Pedestrian	8	320	5	333
Other	0	31	137	168
Unknown	0	3	60	63
TOTAL	17	3691	11447	15155

Figure 2.2 Total number of reported collisions by severity and traffic control type

TRAFFIC CONTROL	FATAL	INJURY	PROPERTY DAMAGE ONLY	REPORTED COLLISIONS
Traffic signal/control device	4	1804	4957	6765
Stop	2	498	1521	2021
Rt. turn on red	0	7	22	29
Lt. turn on red	0	8	13	21
Yield	0	123	351	474
Officer/Flagman/School guard	0	9	11	20
Merge	0	7	22	29
4-way stop	0	46	98	144
Turn controls	0	0	1	1
Flashing signal light	0	7	23	30
Overhead signs	0	1	2	3
R.R. gates	0	7	8	15
R.R. auto controls	0	2	7	9
R.R. Crossing	0	5	10	15
School zone	0	0	1	1
Warning sign	0	0	2	2
Pedestrian crosswalk	0	11	29	40
Pedestrian corridor	0	96	172	268
School crossing	0	0	1	1
Flashing school signals	0	2	2	4
Unknown	1	102	402	505
Other	0	26	112	138
N/A	10	930	3680	4620
TOTAL	17	3691	11447	15155

Figure 2.3 Total number of reported collisions by severity and road location

ROAD LOCATION	FATAL	INJURY	PROPERTY DAMAGE ONLY	REPORTED COLLISIONS
Intersection	7	2647	7256	9910
Between intersections	9	794	3260	4063
Intersection or private drive	0	153	596	749
Back lane (intersection)	0	24	70	94
Parking lot (intersection)	0	3	34	37
Railroad level crossing	0	11	22	33
Bridge/overpass	1	41	148	190
Tunnel/underpass	0	7	23	30
Passing / climbing lane	0	0	5	5
Unknown	0	7	25	32
Other	0	1	6	7
N/A	0	3	2	5
TOTAL	17	3691	11447	15155

NOTE: The term "INTERSECTION", used later, refers to "At intersection"; where as the term "NON-INTERSECTION", used later, refers to all other locations.

Figure 2.4 Total number of reported collisions by type of vehicle

VEHICLE TYPE	NUMBER OF COLLISIONS	PERCENTAGE
Automobile	13589	61.94
Mini-van / multi-purpose van	2099	9.57
Van under 4500 kg	627	2.86
Pick-up under 4500 kg	2404	10.96
Truck over 4500 kg	271	1.24
Power unit for semi-trailer	189	0.86
Truck / camper	11	0.05
Motor home	6	0.03
Truck - other	191	0.87
School bus	20	0.09
Other school vehicle	2	0.01
Transit bus (urban)	139	0.63
Inter-city bus	34	0.15
Bus (other)	11	0.05
Motorcycle / scooter	60	0.27
Moped	1	0.00
Bicycle	205	0.93
Ambulance	8	0.04
Fire	16	0.07
Police	27	0.12
Mobility vehicle	1	0.00
Motorized snow vehicle	2	0.01
Construction equipment	36	0.16
Train / other rail vehicle	4	0.02
Snowmobile	1	0.00
4-wheel-drive motor vehicle(off ro	1	0.00
Other	11	0.05
Unknown	1931	8.80
N/A	43	0.20

NOTE: If two motorcycles, one bicycle and two passenger cars were involved in a collision, this table would have only one added to each of the passenger car, motorcycle and bicycle totals.

Figure 2.5 Total number of reported collisions by hour of day and day of week

HOUR ENDING	MON	TUE	WED	THU	FRI	SAT	SUN	REPORTED COLLISIONS	%
01:00	17	18	15	17	30	45	50	192	1.3
02:00	15	7	17	17	23	73	55	207	1.4
03:00	13	19	16	16	22	65	52	203	1.3
04:00	11	9	4	11	15	39	31	120	0.8
05:00	3	5	3	7	6	17	13	54	0.4
06:00	4	5	7	17	11	19	7	70	0.5
07:00	30	32	32	26	42	20	12	194	1.3
08:00	86	98	135	112	104	31	15	581	3.8
09:00	134	152	172	148	128	54	40	828	5.5
10:00	93	93	104	93	123	77	41	624	4.1
11:00	105	94	117	106	112	94	56	684	4.5
12:00	114	112	120	125	158	159	58	846	5.6
13:00	131	133	149	152	181	189	71	1006	6.6
14:00	144	114	160	177	146	173	110	1024	6.8
15:00	129	138	182	145	163	182	128	1067	7.0
16:00	198	211	229	223	233	191	113	1398	9.2
17:00	182	264	219	232	278	156	123	1454	9.6
18:00	166	193	220	227	230	149	96	1281	8.5
19:00	87	113	140	116	140	117	71	784	5.2
20:00	95	87	83	93	144	87	46	635	4.2
21:00	62	55	83	94	85	96	52	527	3.5
22:00	56	52	67	69	100	77	66	487	3.2
23:00	30	38	50	62	88	75	51	394	2.6
24:00	38	43	27	34	98	81	39	360	2.4
Unknown	22	20	11	18	27	19	18	135	0.9
Total	1965	2105	2362	2337	2687	2285	1414	15155	100
%	13.0	13.9	15.6	15.4	17.7	15.1	9.3	100.0	

NOTE: A collision occurring at 2:45 am would appear under the "03:00" hour of the day.
Unknown time means no time recorded.

Figure 2.6 Percentage of total number of reported collisions by hour of day

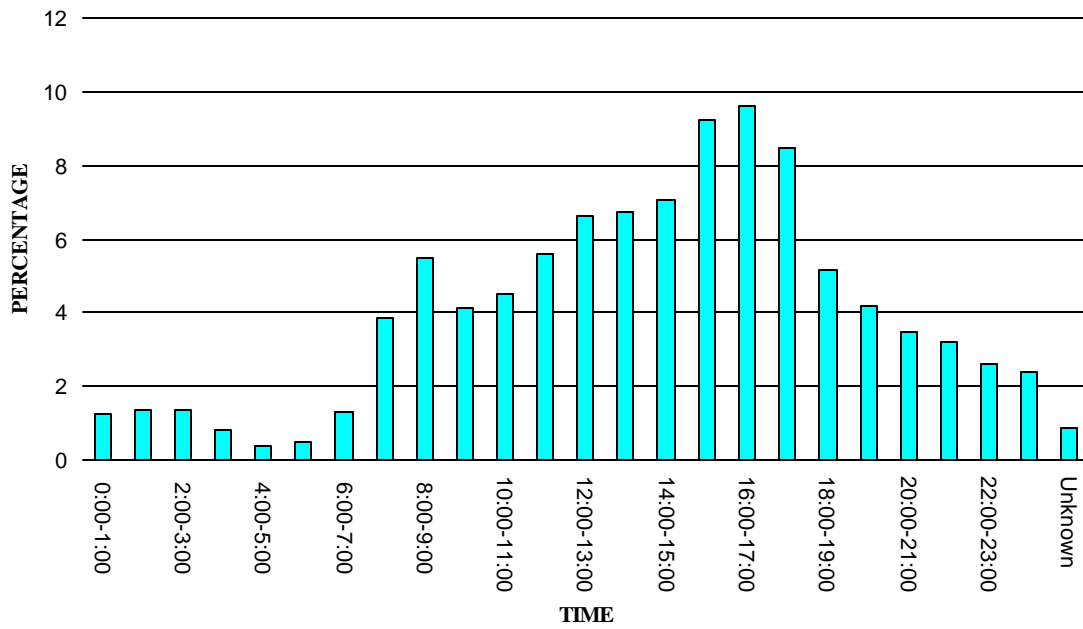


Figure 2.6.1 Percentage of total number of reported collisions by hour of day (Fatal)

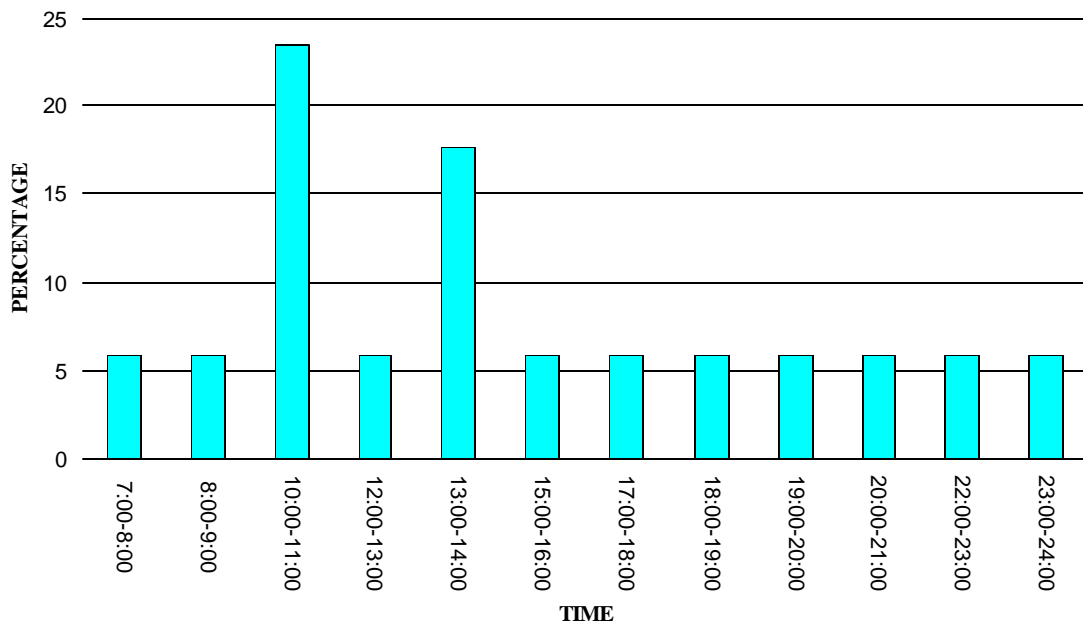


Figure 2.6.2 Percentage of total number of reported collisions by hour of day (Injury)

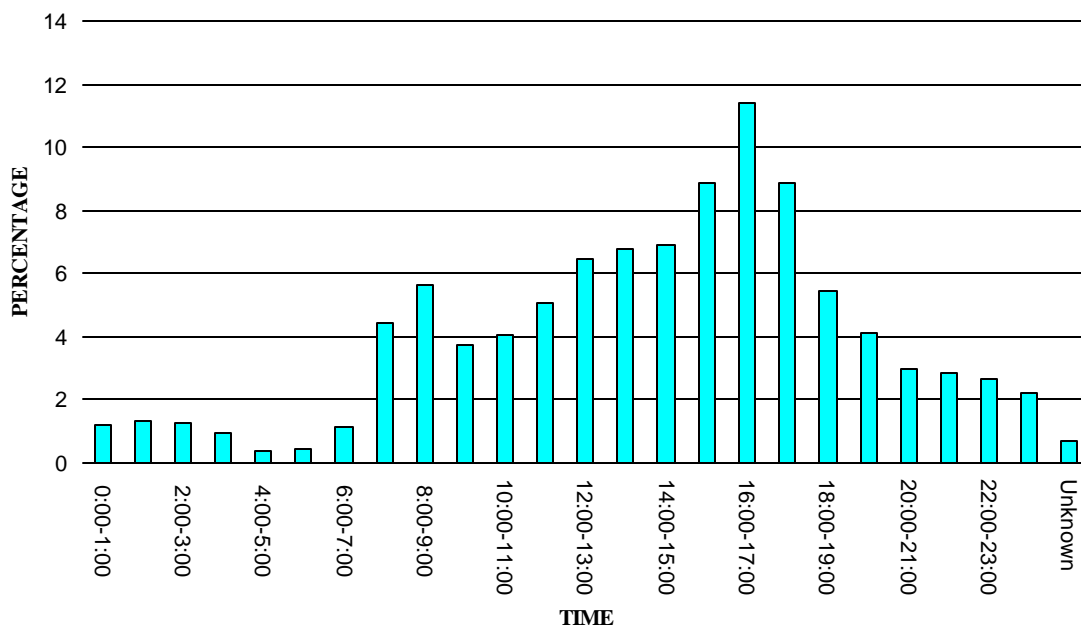


Figure 2.6.3 Percentage of total number of reported collisions by hour of day (P.D. only)

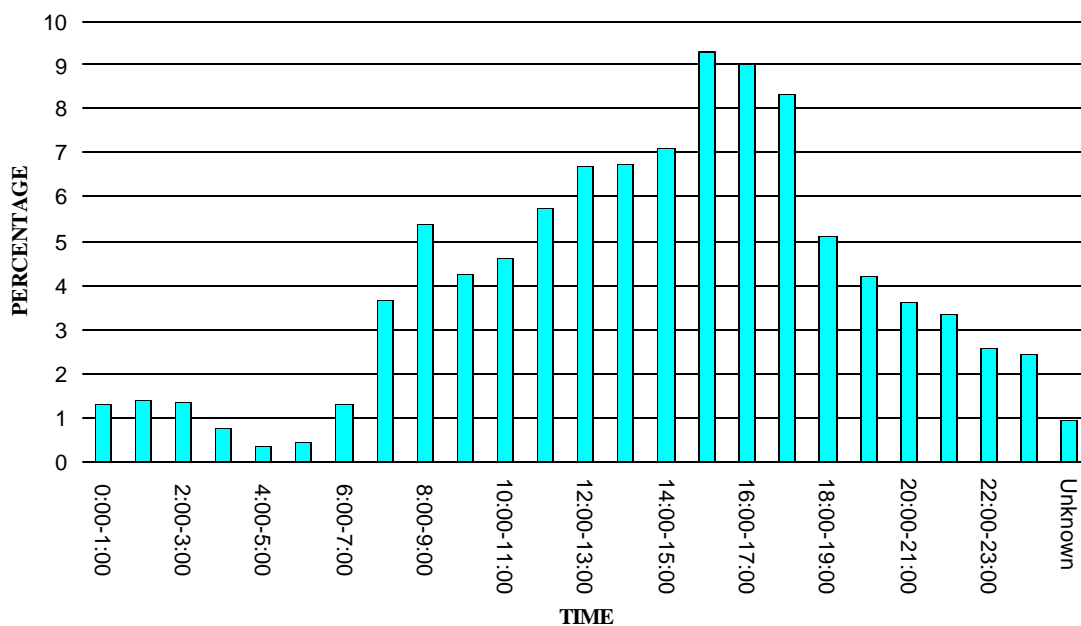


Figure 2.7 Percentage of total number of reported collisions by day of week

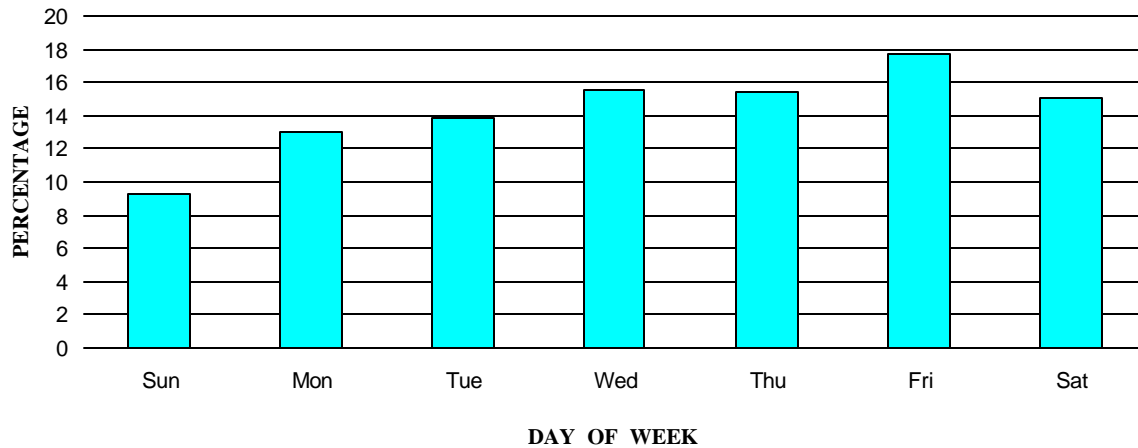


Figure 2.8 Total number of reported collisions by severity and day of week

DAY OF WEEK	FATAL	INJURY	PROPERTY DAMAGE ONLY	REPORTED COLLISIONS
Sunday	2	354	1058	1414
Monday	2	504	1459	1965
Tuesday	2	526	1576	2104
Wednesday	4	606	1751	2361
Thursday	1	567	1769	2337
Friday	2	621	2064	2687
Saturday	4	513	1768	2285
Unknown	0	0	2	2
TOTAL	17	3691	11447	15155

Figure 2.9 Percentage of total number of reported collisions by month of year

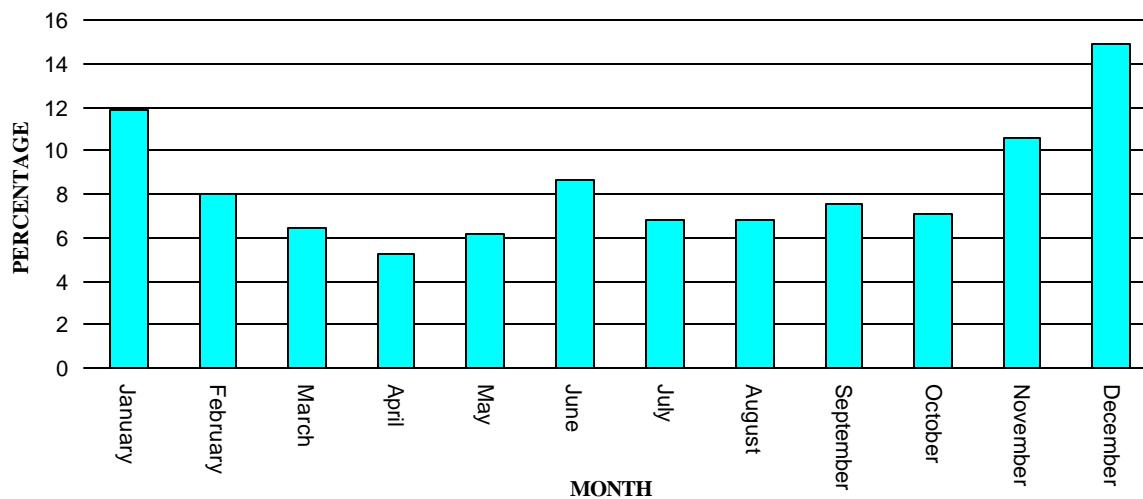


Figure 2.10 Total number of reported collisions by month of year

MONTH	FATAL	INJURY	PROPERTY DAMAGE ONLY	REPORTED COLLISIONS
January	0	368	1425	1793
February	2	295	915	1212
March	0	263	719	982
April	3	225	561	789
May	3	245	692	940
June	0	352	958	1310
July	1	262	767	1030
August	3	272	754	1029
September	1	302	841	1144
October	1	315	752	1068
November	2	395	1202	1599
December	1	397	1861	2259
Total	17	3691	11447	15155

Figure 2.11 Percentage of total number of reported collisions by light condition

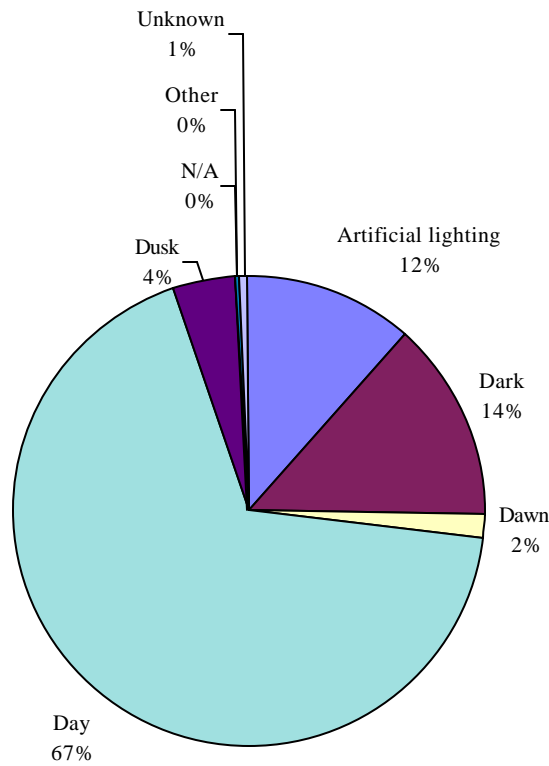


Figure 2.12 Total number of reported collisions by severity and light condition

LIGHT	FATAL	INJURY	PROPERTY DAMAGE ONLY	REPORTED COLLISIONS
Day	13	2553	7688	10254
Dawn	0	51	201	252
Dusk	0	176	501	677
Dark	1	481	1570	2052
Artificial lighting	3	400	1375	1778
Other	0	6	23	29
Unknown	0	22	80	102
N/A	0	2	9	11
TOTAL	17	3691	11447	15155

Figure 2.14 Percentage of total number of reportable collisions by environment condition

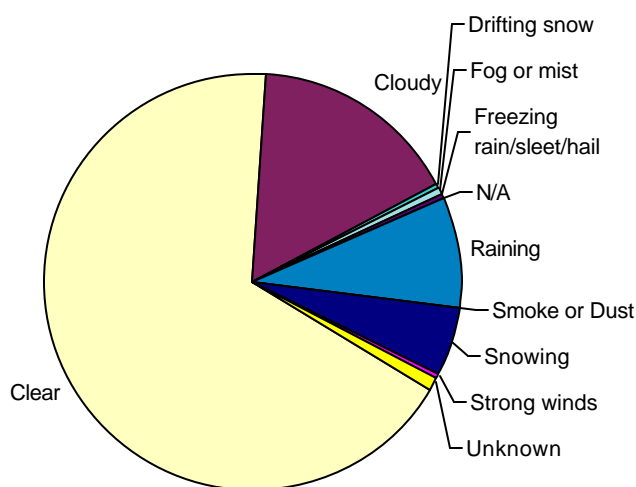


Figure 2.14 Total number of reported collisions by environment condition

WEATHER CONDITION	FATAL	INJURY	PROPERTY DAMAGE ONLY	REPORTED COLLISIONS
Clear	11	2470	7748	10229
Cloudy	5	610	1824	2439
Raining	0	377	925	1302
Snowing	1	168	690	859
Fog or mist	0	18	62	80
Smoke or Dust	0	1	2	3
Freezing rain/sleet/hail	0	9	25	34
Drifting snow	0	10	37	47
Strong winds	0	3	18	21
Unknown	0	25	113	138
N/A	0	0	3	3
TOTAL	17	3691	11447	15155

Figure 2.15 Total number of reported collisions by severity and road location

ROAD LOCATION	FATAL	%	INJURY	%	PROPERTY DAMAGE ONLY	%	REPORTED COLLISIONS	%
Intersection	7	0.05	2647	17.5	7256	47.9	9910	65
Non-Intersection	10	0.07	1044	6.89	4191	27.7	5245	35
TOTAL	17	0.11	3691	24.4	11447	75.5	15155	100.0

Figure 2.16 Total number of reported collisions by road surface condition and by road location

ROAD SURFACE CONDITION	INTERSECTION	NON-INTERSECTION
0	1	0
Dry	5271	2658
Wet	1716	788
Mud	10	4
Snow	796	524
Ice	1794	1094
Slush	179	82
Loose sand / gravel / dirt	70	34
Fresh oil	0	1
Unknown	71	60
N/A	2	0
TOTAL	9910	5245

NOTE: "Intersection" is defined as those collisions which are at intersections.
 "Non-intersection" is defined as all other collisions.