

Section 1. Trends

The following statistics and information explore a ten year history of collision statistics within the City of Winnipeg. Also included in this section are statistics relating to population and registered vehicles. The population statistics have been obtained from Manitoba Health. The registered vehicle statistics have been obtained from Manitoba Transportation and Government Services. It is important to note that collisions in this report refer to reported collisions only and exclude parking lots and back lanes.

Figure 1.1 Total number of reported collisions over past 10 years

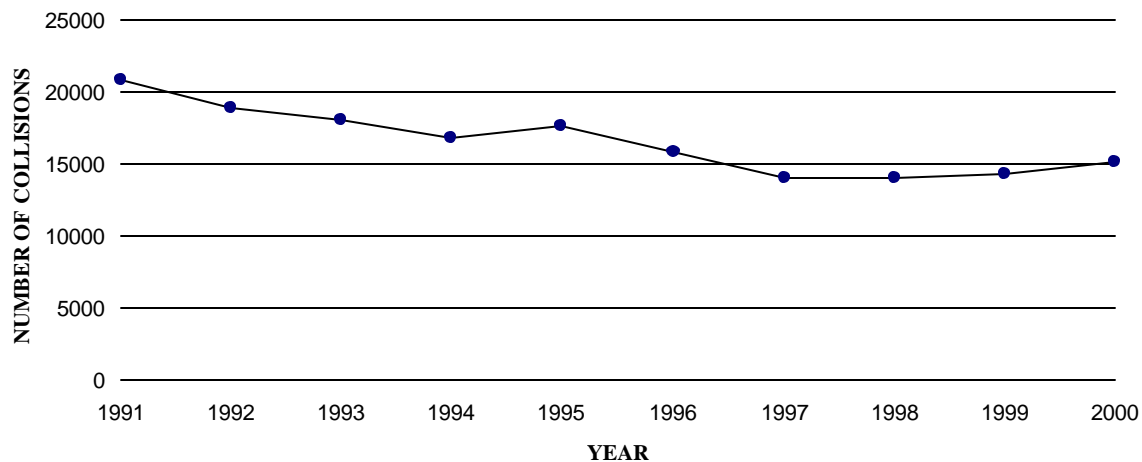


Figure 1.2 Tabular summary of total number of reported collisions over past 10 years

YEAR	REPORTED COLLISIONS
1991	20866
1992	18846
1993	18067
1994	16777
1995	17599
1996	15831
1997	14014
1998	13976
1999	14242
2000	15155

Figure 1.3 Reported collisions per 1000 registered vehicles

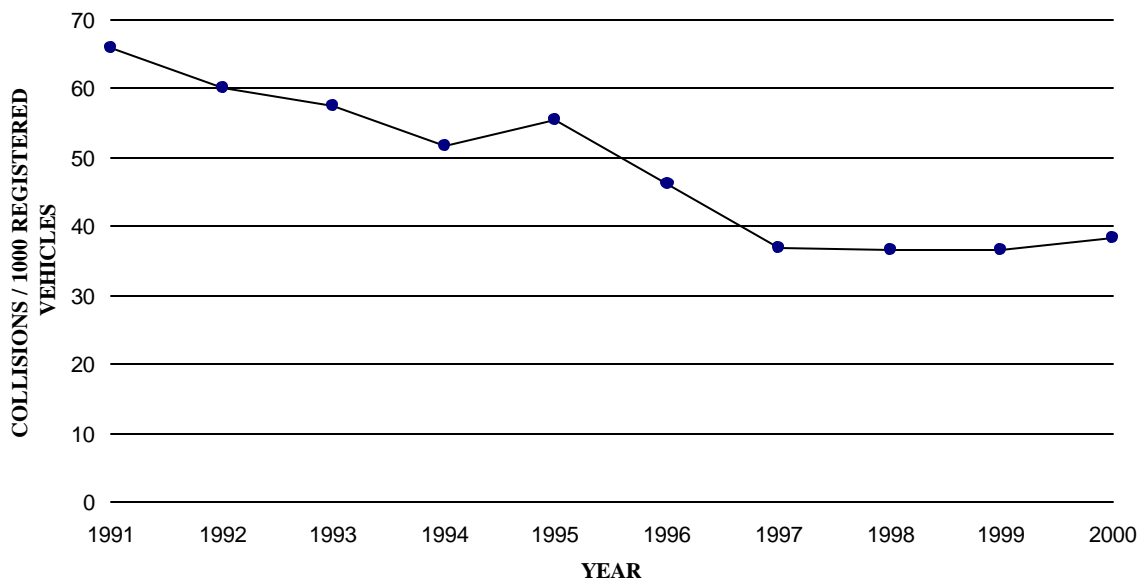


Figure 1.4 Tabular summary of reported collisions per 1000 registered vehicles

YEAR	REPORTED COLLISIONS	REGISTERED VEHICLES	REG.VEH. COLLISION RATIO
1991	20866	316514	65.92
1992	18846	313500	60.11
1993	18067	313500	57.63
1994	16777	324899	51.64
1995	17599	317600	55.41
1996	15831	342000	46.29
1997	14014	379860	36.89
1998	13976	382810	36.51
1999	14242	389451	36.57
2000	15155	394673	38.40

NOTE: Reg.Veh.Collision Ratio: (Reported Collisions/Registered Vehicles) * 1000.

Figure 1.5 Reported collisions per 1000 population

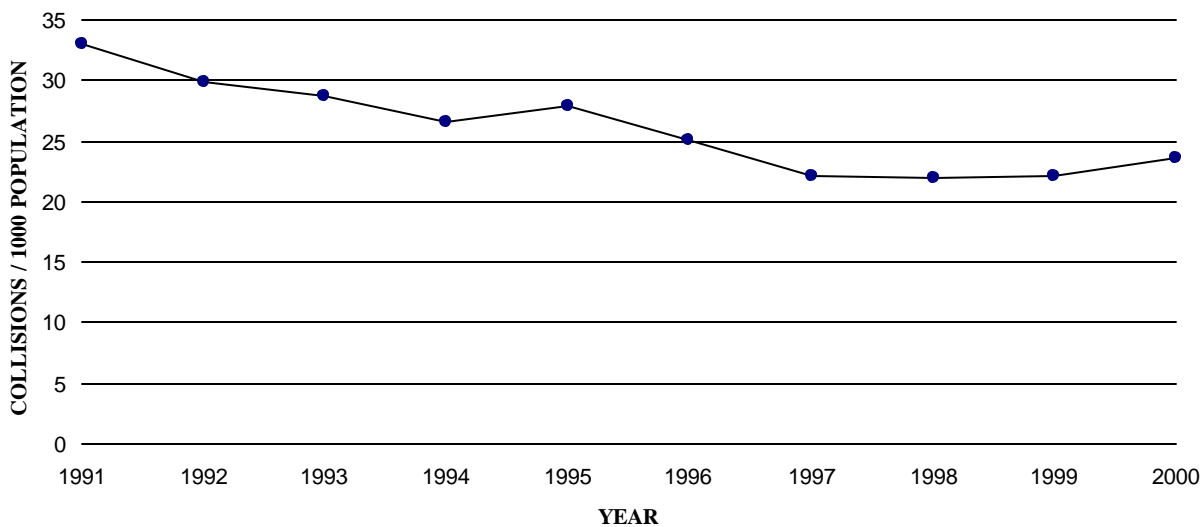


Figure 1.6 Tabular summary of reported collisions per 1000 population

YEAR	REPORTED COLLISIONS	POPULATION	POPULATION COLLISION RATIO
1991	20866	630436	33.10
1992	18846	629138	29.96
1993	18067	630172	28.67
1994	16777	630172	26.62
1995	17599	632000	27.85
1996	15831	630374	25.11
1997	14014	635007	22.07
1998	13976	636393	21.96
1999	14242	646046	22.04
2000	15155	640278	23.67

NOTE: Population Collision Ratio: (Reported Collisions / Population) * 1000.

Figure 1.7 Reported collisions by severity

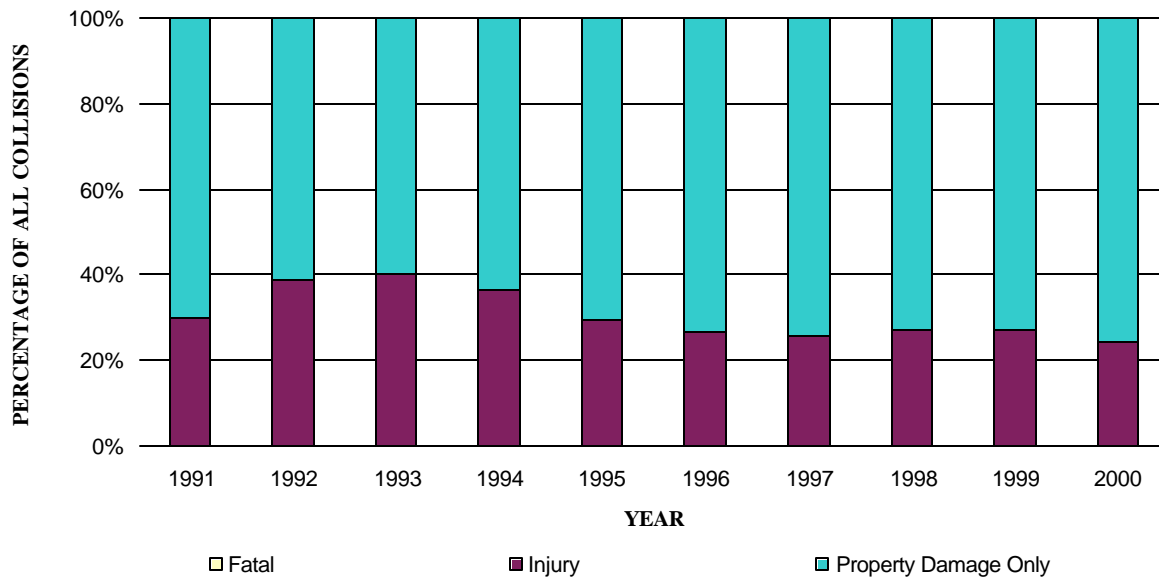


Figure 1.8 Tabular summary of reported collisions by severity

YEAR	FATAL	INJURY	PROPERTY DAMAGE ONLY	REPORTED COLLISIONS
1991	28	6256	14582	20866
1992	27	7244	11575	18846
1993	25	7265	10777	18067
1994	20	6056	10701	16777
1995	19	5190	12390	17599
1996	21	4195	11615	15831
1997	21	3570	10423	14014
1998	20	3740	10216	13976
1999	21	3825	10396	14242
2000	17	3691	11447	15155

Figure 1.9 Total number of fatal collisions

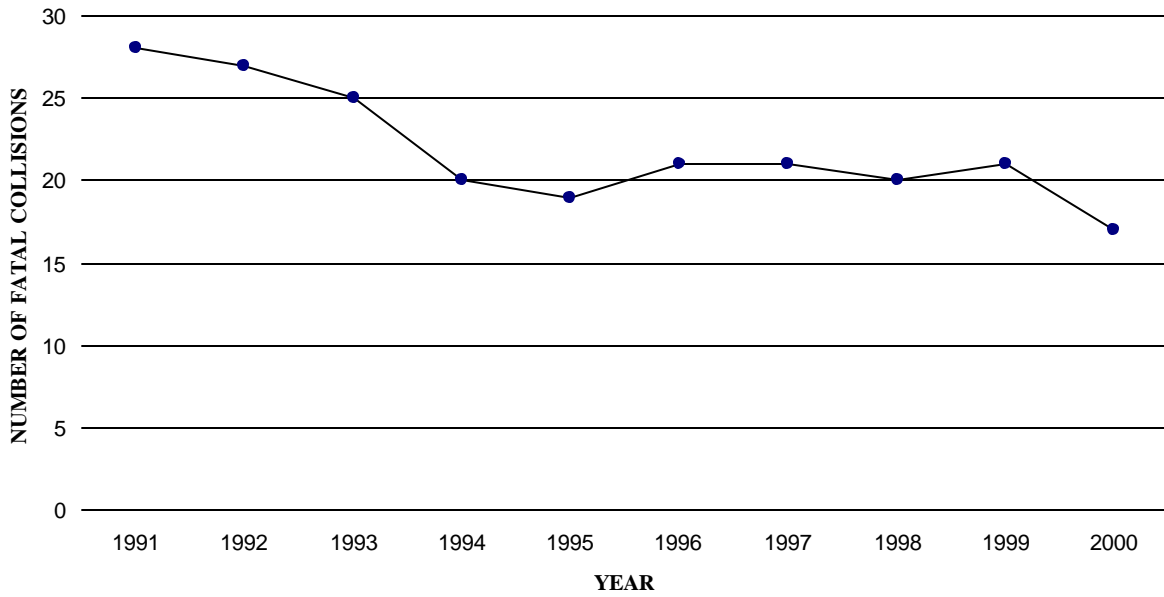


Figure 1.10 Total number of injury and property damage only collisions

