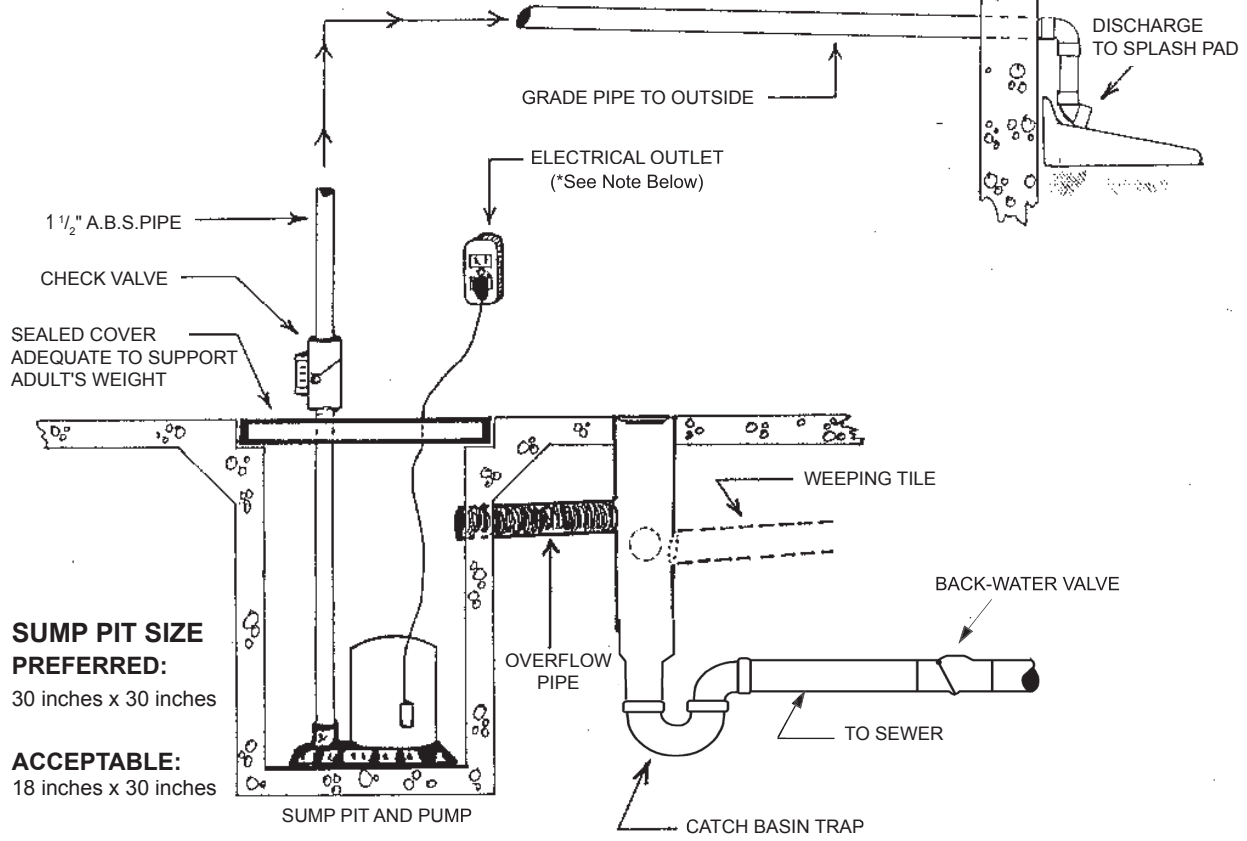


# EXISTING SINGLE FAMILY DWELLINGS ONLY



**SUMP PIT SIZE PREFERRED:**  
30 inches x 30 inches

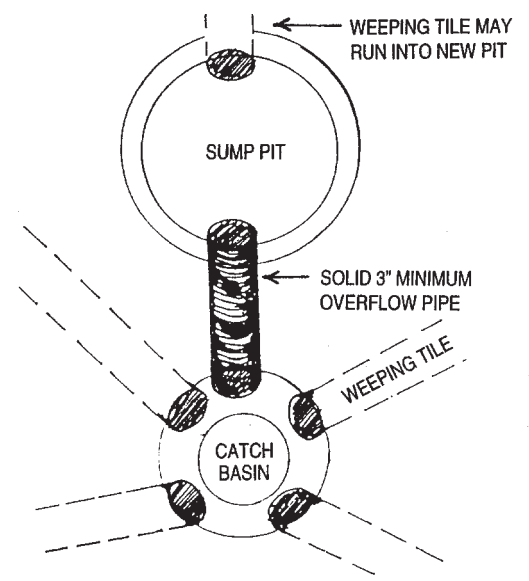
**ACCEPTABLE:**  
18 inches x 30 inches

## SIDE VIEW

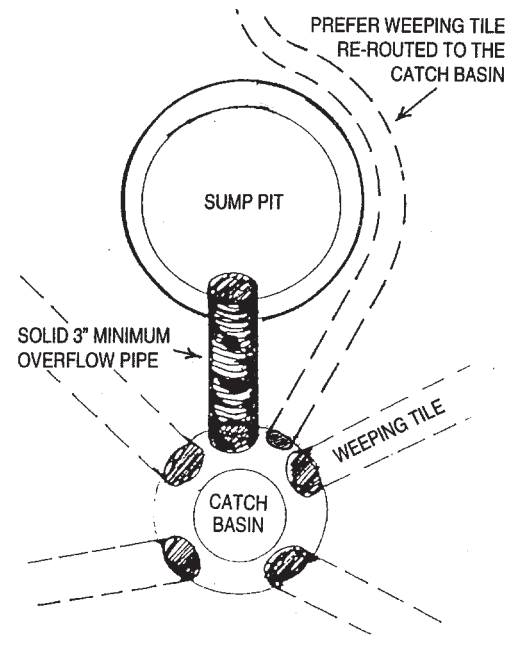
1. BACK-WATER VALVE PROTECTING BASEMENT PLUMBING CLOSES DUE TO SEWER BACK-UP
2. WEeping TILE WATER BEGINS TO BACK-UP IN THE CATCH BASIN AND EVENTUALLY OVER FLOWS INTO SUMP PIT
3. SUMP PIT FILLS, PUMP IS AUTOMATICALLY TURNED ON AND WEeping TILE WATER IS DISCHARGED TO THE OUTSIDE SPLASH PAD

**\*NOTE:** Where a sump pump is installed for the control of water from a subsurface drainage (weeping tile) system:

1. A receptacle must be installed for the connection of the sump pump;
2. The receptacle for the sump pump must be supplied from a branch circuit that supplies no other outlets or equipment; and
3. The installation of the receptacle and the sump pit and pump will require both an electrical permit and a plumbing permit. Electrical and plumbing inspections are required before the work is covered.



**TOP VIEW**

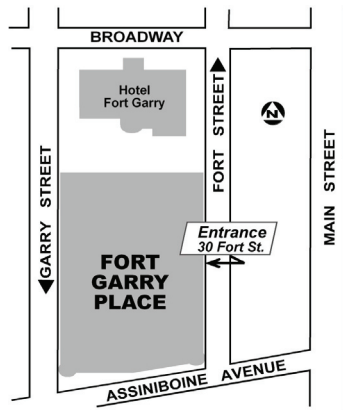


**TOP VIEW**

**In-Person Customer Service Hours are:**

Tuesday to Friday 8:30 am to 4:30 pm - All Zoning, Permits and Plan Examination services are available at Unit 31 – 30 Fort Street.

Mondays 8:30 am to 4:30 pm are reserved for telephone inquiries and completed application drop-offs. This enables Zoning and Permits staff to process building and development applications received throughout the week.



*Every effort has been made to ensure the accuracy of information contained in this booklet. However, in the event of a discrepancy between this booklet and the governing City of Winnipeg By-law, the By-law will take precedence.*



*For more information on this brochure please contact:*

**Plan Examination Branch**

**PH: (204) 986-5268**

**FAX: (204) 986-7307**

**Housing Inspections Branch**

**PH: (204) 986-5300**

**FAX: (204) 942-2008**

or



**Winnipeg**  
**at your service.**

The City of Winnipeg  
Planning, Property and Development Department  
31 - 30 Fort Street  
Winnipeg, Manitoba  
R3C 4X7

[www.winnipeg.ca/ppd](http://www.winnipeg.ca/ppd)

March 2000

# Sump Pit Installation Guidelines

***Guidelines for the  
installation of a sump  
pump and pit for an  
existing single family  
dwelling***