



## FOR LEASE

### Portage & Main Concourse

(365 Main Street)

#### PROPERTY INFORMATION

- Location: 365 Main Street, underground Portage and Main Concourse
- Site size: 646 sq. ft. as shown on Misc. Plan No. 11423/3
- Improvements: Vacant commercial space
- Use: Ideally suited for businesses with a low volume of incoming materials, such as an insurance agency, travel agency, or specialty boutique.

The subject property is to be leased on an “as is” basis. Any interested party should satisfy themselves as to the suitability of this property for their purposes. The City provides no representations or warranties of any kind whatsoever.

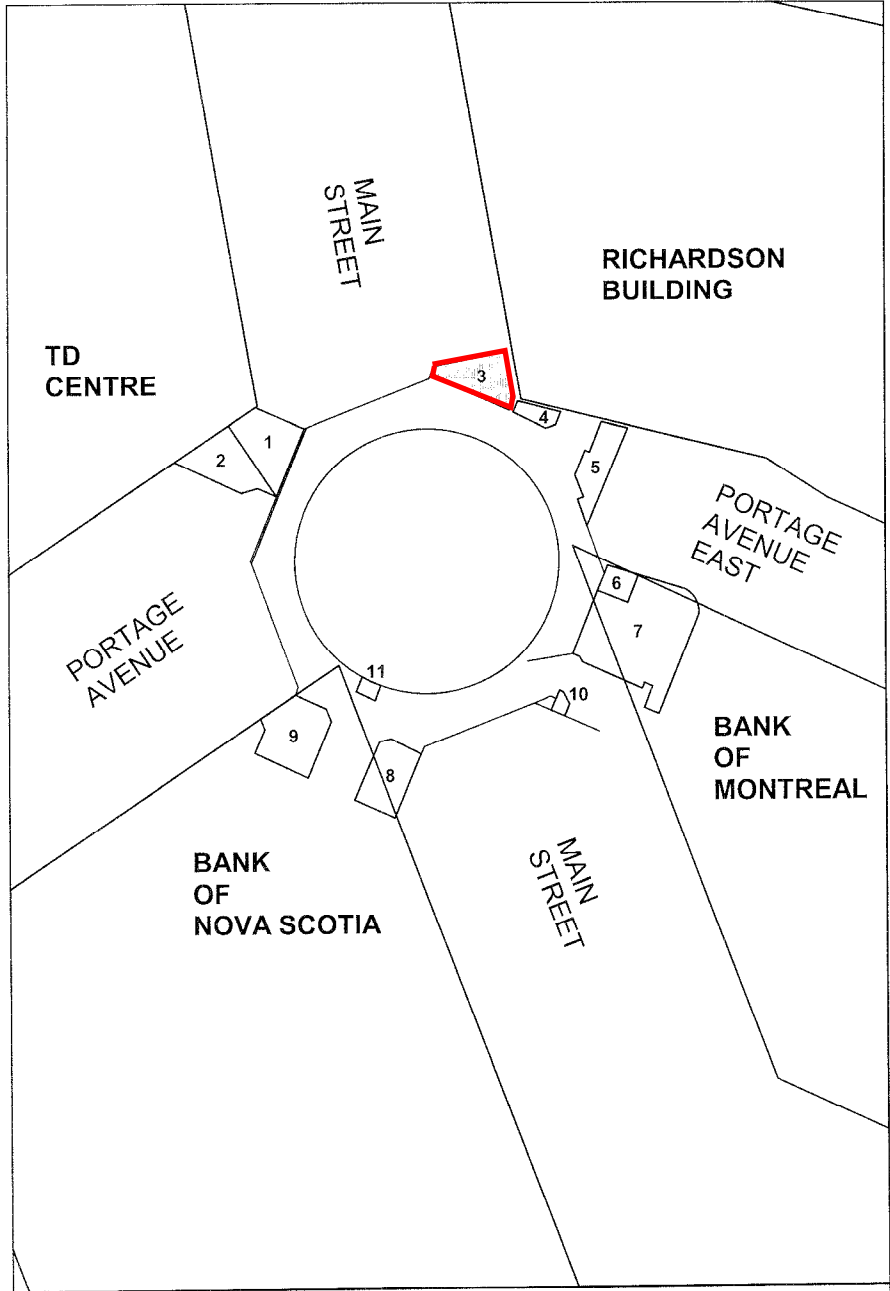
**Note: The City of Winnipeg does not pay commission on leases.**

For further information, please contact:

**Kelly Udell**, Real Estate Officer

Phone: (204) 986 – 2334 Fax: (204) 944 – 8476

Email: [kudell@winnipeg.ca](mailto:kudell@winnipeg.ca)



 LEASED AREA 646 sq.ft.



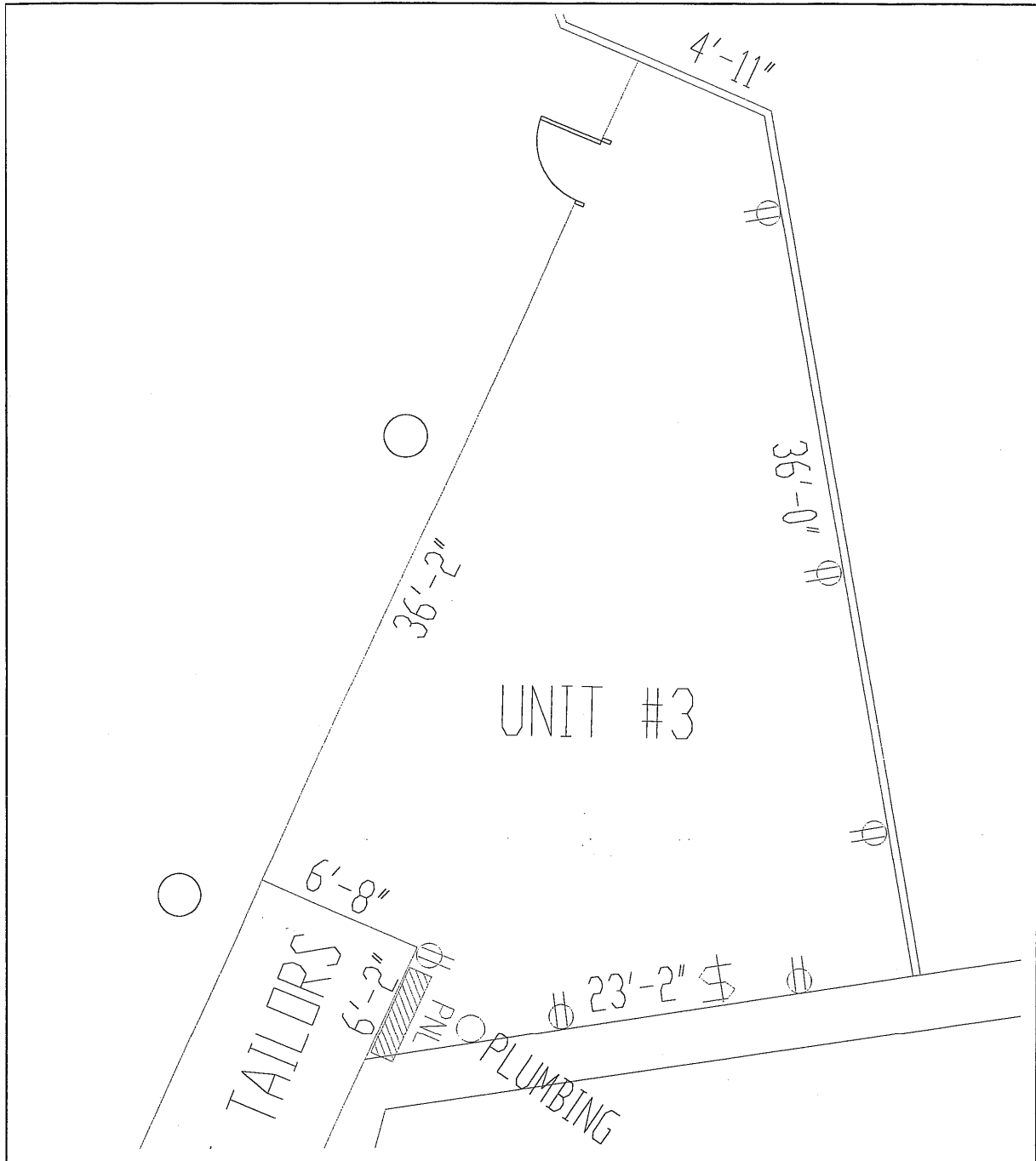
Date: 2004-OCT-12  
 District: CC  
 File: 4288 / 3  
 Scale: 1:750


NOTE:  
 Information displayed hereon has been compiled or computed from a variety of sources  
 and should be used as a general guide only.  
 No warranty is expressed or implied regarding the accuracy of such information.

**CITY OF WINNIPEG  
 PLANNING, PROPERTY AND DEVELOPMENT DEPT.  
 LAND INFORMATION & MAPPING SERVICES**

**MISC. PLAN NO. 11423 / 3**

SEE SERIES 4894



 CITY OF WINNIPEG PLANNING, PROPERTY AND DEVELOPMENT DEPARTMENT CIVIC ACCOMMODATIONS DIVISION 300-65 GARRY STREET R3C 4K4		PROJECT <b>SHOPS OF WINNIPEG SQUARE          CONCOURSE</b> 365 MAIN STREET		SHEET TITLE <b>RETAIL SPACE LAYOUT, DIMENSIONING          UNIT #3</b>	
DRAWN BY mbd	CHECKED BY ku	APPROVED BY ku	DATE 2008.01.21 eFILE UNITS3,4,5.dwg	SCALE N.T.S. PROJECT NO. 2008-001	SHEET NO. <b>C1</b>

DRAWING SHEET SIZE: A (8-1/2"x11") PLOT 1:1