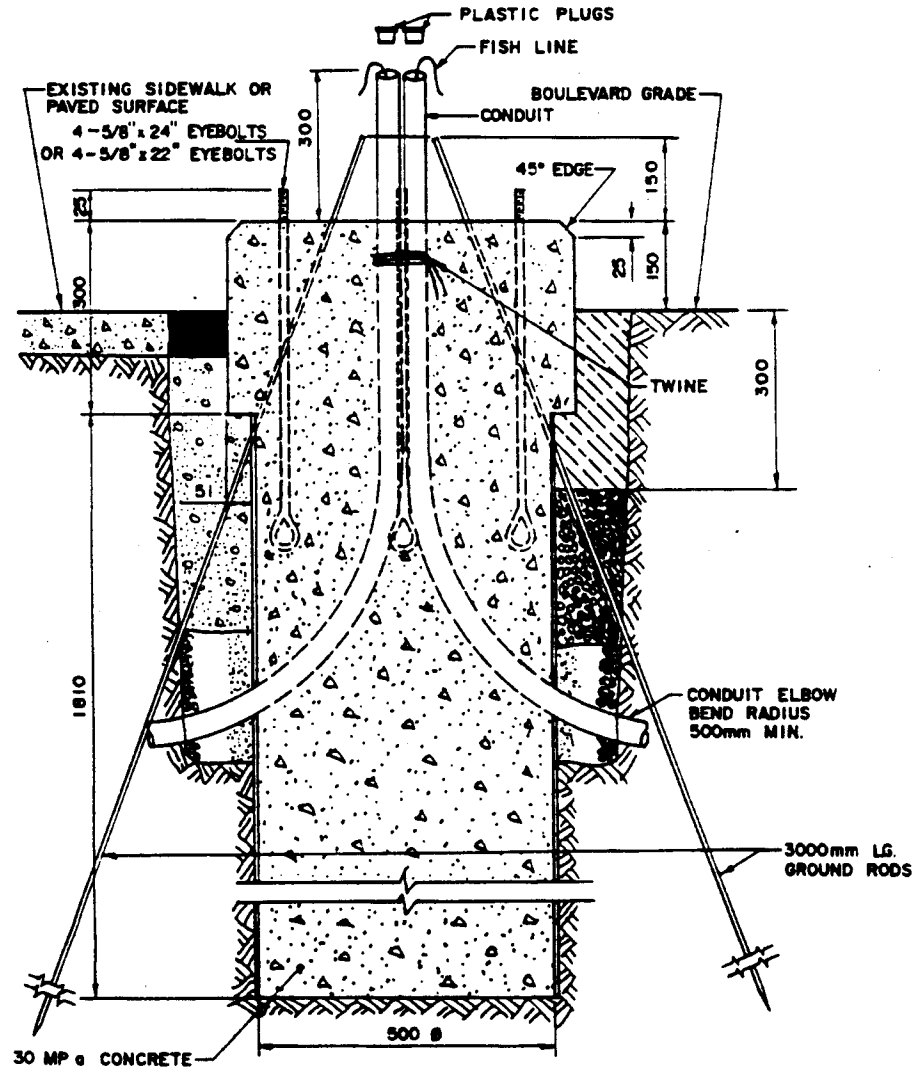


FRONT OF CONTROLLER
PLAN VIEW

- Notes:
1. 500 mm forming tube, square top form and anchor bolt template shall be used. (Drawing ST-103)
 2. Threaded portion of anchor eyebolts shall be coated with oil prior to concrete pour.
 3. All conduits shall be bundled into a group in centre of base, and tied together below the top of the base prior to concrete pour.
 4. Terminate conduits a minimum of 300mm above base.
 5. Install 2 ground rods at every base.
 6. Contractor shall remove top forms, and salvage nuts and anchor eyebolt template following a minimum 24 hour concrete curing period.
 7. Backfill shall conform to requirements of Drawing No. ST-101, "Standard Beddings and Backfills for Underground Traffic Signals Works".



SECTION A-A

DIMENSIONS ARE IN MILLIMETRES
(Unless otherwise noted)

REVISIONS		
NO.	DATE	DESCRIPTION

The City Of Winnipeg
Works & Operations Division

Referenc. Spec. No.
CW 3620-R5

CONCRETE CONTROLLER BASE

Designed By: *[Signature]* Drawn By: *[Signature]* Scale: **N.T.S.**
 Check By: *[Signature]* Date: **89-04-12** Drawing No: **ST-20-A**
 Approved By: *[Signature]*