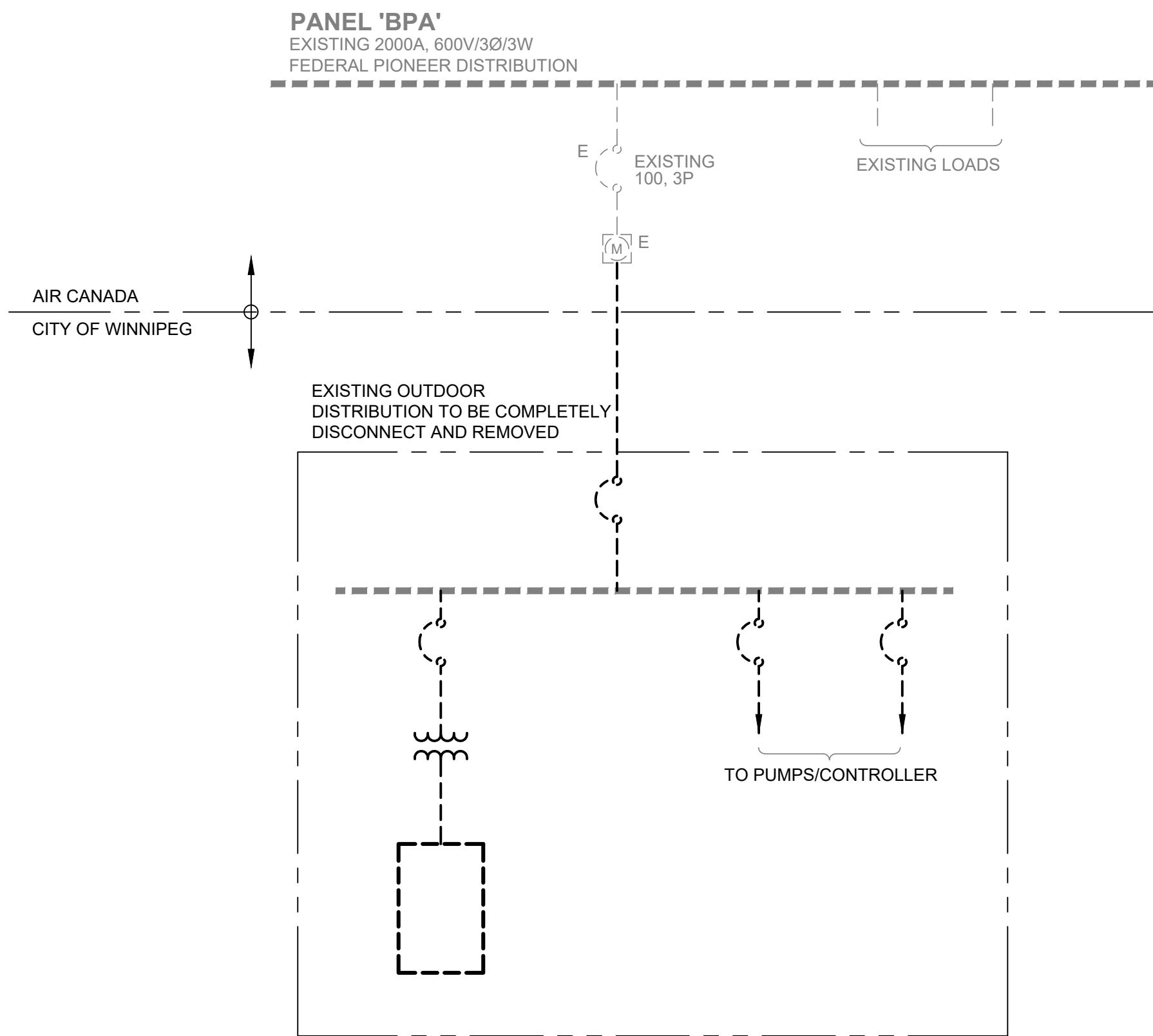
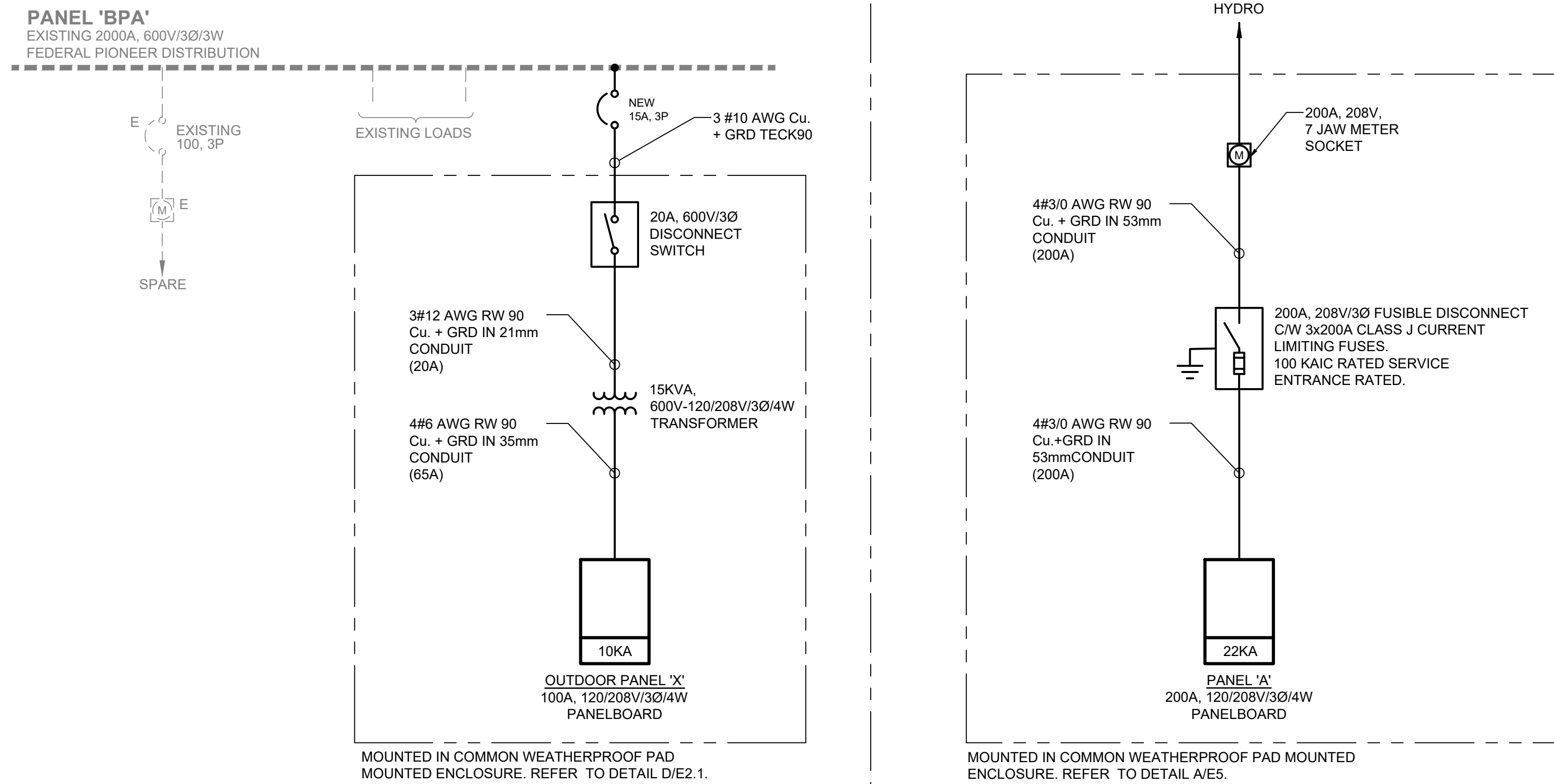


SUPPLY: 208V 3Ø 4W MAINS AMPACITY: 100 INCOMING: ■ BREAKER □ LUGS MAIN BREAKER REQUIRED: ■ YES □ NO MAIN BREAKER AMPS: BUS MATERIAL: ■ COPPER □ ALUMINUM BUS AND BREAKER RATING: 10kA			NAME PLATE: NEW PANEL 'X'			LOCATION: OUTDOOR MOUNTING: ■ SURFACE □ FLUSH MANUFACTURER: MODEL NO: BREAKER: □ PLUG-IN ■ BOLT-ON SPD: □ YES ■ NO SERVICE ENTRANCE RATED: □ YES ■ NO								
REV	CCT	DESCRIPTION	VA	P	BKR	A	B	C	BKR	P	VA	DESCRIPTION	CCT	REV
1	EXISTING CIRCUIT		-	1	15	●			15	1	-	SPACE		2
3	EXISTING CIRCUIT		-	1	15	●				-	-	SPACE		4
5	EXISTING CIRCUIT		-	1	15	●				-	-	SPACE		6
7	EXISTING CIRCUIT		-	1	15	●				-	-	SPACE		8
9	EXISTING CIRCUIT		-	1	15	●				-	-	SPACE		10
11	SPARE		-	1	15	●				-	-	SPACE		12
13	SPARE		-	1	15	●				-	-	SPACE		14
15	SPARE		-	1	15	●				-	-	SPACE		16
17	SPARE		-	1	15	●				-	-	SPACE		18
19	SPARE		-	1	15	●				-	-	SPACE		20
21	SPARE		-	1	15	●				-	-	SPACE		22
23	SPARE		-	1	15	●				-	-	SPACE		24
			LOAD 'A'			LOAD 'B'					LOAD 'C'			
			0			0					0			
NOTES: PROVIDE NECESSARY CIRCUIT BREAKERS TO CONNECT ALL EXISTING CIRCUITS.														

SUPPLY: 208V 3Ø 4W MAINS AMPACITY: 200 INCOMING: ■ BREAKER □ LUGS MAIN BREAKER REQUIRED: ■ YES □ NO MAIN BREAKER AMPS: BUS MATERIAL: ■ COPPER □ ALUMINUM BUS AND BREAKER RATING: 22kA			NAME PLATE: NEW PANEL 'A'			LOCATION: EXTERIOR MOUNTING: ■ SURFACE □ FLUSH MANUFACTURER: MODEL NO: BREAKER: □ PLUG-IN ■ BOLT-ON SPD: □ YES ■ NO SERVICE ENTRANCE RATED: □ YES ■ NO								
REV	CCT	DESCRIPTION	VA	P	BKR	A	B	C	BKR	P	VA	DESCRIPTION	CCT	REV
1	EXTERIOR LUMINAIRES		171	1	15	●			15	1	600	EXTERIOR RECEPTACLES		2
3	POLE TOP RECEPTACLES		200	1	15	●			15	1	200	PIT RECEPTACLE		4
5	POLE TOP RECEPTACLES		200	1	15	●			20	1	200	STAGE RECEPTACLE		6
7	POLE TOP RECEPTACLES		200	1	15	●			15	1	200	BOTTLE FILLING STATION		8
9	POLE TOP RECEPTACLES		200	1	15	●			30	1	-	EVENT PANEL		10
11	POLE TOP RECEPTACLES		200	1	15	●					-	EVENT PANEL		12
13	POLE TOP RECEPTACLES		200	1	15	●			50	2	-	EVENT PANEL		14
15	POLE TOP RECEPTACLES		200	1	15	●					200	STAGE RECEPTACLE		16
17	EVENT PANEL		-	1	20	●					-	SPACE		18
19	EVENT PANEL		-	1	20	●					-	SPACE		20
21	EVENT PANEL		-	1	20	●					-	SPACE		22
23	EVENT PANEL		-	1	20	●					-	SPACE		24
25	SPARE		-	1	15	●					-	SPACE		26
27	SPARE		-	1	15	●					-	SPACE		28
29	SPARE		-	1	15	●					-	SPACE		30
31	SPARE		-	1	15	●					-	SPACE		32
33	SPARE		-	1	15	●					-	SPACE		34
35	SPARE		-	1	15	●					-	SPACE		36
37	SPARE		-	1	15	●					-	SPACE		38
39	SPARE		-	1	15	●					-	SPACE		40
41	SPACE		-	-	-						-	SPACE		42
			LOAD 'A'			LOAD 'B'					LOAD 'C'			
			1,371			1,000					600			



1 EXISTING AND DEMOLITION SINGLE LINE DIAGRAM
NTS



2 MODIFIED SINGLE LINE DIAGRAM
NTS

GENERAL NOTES:

- DIVISION 26 SHALL ARRANGE AND COORDINATE WITH MANITOBA HYDRO FOR NEW SERVICE INSTALLATION. THE COMPLETE INSTALLATION SHALL BE TO THE FULL SATISFACTION OF MANITOBA HYDRO. PAY ALL UTILITY CHARGES AS REQUIRED. REFER TO CASH ALLOWANCE IN SPECIFICATIONS.
- CONFIRM IC RATING WITH MANITOBA HYDRO PRIOR TO ORDERING OF EQUIPMENT.
- DIVISION 26 SHALL PROVIDE ALL TRENCHING AND BACKFILLING FOR ALL INCOMING/OUTGOING WIRING. ALL BELOW GRADE WIRING SHALL BE INSTALLED A MINIMUM OF 915mm BELOW GRADE AND PROVIDED WITH MECHANICAL PROTECTION AND CABLE MARKING TAPE.
- COORDINATE ALL IC RATINGS OF EQUIPMENT WITH MANUFACTURER. SERIES RATING IS ACCEPTABLE.
- PROVIDE RIVETTED LAMACOID ON FRONT OF PARK MAIN DISCONNECT TO READ "USE ONLY TYPE J CURRENT LIMITING FUSES 200A RATED".



BID OPPORTUNITY No. 78-2024

NOTES:



REV	YY / MM / DD	DESCRIPTION	BY
0	24 / 02 / 09	ISSUED FOR TENDER	PL

A. SECTION LETTER OR DETAIL NUMBER.
B. DRAWING WHERE SECTION OR DETAIL IS DRAWN.
OR
DRAWING WHERE SECTION OR DETAIL IS INDICATED
--- SECTION OR DETAIL SHOWN ON SAME DRAWING.

A B A B

PROFESSIONAL'S SEAL
PROVINCE OF MANITOBA
P
LAPORTE
Licence No. 41812
2024-02-19
REGISTERED ENGINEERING LICENSEE

SCATLIFF + MILLER + MURRAY
visionary urban design + landscapes

CONSULTANT FILE NAME AIR CANADA PARK REDEVELOPMENT

CLIENT **CITY OF WINNIPEG**
PLANNING, PROPERTY & DEVELOPMENT



AIR CANADA WINDOW PARK REDEVELOPMENT

CITY DRAWING NUMBER SHEET OF
23 28

ELECTRICAL
SINGLE LINE DIAGRAMS AND PANELBOARD SCHEDULES

DESIGN	DRAWN	DATE - Y / M / D	SCALE
PL	RD	24/02/09	AS SHOWN
CHECKED	APPROVED	PROJECT No.	DRAWING No.
DAL	PL	23-0109-004	E4.0