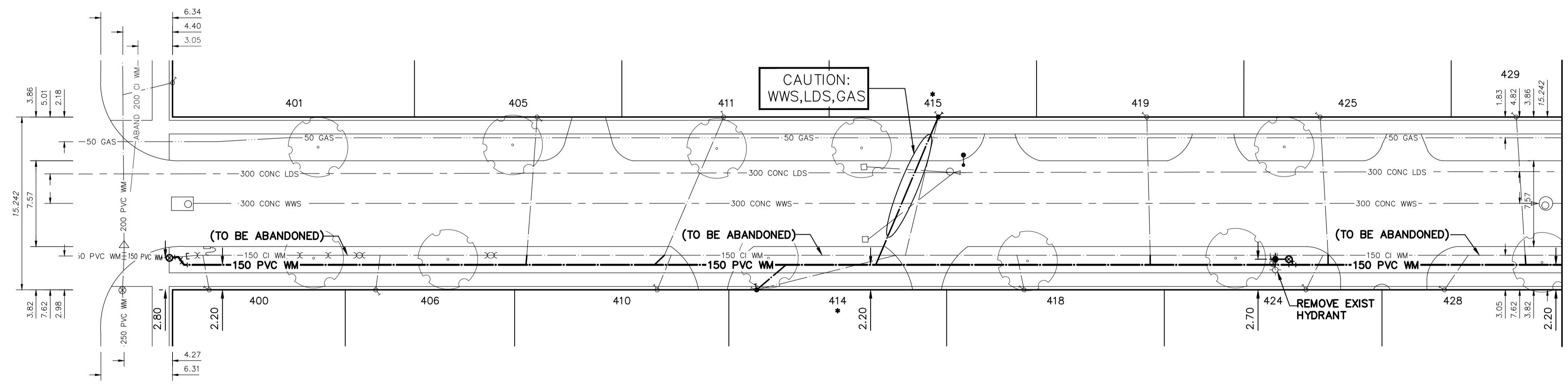
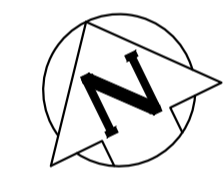


WATER SERVICE INFORMATION					
ADDRESS	SIZE (mm) MATERIAL (STREET)	SIZE (mm) MATERIAL (PROP.)	SHORT & LONG MEASUREMENT	CORP LOCATION	REMARKS
400 LEIGHTON AVE RESIDENTIAL	20 CU	20 CU	0.50 WWL BLDG 3.240 EWL ROCH ST	0.5 W OF S/C	OUTSIDE RENEWAL LIMITS
401 LEIGHTON AVE RESIDENTIAL	20 CU	20 CU	3.98 SSL BLDG 3.030>NNL LEIGHTON AVE	1.0 S OF S/C	RECONNECT SERVICE
405 LEIGHTON AVE RESIDENTIAL	20 CU	20 CU	2.30 WEL BLDG 32.140 EWL ROCH ST	0.9 W OF S/C	RECONNECT SERVICE
406 LEIGHTON AVE RESIDENTIAL	20 CU	20 CU	2.48 WWL BLDG 17.920 EWL ROCH ST	0.4 E OF S/C	RECONNECT SERVICE
410 LEIGHTON AVE RESIDENTIAL	20 CU	20 CU	2.17 WEL BLDG 42.740 EWL ROCH ST	1.2 E OF S/C	RECONNECT SERVICE
411 LEIGHTON AVE RESIDENTIAL	20 CU	20 CU	2.61 WEL BLDG 48.590 EWL ROCH ST	5.2 W OF S/C	RECONNECT SERVICE
414 LEIGHTON AVE RESIDENTIAL	20 CU	20 CU	1.65 EWL BLDG 51.510 EWL ROCH ST	12.3 E OF S/C	RENEW TO R W/20 CU
415 LEIGHTON AVE RESIDENTIAL	20 CU	20 CU	8.08 EWL BLDG 67.500 EWL ROCH ST	2.9 W OF S/C	RENEW TO R W/20 CU
418 LEIGHTON AVE RESIDENTIAL	20 CU	20 CU	2.65 EWL BLDG 75.090 EWL ROCH ST	0.6 W OF S/C	RECONNECT SERVICE
419 LEIGHTON AVE RESIDENTIAL	20 CU	20 CU	3.35 WEL BLDG 85.890 EWL ROCH ST	0.3 E OF S/C	RECONNECT SERVICE
424 LEIGHTON AVE RESIDENTIAL	20 CU	20 CU	2.67 WEL BLDG 99.940 EWL ROCH ST	1.5 E OF S/C	RECONNECT SERVICE
425 LEIGHTON AVE RESIDENTIAL	20 CU	20 CU	5.10 WEL BLDG 101.180 EWL ROCH ST	0.7 E OF S/C	RECONNECT SERVICE
428 LEIGHTON AVE RESIDENTIAL	20 CU	20 CU	1.74 EWL BLDG 112.150 EWL ROCH ST	2.1 E OF S/C	RECONNECT SERVICE
429 LEIGHTON AVE RESIDENTIAL	20 CU	20 CU	5.77 WEL BLDG 118.470 EWL ROCH ST	0.8 E OF S/C	RECONNECT SERVICE

\* SERVICES TO BE RENEWED TO R. ALL OTHERS TO BE RECONNECTED

NOTE: CHAINAGES SHOWN ARE ALONG S. R. OF LEIGHTON AVENUE

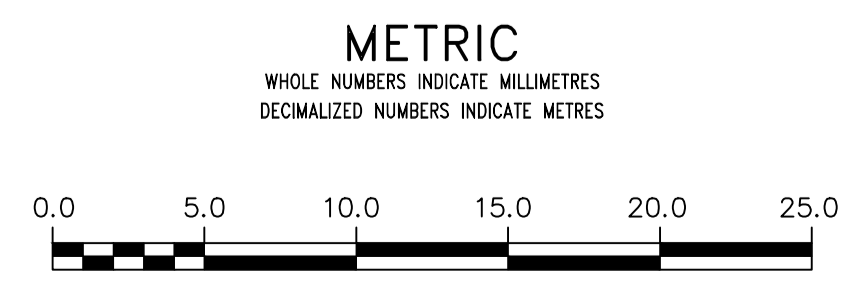
LEIGHTON AVENUE



MATCHLINE 2+22.50  
SEE DWG D-16495

FOR INDEX SEE D-16489

NOTE: ALL VALVES TO BE INSTALLED COUNTERCLOCKWISE TO CLOSE



**WARNING**  
IF POWER EQUIPMENT OR EXPLOSIVES ARE TO BE USED FOR EXCAVATION ON THIS PROJECT THE CONTRACTOR MUST:  
1) NOTIFY THE GAS COMPANY OF THE PROPOSED LOCATION OF EXCAVATION.  
2) TAKE PRECAUTION TO AVOID DAMAGE TO GAS COMPANY INSTALLATIONS.  
SEE PROVINCIAL REGULATION 210/72 FOR DETAILS

**LOCATION APPROVED**  
UNDERGROUND STRUCTURES  
SUPV. U/G STRUCTURES COMMITTEE DATE  
NOTE:  
LOCATION OF UNDERGROUND STRUCTURES AS SHOWN ARE BASED ON THE BEST INFORMATION AVAILABLE BUT NO GUARANTEE IS GIVEN THAT ALL EXISTING UTILITIES ARE SHOWN OR THAT THE GIVEN LOCATIONS ARE EXACT. CONFIRMATION OF EXISTENCE AND EXACT LOCATION OF ALL SERVICES MUST BE OBTAINED FROM THE INDIVIDUAL UTILITIES BEFORE PROCEEDING WITH CONSTRUCTION.

VERTICAL DATUM: CGVD28 (HT2.0 Geoid)			
HORIZONTAL DATUM: NAD83 (June 1990), Zone 14			
NO.	REVISIONS	DATE	BY

DESIGNED BY	JB	CHECKED BY	SC
DRAWN BY	AJ	APPROVED BY	SC
SCALE:	HORIZONTAL 1:250 VERTICAL 1:50		
DATE	2024 02 06	RELEASED FOR CONSTRUCTION	DATE
PLOT DATE: 2024 02 06		DATE	

ENGINEER'S SEAL  
PROVINCE OF MANITOBA  
S.R.J. COUNROYER  
Member 22699  
2024-02-06  
REGISTERED PROFESSIONAL ENGINEER  
Digitally signed by Stacy Cournoyer, P. Eng  
CONSULTANT DRAWING NUMBER

**THE CITY OF WINNIPEG**  
WATER AND WASTE DEPARTMENT  
ENGINEERING DIVISION  
2024 WATER MAIN RENEWALS  
CONTRACT 1  
LEIGHTON AVENUE  
ROCH STREET TO  
122.5 E OF ROCH STREET  
SHEET 5 OF 10  
CITY DRAWING NUMBER  
D-16492