

**NOTES:**

- REFER TO SPECIFICATION E13, CONSTRUCTION OF VARIOUS CURB TYPES FOR ASPHALT PAVEMENT OF THE TENDER DOCUMENT
- TRANSVERSE JOINT SAW CUT EVERY 3.0m TO A MAXIMUM DEPTH OF 25mm

**CONSTRUCTION NOTES**

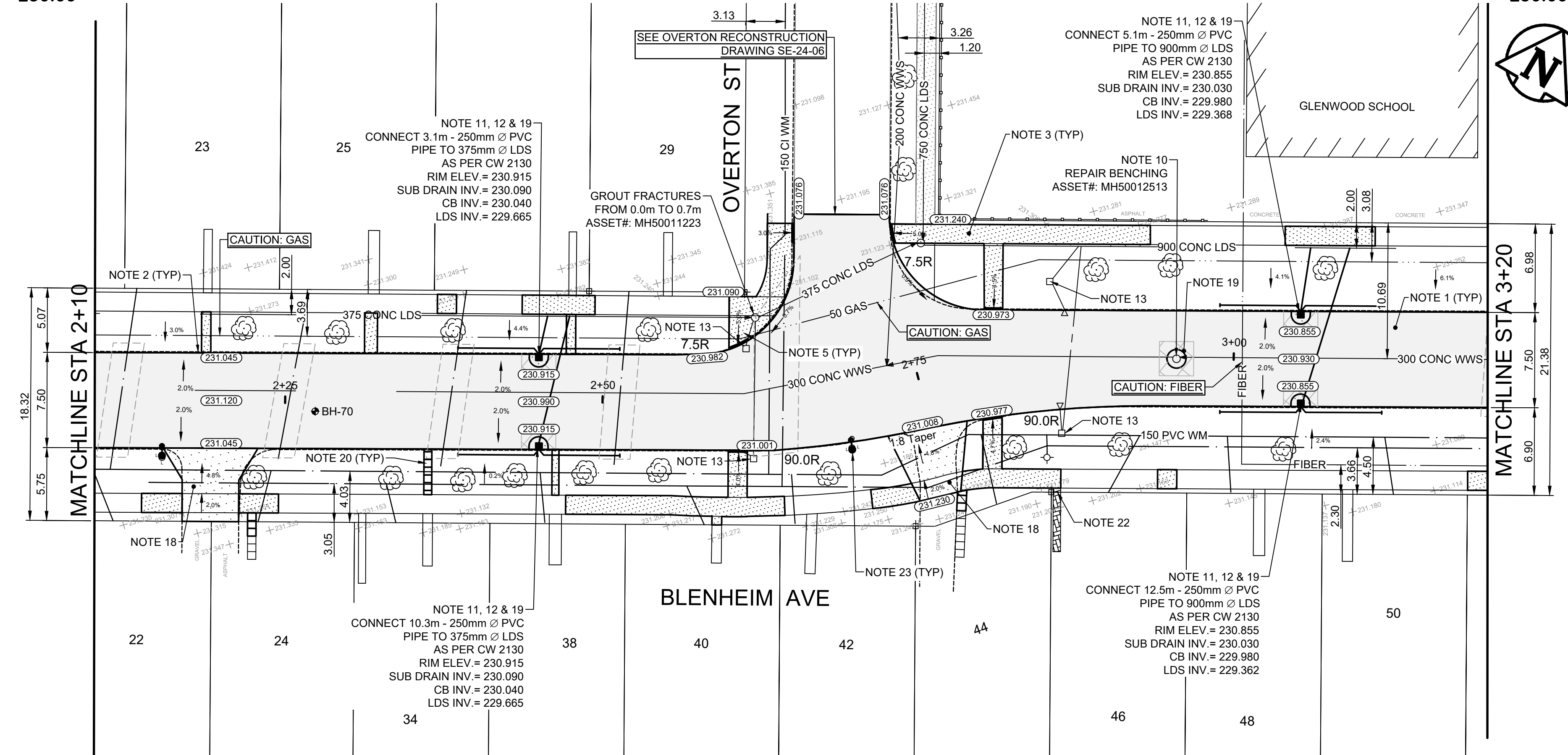
- REMOVE EXISTING PAVEMENT AND CONSTRUCT NEW 125mm ASPHALT PAVEMENT AS PER TYPICAL CROSS SECTION
- CONSTRUCT NEW CONCRETE CURB FOR ASPHALT PAVEMENT (SD-200A, E13)
- RENEW EXISTING CONCRETE SIDEWALK (SD-228A)
- INSTALL NEW DETECTABLE WARNING SURFACE TILE (SD-229E)
- CONSTRUCT CURB RAMP (SD-200A, SD-229C, SD-229D)
- RE-GRADE EXISTING PRECAST SIDEWALK BLOCKS
- RE-GRADE EXISTING PAVING STONES
- REMOVE EXISTING CATCH BASIN
- LIMIT OF RECONSTRUCTION
- INSTALL NEW FRAME AND SOLID COVER (AP-006, AP-007) AND ADJUST TO GRADE
- INSTALL NEW 1200 CATCH BASIN WITH CURB AND GUTTER INLET FRAME (SD-024), AND CONNECT TO SEWER WITH 250mm Ø PVC PIPE AS PER CW 2130
- INSTALL 6.0m - 150mm Ø SUB DRAINS (BOTH SIDES), CONNECT TO CATCH BASIN (SD-245) AND CAP ENDS AS PER CW 3120
- ABANDON EXISTING CATCH BASIN & DRAINAGE INLET AS PER CW2130
- CONSTRUCT NEW ASPHALT OVERLAY 80mm (TYP)
- CONSTRUCT NEW CONCRETE LIP CURB FOR ASPHALT PAVEMENT (SD-200A)
- REMOVE AND REPLACE ASPHALT
- REMOVE EXISTING PAVEMENT AND CONSTRUCT 150mm REINFORCED CONCRETE PAVEMENT WITH MODIFIED BARRIER CURB
- REMOVE EXISTING APPROACH AND CONSTRUCT NEW 150mm REINFORCED CONCRETE APPROACH WITH LIP CURB FOR ASPHALT PAVEMENT (SD-200A, SD-235, SD-237)
- CONSTRUCT MIN. 150mm CONCRETE ISOLATION AND INSTALL TYPE B PAVEMENT REPAIR FABRIC (SD-220D)
- INSTALL NEW PRECAST SIDEWALK BLOCKS
- INSTALL NEW SPEED HUMP AS PER TYPICAL SPEED HUMP DETAIL (SEE DRAWING SE-24-100)
- RE-GRADE EXISTING PAVING STONES
- LIGHT STANDARD TO BE INSTALLED IN ACCORDANCE WITH SPECIFICATION E18 OF THE TENDER DOCUMENT

**GENERAL NOTES**

- PAVEMENT DIMENSIONS ARE TO BACK OF CURB
- ALL CURB RADII UNDER 15.0m SHALL BE MODIFIED (SD-203B)
- CURB REPLACEMENT AS DIRECTED BY CONTRACT ADMINISTRATOR
- CONTRACTOR TO CONFIRM THE LOCATION OF ALL UTILITIES/SERVICES IN THE FIELD PRIOR TO CONSTRUCTION
- ADJUST ALL EXISTING WATER VALVES AND CURB STOPS TO GRADE
- PAVEMENT REPAIRS SHOWN ARE A REPRESENTATIVE SAMPLE OF THE TENDER QUANTITIES
- ALL WATER SERVICES WITHIN THE LIMITS OF THE RECONSTRUCTION SHALL BE INSULATED AS PER SD-018

**ISSUED FOR TENDER**  
NOT TO BE USED FOR CONSTRUCTION

**METRIC**  
WHOLE NUMBERS INDICATE MILLIMETERS  
DECIMALIZED NUMBERS INDICATE METERS  
TENDER NO. 4-2024



EXISTING	LEGEND - PLAN	PROPOSED	EXISTING	LEGEND - PLAN	PROPOSED	EXISTING	LEGEND - PROFILE	PROPOSED
⊕	HYDRANT	⊕	---	LDS/WWS	---	▭	CONCRETE	▭
⊗	VALVE	⊗	---	WATERMAIN	---	▨	CONCRETE SIDEWALK	▨
⊙	CURB STOP	⊙	---	GAS	---	▩	ASPHALT	▩
⊚	MANHOLE	⊚	---	TRAFFIC SIGNALS	---	▧	PAVEMENT REPAIR FABRIC	▧
⊛	CATCH BASIN	⊛	---	HYDRO/STREET LIGHT	---	▦	WATER SERVICE INSULATION	▦
⊜	CURB INLET	⊜	---	MTS/SHAW	---	▥	PAVING STONES	▥
⊝	HYDRO POLE	⊝	---	CURB RENEWAL	---	▤	NORTH GUTTER	▤
⊞	LIGHT STANDARD	⊞	---	PROPERTY LINE	---	▣	CENTER LINE	▣
⊟	TEST HOLE	⊟	---	RAMP CURB	---	▢	SOUTH GUTTER	▢
⊠	SURVEY BAR	⊠	---	ELEVATIONS	(31.000)	□	NORTH SIDEWALK	□
⊡	GEODETIC BENCH MARK	⊡	---	TREE	---	■	SOUTH SIDEWALK	■

LOCATION APPROVED	DATE
IB @ NW CORNER - BLENHEIM AVE & DES MEURONS ST	ELEV. 230.823
DATE	

NO.	REVISIONS	DATE	BY
3.	ISSUED FOR TENDER	240318	T.K.
2.	SUBMIT FOR ENGINEERS REVIEW	240206	T.K.
1.	SUBMIT FOR PLAN APPROVAL	240202	T.K.

**ENGINEERING DIVISION**  
TECHNOLOGY SERVICES BRANCH  
106 - 1155 PACIFIC AVE

DESIGNED BY: T.K. CHECKED BY: G.K., R.W.  
DRAWN BY: T.K. APPROVED BY: M.L.

HOR. SCALE: 1 : 250  
VERTICAL: 1 : 10  
DATE: 2024/03/13

**THE CITY OF WINNIPEG**  
PUBLIC WORKS DEPARTMENT

**BLENHEIM AVENUE**  
FROM ST ANNE'S RD TO DES MEURONS ST  
ASPHALT RECONSTRUCTION AND ASSOCIATED WORKS  
FROM STA. 2+10 TO STA. 3+20

CITY DRAWING NUMBER: SE-24-14  
SHEET 14 OF 17  
2