

**NOTES:**

- REFER TO SPECIFICATION E13. CONSTRUCTION OF VARIOUS CURB TYPES FOR ASPHALT PAVEMENT OF THE TENDER DOCUMENT
- TRANSVERSE JOINT SAW CUT EVERY 3.0m TO A MAXIMUM DEPTH OF 25mm

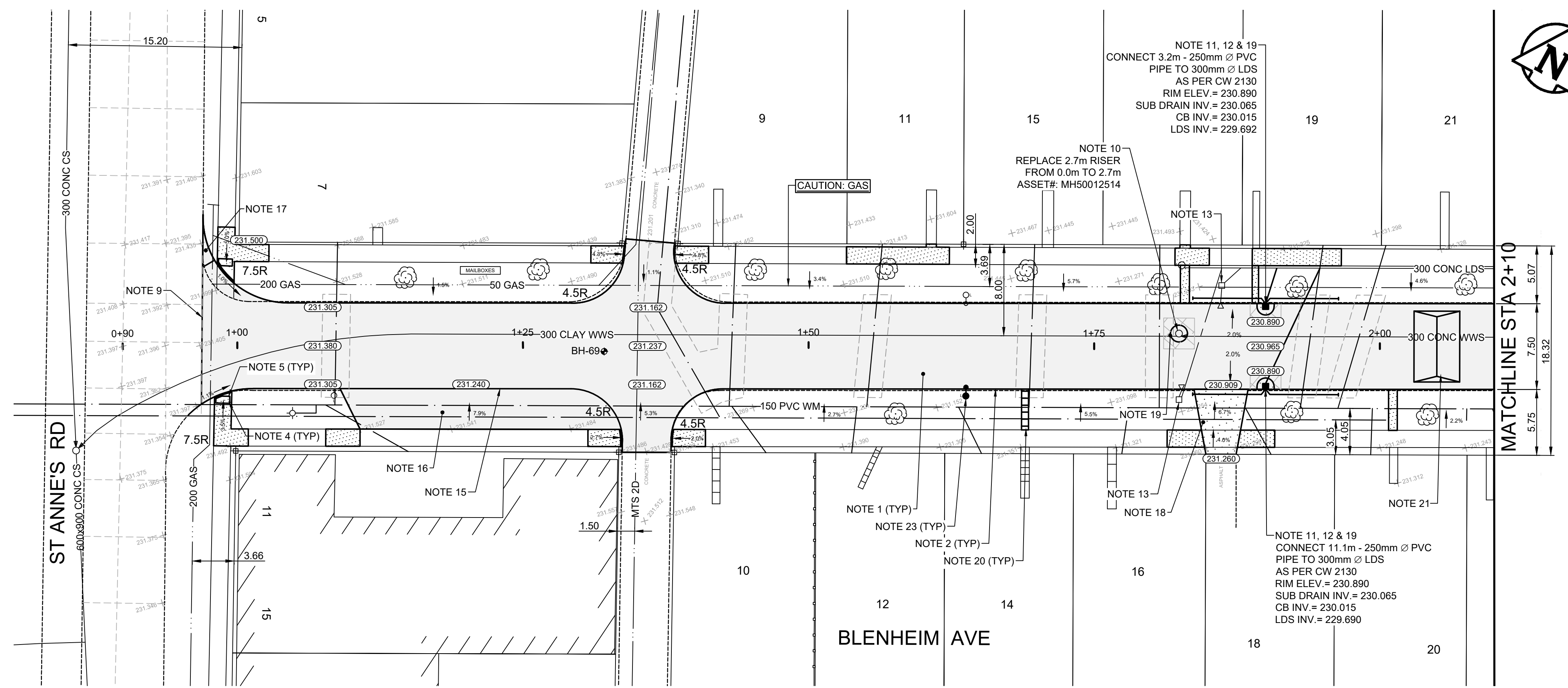
- CONSTRUCTION NOTES**
- REMOVE EXISTING PAVEMENT AND CONSTRUCT NEW 125mm ASPHALT PAVEMENT AS PER TYPICAL CROSS SECTION
  - CONSTRUCT NEW CONCRETE CURB FOR ASPHALT PAVEMENT (SD-200A, E13)
  - RENEW EXISTING CONCRETE SIDEWALK (SD-228A)
  - INSTALL NEW DETECTABLE WARNING SURFACE TILE (SD-229E)
  - CONSTRUCT CURB RAMP (SD-200A, SD-229C, SD-229D)
  - RE-GRADE EXISTING PRECAST SIDEWALK BLOCKS
  - RE-GRADE EXISTING PAVING STONES
  - REMOVE EXISTING CATCH BASIN
  - LIMIT OF RECONSTRUCTION
  - INSTALL NEW FRAME AND SOLID COVER (AP-006, AP-007) AND ADJUST TO GRADE
  - INSTALL NEW 1200mm CATCH BASIN WITH CURB AND GUTTER INLET FRAME (SD-024), AND CONNECT TO SEWER WITH 250mm Ø PVC PIPE AS PER CW 2130
  - INSTALL 6.0m - 150mm Ø SUB DRAINS (BOTH SIDES), CONNECT TO CATCH BASIN (SD-246) AND CAP ENDS AS PER CW 3120
  - ABANDON EXISTING CATCH BASIN & DRAINAGE INLET AS PER CW2130
  - CONSTRUCT NEW ASPHALT OVERLAY 80mm (TYP)
  - CONSTRUCT NEW CONCRETE LIP CURB FOR ASPHALT PAVEMENT (SD-200A)
  - REMOVE AND REPLACE ASPHALT
  - REMOVE EXISTING PAVEMENT AND CONSTRUCT 150mm REINFORCED CONCRETE PAVEMENT WITH MODIFIED BARRIER CURB
  - REMOVE EXISTING APPROACH AND CONSTRUCT NEW 150mm REINFORCED CONCRETE APPROACH WITH LIP CURB FOR ASPHALT PAVEMENT (SD-200A, SD-235, SD-237)
  - CONSTRUCT MIN. 150mm CONCRETE ISOLATION AND INSTALL TYPE B PAVEMENT REPAIR FABRIC (SD-220D)
  - INSTALL NEW PRECAST SIDEWALK BLOCKS
  - INSTALL NEW SPEED HUMP AS PER TYPICAL SPEED HUMP DETAIL (SEE DRAWING SE-24-100)
  - RE-GRADE EXISTING PAVING STONES
  - LIGHT STANDARD TO BE INSTALLED IN ACCORDANCE WITH SPECIFICATION E18 OF THE TENDER DOCUMENT

- GENERAL NOTES**
- PAVEMENT DIMENSIONS ARE TO BACK OF CURB
  - ALL CURB RADII UNDER 15.0m SHALL BE MODIFIED (SD-203B)
  - CURB REPLACEMENT AS DIRECTED BY CONTRACT ADMINISTRATOR
  - CONTRACTOR TO CONFIRM THE LOCATION OF ALL UTILITIES/SERVICES IN THE FIELD PRIOR TO CONSTRUCTION
  - ADJUST ALL EXISTING WATER VALVES AND CURB STOPS TO GRADE
  - PAVEMENT REPAIRS SHOWN ARE A REPRESENTATIVE SAMPLE OF THE TENDER QUANTITIES
  - ALL WATER SERVICES WITHIN THE LIMITS OF THE RECONSTRUCTION SHALL BE INSULATED AS PER SD-018

**ISSUED FOR TENDER**  
NOT TO BE USED FOR CONSTRUCTION

**METRIC**  
WHOLE NUMBERS INDICATE MILLIMETERS  
DECIMALIZED NUMBERS INDICATE METERS

TENDER NO. 4-2024



EXISTING	LEGEND - PLAN	PROPOSED	EXISTING	LEGEND - PLAN	PROPOSED	EXISTING	LEGEND - PROFILE	PROPOSED
⊕	HYDRANT	⊕	---	LDS/WWS	---	▒	CONCRETE	▒
⊕	VALVE	⊕	---	WATERMAIN	---	▒	CONCRETE SIDEWALK	▒
⊕	CURB STOP	⊕	---	GAS	---	▒	ASPHALT	▒
⊕	MANHOLE	⊕	---	TRAFFIC SIGNALS	---	▒	PAVEMENT REPAIR FABRIC	▒
⊕	CATCH BASIN	⊕	---	HYDRO/STREET LIGHT	---	▒	WATER SERVICE INSULATION	▒
⊕	CURB INLET	⊕	---	MTS/SHAW	---	▒	PAVING STONES	▒
⊕	HYDRO POLE	⊕	---	CURB RENEWAL	---	▒	NORTH GUTTER	▒
⊕	LIGHT STANDARD	⊕	---	PROPERTY LINE	---	▒	CENTER LINE	▒
⊕	TEST HOLE	⊕	---	RAMP CURB	---	▒	SOUTH GUTTER	▒
⊕	SURVEY BAR	⊕	---	ELEVATIONS	---	▒	NORTH SIDEWALK	▒
⊕	GEODETIC BENCH MARK	⊕	---	TREE	---	▒	SOUTH SIDEWALK	▒

**LOCATION APPROVED UNDERGROUND STRUCTURES**

SUPR. U/G STRUCTURES COMMITTEE DATE

**NOTE:**  
LOCATION OF UNDERGROUND STRUCTURES AS SHOWN ARE BASED ON THE BEST INFORMATION AVAILABLE. BUT NO GUARANTEE IS GIVEN THAT ALL EXISTING UTILITIES ARE SHOWN OR THAT THE GIVEN LOCATIONS ARE EXACT. CONFIRMATION OF EXISTENCE AND EXACT LOCATION OF ALL SERVICES MUST BE OBTAINED FROM THE INDIVIDUAL UTILITIES BEFORE PROCEEDING WITH CONSTRUCTION.

NO.	REVISIONS	DATE	BY
3.	ISSUED FOR TENDER	24/03/18	T.K.
2.	SUBMIT FOR ENGINEERS REVIEW	24/02/06	T.K.
1.	SUBMIT FOR PLAN APPROVAL	24/02/02	T.K.

B.M. 1B @ NW CORNER - BLENHEIM AVE & DES MEURONS ST  
ELEV. 230.823

**ENGINEERING DIVISION  
TECHNOLOGY SERVICES BRANCH  
106 - 1155 PACIFIC AVE**

DESIGNED BY T.K.  
CHECKED BY G.K., R.W.  
DRAWN BY T.K.  
APPROVED BY M.L.

HOR. SCALE: 1 : 250  
VERTICAL: 1 : 10  
DATE: 2024/03/13

**THE CITY OF WINNIPEG**  
PUBLIC WORKS DEPARTMENT

**BLENHEIM AVENUE**  
FROM ST ANNE'S RD TO DES MEURONS ST  
ASPHALT RECONSTRUCTION AND ASSOCIATED WORKS  
FROM STA. 1+00 TO STA. 2+10

CITY DRAWING NUMBER SE-24-13  
SHEET 13 OF 17  
1