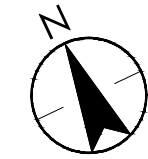
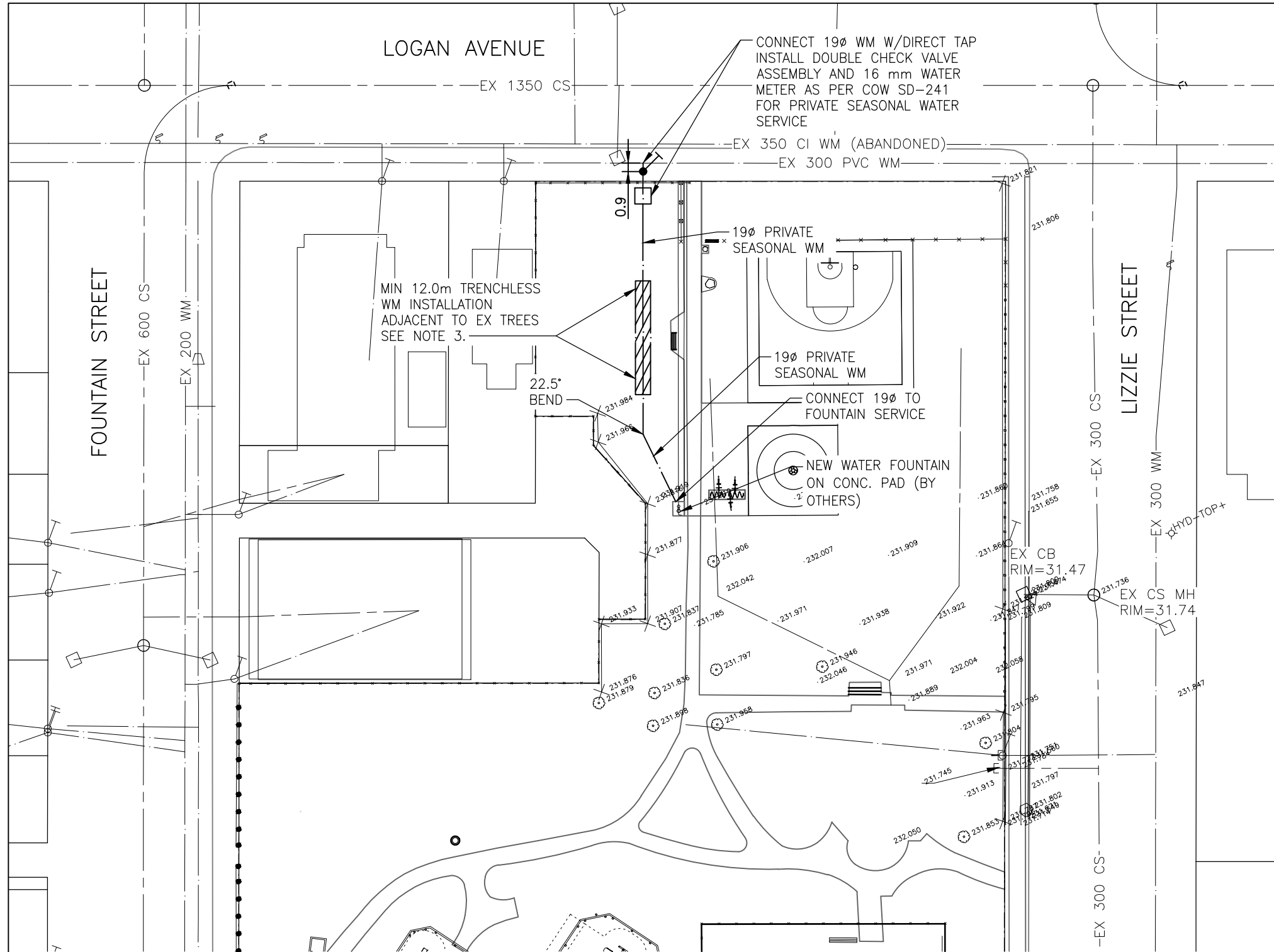


V:\112\active\11220782\0300\_drawing\0302\_sheet\_files\02\_civil\20782c-101.dwg C-101  
2024/02/29 3:42 PM By: Klippenstein, Nathan



EXISTING	LEGEND - PLAN	PROPOSED
150 WM	WATERMAIN	150 WM
⊕	HYDRANT	⊕
⊗	VALVE	⊗
250 CS	COMBINED SEWER	250 CS
○	MAINTENANCE HOLE	
□	CATCH BASIN	■
▽	CURB INLET	▼
---	POWER	
---	SIDEWALK	

  
**ENGINEERS  
GEOSCIENTISTS  
MANITOBA**  
 Certificate of Authorization  
 Stantec Consulting Ltd.  
 No. 1301

### WARNING

IF POWER EQUIPMENT OR EXPLOSIVES ARE TO BE USED FOR EXCAVATION ON THIS PROJECT THE CONTRACTOR MUST:

- 1) NOTIFY THE GAS COMPANY OF THE PROPOSED LOCATION OF EXCAVATION.
- 2) TAKE PRECAUTION TO AVOID DAMAGE TO GAS COMPANY INSTALLATIONS.

SEE PROVINCIAL REGULATION 140/92 FOR DETAILS

### METRIC

WHOLE NUMBERS INDICATE MILLIMETRES  
DECIMALIZED NUMBERS INDICATE METRES

2024-02-28  
111220782



ORIGINAL SHEET - ISO 11x17 - v17.05

  
**Stantec**  
 Stantec Consulting Ltd.  
 Suite 500, 311 Portage Avenue  
 Winnipeg MB Canada R3B 2B9  
 Tel. 204.489.5900 Fax. 204.453.9012  
 www.stantec.com

#### Notes

1. CONTRACTOR TO VERIFY LOCATION, INVERTS AND TYPE OF ALL EXISTING BURIED UTILITIES PRIOR TO CONSTRUCTION AND NOTIFY ENGINEER OF ANY DISCREPANCIES.
2. ALL MATERIALS AND CONSTRUCTION SHALL BE IN ACCORDANCE WITH THE LATEST EDITION OF THE CITY OF WINNIPEG STANDARD CONSTRUCTION SPECIFICATION.
3. ALL WATER SERVICES TO HAVE A MINIMUM OF 2.5m COVER AND TO BE INSTALLED USING TRENCHLESS METHODS WHERE POSSIBLE.
4. ALL TRENCH BACKFILL FOR WATER, SEWER AND PVC CONDUIT INSTALLATIONS SHALL BE CLASS B SAND BEDDING WITH CLASS 2 BACKFILL WHEN WITHIN 1.0m OR UNDER NEW OR PROPOSED PAVEMENT AREAS AND CLASS 4 BACKFILL IN LANDSCAPED AREAS.

Client/Project  
 CITY OF WINNIPEG - PARKS DEPARTMENT  
 GIIZHIGOOWEYAABIWE PARK  
 PARK REDEVELOPMENT  
 Figure No.  
 C-101  
 Title  
 DRINKING FOUNTAIN/BOTTLE FILL STATION  
 242 LIZZIE STREET - WINNIPEG MB