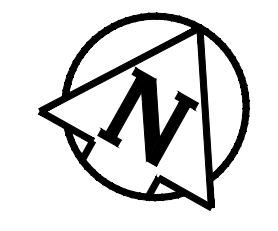
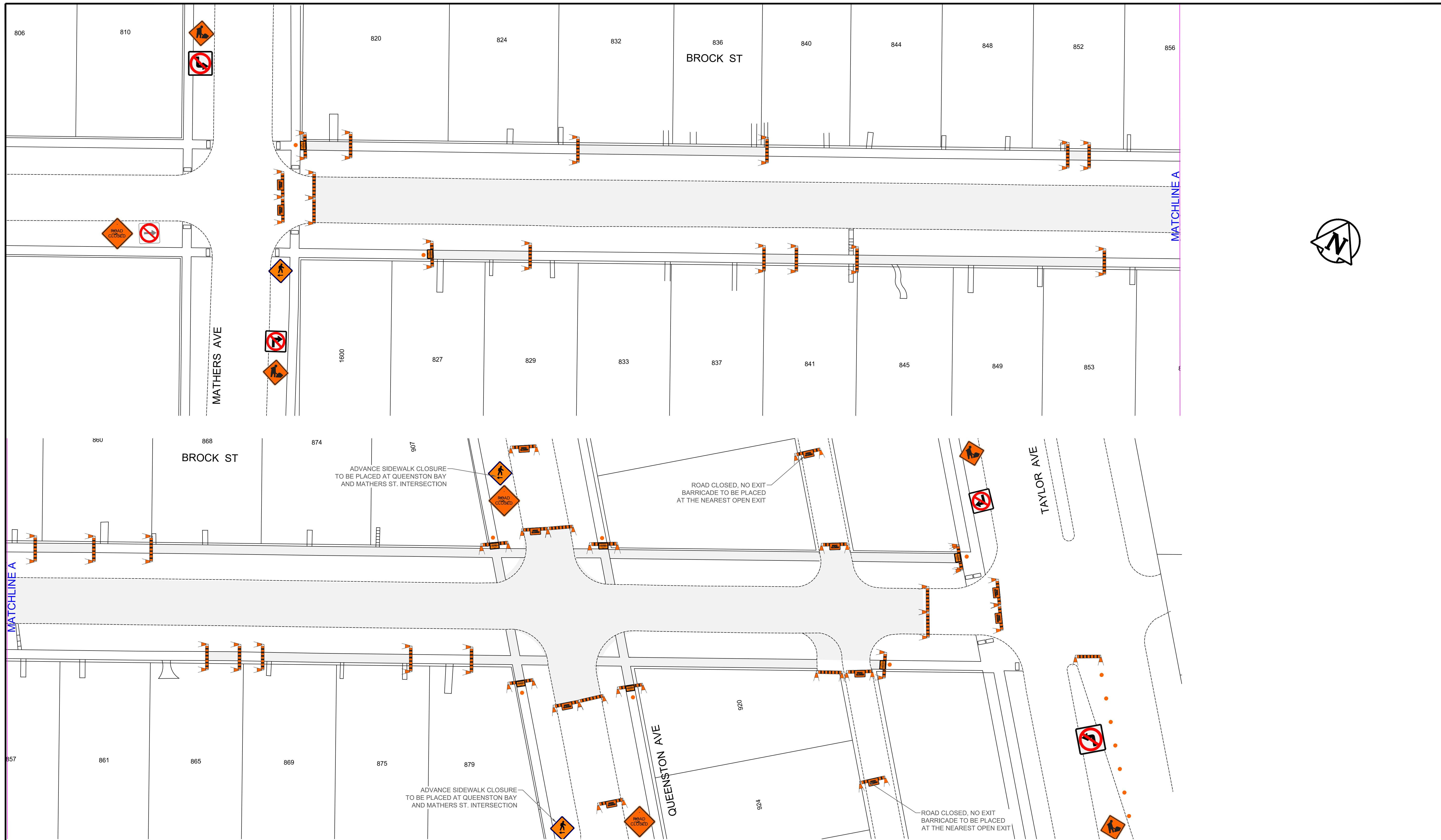







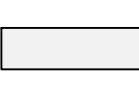



APPENDIX 'D' – TEMPORARY TRAFFIC CONTROL SIGNAGE DRAWINGS

TEMPORARY TRAFFIC CONTROL SIGNAGE DRAWINGS FOR:

Brock Street from Mathers Avenue to Taylor Avenue – Asphalt Pavement Reconstruction
Edderton Avenue from Beaumont Street to Derek Street – Asphalt Pavement Reconstruction
Edderton Bay from Beaumont Street to End – Asphalt Pavement Resurface
Queenston Bay – West Leg from Mathers Avenue to Brock Street – Concrete Pavement
Rehabilitation
Rosemount Avenue from Beaumont Street to Derek Street – Asphalt Pavement Reconstruction
Rosemount Avenue from Derek Street to Wynne Street – Asphalt Pavement Resurface
Rosemount Bay from Beaumont Street to End – Asphalt Pavement Resurface



TRAFFIC SIGNAGE & STAGING

- TC-2 ROADWORK 
- RB-11 (L/R) TURN PROHIBITED 
- ROAD CLOSED / NO EXIT 
- BARRICADE 
- POLY POST 
- CONSTRUCTION AREA 
- C-46 SIDEWALK CLOSED 
- SIDEWALK CLOSED AHEAD, CROSS HERE 
- RB-10 NO STRAIGHT THROUGH 

- NOTES:**
1. ALL TRAFFIC SIGNAGE AND TEMPORARY TRAFFIC CONTROL TO CONFORM WITH THE LATEST REVISION OF THE CITY OF WINNIPEG MANUAL OF TEMPORARY TRAFFIC CONTROL ON CITY STREETS
 2. CONTRACTOR SHALL MAINTAIN SAFE PEDESTRIAN ACCESS AND CROSSINGS. WHERE SIDEWALKS ARE LOCATED ON BOTH SIDES OF THE STREET, CONTRACTOR MUST MAINTAIN PEDESTRIAN ACCESS ON ONE SIDE AT ALL TIMES. CONTRACTOR MUST SUBMIT A SITE ACCESSIBILITY PLAN.
 3. ALL TRAFFIC SIGNAGE ON THIS DRAWING IS A REPRESENTATIVE LOCATION. FOR PROPER SPACING, REFER TO MANUAL OF TEMPORARY TRAFFIC CONTROL ON CITY STREETS.
 4. PARKING TO BE REMOVED AT TIME OF CONSTRUCTION.
 5. RESIDENTIAL APPROACH ACCESS MUST BE MAINTAINED AT ALL TIMES

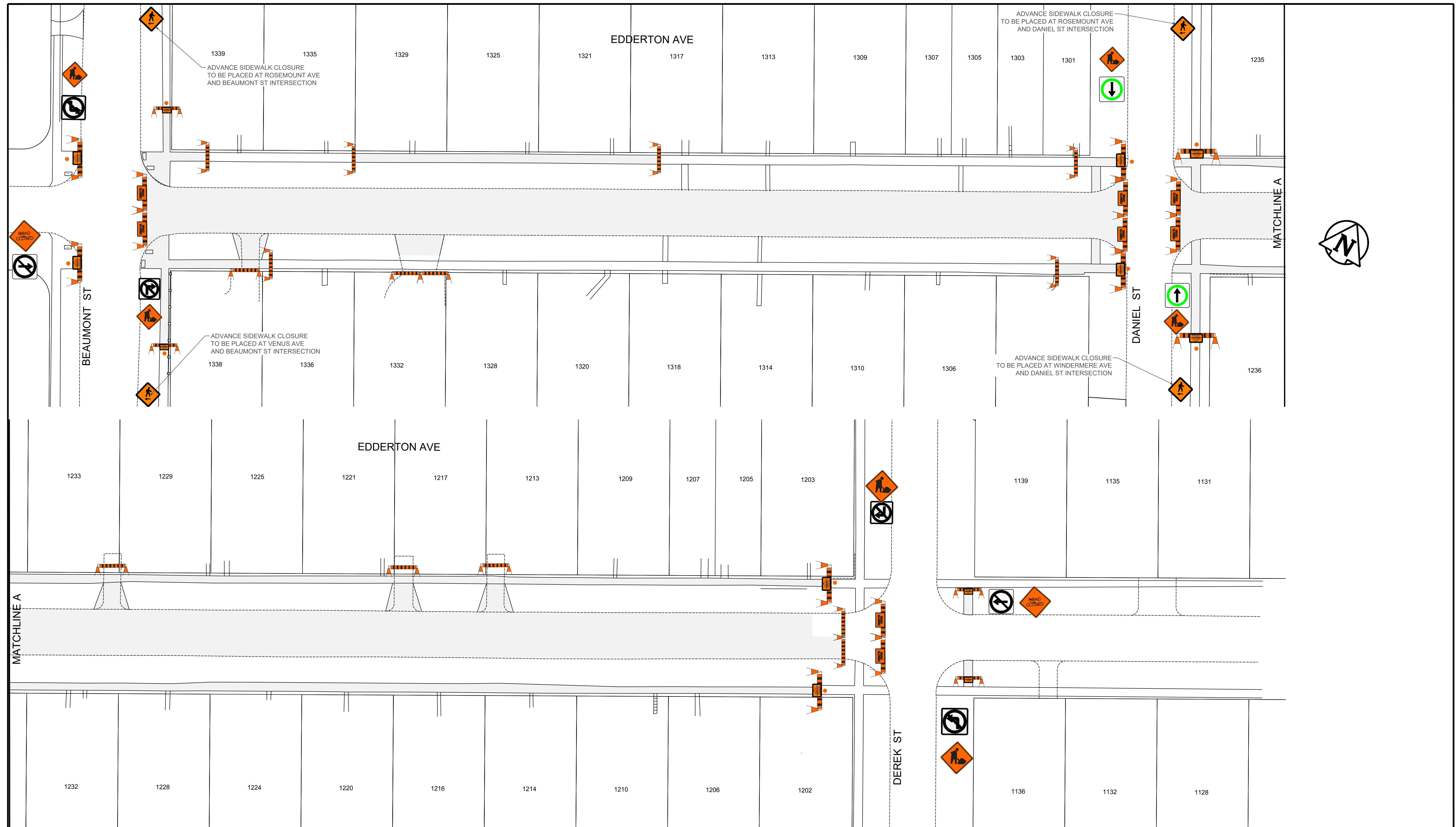
ENGINEERING DIVISION
TECHNOLOGY SERVICES BRANCH
106 - 1155 PACIFIC AVE

FOR INFORMATION ONLY TENDER NO. 18-2024

THE CITY OF WINNIPEG
PUBLIC WORKS DEPARTMENT

BROCK STREET
FROM MATHERS AVE TO TAYLOR AVENUE
TEMPORARY TRAFFIC SIGNAGE & STAGING

SHEET 1 OF 7



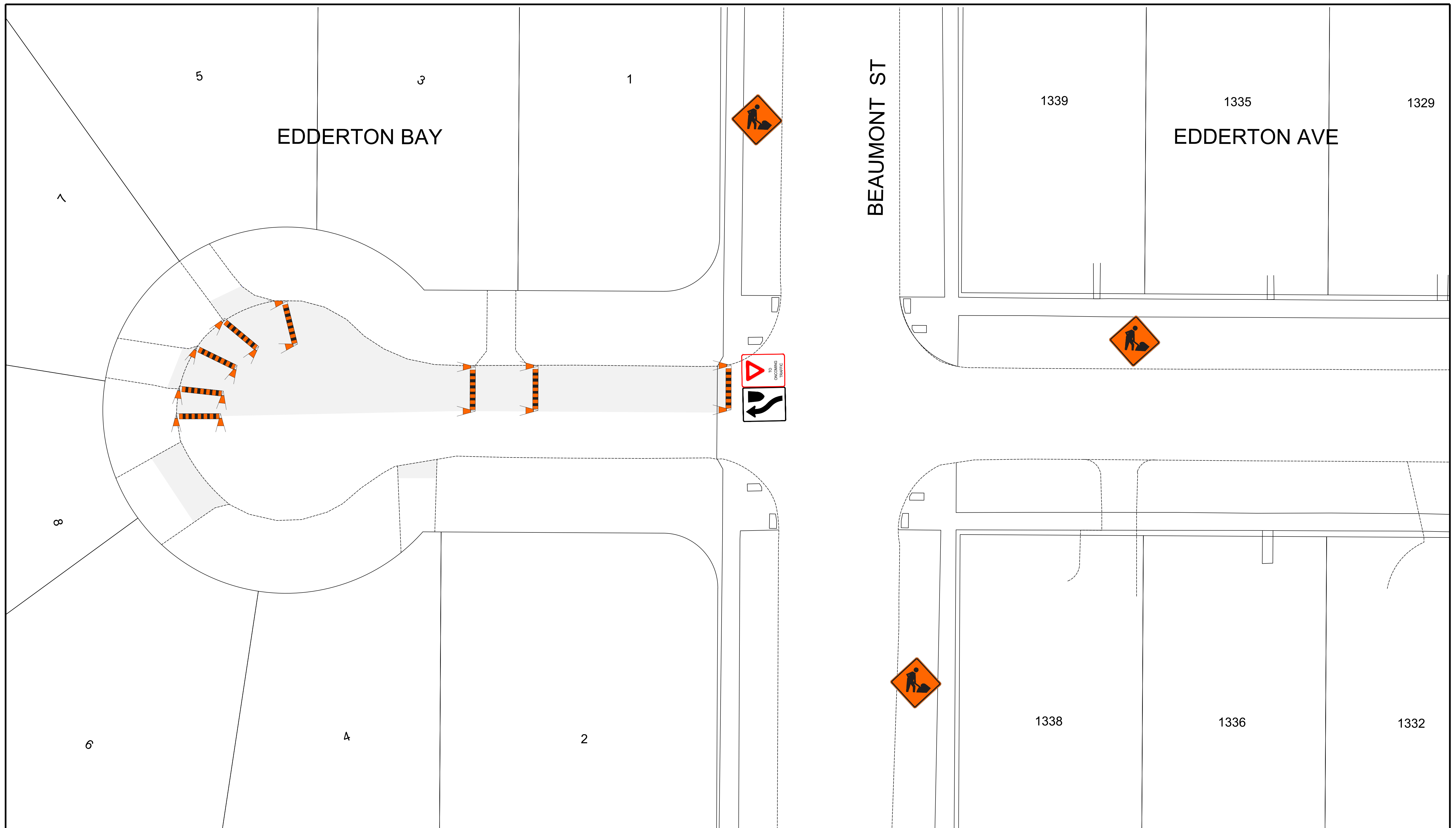
TRAFFIC SIGNAGE & STAGING

TC-2 ROADWORK		THROUGH TRAFFIC ONLY	
RB-11 (L/R) TURN PROHIBITED		CONSTRUCTION AREA	
ROAD CLOSED / NO EXIT		C-46 SIDEWALK CLOSED	
BARRICADE		RB-10 NO STRAIGHT THROUGH	
SIDEWALK CLOSED AHEAD, CROSS HERE		POLY POST	

- NOTES:**
1. ALL TRAFFIC SIGNAGE AND TEMPORARY TRAFFIC CONTROL TO CONFORM WITH THE LATEST REVISION OF THE CITY OF WINNIPEG MANUAL OF TEMPORARY TRAFFIC CONTROL ON CITY STREETS
 2. CONTRACTOR SHALL MAINTAIN SAFE PEDESTRIAN ACCESS AND CROSSINGS. WHERE SIDEWALKS ARE LOCATED ON BOTH SIDES OF THE STREET, CONTRACTOR MUST MAINTAIN PEDESTRIAN ACCESS ON ONE SIDE AT ALL TIMES. CONTRACTOR MUST SUBMIT A SITE ACCESSIBILITY PLAN.
 3. CONSTRUCTION IS TO BE COMPLETED LANE AT A TIME WITH TRAFFIC TO BE MAINTAINED IN BOTH DIRECTIONS. WHEN CONSTRUCTION IS COMPLETE IN THE FIRST LANE, TRAFFIC WILL BE MOVED TO THE COMPLETED LANE AND TRAFFIC CONTROL MIRRORRED.
 4. PARKING TO BE REMOVED AT TIME OF CONSTRUCTION.
 5. RESIDENTIAL APPROACH ACCESS MUST BE MAINTAINED AT ALL TIMES
 6. ALL TRAFFIC SIGNAGE ON THIS DRAWING IS IN A REPRESENTATIVE LOCATION. FOR PROPER SPACING, REFER TO MANUAL OF TEMPORARY TRAFFIC CONTROL ON CITY STREETS.

ENGINEERING DIVISION
TECHNOLOGY SERVICES BRANCH
106 - 1155 PACIFIC AVE

FOR INFORMATION ONLY		TENDER NO. 18-2024
THE CITY OF WINNIPEG PUBLIC WORKS DEPARTMENT		
EDDERTON AVENUE FROM BEAUMONT STREET TO DEREK STREET TEMPORARY TRAFFIC SIGNAGE & STAGING		SHEET 2 OF 7

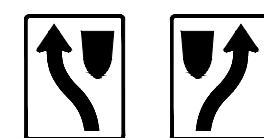


TRAFFIC SIGNAGE & STAGING

TC-2 ROADWORK



RB-25 (L/R) KEEP LEFT/RIGHT



BARRICADE



CONSTRUCTION AREA



TC-17 YIELD TO ONCOMING TRAFFIC



NOTES:

1. ALL TRAFFIC SIGNAGE AND TEMPORARY TRAFFIC CONTROL TO CONFORM WITH THE LATEST REVISION OF THE CITY OF WINNIPEG MANUAL OF TEMPORARY TRAFFIC CONTROL ON CITY STREETS
2. CONTRACTOR SHALL MAINTAIN SAFE PEDESTRIAN ACCESS AND CROSSINGS. WHERE SIDEWALKS ARE LOCATED ON BOTH SIDES OF THE STREET, CONTRACTOR MUST MAINTAIN PEDESTRIAN ACCESS ON ONE SIDE AT ALL TIMES. CONTRACTOR MUST SUBMIT A SITE ACCESSIBILITY PLAN.
3. CONSTRUCTION IS TO BE COMPLETED LANE AT A TIME WITH TRAFFIC TO BE MAINTAINED IN BOTH DIRECTIONS. WHEN CONSTRUCTION IS COMPLETE IN THE FIRST LANE, TRAFFIC WILL BE MOVED TO THE COMPLETED LANE AND TRAFFIC CONTROL MIRRORED.
4. PARKING TO BE REMOVED AT TIME OF CONSTRUCTION.
5. RESIDENTIAL APPROACH ACCESS MUST BE MAINTAINED AT ALL TIMES.
6. ALL TRAFFIC SIGNAGE ON THIS DRAWING IS A REPRESENTATIVE LOCATION FOR PROPER SPACING. REFER TO MANUAL OF TEMPORARY TRAFFIC CONTROL ON CITY STREETS.

FOR INFORMATION ONLY

TENDER NO. 18-2024

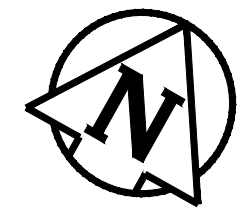
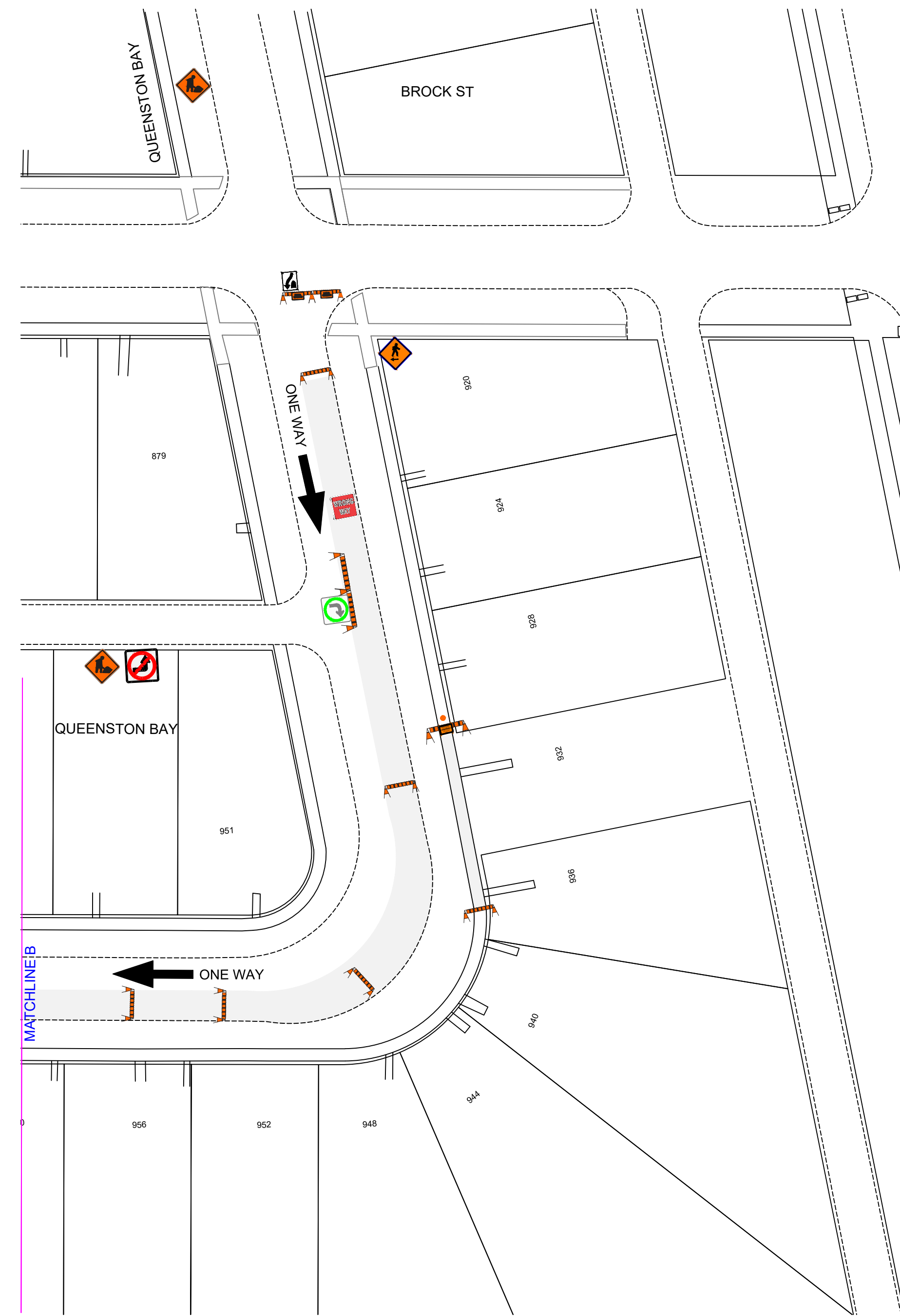
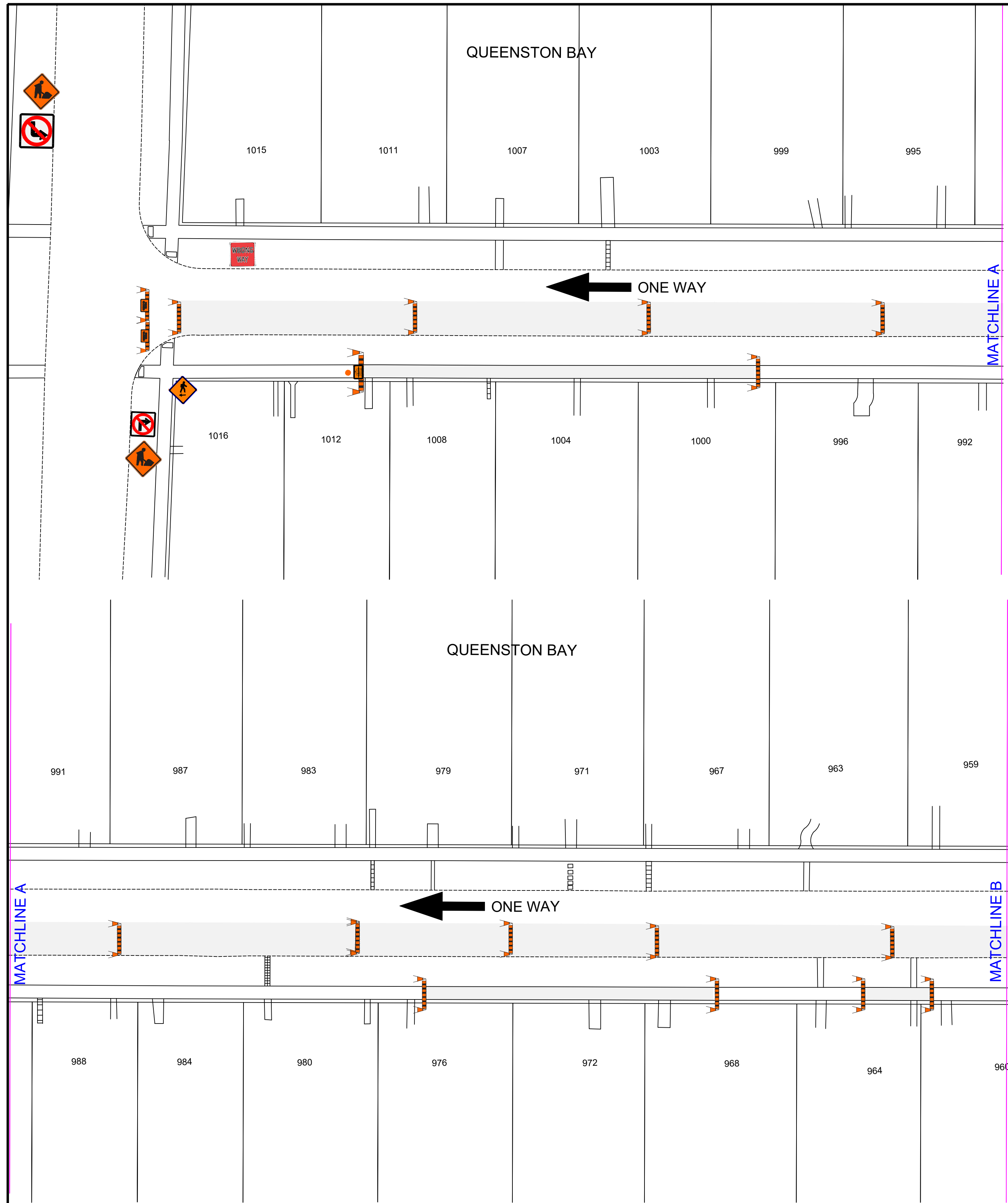


THE CITY OF WINNIPEG
PUBLIC WORKS DEPARTMENT

ENGINEERING DIVISION
TECHNOLOGY SERVICES BRANCH
106 - 1155 PACIFIC AVE

EDDERTON BAY
FROM BEAUMONT STREET TO END
TEMPORARY TRAFFIC SIGNAGE & STAGING

SHEET 3 OF 7



TRAFFIC SIGNAGE & STAGING

TC-2 ROADWORK



C-46 SIDEWALK CLOSED



WRONG WAY SIGN



RB-11 (L/R) TURN PROHIBITED



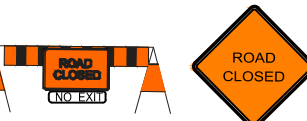
SIDEWALK CLOSED AHEAD, CROSS HERE



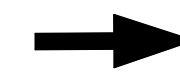
TURN LEFT/RIGHT



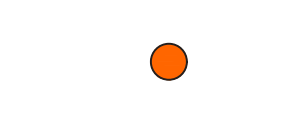
ROAD CLOSED / NO EXIT



DIRECTION OF TRAVEL



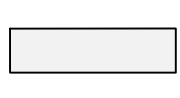
POLY POST



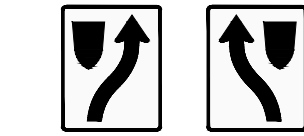
BARRICADE



CONSTRUCTION AREA



RB-25 (L/R) KEEP LEFT/RIGHT



NOTES:

1. ALL TRAFFIC SIGNAGE AND TEMPORARY TRAFFIC CONTROL TO CONFORM WITH THE LATEST REVISION OF THE CITY OF WINNIPEG MANUAL OF TEMPORARY TRAFFIC CONTROL ON CITY STREETS
2. CONTRACTOR SHALL MAINTAIN SAFE PEDESTRIAN ACCESS AND CROSSINGS. WHERE SIDEWALKS ARE LOCATED ON BOTH SIDES OF THE STREET, CONTRACTOR MUST MAINTAIN PEDESTRIAN ACCESS ON ONE SIDE AT ALL TIMES. CONTRACTOR MUST SUBMIT A SITE ACCESSIBILITY PLAN.
3. CONSTRUCTION IS TO BE COMPLETED LANE AT A TIME WITH TRAFFIC TO BE MAINTAINED IN BOTH DIRECTIONS. WHEN CONSTRUCTION IS COMPLETE IN THE FIRST LANE, TRAFFIC WILL BE MOVED TO THE COMPLETED LANE AND TRAFFIC CONTROL MIRRORED.
4. PARKING TO BE REMOVED AT TIME OF CONSTRUCTION.
5. RESIDENTIAL APPROACH ACCESS MUST BE MAINTAINED AT ALL TIMES.
6. ALL TRAFFIC SIGNAGE ON THIS DRAWING IS IN A REPRESENTATIVE LOCATION. FOR PROPER SPACING, REFER TO MANUAL OF TEMPORARY TRAFFIC CONTROL ON CITY STREETS.

TENDER NO. 18-2024

FOR INFORMATION ONLY

ENGINEERING DIVISION
TECHNOLOGY SERVICES BRANCH
106 - 1155 PACIFIC AVE



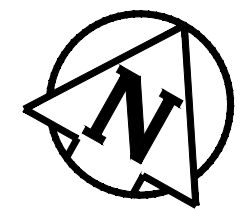
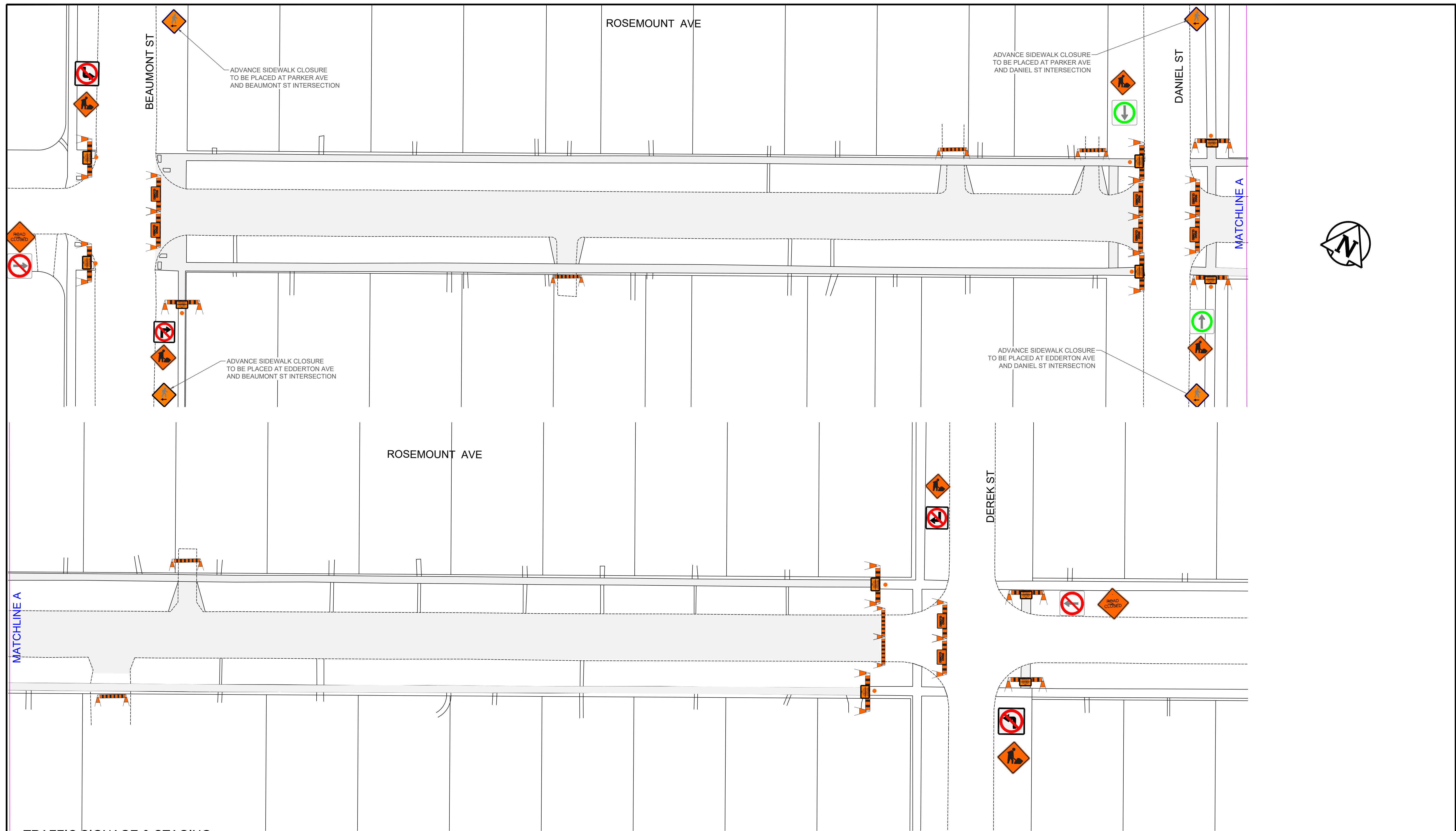
THE CITY OF WINNIPEG
PUBLIC WORKS DEPARTMENT

QUEENSTON BAY

FROM MATHERS AVENUE TO BROCK STREET

TEMPORARY TRAFFIC SIGNAGE & STAGING

SHEET 4 OF 7



TRAFFIC SIGNAGE & STAGING

TC-2 ROADWORK		THROUGH TRAFFIC ONLY	
RB-11 (L/R) TURN PROHIBITED		CONSTRUCTION AREA	
ROAD CLOSED / NO EXIT		C-46 SIDEWALK CLOSED	
BARRICADE		RB-10 NO STRAIGHT THROUGH	
SIDEWALK CLOSED AHEAD, CROSS HERE		POLY POST	

- NOTES:**
1. ALL TRAFFIC SIGNAGE AND TEMPORARY TRAFFIC CONTROL TO CONFORM WITH THE LATEST REVISION OF THE CITY OF WINNIPEG MANUAL OF TEMPORARY TRAFFIC CONTROL ON CITY STREETS
 2. CONTRACTOR SHALL MAINTAIN SAFE PEDESTRIAN ACCESS AND CROSSINGS. WHERE SIDEWALKS ARE LOCATED ON BOTH SIDES OF THE STREET, CONTRACTOR MUST MAINTAIN PEDESTRIAN ACCESS ON ONE SIDE AT ALL TIMES. CONTRACTOR MUST SUBMIT A SITE ACCESSIBILITY PLAN.
 3. CONSTRUCTION IS TO BE COMPLETED LANE AT A TIME WITH TRAFFIC TO BE MAINTAINED IN BOTH DIRECTIONS. WHEN CONSTRUCTION IS COMPLETE IN THE FIRST LANE, TRAFFIC WILL BE MOVED TO THE COMPLETED LANE AND TRAFFIC CONTROL MIRRORRED.
 4. PARKING TO BE REMOVED AT TIME OF CONSTRUCTION.
 5. RESIDENTIAL APPROACH ACCESS MUST BE MAINTAINED AT ALL TIMES.
 6. ALL TRAFFIC SIGNAGE ON THIS DRAWING IS IN A REPRESENTATIVE LOCATION. FOR PROPER SPACING, REFER TO MANUAL OF TEMPORARY TRAFFIC CONTROL ON CITY STREETS.

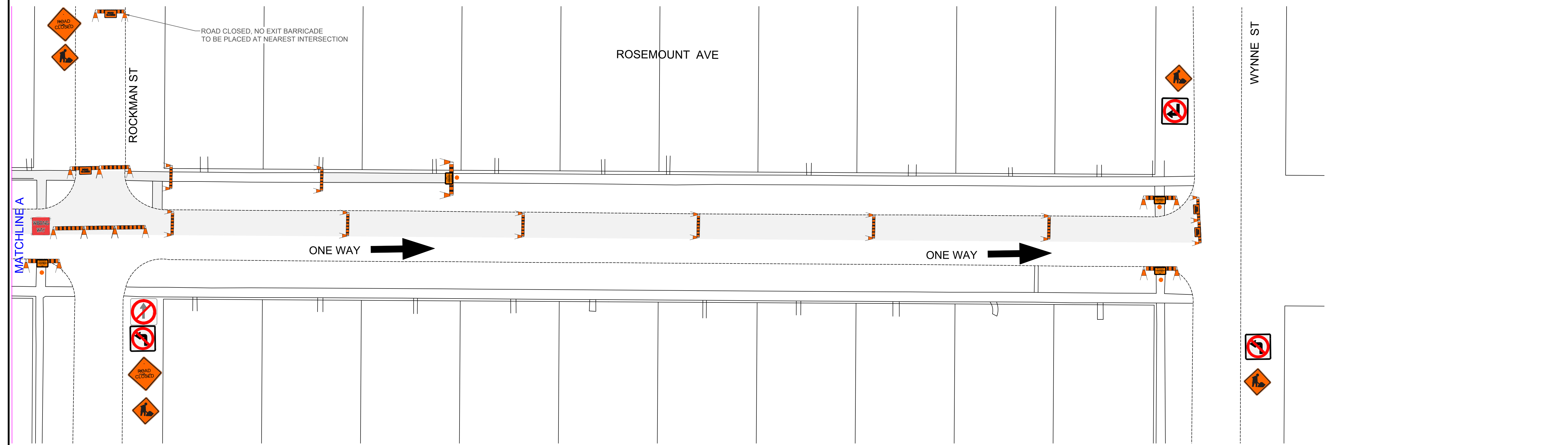
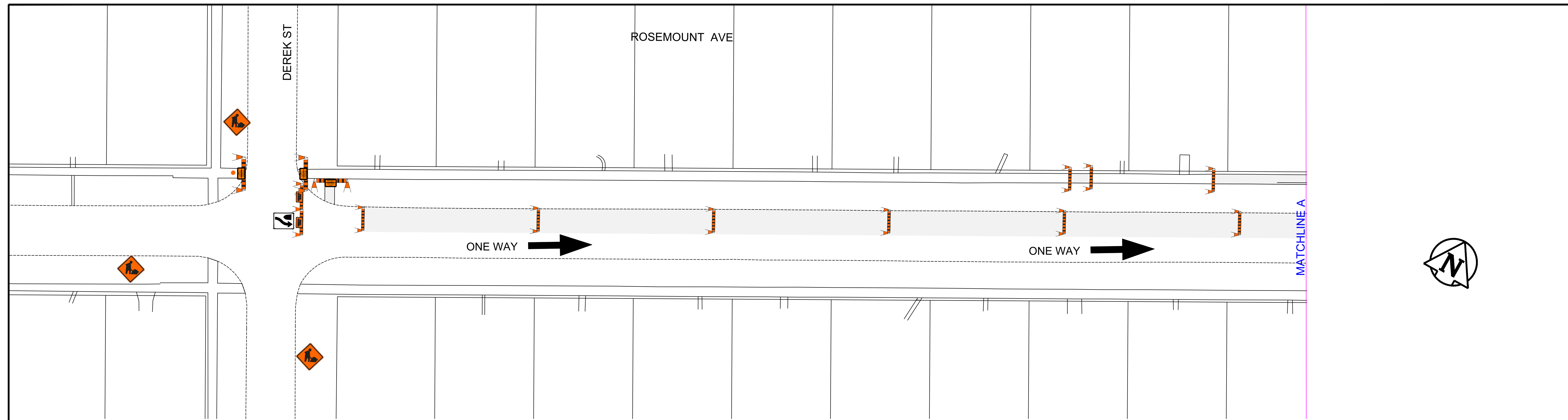
TENDER NO. 18-2024
FOR INFORMATION ONLY

ENGINEERING DIVISION
TECHNOLOGY SERVICES BRANCH
106 - 1155 PACIFIC AVE

THE CITY OF WINNIPEG
PUBLIC WORKS DEPARTMENT

ROSEMOUNT AVENUE
FROM BEAUMONT STREET TO DEREK STREET
TEMPORARY TRAFFIC SIGNAGE & STAGING

ENGINEERING DIVISION
TECHNOLOGY SERVICES BRANCH
106 - 1155 PACIFIC AVE



TRAFFIC SIGNAGE & STAGING

TC-2 ROADWORK



C-46 SIDEWALK CLOSED



WRONG WAY SIGN



RB-11 (L/R) TURN PROHIBITED



DIRECTION OF TRAVEL



POLY POST



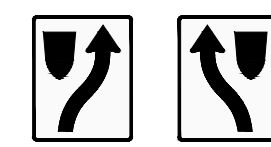
ROAD CLOSED / NO EXIT



CONSTRUCTION AREA



RB-25 (L/R) KEEP LEFT/RIGHT



BARRICADE



RB-10 NO STRAIGHT THROUGH



NOTES:

1. ALL TRAFFIC SIGNAGE AND TEMPORARY TRAFFIC CONTROL TO CONFORM WITH THE LATEST REVISION OF THE CITY OF WINNIPEG MANUAL OF TEMPORARY TRAFFIC CONTROL ON CITY STREETS
2. CONTRACTOR SHALL MAINTAIN SAFE PEDESTRIAN ACCESS AND CROSSINGS. WHERE SIDEWALKS ARE LOCATED ON BOTH SIDES OF THE STREET, CONTRACTOR MUST MAINTAIN PEDESTRIAN ACCESS ON ONE SIDE AT ALL TIMES. CONTRACTOR MUST SUBMIT A SITE ACCESSIBILITY PLAN.
3. CONSTRUCTION IS TO BE COMPLETED LANE AT A TIME WITH TRAFFIC TO BE MAINTAINED IN BOTH DIRECTIONS. WHEN CONSTRUCTION IS COMPLETE IN THE FIRST LANE, TRAFFIC WILL BE MOVED TO THE COMPLETED LANE AND TRAFFIC CONTROL MIRRORED.
4. PARKING TO BE REMOVED AT TIME OF CONSTRUCTION.
5. RESIDENTIAL APPROACH ACCESS MUST BE MAINTAINED AT ALL TIMES.
6. ALL TRAFFIC SIGNAGE ON THIS DRAWING IS IN A REPRESENTATIVE LOCATION, FOR PROPER SPACING. REFER TO MANUAL OF TEMPORARY TRAFFIC CONTROL ON CITY STREETS.

TENDER NO. 18-2024

FOR INFORMATION ONLY

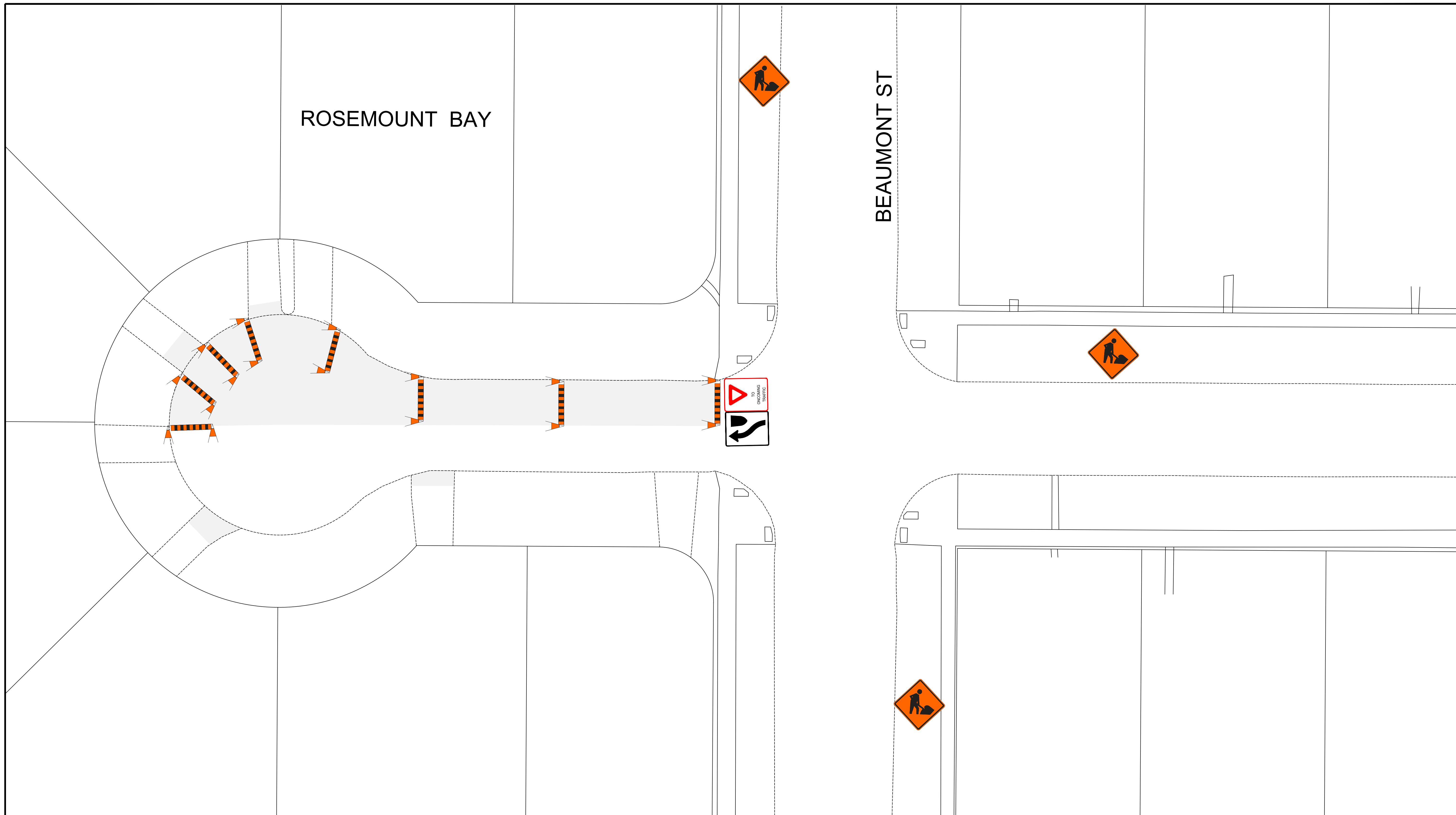
ENGINEERING DIVISION
TECHNOLOGY SERVICES BRANCH
106 - 1155 PACIFIC AVE



THE CITY OF WINNIPEG
PUBLIC WORKS DEPARTMENT

ROSEMOUNT AVE
FROM DEREK STREET TO WYNNE STREET
TEMPORARY TRAFFIC SIGNAGE & STAGING

SHEET 6 OF 7

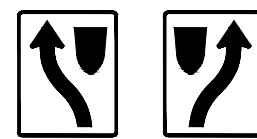


TRAFFIC SIGNAGE & STAGING

TC-2 ROADWORK



RB-25 (L/R) KEEP LEFT/RIGHT



BARRICADE



CONSTRUCTION AREA



TC-17 YIELD TO ONCOMING TRAFFIC



NOTES:

1. ALL TRAFFIC SIGNAGE AND TEMPORARY TRAFFIC CONTROL TO CONFORM WITH THE LATEST REVISION OF THE CITY OF WINNIPEG MANUAL OF TEMPORARY TRAFFIC CONTROL ON CITY STREETS
2. CONTRACTOR SHALL MAINTAIN SAFE PEDESTRIAN ACCESS AND CROSSINGS. WHERE SIDEWALKS ARE LOCATED ON BOTH SIDES OF THE STREET, CONTRACTOR MUST MAINTAIN PEDESTRIAN ACCESS ON ONE SIDE AT ALL TIMES. CONTRACTOR MUST SUBMIT A SITE ACCESSIBILITY PLAN.
3. CONSTRUCTION IS TO BE COMPLETED LANE AT A TIME WITH TRAFFIC TO BE MAINTAINED IN BOTH DIRECTIONS. WHEN CONSTRUCTION IS COMPLETE IN THE FIRST LANE, TRAFFIC WILL BE MOVED TO THE COMPLETED LANE AND TRAFFIC CONTROL MIRRORED.
4. PARKING TO BE REMOVED AT TIME OF CONSTRUCTION.
5. RESIDENTIAL APPROACH ACCESS MUST BE MAINTAINED AT ALL TIMES.
6. ALL TRAFFIC SIGNAGE ON THIS DRAWING IS A REPRESENTATIVE LOCATION FOR PROPER SPACING. REFER TO MANUAL OF TEMPORARY TRAFFIC CONTROL ON CITY STREETS.

ENGINEERING DIVISION
TECHNOLOGY SERVICES BRANCH
106 - 1155 PACIFIC AVE

FOR INFORMATION ONLY

TENDER NO. 18-2024



THE CITY OF WINNIPEG
PUBLIC WORKS DEPARTMENT

ROSEMOUNT BAY
FROM BEAUMONT STREET TO END
TEMPORARY TRAFFIC SIGNAGE & STAGING

SHEET 7 OF 7