

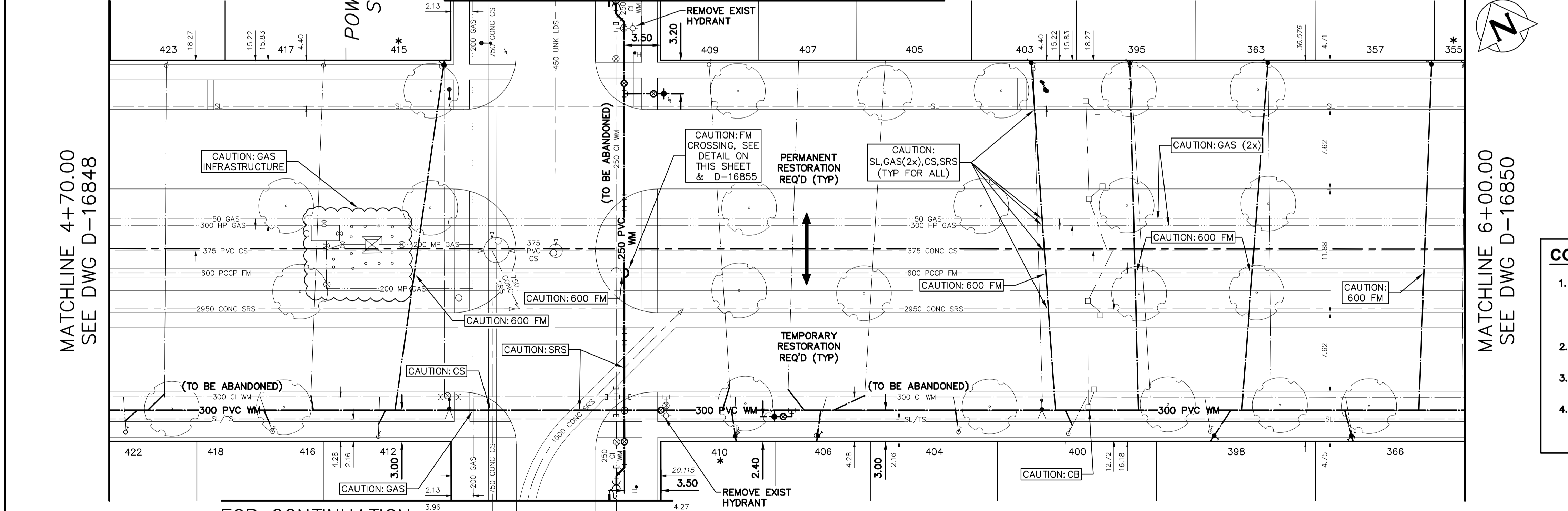
WATER SERVICE INFORMATION					
ADDRESS	SIZE (mm)	SIZE (mm)	SHORT & LONG MEASUREMENTS	CORP. LOCATION	REMARKS
425 INKSTER BLVD	20	20	3.05 WEL HSE	OPP OF S/C	RECONNECT SERVICE
RESIDENTIAL	CU	CU	36.375 WWL POWERS ST		
426 INKSTER BLVD	20	20	2.13 WEL HSE	0.6 W OF S/C	RECONNECT SERVICE
RESIDENTIAL	CU	CU	43.437 WWL POWERS ST		
429 INKSTER BLVD	20	20	2.44 WEL HSE	OPP OF S/C	RECONNECT SERVICE
RESIDENTIAL	CU	CU	47.164 WWL POWERS ST		
430 INKSTER BLVD	20	20	3.20 WEL HSE	1.2 W OF S/C	RECONNECT SERVICE
RESIDENTIAL	CU	CU	56.209 WWL POWERS ST		
433 INKSTER BLVD	20	20	4.72 WEL HSE	1.4 W OF S/C	RECONNECT SERVICE
RESIDENTIAL	CU	CU	63.292 WWL POWERS ST		
434 INKSTER BLVD	20	20	1.68 WEL HSE	OPP OF S/C	RECONNECT SERVICE
RESIDENTIAL	CU	CU	63.849 WWL POWERS ST		
437 INKSTER BLVD	20	20	3.20 WEL HSE	OPP OF S/C	RECONNECT SERVICE
RESIDENTIAL	CU	CU	73.456 WWL POWERS ST		
438 INKSTER BLVD	20	20	2.59 WEL HSE	0.8 W OF S/C	RECONNECT SERVICE
RESIDENTIAL	CU	CU	77.088 WWL POWERS ST		
439 INKSTER BLVD	20	20	3.35 EWL HSE	OPP OF S/C	RECONNECT SERVICE
RESIDENTIAL	CU	CU	85.711 WWL POWERS ST		
442 INKSTER BLVD	20	20	0.60 EWL HSE	0.9 W OF S/C	RECONNECT SERVICE
RESIDENTIAL	CU	CU	85.695 EEL ANDREWS ST		
443 INKSTER BLVD	20	20	2.13 WEL HSE	0.6 E OF S/C	RECONNECT SERVICE
RESIDENTIAL	CU	CU	82.393 EEL ANDREWS ST		
444 INKSTER BLVD	20	20	2.13 WEL HSE	0.6 E OF S/C	RECONNECT SERVICE
RESIDENTIAL	CU	CU	77.692 EEL ANDREWS ST		
445 INKSTER BLVD	20	20	3.05 EWL HSE	OPP OF S/C	RECONNECT SERVICE
RESIDENTIAL	CU	CU	71.084 EEL ANDREWS ST		
446 INKSTER BLVD	20	20	0.30 WEL HSE	0.6 E OF S/C	RECONNECT SERVICE
RESIDENTIAL	CU	CU	69.843 EEL ANDREWS ST		DUPLEX
452 INKSTER BLVD	20	20	1.98 WEL HSE	0.8 W OF S/C	RECONNECT SERVICE
RESIDENTIAL	CU	CU	55.422 EEL ANDREWS ST		
456 INKSTER BLVD	20	20	3.35 EEL HSE	1.2 E OF S/C	RECONNECT SERVICE
RESIDENTIAL	CU	CU	40.044 EEL ANDREWS ST		
457 INKSTER BLVD	20	20	1.52 WEL HSE	OPP OF S/C	RECONNECT SERVICE
RESIDENTIAL	CU	CU	59.233 EEL ANDREWS ST		
458 INKSTER BLVD	20	20	4.00 EWL HSE	1.5 E OF S/C	OUTSIDE RENEWAL LIMITS
RESIDENTIAL	CU	CU	28.430 EEL ANDREWS ST		
459 INKSTER BLVD	16	20	3.51 WEL HSE	3.7 E OF S/C	RECONNECT SERVICE
RESIDENTIAL	CU	CU	44.128 EEL ANDREWS ST		
463 INKSTER BLVD	20	20	1.90 WEL HSE	0.3 W OF S/C	OUTSIDE RENEWAL LIMITS
RESIDENTIAL	LEAD	LEAD	31.154 EEL ANDREWS ST		
466 INKSTER BLVD	20	20	3.60 WEL HSE	2.2 E OF S/C	OUTSIDE RENEWAL LIMITS
RESIDENTIAL	CU	CU	0.000 ??. ANY ST		
467 INKSTER BLVD	20	12	0.60 EWL HSE	0.5 E OF S/C	OUTSIDE RENEWAL LIMITS
RESIDENTIAL	LEAD	LEAD	18.854 EEL ANDREWS ST		

* SERVICES TO BE RENEWED TO PL. ALL OTHERS TO BE RECONNECTED.

NOTE: CHAINAGES SHOWN ARE ALONG S. R. OF INKSTER BLVD

FOR CONTINUATION SEE DWG D-16855

INKSTER BOULEVARD



INSTALLATION EQUIPMENT FOR THE PROPOSED WORKS SHALL NOT CROSS OR TRAVEL ALONG EITHER SIDE OF THE FEEDER MAIN WITHIN A LATERAL DISTANCE OF 5.0 METERS FROM THE CENTERLINE OF THE FEEDER MAIN.

CONCRETE DEMOLITION AND REMOVAL WITHIN 3 METERS HORIZONTALLY OF THE FEEDER MAIN SHALL BE COMPLETED BY SAWCUTTING AND REMOVAL, OR BY THE USE OF HAND HELD JACKHAMMERS. USE OF MACHINE MOUNTED CONCRETE BREAKERS ABOVE THE FEEDER MAIN SHALL NOT BE PERMITTED.

DO NOT OPERATE VIBRATORY EQUIPMENT OVER OR WITHIN 3.0 METERS OF THE FEEDER MAIN.

A MINIMUM CLEARANCE OF 1.0 METER MUST BE PROVIDED BETWEEN THE UNDERSIDE OF ANY EXISTING FEEDER MAIN AND THE TOP OF THE PROPOSED WORKS. THIS INSTALLATION BY TRENCHLESS METHOD ONLY.

A MINIMUM CLEARANCE OF 0.5 METER MUST BE PROVIDED BETWEEN THE UNDERSIDE OF THE PROPOSED WORKS AND THE TOP OF ANY EXISTING FEEDER MAIN BY TRENCHLESS METHOD OR OPEN TRENCH.

A SHAFT MUST BE EXCAVATED BY SOFT DIG METHODS 4.0 METERS FROM THE CENTERLINE OF THE FEEDER MAIN TO CONFIRM THE ALIGNMENT AND ELEVATION OF THE DRILLING ROD BEFORE IT CROSSES OVER OR UNDER THE FEEDER MAIN. THIS CONFIRMATION MUST BE WITNESSED BY A CITY REPRESENTATIVE.

- ### CONSTRUCTION NOTES
- EXCAVATIONS WITHIN 3.0m OF THE OUTSIDE EDGE OF A FEEDER MAIN (EXCLUDING HYDROVAC HOLES) AND WHICH EXTEND BELOW THE OVERT OF THE FEEDER MAIN SHALL UTILIZE SHORING METHODS THAT PRECLUDE THE MOVEMENT OF NATIVE IN-SITU SOILS AND PIPE BEDDING (I.E. TIGHT SHORING SYSTEMS).
 - EXISTING FEEDER MAIN SHALL BE EXPOSED USING HYDROVAC EXCAVATION TO CONFIRM DEPTH PRIOR TO CROSSING OF NEW WATER MAINS OR WATER SERVICES.
 - MIN. CLEARANCE FOR ALL FEEDER MAIN CROSSINGS SHALL BE 1.0m UNDER OR 0.5m OVER EXISTING FEEDER MAIN.
 - THE CONTRACTOR SHALL CONSULT WITH MANITOBA HYDRO FOR HIGH PRESSURE GAS MAIN CROSSING REQUIREMENTS. FULL TIME SAFETY WATCH AND HYDROVAC EXCAVATION TO CONFIRM DEPTHS PRIOR TO CROSSING IS REQUIRED.

FOR INDEX SEE D-16845

NOTE: ALL VALVES TO BE INSTALLED COUNTERCLOCKWISE TO CLOSE

FOR CONTINUATION SEE DWG D-16855

WARNING

IF POWER EQUIPMENT OR EXPLOSIVES ARE TO BE USED FOR EXCAVATION ON THIS PROJECT THE CONTRACTOR MUST:

- NOTIFY THE GAS COMPANY OF THE PROPOSED LOCATION OF EXCAVATION.
- TAKE PRECAUTION TO AVOID DAMAGE TO GAS COMPANY INSTALLATIONS.

SEE PROVINCIAL REGULATION 210/72 FOR DETAILS

LOCATION APPROVED UNDERGROUND STRUCTURES

SUPV. U/G STRUCTURES COMMITTEE DATE

NOTE:

LOCATION OF UNDERGROUND STRUCTURES AS SHOWN ARE BASED ON THE BEST INFORMATION AVAILABLE BUT NO GUARANTEE IS GIVEN THAT ALL EXISTING UTILITIES ARE SHOWN OR THAT THE GIVEN LOCATIONS ARE EXACT. CONFIRMATION OF EXISTENCE AND EXACT LOCATION OF ALL SERVICES MUST BE OBTAINED FROM THE INDIVIDUAL UTILITIES BEFORE PROCEEDING WITH CONSTRUCTION.

VERTICAL DATUM: CGVD28 (HT2.0 Geoid)

HORIZONTAL DATUM: NAD83 (June 1990), Zone 14

NO.	ISSUED FOR CONSTRUCTION	DATE	BY
0	ISSUED FOR CONSTRUCTION	2024/03/12	NJK

NO. REVISIONS YYYY/MM/DD BY

MH MORRISON HERSHFIELD now **Stantec**

DESIGNED BY: JKH CHECKED BY: NJK

DRAWN BY: DML APPROVED BY: ADB

SCALE: HORIZONTAL 1:250 VERTICAL 1:50

RELEASED FOR CONSTRUCTION: RYAN LUCKY

DATE: MARCH 12, 2024 DATE: MARCH 11, 2024

PLOT DATE: 2024 03 12

ENGINEER'S SEAL

CONSULTANT DRAWING NUMBER

THE CITY OF WINNIPEG

WATER AND WASTE DEPARTMENT

ENGINEERING SERVICES DIVISION

2024 WATER MAIN RENEWALS

CONTRACT 6

INKSTER BOULEVARD

33m W OF POWERS STREET TO 77m E OF POWERS STREET

SHEET 6 OF 12

CITY DRAWING NUMBER

D-16849

ENGINEERS GEOSCIENTISTS MANITOBA

Certificate of Authorization MORRISON HERSHFIELD No. 1736

METRIC

WHOLE NUMBERS INDICATE MILLIMETRES
DECIMALIZED NUMBERS INDICATE METRES
UNLESS OTHERWISE NOTED