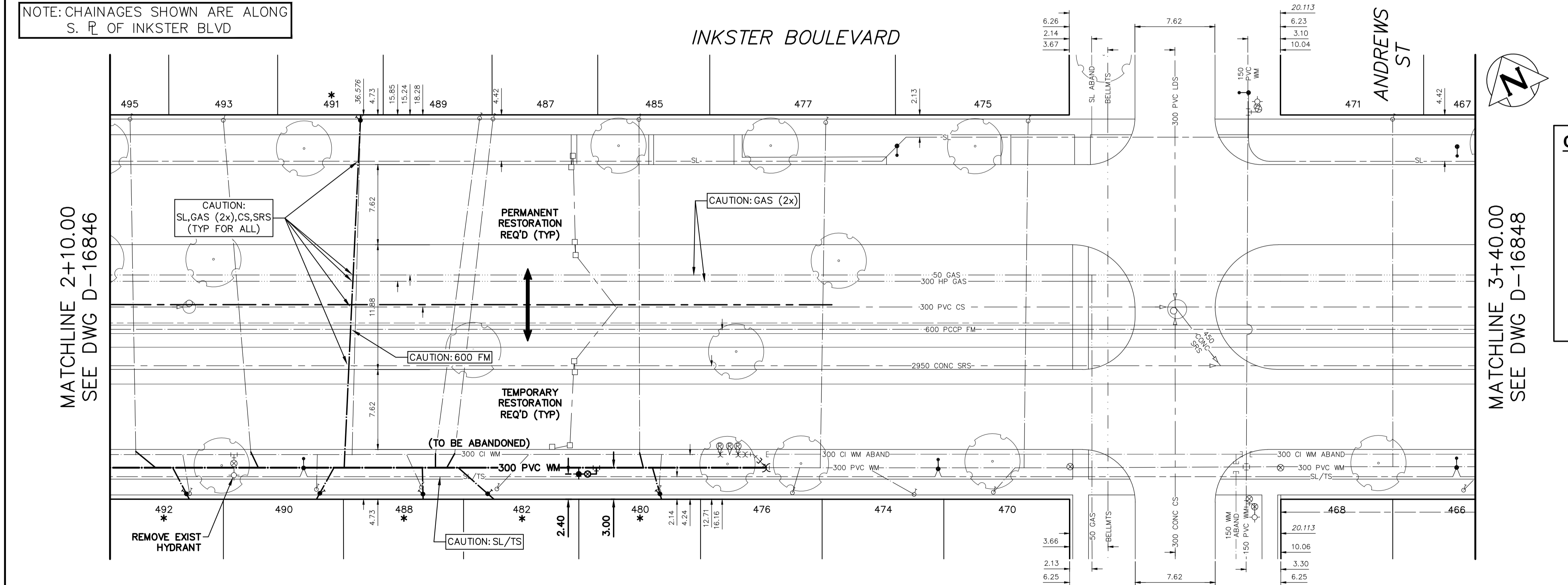


WATER SERVICE INFORMATION					
ADDRESS	SIZE (mm) MATERIAL (STREET)	SIZE (mm) MATERIAL (PROP.)	SHORT & LONG MEASUREMENTS	CORP. LOCATION	REMARKS
466 INKSTER BLVD	20	20	3.60 WEL HSE	2.2 E OF S/C	OUTSIDE RENEWAL LIMITS
RESIDENTIAL	CU	CU	17.40 EEL ANDREWS ST	-	-
468 INKSTER BLVD	20	20	2.40 NSL HSE	0.9 S OF S/C	OUTSIDE RENEWAL LIMITS
RESIDENTIAL	CU	CU	15.00 SSL INKSTER BLVD	-	SERVICED OFF ANDREWS ST
470 INKSTER BLVD	20	20	3.60 WWL HSE	2.1 E OF S/C	OUTSIDE RENEWAL LIMITS
RESIDENTIAL	CU	LEAD	7.25 WWL ANDREWS ST	-	-
471 INKSTER BLVD	20	20	2.20 WEL HSE	0.1 E OF S/C	OUTSIDE RENEWAL LIMITS
RESIDENTIAL	CU	LEAD	10.677 EEL ANDREWS ST	-	-
474 INKSTER BLVD	20	20	1.30 WEL HSE	4.3 W OF S/C	OUTSIDE RENEWAL LIMITS
RESIDENTIAL	CU	LEAD	14.806 WWL ANDREWS ST	-	-
475 INKSTER BLVD	20	20	3.10 WEL HSE	0.2 W OF S/C	OUTSIDE RENEWAL LIMITS
RESIDENTIAL	CU	CU	3.915 WWL ANDREWS ST	-	-
476 INKSTER BLVD	20	20	1.40 WEL HSE	0.9 E OF S/C	OUTSIDE RENEWAL LIMITS
RESIDENTIAL	CU	CU	26.395 WWL ANDREWS ST	-	-
477 INKSTER BLVD	20	20	4.00 WEL HSE	0.3 W OF S/C	OUTSIDE RENEWAL LIMITS
RESIDENTIAL	CU	CU	23.187 WWL ANDREWS ST	-	-
* 480 INKSTER BLVD	20	20	2.13 WEL HSE	OPP OF S/C	RENEW TO P/L W/20 CU
RESIDENTIAL	LEAD	LEAD	39.105 WWL ANDREWS ST	-	-
* 482 INKSTER BLVD	20	20	5.18 WEL HSE	3.6 E OF S/C	RENEW TO P/L W/20 CU
RESIDENTIAL	LEAD	CU	54.524 WWL ANDREWS ST	-	-
485 INKSTER BLVD	20	12	2.59 EWL HSE	OPP OF S/C	RECONNECT SERVICE
RESIDENTIAL	CU	LEAD	40.970 WWL ANDREWS ST	-	-
* 487 INKSTER BLVD	20	12	1.52 WEL HSE	3.7 W OF S/C	RECONNECT SERVICE
RESIDENTIAL	CU	LEAD	54.866 WWL ANDREWS ST	-	-
* 488 INKSTER BLVD	20	12	2.44 WEL HSE	OPP OF S/C	RENEW TO P/L W/20 CU
RESIDENTIAL	LEAD	LEAD	61.714 WWL ANDREWS ST	-	-
489 INKSTER BLVD	20	12	0.91 EEL HSE	3.0 W OF S/C	RECONNECT SERVICE
RESIDENTIAL	CU	LEAD	56.137 WWL ANDREWS ST	-	-
* 490 INKSTER BLVD	20	20	0.91 WEL HSE	OPP OF S/C	RENEW TO P/L W/20 CU
RESIDENTIAL	LEAD	LEAD	71.709 WWL ANDREWS ST	-	-
* 491 INKSTER BLVD	20	20	1.52 WEL HSE	OPP OF S/C	RENEW TO P/L W/20 CU
RESIDENTIAL	LEAD	LEAD	67.481 WWL ANDREWS ST	-	-
* 492 INKSTER BLVD	20	20	1.22 WEL HSE	0.6 W OF S/C	RENEW TO P/L W/20 CU
RESIDENTIAL	LEAD	LEAD	83.788 WWL ANDREWS ST	-	-
493 INKSTER BLVD	20	20	4.27 EWL HSE	1.8 E OF S/C	RECONNECT SERVICE
RESIDENTIAL	CU	CU	80.550 WWL ANDREWS ST	-	-
495 INKSTER BLVD	20	20	1.83 WEL HSE	OPP OF S/C	RECONNECT SERVICE
RESIDENTIAL	CU	LEAD	89.423 WWL ANDREWS ST	-	-

\* SERVICES TO BE RENEWED TO P/L. ALL OTHERS TO BE RECONNECTED.

NOTE: CHAINAGES SHOWN ARE ALONG S. R. OF INKSTER BLVD



- ### CONSTRUCTION NOTES
- EXCAVATIONS WITHIN 3.0m OF THE OUTSIDE EDGE OF A FEEDER MAIN (EXCLUDING HYDROVAC HOLES) AND WHICH EXTEND BELOW THE OVERT OF THE FEEDER MAIN SHALL UTILIZE SHORING METHODS THAT PRECLUDE THE MOVEMENT OF NATIVE IN-SITU SOILS AND PIPE BEDDING (i.e. TIGHT SHORING SYSTEMS).
  - EXISTING FEEDER MAIN SHALL BE EXPOSED USING HYDROVAC EXCAVATION TO CONFIRM DEPTH PRIOR TO CROSSING OF NEW WATER MAINS OR WATER SERVICES.
  - MIN. CLEARANCE FOR ALL FEEDER MAIN CROSSINGS SHALL BE 1.0m UNDER OR 0.5m OVER EXISTING FEEDER MAIN.
  - THE CONTRACTOR SHALL CONSULT WITH MANITOBA HYDRO FOR HIGH PRESSURE GAS MAIN CROSSING REQUIREMENTS. FULL TIME SAFETY WATCH AND HYDROVAC EXCAVATION TO CONFIRM DEPTHS PRIOR TO CROSSING IS REQUIRED.

FOR INDEX SEE D-16845

NOTE: ALL VALVES TO BE INSTALLED COUNTERCLOCKWISE TO CLOSE

**ENGINEERS GEOSCIENTISTS MANITOBA**  
Certificate of Authorization MORRISON HERSHFIELD No. 1736

**METRIC**  
WHOLE NUMBERS INDICATE MILLIMETRES  
DECIMALIZED NUMBERS INDICATE METRES  
UNLESS OTHERWISE NOTED

**WARNING**  
IF POWER EQUIPMENT OR EXPLOSIVES ARE TO BE USED FOR EXCAVATION ON THIS PROJECT THE CONTRACTOR MUST:  
1) NOTIFY THE GAS COMPANY OF THE PROPOSED LOCATION OF EXCAVATION.  
2) TAKE PRECAUTION TO AVOID DAMAGE TO GAS COMPANY INSTALLATIONS.  
SEE PROVINCIAL REGULATION 210/72 FOR DETAILS

**LOCATION APPROVED UNDERGROUND STRUCTURES**  
SUPV. U/G STRUCTURES COMMITTEE DATE  
NOTE:  
LOCATION OF UNDERGROUND STRUCTURES AS SHOWN ARE BASED ON THE BEST INFORMATION AVAILABLE BUT NO GUARANTEE IS GIVEN THAT ALL EXISTING UTILITIES ARE SHOWN OR THAT THE GIVEN LOCATIONS ARE EXACT. CONFIRMATION OF EXISTENCE AND EXACT LOCATION OF ALL SERVICES MUST BE OBTAINED FROM THE INDIVIDUAL UTILITIES BEFORE PROCEEDING WITH CONSTRUCTION.

VERTICAL DATUM: CGVD28 (HT2.0 Geoid)  
HORIZONTAL DATUM: NAD83 (June 1990), Zone 14

NO.	ISSUED FOR CONSTRUCTION	DATE	BY
0	ISSUED FOR CONSTRUCTION	2024/03/12	NJK
NO.	REVISIONS	DATE	BY

**MH MORRISON HERSHFIELD** now **Stantec**

DESIGNED BY: JKH  
DRAWN BY: DML  
SCALE: HORIZONTAL 1:250, VERTICAL 1:50  
DATE: MARCH 12, 2024

CHECKED BY: NJK  
APPROVED BY: ADB  
RELEASED FOR CONSTRUCTION: RYAN LUCKY  
DATE: MARCH 11, 2024

ENGINEER'S SEAL  
CONSULTANT DRAWING NUMBER

**THE CITY OF WINNIPEG**  
WATER AND WASTE DEPARTMENT  
ENGINEERING SERVICES DIVISION

2024 WATER MAIN RENEWALS  
CONTRACT 6  
INKSTER BOULEVARD  
91m W OF ANDREWS STREET TO  
18m E OF ANDREWS STREET

SHEET 4 OF 12  
CITY DRAWING NUMBER  
D-16847