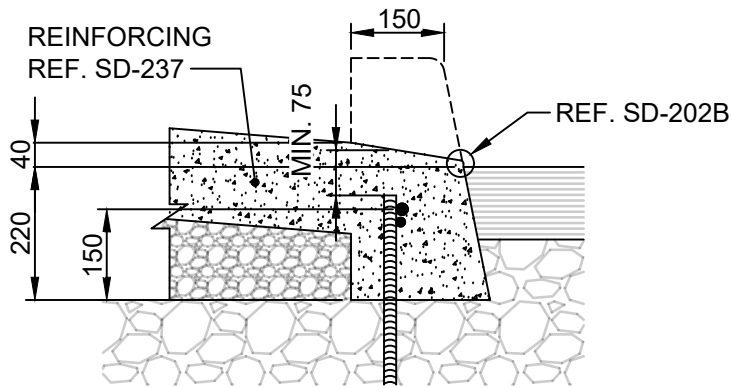
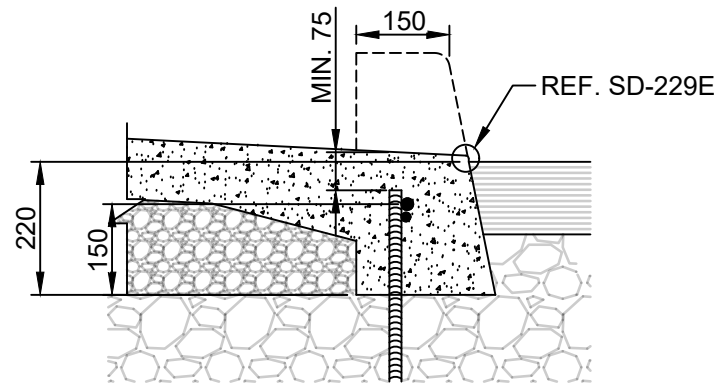


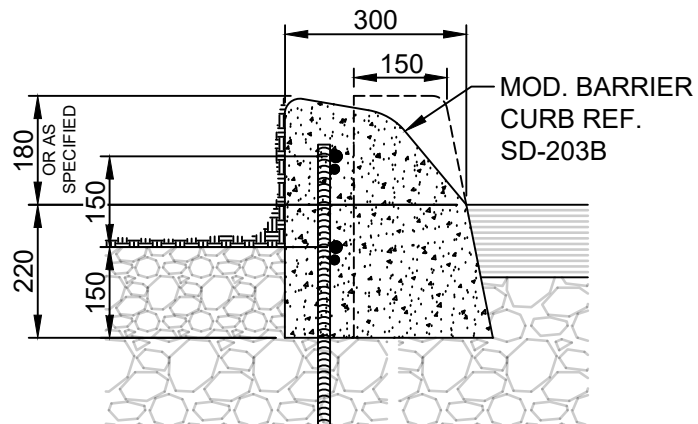
**APPENDIX 'B' – STANDARD DETAIL DRAWINGS: SD-200A & SD-220D**



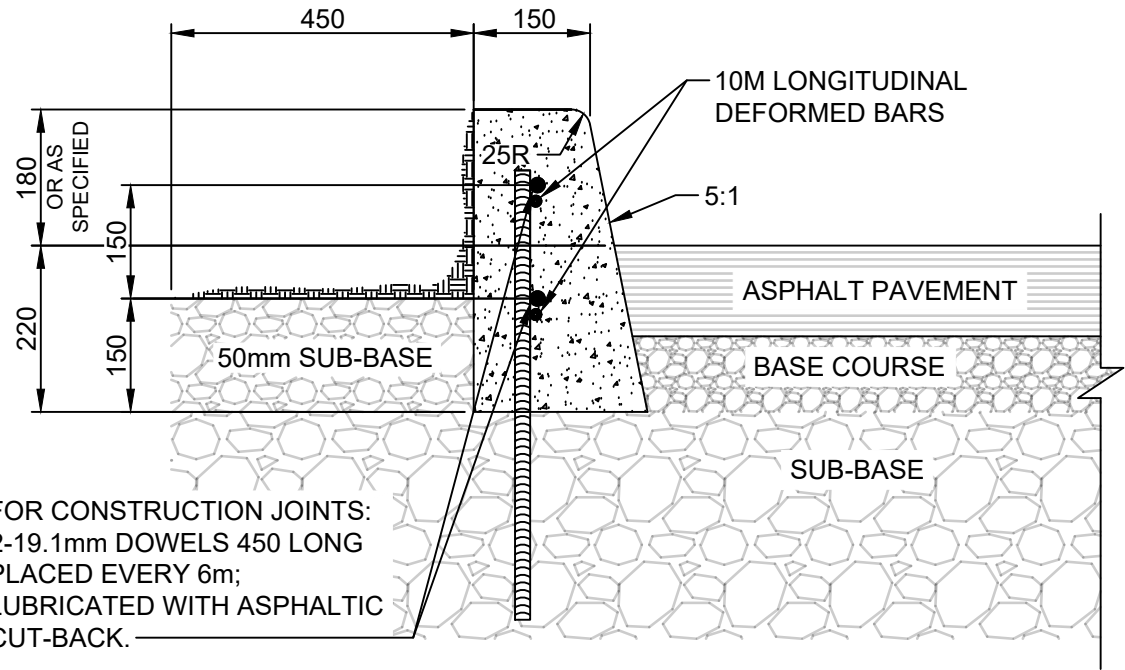
LIP CURB FOR ASPHALT PAVEMENTS



CURB RAMPS FOR ASPHALT PAVEMENTS



MODIFIED BARRIER CURB FOR ASPHALT PAVEMENTS



FOR CONSTRUCTION JOINTS:  
2-19.1mm DOWELS 450 LONG  
PLACED EVERY 6m;  
LUBRICATED WITH ASPHALTIC  
CUT-BACK.

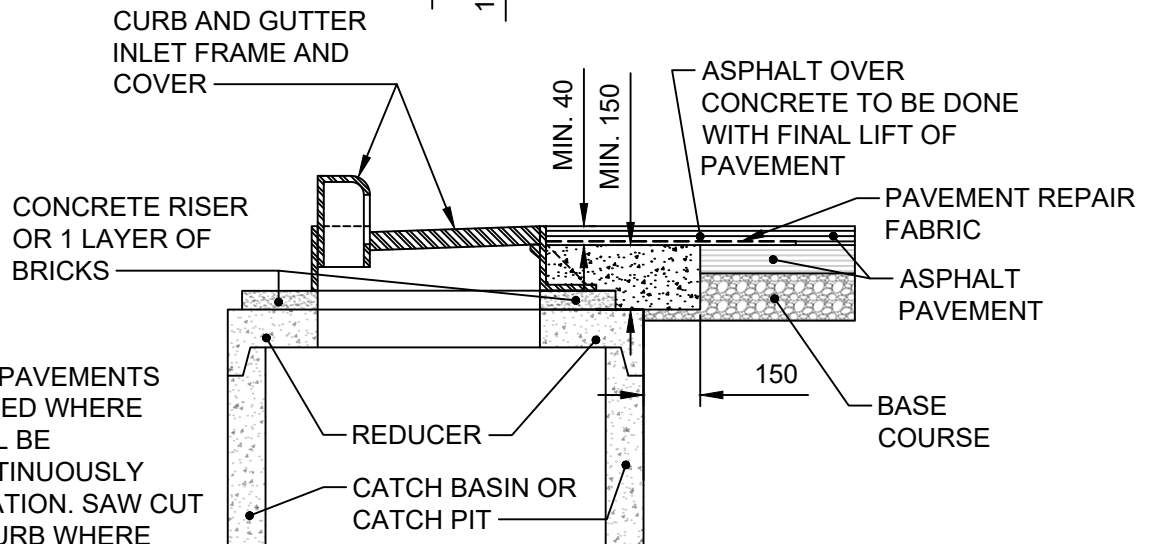
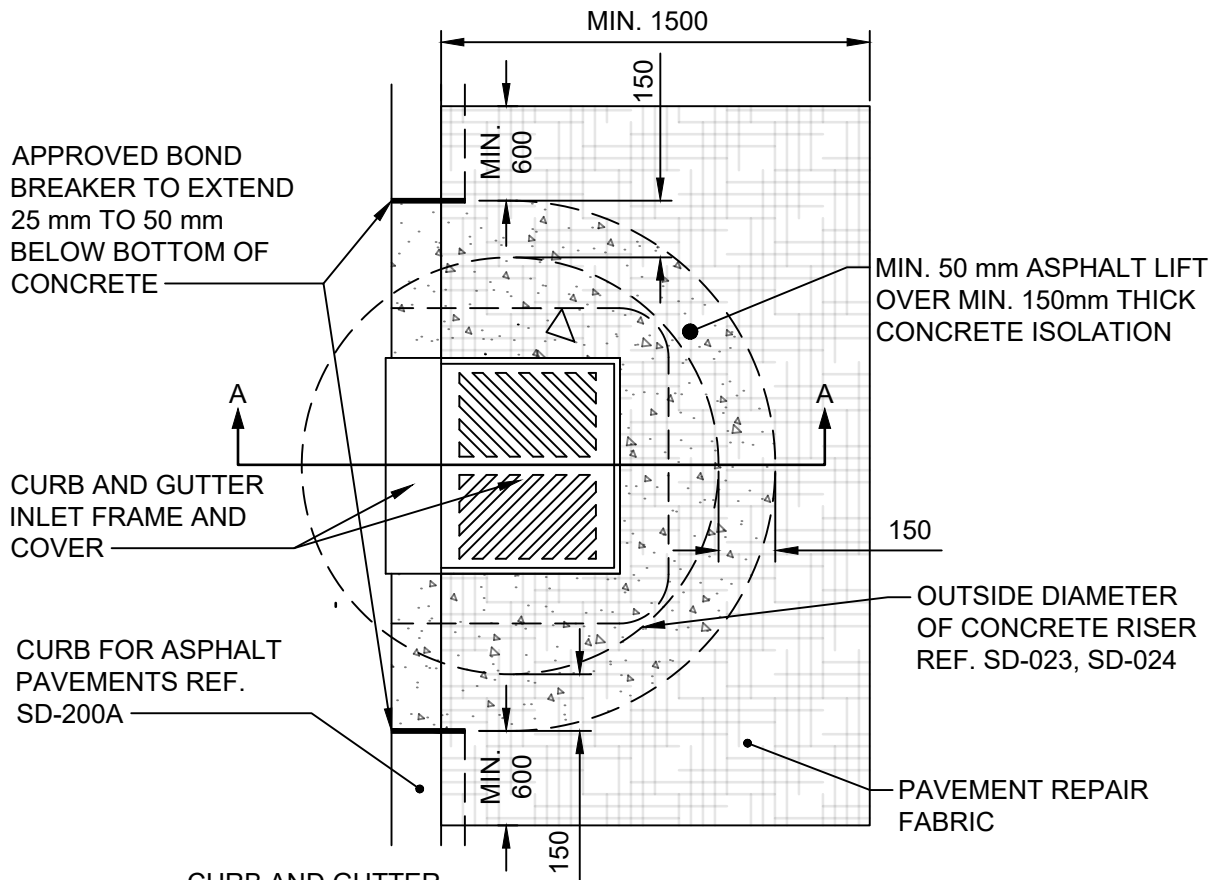
BARRIER CURB FOR ASPHALT PAVEMENTS

NOTES:

1. TRANSVERSE SAW CUT EVERY 3m OR AT PAVEMENT JOINTS.
2. TRANSVERSE SAW CUTS ARE TO BE A MAXIMUM DEPTH OF 25mm.

DIMENSIONS IN MILLIMETERS

THE CITY OF WINNIPEG PUBLIC WORKS DEPARTMENT		Revisions		
Reference Spec. No. CW 3240, CW 3310, CW 3325				
VARIOUS CURB TYPES FOR ASPHALT PAVEMENTS		No.	Date	Description
		Designed By: A.G.	Drawn By: R.B.	Scale : N.T.S.
		Checked By: B.K.	Date: 2022-02-21	Drawing No. SD-200A
		Approved: PAVEMENT MANAGEMENT BRANCH		DRAFT



**NOTE:**

CURB FOR ASPHALT PAVEMENTS SHALL BE SLIP FORMED WHERE POSSIBLE AND SHALL BE CONSTRUCTED CONTINUOUSLY THROUGH THE ISOLATION. SAW CUT AND REMOVE THE CURB WHERE ISOLATION WILL BE INSTALLED.

**SECTION A-A**

DIMENSIONS IN MILLIMETRES



**THE CITY OF WINNIPEG**  
PUBLIC WORKS DEPARTMENT

Reference Spec. No.  
CW 3325

Revisions			
No.	Date	Description	By

INLET ISOLATION DETAIL FOR  
ASPHALT PAVEMENTS

Designed By: A.G.	Drawn By: R.B.	Scale : N.T.S.
Checked By: B.K.	Date: 2023-2-16	Drawing No. SD-220D
Approved: PAVEMENT MANAGEMENT BRANCH		DRAFT