

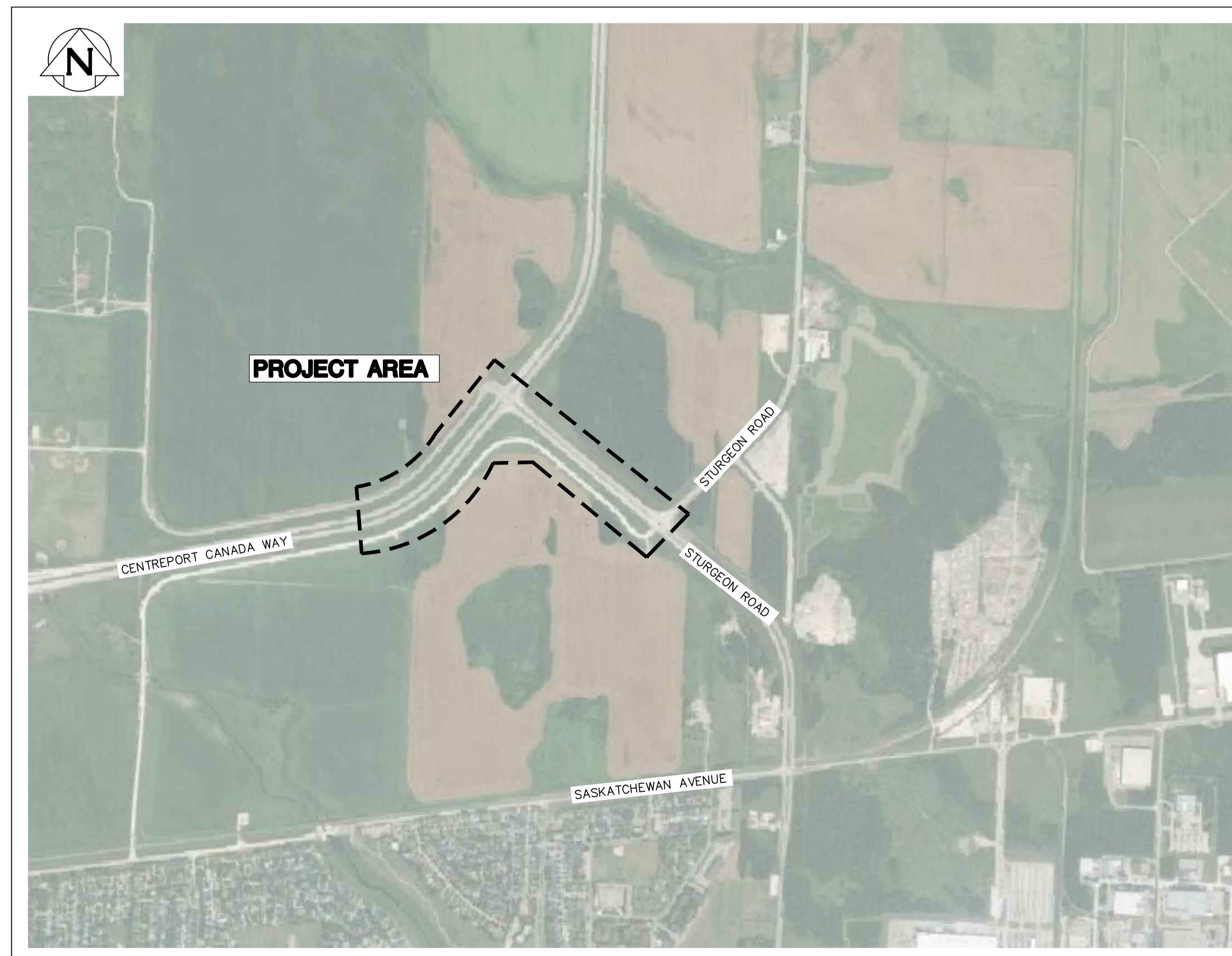


THE CITY OF WINNIPEG

WATER AND WASTE DEPARTMENT
ENGINEERING DIVISION

CENTREPORT SOUTH REGIONAL WATER AND WASTEWATER SERVICING PHASE 1A (CONTRACT 3)

BID OPPORTUNITY 990-2023A



KEY MAP



Rev A
SHEET 1 OF 8
CITY DRAWING NUMBER
XX-XXX

DRAWING INDEX

SHEET NUMBER	CITY OF WINNIPEG DRAWING NUMBER	DRAWING TITLE
1	C-3-101	COVER SHEET
2	C-3-102	INDEX PAGE & KEYPLAN
3	C-3-103	CENTREPORT CANADA WAY - STA 1+975 TO STA 2+250
4	C-3-104	CENTREPORT CANADA WAY - STA 2+250 TO STA 2+525
5	C-3-105	CENTREPORT CANADA WAY - STA 2+525 TO STA 2+800
6	C-3-106	CENTREPORT CANADA WAY - STA 2+800 TO STA 2+800
7	C-3-107	CENTREPORT CANADA WAY - STA 2+755 TO STA 3+045
8	C-3-108	MISCELLANEOUS DETAILS

LEGEND

DESCRIPTION	PLAN VIEW		
	ABANDONED	EXISTING	PROPOSED
WATER PIPE			
FIRE HYDRANT			
VALVE			
CURB STOP			
REDUCER			
COUPLING OR SLIDDER			
CROSS			
BEND - 11.25', 22.5', 45', 90'			
TEE			
VERTICAL BEND			
ANODE			
REPAIR MARKER			
PLUG			
SEWER PIPE			
MANHOLE			
CATCH BASIN			
CURB INLET			
JUNCTION			
∅ DITCH			
CULVERT			
SURVEY BAR			
SURVEY MONUMENT			
TREE - DECIDUOUS			
TREE - CONIFEROUS			
HYDRO			
HYDRO POLE			
LAMP STANDARD			
HYDRO POLE W/STREET LIGHTING			
POLE			
GUY ANCHOR			
M.T.S. POLE			
PEDESTAL OR BOX			
CABINET			
M.T.S., SHAW, OR VIDEON			
TRAFFIC SIGNALS			
TRAFFIC LIGHT STANDARD			
GAS			
STEAM			
FIBRE OPTIC			
FENCE			
EDGE OF PAVEMENT OR GUTTER			
EDGE UNPAVED OR GRAVEL ROAD			
∅			
PROJECTED ∅			
LOT LINE			
SIDEWALK - PATHWAY			
EASEMENT			
EDGE OF BUILDING			
MAILBOX			
PARKING METER			
TEST HOLE			
TREE LINE OR BUSH			

ABBREVIATIONS

ABAND	ABANDONED
AC	ASBESTOS CEMENT
BLDG	BUILDING
B.M.	BENCH MARK
CB	CATCH BASIN
CI	CAST IRON
CI	CURB INLET
∅	CENTER LINE
CONC	CONCRETE
CRN	CORNER
CS	COMBINED SEWER
C/S OR S/C	CURB STOP
CULV	CULVERT
C/W	CONSTRUCTED WITH
DI	DUCTILE IRON
E	EAST
ELEV	ELEVATION
EXIST	EXISTING
FCM	FORCE MAIN (PRESSURIZED SEWER MAIN)
FIBRE	FIBRE OPTIC
FM	FEEDERMAIN
G.I.S.	GEOGRAPHIC INFORMATION SYSTEM
HDPE	HIGH DENSITY POLYETHYLENE
HORZ.	HORIZONTAL
HSE	HOUSE
HYD	HYDRANT
I.B.	IRON BAR
INV	INVERT
LDS	LAND DRAINAGE SEWER
MAX	MAXIMUM
MH	MANHOLE
MIN	MINIMUM
MTS	MANITOBA TELEPHONE SYSTEM
N	NORTH
OPP	OPPOSITE
PCCP	PRESTRESSED CONCRETE CYLINDER PIPE
∅	PROPERTY LINE
PVC	POLYVINYL CHLORIDE
R.O.W.	RIGHT-OF-WAY
S	SOUTH
SL	STREET LIGHTING
TH	TEST HOLE
TS	TRAFFIC SIGNALS
TYP	TYPICAL
VC OR CLAY	VITRIFIED CLAY
VERT.	VERTICAL
W	WEST
W/	WITH
WM	WATER MAIN
WWS	WASTE WATER SEWER
X-ING	CROSSING

HATCH PATTERNS

	EARTH OR GROUND ABOVE PIPE
	SAND OR OTHER FINE MATERIAL
	CONCRETE
	WASHED STONE OR GRANULAR MATERIAL
	INTERLOCKING STONE
	METAL
	GRAVEL OR STONE
	LAYDOWN AREA
	PIPE EASEMENT

TESTHOLE HATCH PATTERNS

	ORGANIC TOP SOIL
	ROCK FLOUR
	FILL (MADE GROUND)
	CLAY
	TILL
	SAND & GRAVEL
	LIMESTONE

PROFILE

DESCRIPTION	ABANDONED	EXISTING	PROPOSED
WATER PIPE			
HYDRANT TOP			
VALVE			
TEE OR CROSS			
COUPLING OR BEND			
REDUCER			
END OF PIPE			
SEWER PIPE			
UNPAVED GROUND SURFACE			
PAVED GROUND SURFACE - ∅ PIPE			
GUTTER (NORTH AND WEST)			
GUTTER (SOUTH AND EAST)			
∅ DITCH (NORTH AND WEST)			
∅ DITCH (SOUTH AND EAST)			
STRUCTURE			
MANHOLE OR CATCH BASIN			

FOR INDEX SEE C-3-102

PRELIMINARY
NOT TO BE USED FOR CONSTRUCTION

PROPERTY LIMITS DELINEATION
DELINEATION OF PROPERTY LIMITS AS SHOWN ON THIS DWG DOES NOT REPRESENT A "LEGAL SURVEY". KGS GROUP MAKES NO REPRESENTATION OR WARRANTY AS TO THE ACCURACY OF PROPERTY LIMITS DELINEATED ON THIS DWG, NOR ON THE DIMENSIONAL ACCURACY OF DWG FEATURES RELATIVE TO THOSE PROPERTY LIMITS.

WARNING
IF POWER EQUIPMENT OR EXPLOSIVES ARE TO BE USED FOR EXCAVATION ON THIS PROJECT THE CONTRACTOR MUST:
1) NOTIFY THE GAS COMPANY OF THE PROPOSED LOCATION OF EXCAVATION.
2) TAKE PRECAUTION TO AVOID DAMAGE TO GAS COMPANY INSTALLATIONS.
SEE PROVINCIAL REGULATION 210/72 FOR DETAILS

LOCATION APPROVED UNDERGROUND STRUCTURES
SUPV. U/G STRUCTURES COMMITTEE DATE
NOTE:
LOCATION OF UNDERGROUND STRUCTURES AS SHOWN ARE BASED ON THE BEST INFORMATION AVAILABLE BUT NO GUARANTEE IS GIVEN THAT ALL EXISTING UTILITIES ARE SHOWN OR THAT THE GIVEN LOCATIONS ARE EXACT. CONFIRMATION OF EXISTENCE AND EXACT LOCATION OF ALL UTILITIES MUST BE OBTAINED FROM THE INDIVIDUAL UTILITIES BEFORE PROCEEDING WITH CONSTRUCTION.

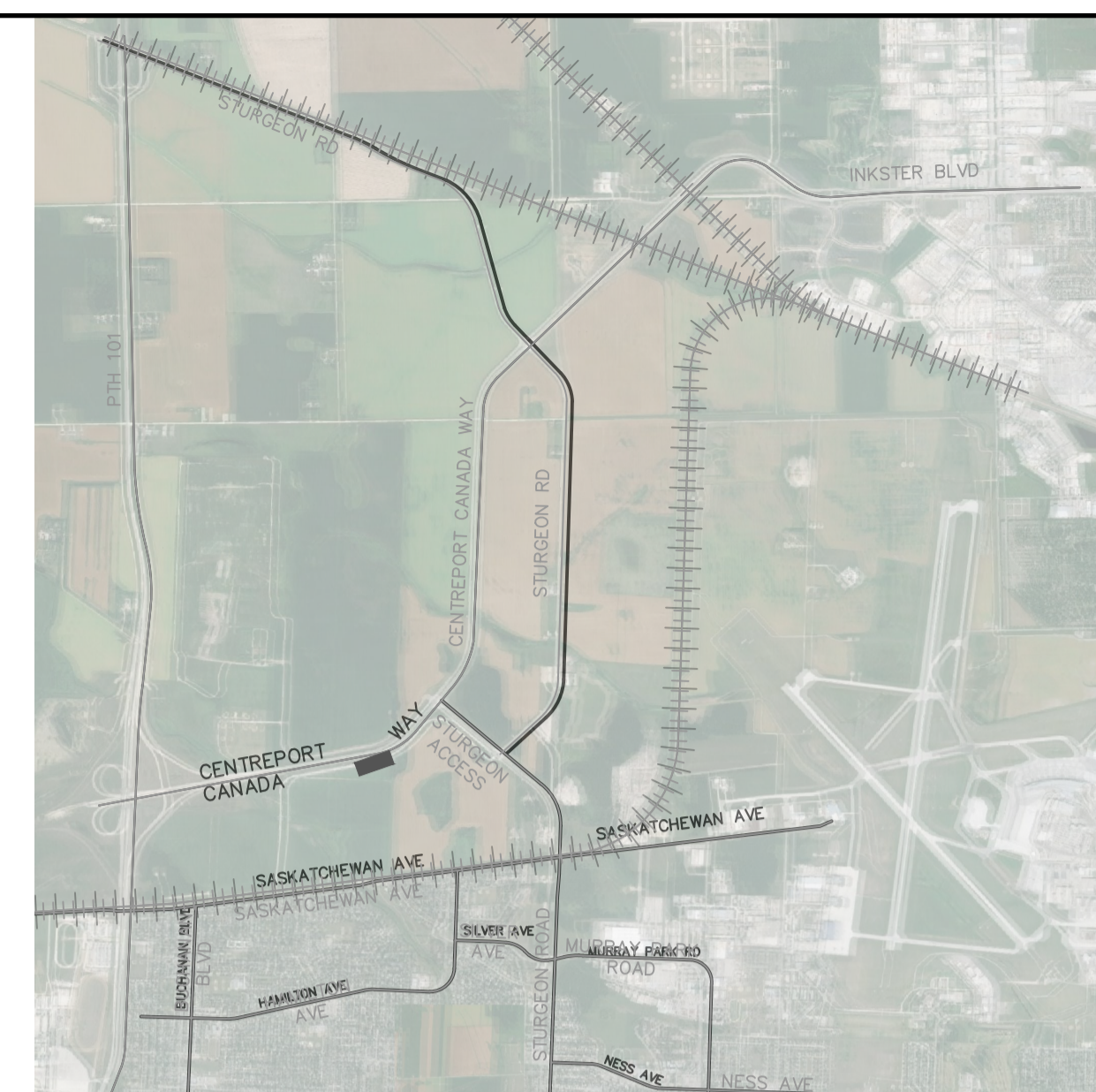
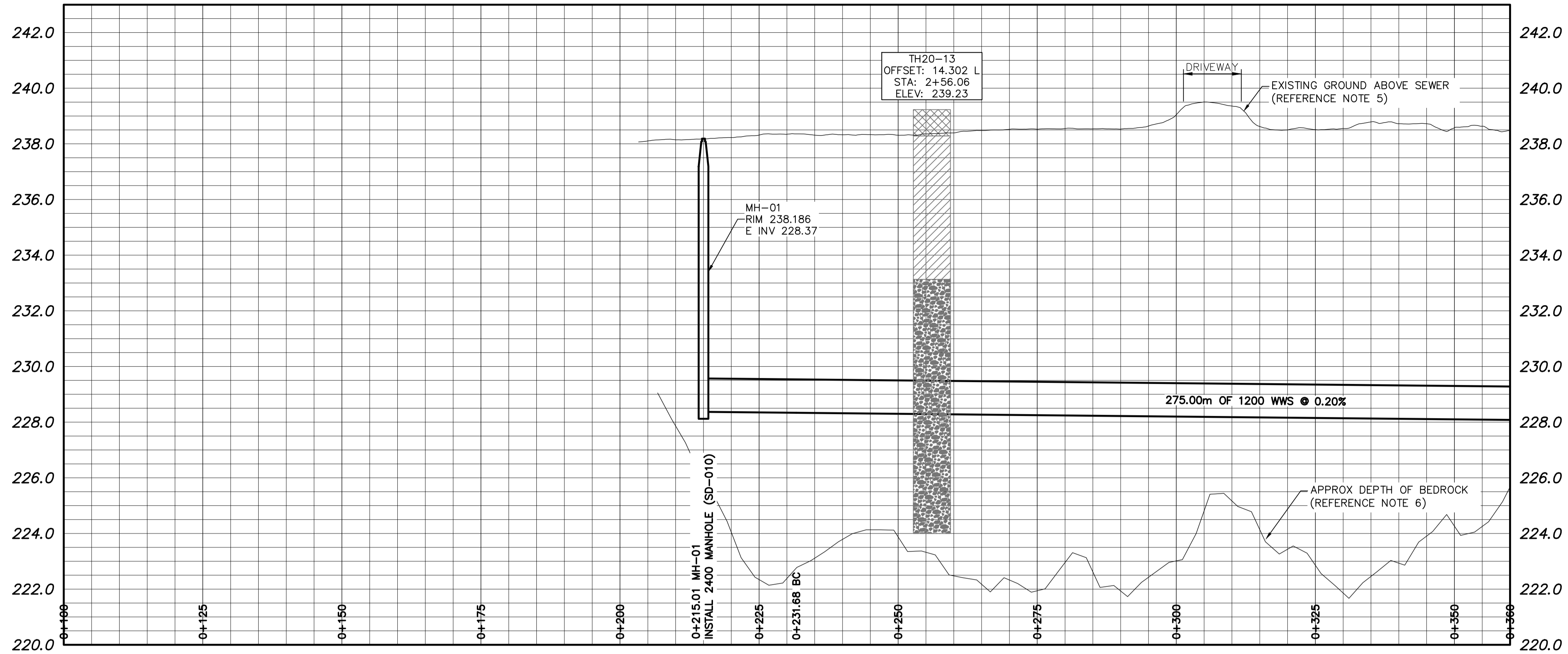
VERTICAL DATUM: CGVD28 (HT2.0 Geoid)	
HORIZONTAL DATUM: NAD83 (June 1990), Zone 14	
NO.	REVISIONS
A	ISSUED FOR RFQ
DATE	2024/01/31
BY	GLG
DATE	2024 01 30

DESIGNED BY	NGV	CHECKED BY	.
DRAWN BY	GLG	APPROVED BY	.
SCALE:		RELEASED FOR CONSTRUCTION	
HORIZONTAL	1:500		
VERTICAL	1:50		
DATE	2024 01 30	DATE	.

ENGINEER'S SEAL
CONSULTANT DRAWING NUMBER
C-3-102

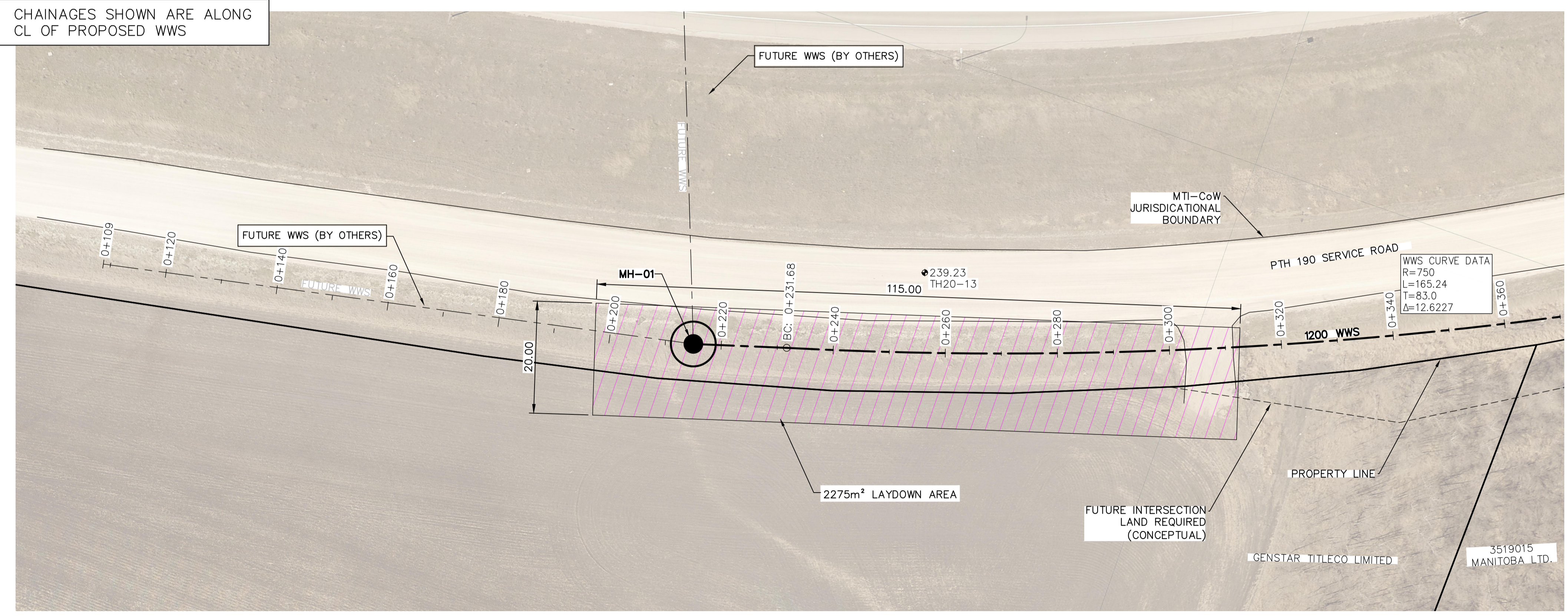
THE CITY OF WINNIPEG
WATER AND WASTE DEPARTMENT
ENGINEERING SERVICES DIVISION
CENTREPORT SOUTH REGIONAL WATER AND WASTEWATER
SERVICING - PHASE 1A (CONTRACT 3)
INDEX PAGE
SHEET 2 OF 8
CITY DRAWING NUMBER
XX-XXXX

WHOLE NUMBERS INDICATE MILLIMETRES
DECIMALIZED NUMBERS INDICATE METRES



- NOTES:**
- ALL UTILITIES SHOWN ON DRAWINGS ARE APPROXIMATE ONLY. LOCATIONS OF ALL UTILITIES TO BE CONFIRMED IN FIELD BY THE CONTRACTOR.
 - INSTALL NEW SEWER BY MICROTUNNELLING METHODS, UNLESS OTHERWISE NOTED.
 - ALL SIZING FOR SHAFTS ARE SHOWN FOR PLANNING PURPOSES ONLY. CONTRACTOR TO DESIGN AND SIZE SHAFTS AS REQUIRED BASED ON THEIR SUPPORT OF EXCAVATION METHODOLOGY AND TO ACCOMMODATE THE PERMANENT STRUCTURES IDENTIFIED.
 - FURTHER TO NOTE 3, THE CONTRACTOR IS REQUIRED TO REMOVE SUPPORT OF EXCAVATION SYSTEM TO A MINIMUM OF 3.0 M BELOW SURFACE.
 - THE EXISTING GROUND ELEVATIONS SHOWN ON THE DRAWINGS ARE BASED ON LIDAR DATA OBTAINED NOV 2020.
 - THE APPROXIMATE DEPTH OF BEDROCK ELEVATIONS SHOWN ON THE DRAWINGS IS BASED ON THE GEOPHYSICAL SEISMIC REFRACTION INVESTIGATIONS CARRIED OUT AT THE SITE. CONTRACTOR TO REFERENCE THE GEOTECHNICAL BASELINE REPORT (GBR) PROVIDED IN THE CONTRACT DOCUMENTS FOR A SUMMARY OF THE ANTICIPATED SUBSURFACE CONDITIONS ALONG THE INTERCEPTOR SEWER ALIGNMENT.
 - CONTRACTOR TO RESTORE SITE TO PRE-CONSTRUCTION CONDITION FOLLOWING COMPLETION OF CONSTRUCTION.
 - ALL PIPES TO BE INSTALLED WITH LOW FLOW CHANNEL SEE DETAIL C108.
 - PIPE TO BE REINFORCED CONCRETE JACKING PIPES DESIGNED BY CONTRACTOR TO ASCE 27-17 DIRECT DESIGN.

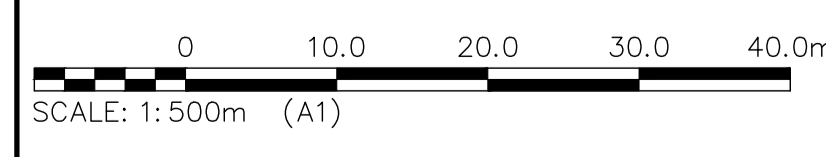
NOTE: CHAINAGES SHOWN ARE ALONG CL OF PROPOSED WWS



FOR CONTINUATION SEE DWG C-3-104

FOR INDEX SEE C-3-102

PRELIMINARY
NOT TO BE USED FOR CONSTRUCTION



WHOLE NUMBERS INDICATE MILLIMETRES
DECIMALIZED NUMBERS INDICATE METRES

PROPERTY LIMITS DELINEATION
DELINEATION OF PROPERTY LIMITS AS SHOWN ON THIS DWG DOES NOT REPRESENT A "LEGAL SURVEY". KGS GROUP MAKES NO REPRESENTATION OR WARRANTY AS TO THE ACCURACY OF PROPERTY LIMITS DELINEATED ON THIS DWG, NOR ON THE DIMENSIONAL ACCURACY OF DWG FEATURES RELATIVE TO THOSE PROPERTY LIMITS.

WARNING
IF POWER EQUIPMENT OR EXPLOSIVES ARE TO BE USED FOR EXCAVATION ON THIS PROJECT THE CONTRACTOR MUST:
1) NOTIFY THE GAS COMPANY OF THE PROPOSED LOCATION OF EXCAVATION.
2) TAKE PRECAUTION TO AVOID DAMAGE TO GAS COMPANY INSTALLATIONS.
SEE PROVINCIAL REGULATION 210/72 FOR DETAILS

LOCATION APPROVED UNDERGROUND STRUCTURES
SUPV. U/G STRUCTURES COMMITTEE DATE
NOTE:
LOCATION OF UNDERGROUND STRUCTURES AS SHOWN ARE BASED ON THE BEST INFORMATION AVAILABLE BUT NO GUARANTEE IS GIVEN THAT ALL EXISTING UTILITIES ARE SHOWN OR THAT THE GIVEN LOCATIONS ARE EXACT. CONFIRMATION OF EXISTENCE AND EXACT LOCATION OF ALL SERVICES MUST BE OBTAINED FROM THE INDIVIDUAL UTILITIES BEFORE PROCEEDING WITH CONSTRUCTION.

VERTICAL DATUM: CGVD28 (HT2.0 Geoid)	
HORIZONTAL DATUM: NAD83 (June 1990), Zone 14	
NO.	REVISIONS
A	ISSUED FOR RFQ
DATE	2024/01/31
BY	GLG
DATE	2024 01 30
PLOT DATE: 2024 01 30	

KGS GROUP **AE Associated Engineering**

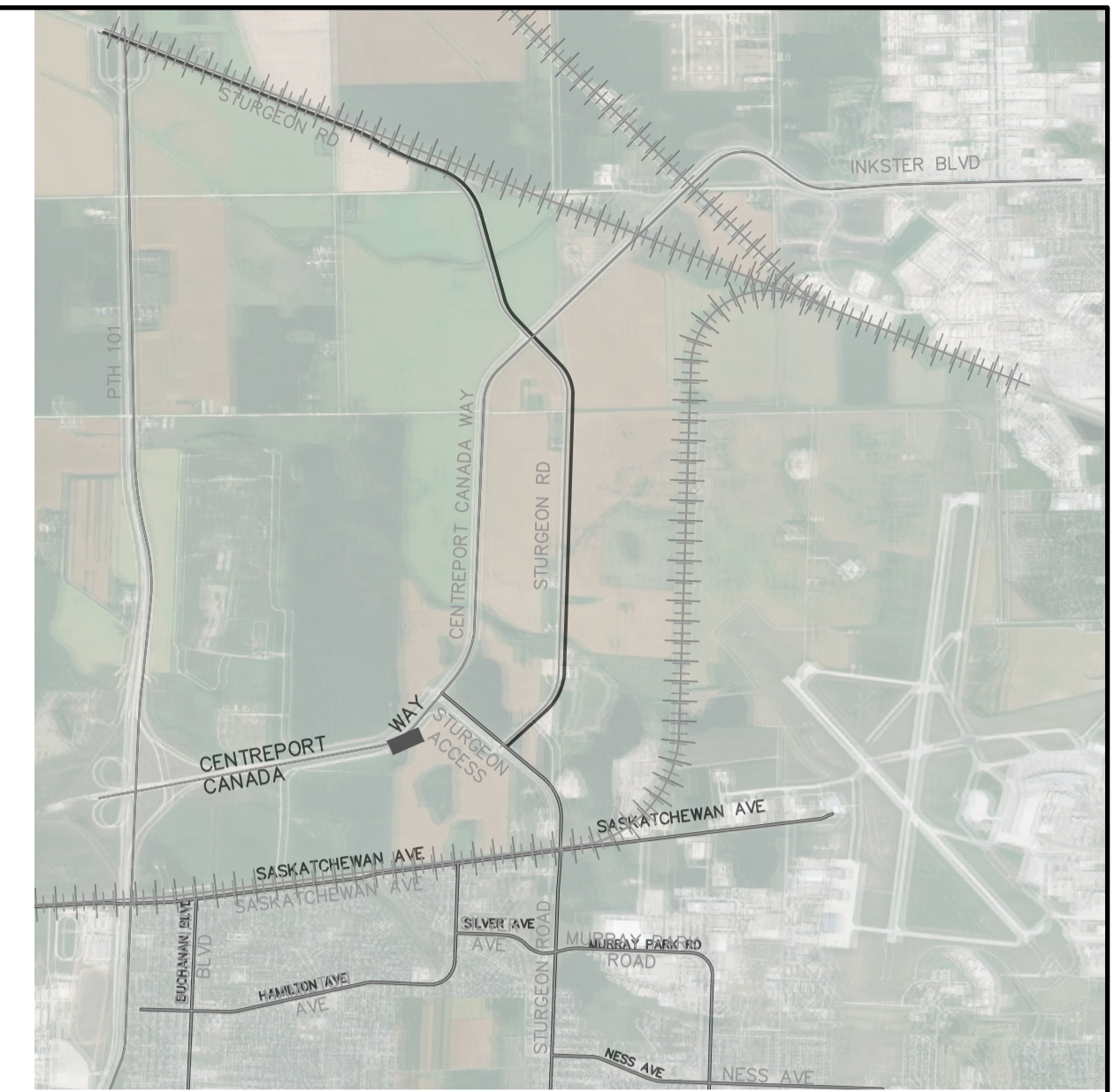
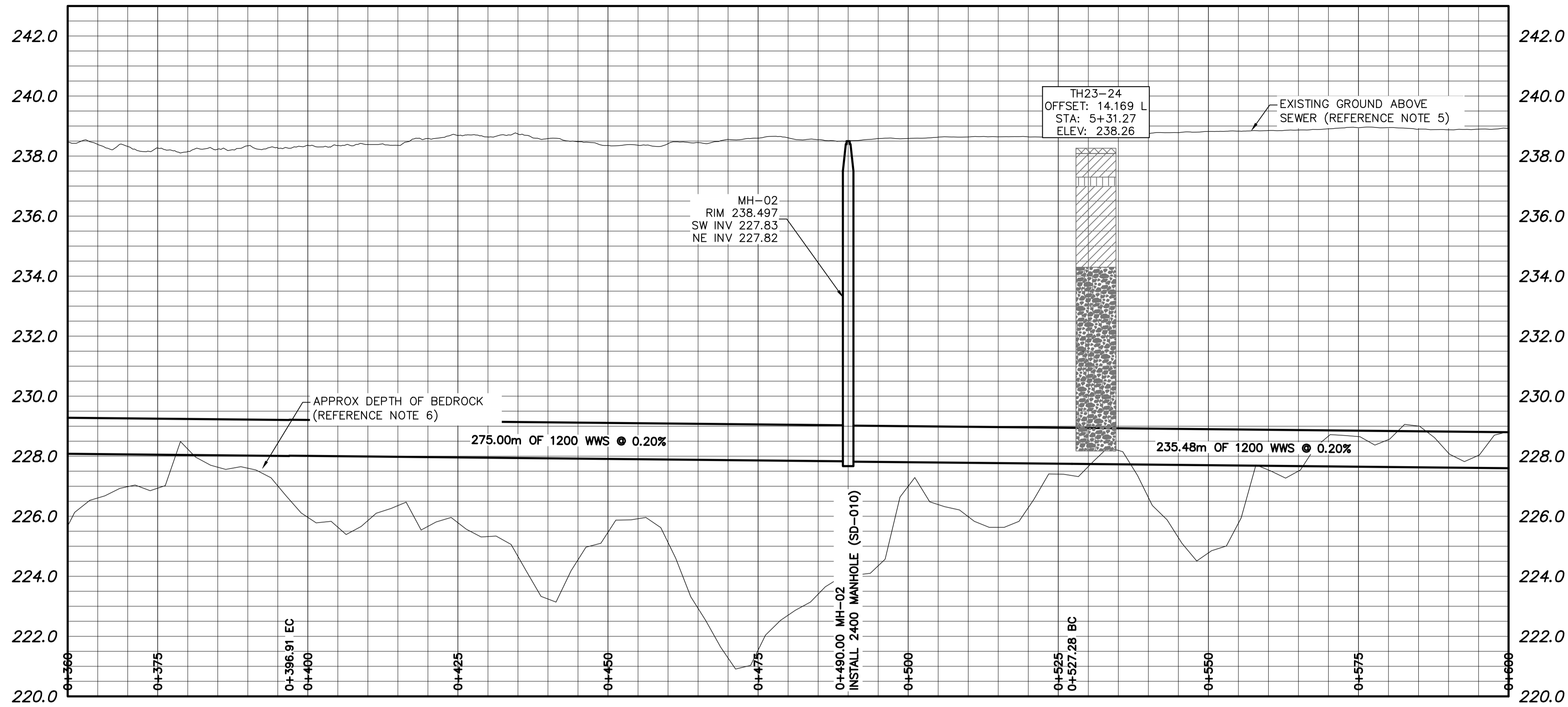
DESIGNED BY: NGV	CHECKED BY:
DRAWN BY: GLG	APPROVED BY:
SCALE: HORIZONTAL 1:500, VERTICAL 1:50	RELEASED FOR CONSTRUCTION:
DATE: 2024 01 30	DATE:

ENGINEER'S SEAL
CONSULTANT DRAWING NUMBER: C-3-103

THE CITY OF WINNIPEG
WATER AND WASTE DEPARTMENT
ENGINEERING SERVICES DIVISION

CENTREPORT SOUTH REGIONAL WATER AND WASTEWATER SERVICING - PHASE 1A (CONTRACT 3)
CENTREPORT CANADA WAY
STA 0+100 TO STA 0+360

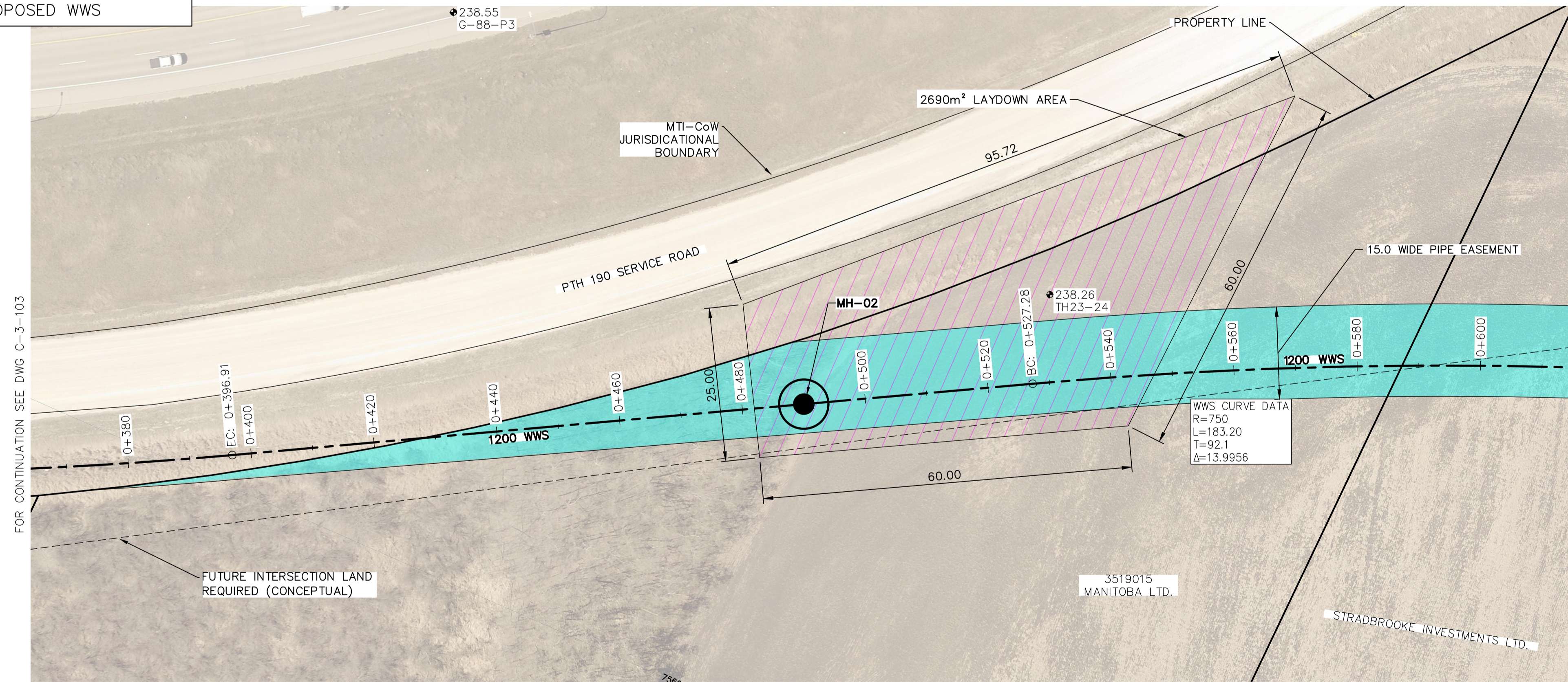
SHEET 3 OF 8
CITY DRAWING NUMBER: XX-XXXX



KEY PLAN
SCALE: 1:50,000

- NOTES:
1. ALL UTILITIES SHOWN ON DRAWINGS ARE APPROXIMATE ONLY. LOCATIONS OF ALL UTILITIES TO BE CONFIRMED IN FIELD BY THE CONTRACTOR.
 2. INSTALL NEW SEWER BY MICROTUNNELLING METHODS, UNLESS OTHERWISE NOTED.
 3. ALL SIZING FOR SHAFTS ARE SHOWN FOR PLANNING PURPOSES ONLY. CONTRACTOR TO DESIGN AND SIZE SHAFTS AS REQUIRED BASED ON THEIR SUPPORT OF EXCAVATION METHODOLOGY AND TO ACCOMMODATE THE PERMANENT STRUCTURES IDENTIFIED.
 4. FURTHER TO NOTE 3, THE CONTRACTOR IS REQUIRED TO REMOVE SUPPORT OF EXCAVATION SYSTEM TO A MINIMUM OF 3.0 M BELOW SURFACE.
 5. THE EXISTING GROUND ELEVATIONS SHOWN ON THE DRAWINGS ARE BASED ON LIDAR DATA OBTAINED NOV 2020.
 6. THE APPROXIMATE DEPTH OF BEDROCK ELEVATIONS SHOWN ON THE DRAWINGS IS BASED ON THE GEOPHYSICAL SEISMIC REFRACTION INVESTIGATIONS CARRIED OUT AT THE SITE. CONTRACTOR TO REFERENCE THE GEOTECHNICAL BASELINE REPORT (GBR) PROVIDED IN THE CONTRACT DOCUMENTS FOR A SUMMARY OF THE ANTICIPATED SUBSURFACE CONDITIONS ALONG THE INTERCEPTOR SEWER ALIGNMENT.
 7. CONTRACTOR TO RESTORE SITE TO PRE-CONSTRUCTION CONDITION FOLLOWING COMPLETION OF CONSTRUCTION.
 8. ALL PIPES TO BE INSTALLED WITH LOW FLOW CHANNEL SEE DETAIL C108.
 9. PIPE TO BE REINFORCED CONCRETE JACKING PIPES DESIGNED BY CONTRACTOR TO ASCE 27-17 DIRECT DESIGN.

NOTE: CHAINAGES SHOWN ARE ALONG CL OF PROPOSED WWS

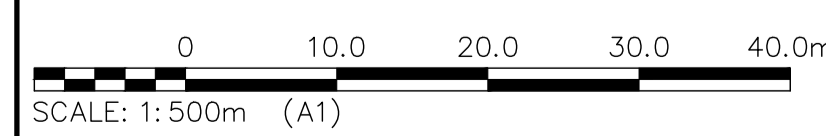


FOR CONTINUATION SEE DWG C-3-103

FOR CONTINUATION SEE DWG C-3-105

FOR INDEX SEE
C-3-102

PRELIMINARY
NOT TO BE USED FOR CONSTRUCTION



WHOLE NUMBERS INDICATE MILLIMETRES
DECIMALIZED NUMBERS INDICATE METRES

PROPERTY LIMITS DELINEATION
DELINEATION OF PROPERTY LIMITS AS SHOWN ON THIS DWG DOES NOT REPRESENT A "LEGAL SURVEY". KGS GROUP MAKES NO REPRESENTATION OR WARRANTY AS TO THE ACCURACY OF PROPERTY LIMITS DELINEATED ON THIS DWG, NOR ON THE DIMENSIONAL ACCURACY OF DWG FEATURES RELATIVE TO THOSE PROPERTY LIMITS.

WARNING
IF POWER EQUIPMENT OR EXPLOSIVES ARE TO BE USED FOR EXCAVATION ON THIS PROJECT THE CONTRACTOR MUST:
1) NOTIFY THE GAS COMPANY OF THE PROPOSED LOCATION OF EXCAVATION.
2) TAKE PRECAUTION TO AVOID DAMAGE TO GAS COMPANY INSTALLATIONS.
SEE PROVINCIAL REGULATION 210/72 FOR DETAILS

LOCATION APPROVED UNDERGROUND STRUCTURES
SUPV. U/G STRUCTURES COMMITTEE DATE
NOTE:
LOCATION OF UNDERGROUND STRUCTURES AS SHOWN ARE BASED ON THE BEST INFORMATION AVAILABLE BUT NO GUARANTEE IS GIVEN THAT ALL EXISTING UTILITIES ARE SHOWN OR THAT THE GIVEN LOCATIONS ARE EXACT. CONFIRMATION OF EXISTENCE AND EXACT LOCATION OF ALL SERVICES MUST BE OBTAINED FROM THE INDIVIDUAL UTILITIES BEFORE PROCEEDING WITH CONSTRUCTION.

VERTICAL DATUM: CGVD28 (HT2.0 Geoid)
HORIZONTAL DATUM: NAD83 (June 1990), Zone 14

NO.	REVISIONS	DATE (YYYY/MM/DD)	BY
A	ISSUED FOR RFQ	2024/01/31	GLG

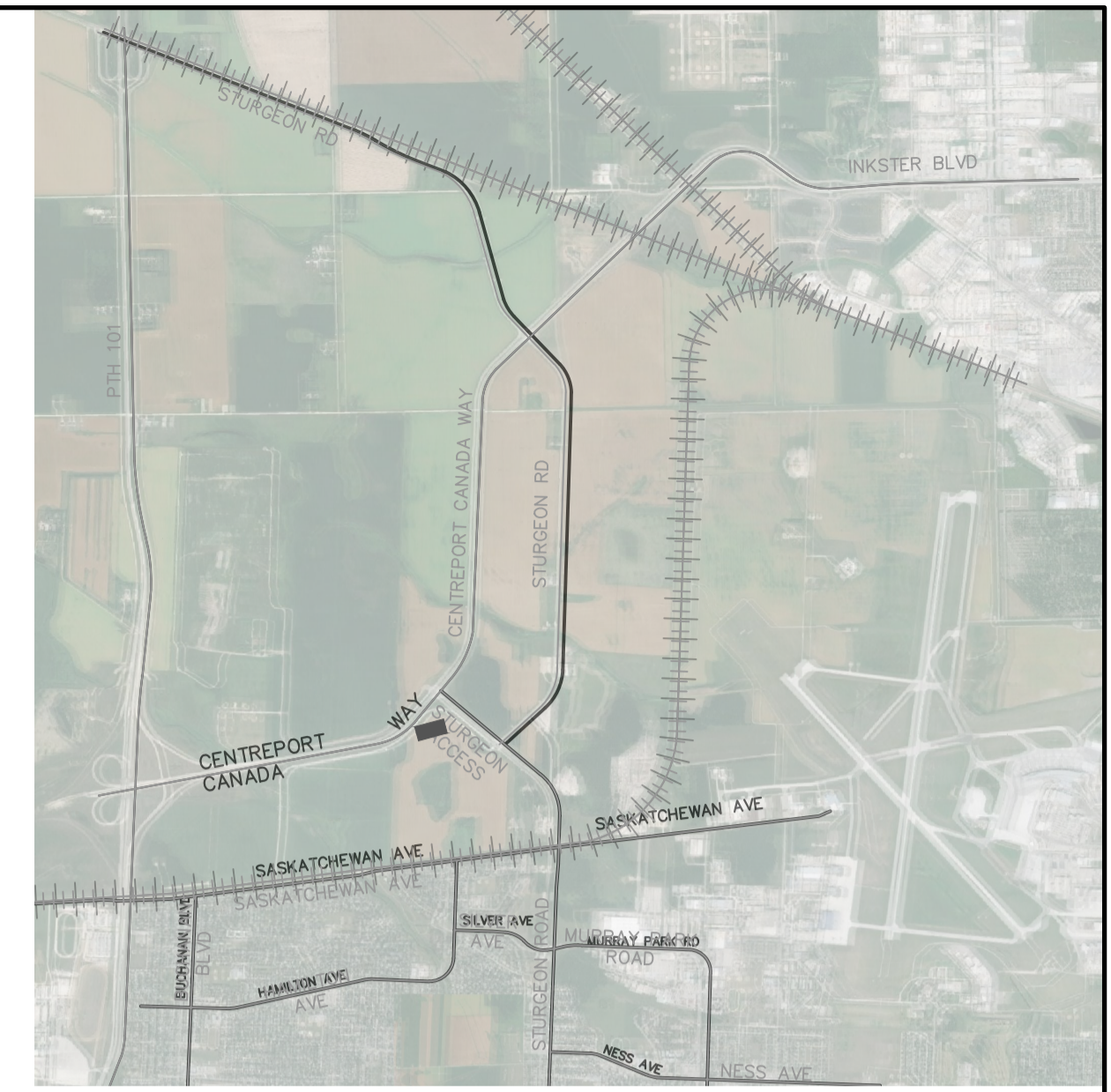
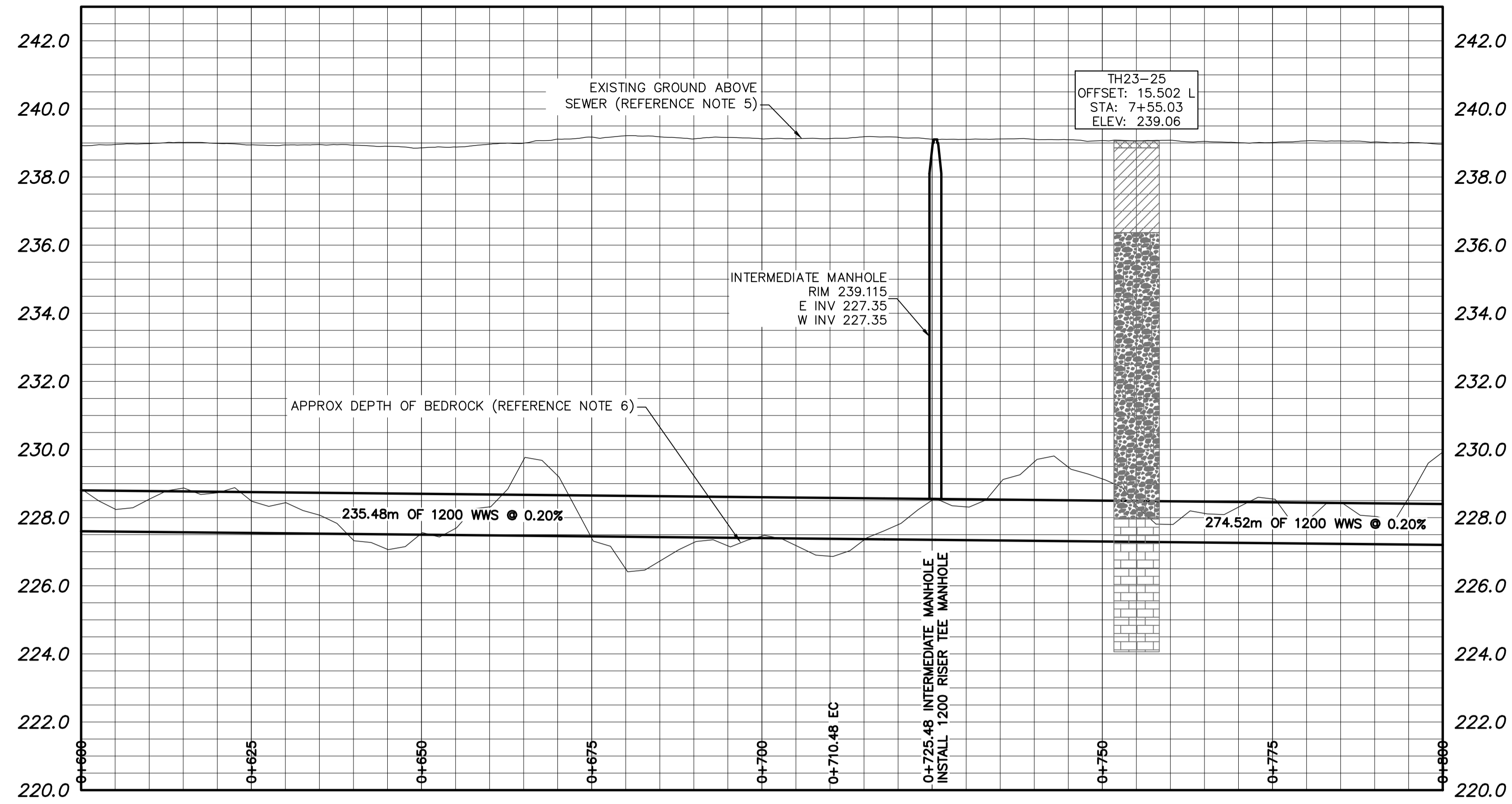
KGS GROUP		AE Associated Engineering	
DESIGNED BY	NGV	CHECKED BY	
DRAWN BY	GLG	APPROVED BY	
SCALE:	HORIZONTAL 1:500 VERTICAL 1:50	RELEASED FOR CONSTRUCTION	
DATE	2024 01 30	DATE	

ENGINEER'S SEAL
CONSULTANT DRAWING NUMBER
C-3-104

THE CITY OF WINNIPEG
WATER AND WASTE DEPARTMENT
ENGINEERING SERVICES DIVISION

CENTREPORT SOUTH REGIONAL WATER AND WASTEWATER
SERVICING - PHASE 1A (CONTRACT 3)
CENTREPORT CANADA WAY
STA 0+360 TO STA 0+600

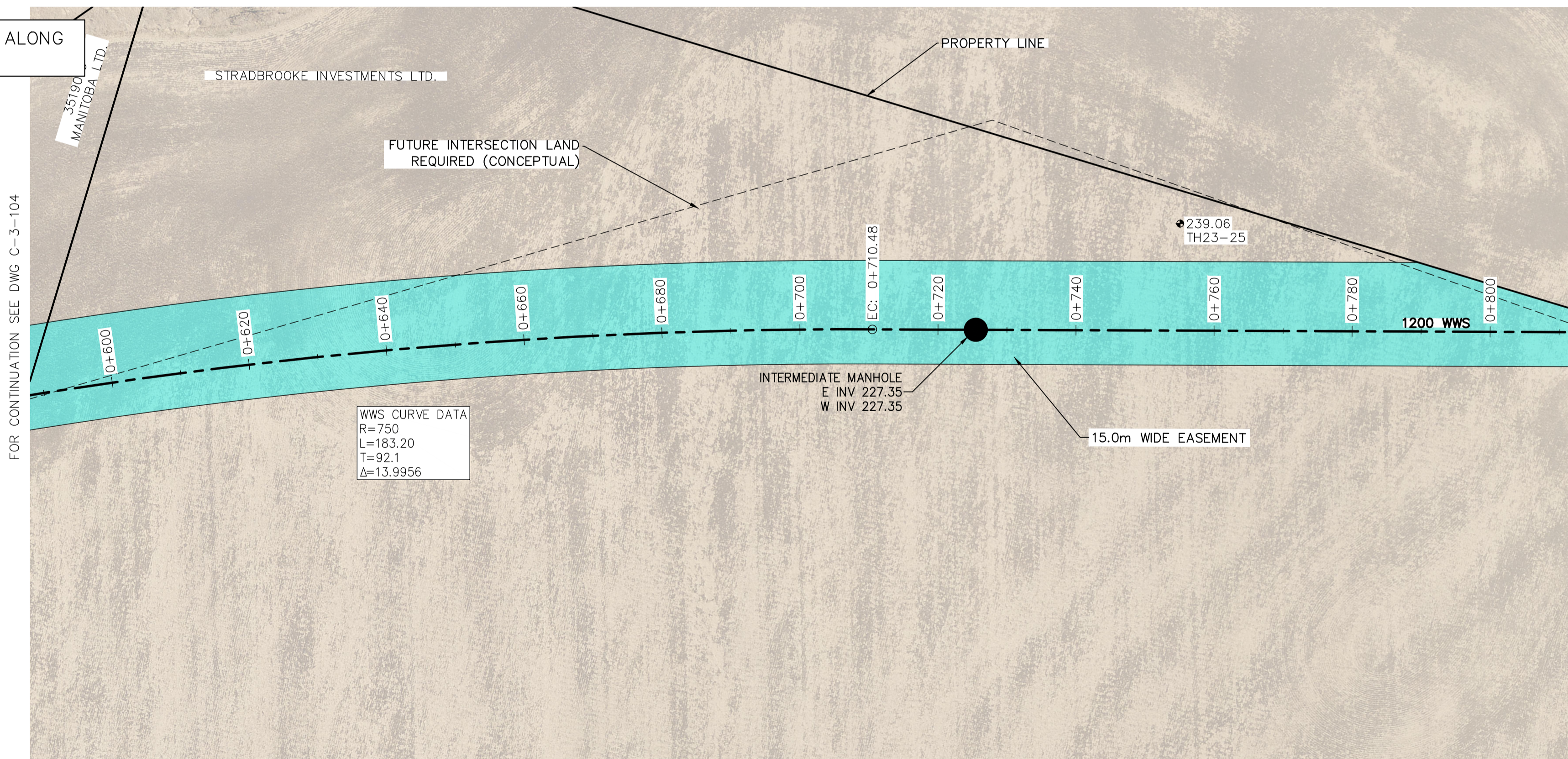
SHEET 4 OF 8
CITY DRAWING NUMBER
XX-XXXX



KEY PLAN
SCALE: 1:50,000

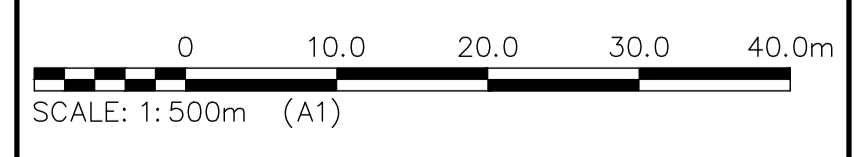
- NOTES:
- ALL UTILITIES SHOWN ON DRAWINGS ARE APPROXIMATE ONLY. LOCATIONS OF ALL UTILITIES TO BE CONFIRMED IN FIELD BY THE CONTRACTOR.
 - INSTALL NEW SEWER BY MICROTUNNELLING METHODS, UNLESS OTHERWISE NOTED.
 - ALL SIZING FOR SHAFTS ARE SHOWN FOR PLANNING PURPOSES ONLY. CONTRACTOR TO DESIGN AND SIZE SHAFTS AS REQUIRED BASED ON THEIR SUPPORT OF EXCAVATION METHODOLOGY AND TO ACCOMMODATE THE PERMANENT STRUCTURES IDENTIFIED.
 - FURTHER TO NOTE 3, THE CONTRACTOR IS REQUIRED TO REMOVE SUPPORT OF EXCAVATION SYSTEM TO A MINIMUM OF 3.0 M BELOW SURFACE.
 - THE EXISTING GROUND ELEVATIONS SHOWN ON THE DRAWINGS ARE BASED ON LIDAR DATA OBTAINED NOV 2020.
 - THE APPROXIMATE DEPTH OF BEDROCK ELEVATIONS SHOWN ON THE DRAWINGS IS BASED ON THE GEOPHYSICAL SEISMIC REFRACTION INVESTIGATIONS CARRIED OUT AT THE SITE. CONTRACTOR TO REFERENCE THE GEOTECHNICAL BASELINE REPORT (GBR) PROVIDED IN THE CONTRACT DOCUMENTS FOR A SUMMARY OF THE ANTICIPATED SUBSURFACE CONDITIONS ALONG THE INTERCEPTOR SEWER ALIGNMENT.
 - CONTRACTOR TO RESTORE SITE TO PRE-CONSTRUCTION CONDITION FOLLOWING COMPLETION OF CONSTRUCTION.
 - ALL PIPES TO BE INSTALLED WITH LOW FLOW CHANNEL SEE DETAIL C108.
 - PIPE TO BE REINFORCED CONCRETE JACKING PIPES DESIGNED BY CONTRACTOR TO ASCE 27-17 DIRECT DESIGN.

NOTE: CHAINAGES SHOWN ARE ALONG CL OF PROPOSED WWS



WWS CURVE DATA
R=750
L=183.20
T=92.1
Δ=13.9956

PRELIMINARY
NOT TO BE USED FOR CONSTRUCTION



WHOLE NUMBERS INDICATE MILLIMETRES
DECIMALIZED NUMBERS INDICATE METRES

PROPERTY LIMITS DELINEATION
DELINEATION OF PROPERTY LIMITS AS SHOWN ON THIS DWG DOES NOT REPRESENT A "LEGAL SURVEY". KGS GROUP MAKES NO REPRESENTATION OR WARRANTY AS TO THE ACCURACY OF PROPERTY LIMITS DELINEATED ON THIS DWG, NOR ON THE DIMENSIONAL ACCURACY OF DWG FEATURES RELATIVE TO THOSE PROPERTY LIMITS.

WARNING
IF POWER EQUIPMENT OR EXPLOSIVES ARE TO BE USED FOR EXCAVATION ON THIS PROJECT THE CONTRACTOR MUST:
1) NOTIFY THE GAS COMPANY OF THE PROPOSED LOCATION OF EXCAVATION.
2) TAKE PRECAUTION TO AVOID DAMAGE TO GAS COMPANY INSTALLATIONS.
SEE PROVINCIAL REGULATION 210/72 FOR DETAILS

LOCATION APPROVED UNDERGROUND STRUCTURES
SUPV. U/G STRUCTURES COMMITTEE DATE
NOTE:
LOCATION OF UNDERGROUND STRUCTURES AS SHOWN ARE BASED ON THE BEST INFORMATION AVAILABLE BUT NO GUARANTEE IS GIVEN THAT ALL EXISTING UTILITIES ARE SHOWN OR THAT THE GIVEN LOCATIONS ARE EXACT. CONFIRMATION OF EXISTENCE AND EXACT LOCATION OF ALL SERVICES MUST BE OBTAINED FROM THE INDIVIDUAL UTILITIES BEFORE PROCEEDING WITH CONSTRUCTION.

VERTICAL DATUM: CGV028 (HT2.0 Geoid)	
HORIZONTAL DATUM: NAD83 (June 1990), Zone 14	
NO.	REVISIONS
A	ISSUED FOR RFQ
DATE	2024/01/31
DATE (YYYY/MM/DD)	BY

KGS GROUP		AE Associated Engineering	
DESIGNED BY	NGV	CHECKED BY	
DRAWN BY	GLG	APPROVED BY	
SCALE:	HORIZONTAL 1:500	RELEASED FOR CONSTRUCTION	
	VERTICAL 1:50	DATE	2024 01 30
DATE	2024 01 30	DATE	

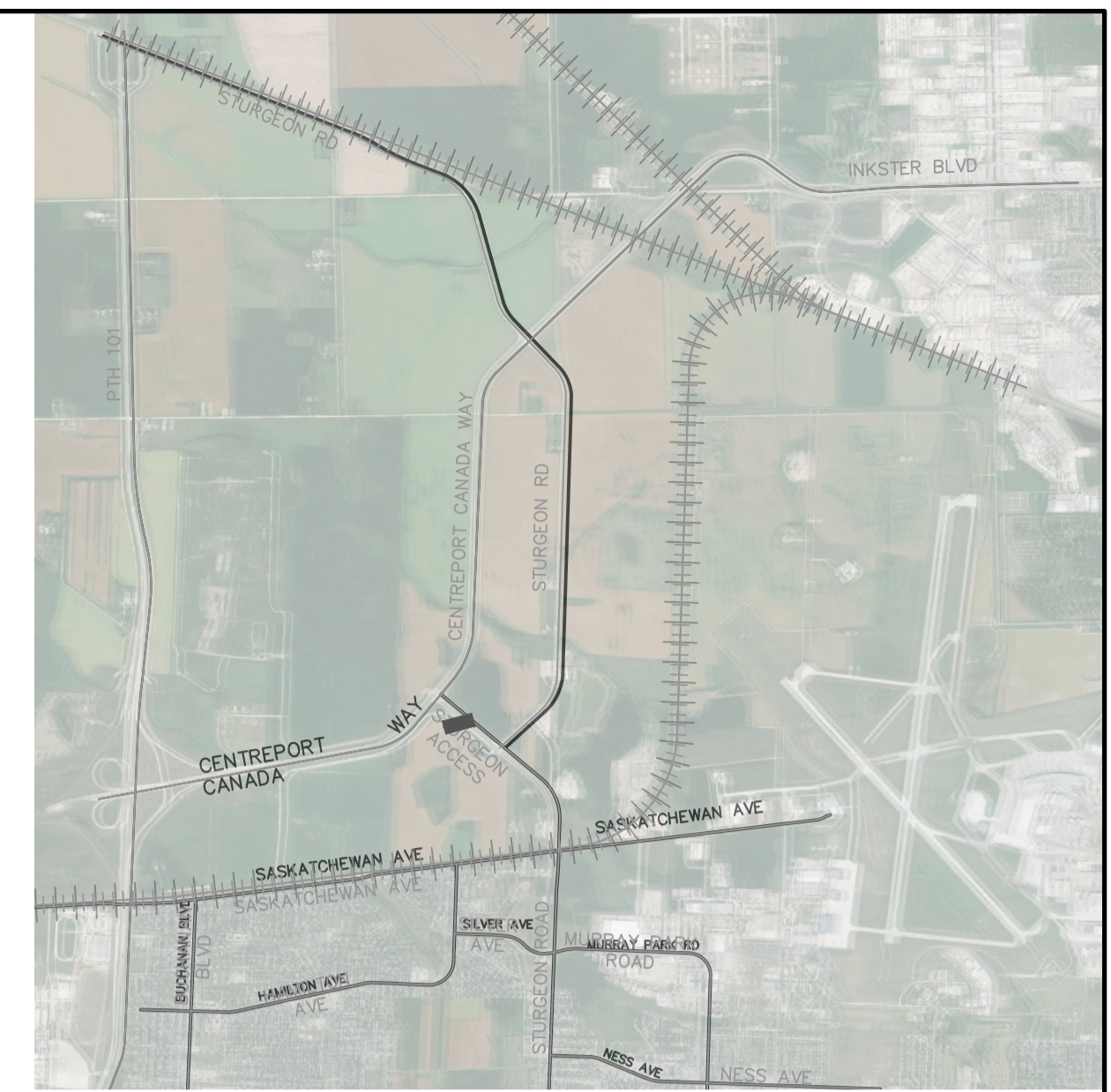
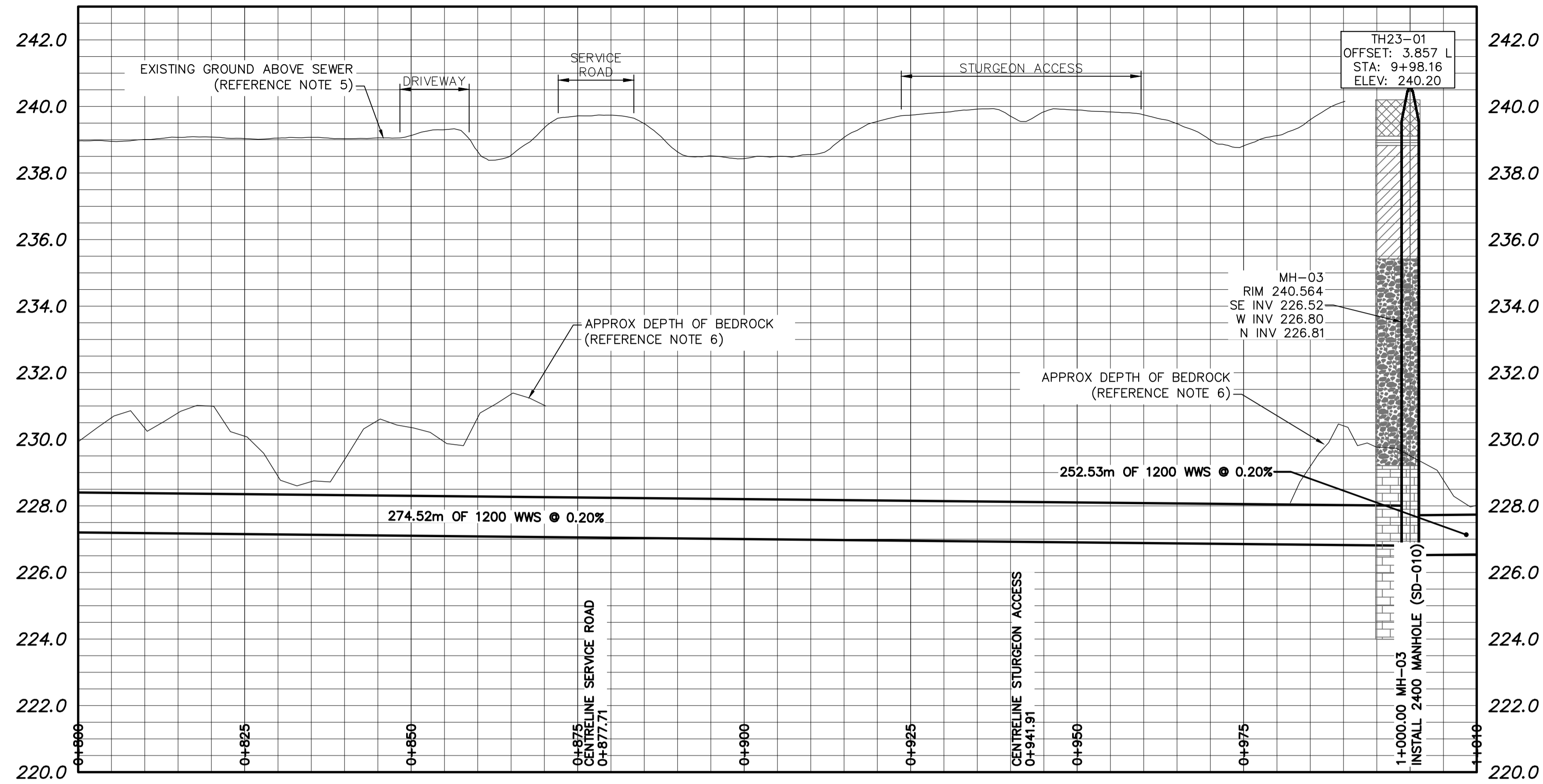
ENGINEER'S SEAL
CONSULTANT DRAWING NUMBER
C-3-105

THE CITY OF WINNIPEG
WATER AND WASTE DEPARTMENT
ENGINEERING SERVICES DIVISION

CENTREPORT SOUTH REGIONAL WATER AND WASTEWATER SERVICING - PHASE 1A (CONTRACT 3)
CENTREPORT CANADA WAY
STA 0+600 TO STA 0+800

SHEET 5 OF 8
CITY DRAWING NUMBER
XX-XXXX

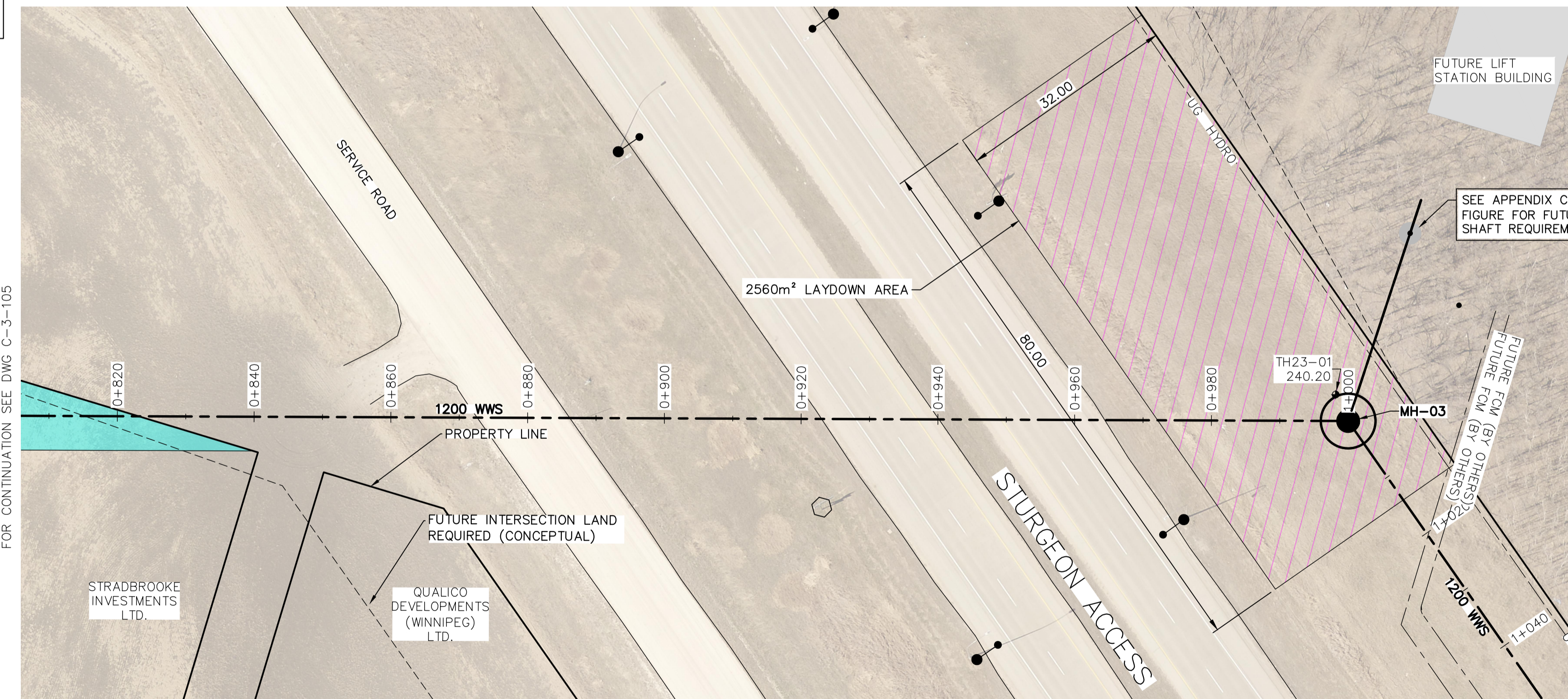
FOR INDEX SEE C-3-102



NOTES:

- ALL UTILITIES SHOWN ON DRAWINGS ARE APPROXIMATE ONLY. LOCATIONS OF ALL UTILITIES TO BE CONFIRMED IN FIELD BY THE CONTRACTOR.
- INSTALL NEW SEWER BY MICROTUNNELLING METHODS, UNLESS OTHERWISE NOTED.
- ALL SIZING FOR SHAFTS ARE SHOWN FOR PLANNING PURPOSES ONLY. CONTRACTOR TO DESIGN AND SIZE SHAFTS AS REQUIRED BASED ON THEIR SUPPORT OF EXCAVATION METHODOLOGY AND TO ACCOMMODATE THE PERMANENT STRUCTURES IDENTIFIED.
- FURTHER TO NOTE 3, THE CONTRACTOR IS REQUIRED TO REMOVE SUPPORT OF EXCAVATION SYSTEM TO A MINIMUM OF 3.0 M BELOW SURFACE.
- THE EXISTING GROUND ELEVATIONS SHOWN ON THE DRAWINGS ARE BASED ON LIDAR DATA OBTAINED NOV 2020.
- THE APPROXIMATE DEPTH OF BEDROCK ELEVATIONS SHOWN ON THE DRAWINGS IS BASED ON THE GEOPHYSICAL SEISMIC REFRACTION INVESTIGATIONS CARRIED OUT AT THE SITE. CONTRACTOR TO REFERENCE THE GEOTECHNICAL BASELINE REPORT (GBR) PROVIDED IN THE CONTRACT DOCUMENTS FOR A SUMMARY OF THE ANTICIPATED SUBSURFACE CONDITIONS ALONG THE INTERCEPTOR SEWER ALIGNMENT.
- CONTRACTOR TO RESTORE SITE TO PRE-CONSTRUCTION CONDITION FOLLOWING COMPLETION OF CONSTRUCTION.
- ALL PIPES TO BE INSTALLED WITH LOW FLOW CHANNEL SEE DETAIL C108.
- PIPE TO BE REINFORCED CONCRETE JACKING PIPES DESIGNED BY CONTRACTOR TO ASCE 27-17 DIRECT DESIGN.

NOTE: CHAINAGES SHOWN ARE ALONG CL OF PROPOSED WWS



FOR CONTINUATION SEE DWG C-3-107

FOR INDEX SEE C-3-102

PRELIMINARY
NOT TO BE USED FOR CONSTRUCTION



WHOLE NUMBERS INDICATE MILLIMETRES
DECIMALIZED NUMBERS INDICATE METRES

PROPERTY LIMITS DELINEATION
DELINEATION OF PROPERTY LIMITS AS SHOWN ON THIS DWG DOES NOT REPRESENT A "LEGAL SURVEY". KGS GROUP MAKES NO REPRESENTATION OR WARRANTY AS TO THE ACCURACY OF PROPERTY LIMITS DELINEATED ON THIS DWG, NOR ON THE DIMENSIONAL ACCURACY OF DWG FEATURES RELATIVE TO THOSE PROPERTY LIMITS.

WARNING
IF POWER EQUIPMENT OR EXPLOSIVES ARE TO BE USED FOR EXCAVATION ON THIS PROJECT THE CONTRACTOR MUST:
1) NOTIFY THE GAS COMPANY OF THE PROPOSED LOCATION OF EXCAVATION.
2) TAKE PRECAUTION TO AVOID DAMAGE TO GAS COMPANY INSTALLATIONS.
SEE PROVINCIAL REGULATION 210/72 FOR DETAILS

LOCATION APPROVED UNDERGROUND STRUCTURES
SUPV. U/G STRUCTURES COMMITTEE DATE
NOTE:
LOCATION OF UNDERGROUND STRUCTURES AS SHOWN ARE BASED ON THE BEST INFORMATION AVAILABLE BUT NO GUARANTEE IS GIVEN THAT ALL EXISTING UTILITIES ARE SHOWN OR THAT THE GIVEN LOCATIONS ARE EXACT. CONFIRMATION OF EXISTENCE AND EXACT LOCATION OF ALL SERVICES MUST BE OBTAINED FROM THE INDIVIDUAL UTILITIES BEFORE PROCEEDING WITH CONSTRUCTION.

VERTICAL DATUM: CGV028 (HT2.0 Geoid)	
HORIZONTAL DATUM: NAD83 (June 1990), Zone 14	
NO.	REVISIONS
A	ISSUED FOR RFQ
DATE	2024/01/31
BY	GLG
DATE	2024 01 30

KGS GROUP **Associated Engineering**

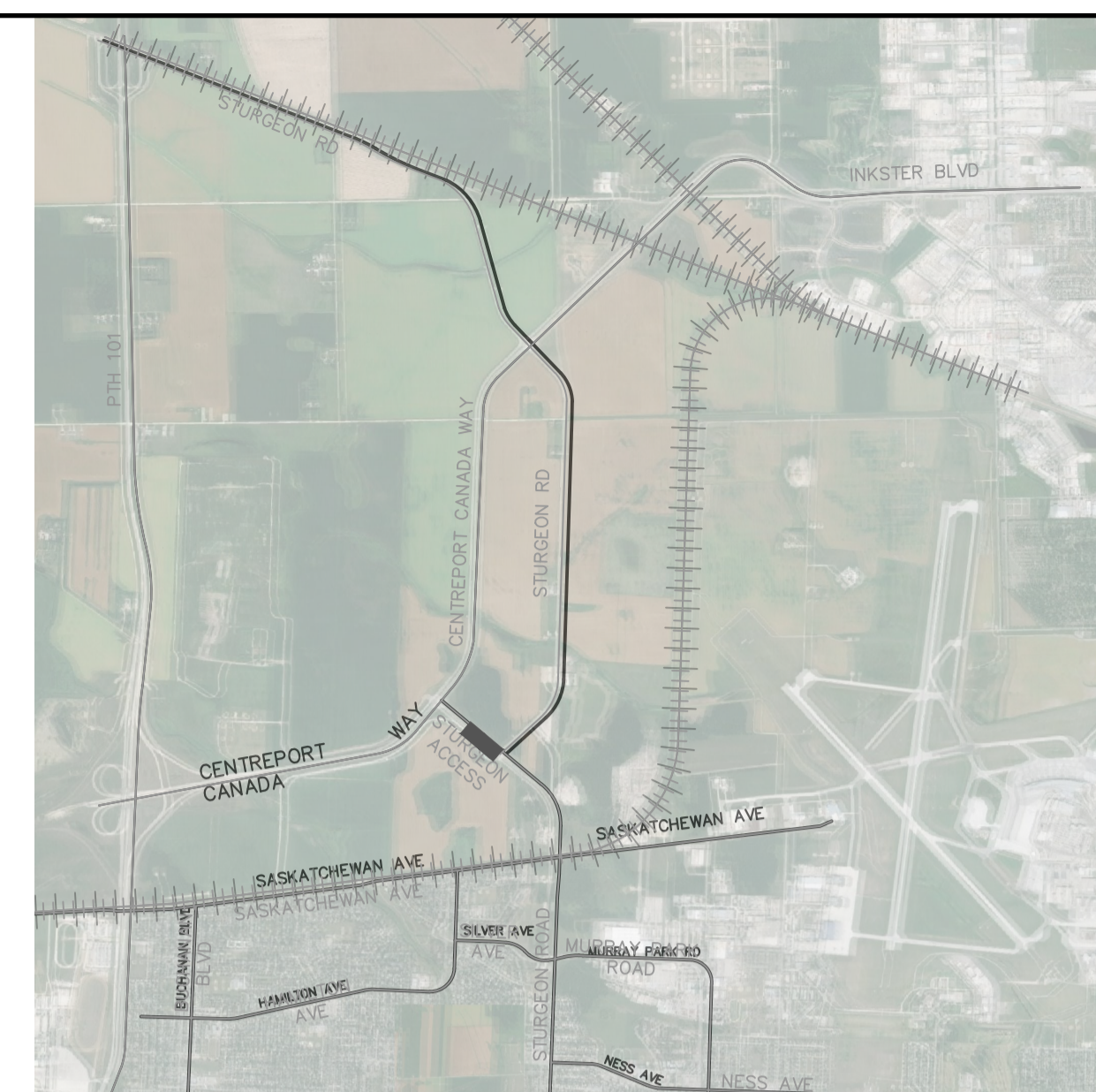
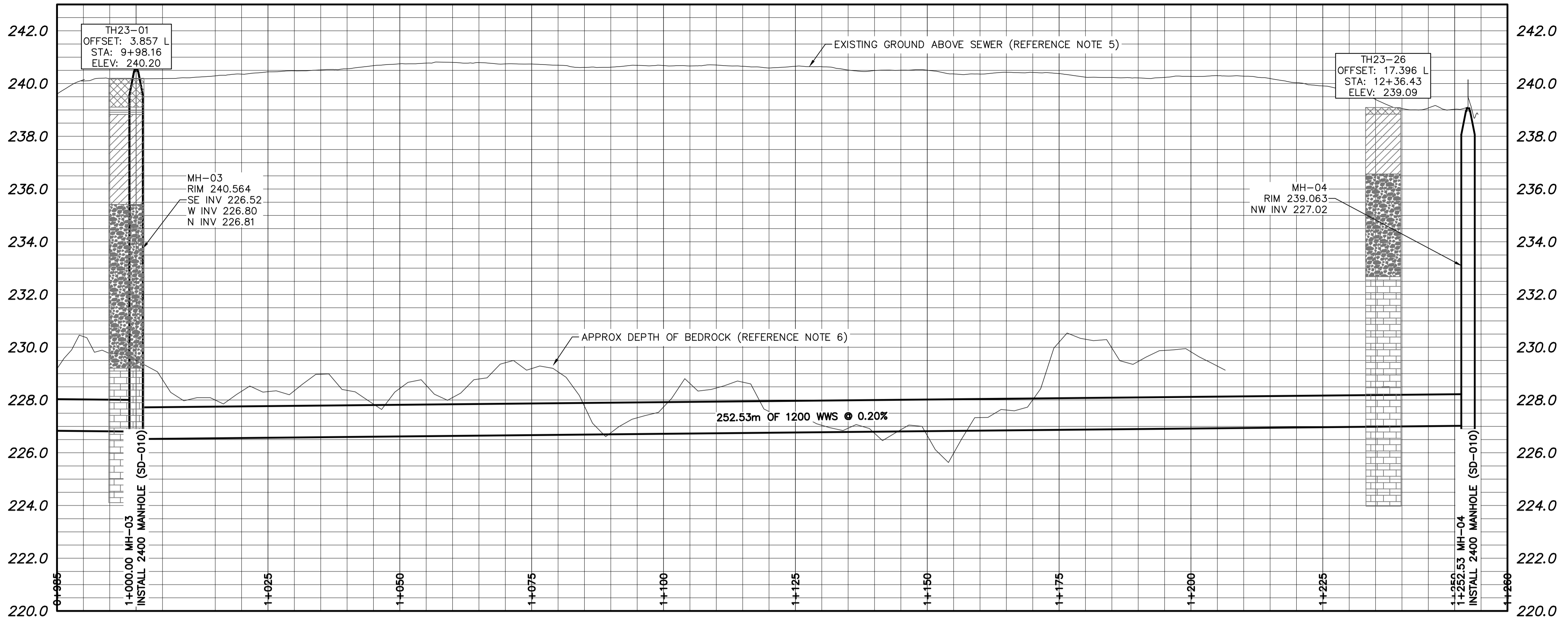
DESIGNED BY: NGV
CHECKED BY: [Signature]
DRAWN BY: GLG
APPROVED BY: [Signature]
SCALE: HORIZONTAL 1:500, VERTICAL 1:50
DATE: 2024 01 30

ENGINEER'S SEAL
CONSULTANT DRAWING NUMBER: C-3-106

THE CITY OF WINNIPEG
WATER AND WASTE DEPARTMENT
ENGINEERING SERVICES DIVISION

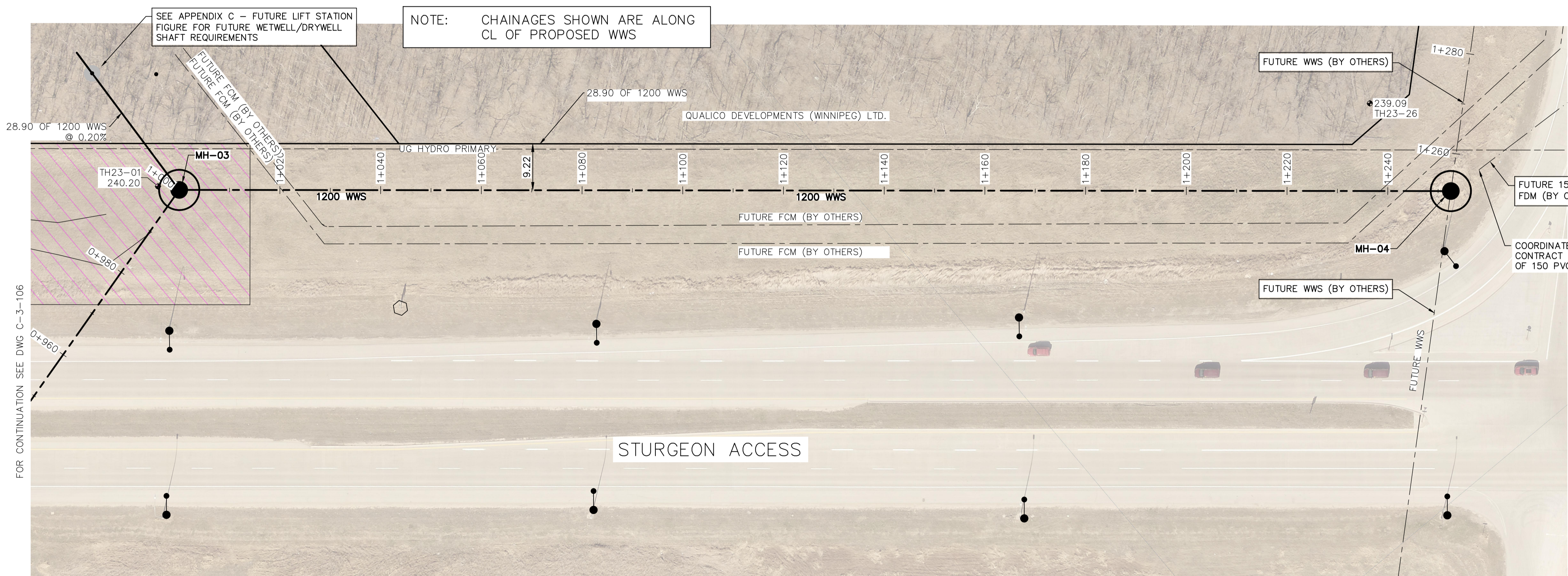
CENTREPORT SOUTH REGIONAL WATER AND WASTEWATER SERVICING - PHASE 1A (CONTRACT 3)
CENTREPORT CANADA WAY
STA 0+800 TO STA 1+010

SHEET 6 OF 8
CITY DRAWING NUMBER: XX-XXXX



KEY PLAN
SCALE: 1:50,000

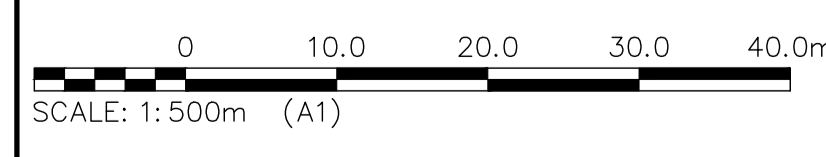
- NOTES:
- ALL UTILITIES SHOWN ON DRAWINGS ARE APPROXIMATE ONLY. LOCATIONS OF ALL UTILITIES TO BE CONFIRMED IN FIELD BY THE CONTRACTOR.
 - INSTALL NEW SEWER BY MICROTUNNELLING METHODS, UNLESS OTHERWISE NOTED.
 - ALL SIZING FOR SHAFTS ARE SHOWN FOR PLANNING PURPOSES ONLY. CONTRACTOR TO DESIGN AND SIZE SHAFTS AS REQUIRED BASED ON THEIR SUPPORT OF EXCAVATION METHODOLOGY AND TO ACCOMMODATE THE PERMANENT STRUCTURES IDENTIFIED.
 - FURTHER TO NOTE 3, THE CONTRACTOR IS REQUIRED TO REMOVE SUPPORT OF EXCAVATION SYSTEM TO A MINIMUM OF 3.0 M BELOW SURFACE.
 - THE EXISTING GROUND ELEVATIONS SHOWN ON THE DRAWINGS ARE BASED ON LIDAR DATA OBTAINED NOV 2020.
 - THE APPROXIMATE DEPTH OF BEDROCK ELEVATIONS SHOWN ON THE DRAWINGS IS BASED ON THE GEOPHYSICAL SEISMIC REFRACTION INVESTIGATIONS CARRIED OUT AT THE SITE. CONTRACTOR TO REFERENCE THE GEOTECHNICAL BASELINE REPORT (GBR) PROVIDED IN THE CONTRACT DOCUMENTS FOR A SUMMARY OF THE ANTICIPATED SUBSURFACE CONDITIONS ALONG THE INTERCEPTOR SEWER ALIGNMENT.
 - CONTRACTOR TO RESTORE SITE TO PRE-CONSTRUCTION CONDITION FOLLOWING COMPLETION OF CONSTRUCTION.
 - ALL PIPES TO BE INSTALLED WITH LOW FLOW CHANNEL SEE DETAIL C108.
 - PIPE TO BE REINFORCED CONCRETE JACKING PIPES DESIGNED BY CONTRACTOR TO ASCE 27-17 DIRECT DESIGN.



FOR CONTINUATION SEE DWG C-3-106

FOR INDEX SEE
C-3-102

PRELIMINARY
NOT TO BE USED FOR CONSTRUCTION



WHOLE NUMBERS INDICATE MILLIMETRES
DECIMALIZED NUMBERS INDICATE METRES

PROPERTY LIMITS DELINEATION
DELINEATION OF PROPERTY LIMITS AS SHOWN ON THIS DWG DOES NOT REPRESENT A "LEGAL SURVEY". KGS GROUP MAKES NO REPRESENTATION OR WARRANTY AS TO THE ACCURACY OF PROPERTY LIMITS DELINEATED ON THIS DWG, NOR ON THE DIMENSIONAL ACCURACY OF DWG FEATURES RELATIVE TO THOSE PROPERTY LIMITS.

WARNING
IF POWER EQUIPMENT OR EXPLOSIVES ARE TO BE USED FOR EXCAVATION ON THIS PROJECT THE CONTRACTOR MUST:
1) NOTIFY THE GAS COMPANY OF THE PROPOSED LOCATION OF EXCAVATION.
2) TAKE PRECAUTION TO AVOID DAMAGE TO GAS COMPANY INSTALLATIONS.
SEE PROVINCIAL REGULATION 210/72 FOR DETAILS

LOCATION APPROVED UNDERGROUND STRUCTURES
SUPV. U/G STRUCTURES COMMITTEE DATE
NOTE:
LOCATION OF UNDERGROUND STRUCTURES AS SHOWN ARE BASED ON THE BEST INFORMATION AVAILABLE BUT NO GUARANTEE IS GIVEN THAT ALL EXISTING UTILITIES ARE SHOWN OR THAT THE GIVEN LOCATIONS ARE EXACT. CONFIRMATION OF EXISTENCE AND EXACT LOCATION OF ALL SERVICES MUST BE OBTAINED FROM THE INDIVIDUAL UTILITIES BEFORE PROCEEDING WITH CONSTRUCTION.

VERTICAL DATUM: CGVD28 (HT2.0 Geoid)	
HORIZONTAL DATUM: NAD83 (June 1990), Zone 14	
NO.	REVISIONS
A	ISSUED FOR RFQ
DATE	DATE
2024/01/31	2024 01 30
GLG	BY

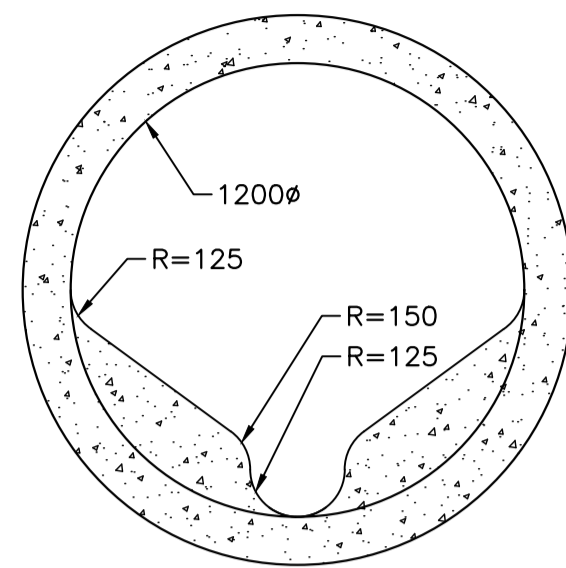
KGS GROUP		AE Associated Engineering	
DESIGNED BY	NGV	CHECKED BY	
DRAWN BY	GLG	APPROVED BY	
SCALE:	HORIZONTAL 1:500	RELEASED FOR CONSTRUCTION	
	VERTICAL 1:50	DATE	DATE
		2024 01 30	
PLOT DATE: 2024 01 30		CONTRACT NUMBER: #	

ENGINEER'S SEAL
CONSULTANT DRAWING NUMBER
C-3-107

THE CITY OF WINNIPEG
WATER AND WASTE DEPARTMENT
ENGINEERING SERVICES DIVISION

CENTREPORT SOUTH REGIONAL WATER AND WASTEWATER
SERVICING - PHASE 1A (CONTRACT 3)
STURGEON ACCESS
STA 0+990 TO STA 1+270

SHEET 7 OF 8
CITY DRAWING NUMBER
XX-XXXX



1200MM DIA. WWS - PROPOSED LOW FLOW CHANNEL PIPE SECTION
 NOT TO SCALE

FOR INDEX SEE
 C-3-102

PRELIMINARY
 NOT TO BE USED FOR CONSTRUCTION

WHOLE NUMBERS INDICATE MILLIMETRES
 DECIMALIZED NUMBERS INDICATE METRES

PROPERTY LIMITS DELINEATION
 DELINEATION OF PROPERTY LIMITS AS SHOWN ON THIS DWG DOES NOT REPRESENT A "LEGAL SURVEY". KGS GROUP MAKES NO REPRESENTATION OR WARRANTY AS TO THE ACCURACY OF PROPERTY LIMITS DELINEATED ON THIS DWG, NOR ON THE DIMENSIONAL ACCURACY OF DWG FEATURES RELATIVE TO THOSE PROPERTY LIMITS.

WARNING
 IF POWER EQUIPMENT OR EXPLOSIVES ARE TO BE USED FOR EXCAVATION ON THIS PROJECT THE CONTRACTOR MUST:
 1) NOTIFY THE GAS COMPANY OF THE PROPOSED LOCATION OF EXCAVATION.
 2) TAKE PRECAUTION TO AVOID DAMAGE TO GAS COMPANY INSTALLATIONS.
 SEE PROVINCIAL REGULATION 210/72 FOR DETAILS

LOCATION APPROVED UNDERGROUND STRUCTURES
 SUPV. U/G STRUCTURES COMMITTEE DATE
 NOTE:
 LOCATION OF UNDERGROUND STRUCTURES AS SHOWN ARE BASED ON THE BEST INFORMATION AVAILABLE BUT NO GUARANTEE IS GIVEN THAT ALL EXISTING UTILITIES ARE SHOWN OR THAT THE GIVEN LOCATIONS ARE EXACT. CONFIRMATION OF EXISTENCE AND EXACT LOCATION OF ALL SERVICES MUST BE OBTAINED FROM THE INDIVIDUAL UTILITIES BEFORE PROCEEDING WITH CONSTRUCTION.

VERTICAL DATUM: CGVD28 (HT2.0 Geoid)			
HORIZONTAL DATUM: NAD83 (June 1990), Zone 14			
NO.	REVISIONS	DATE (YYYY/MM/DD)	BY
A	ISSUED FOR RFQ	2024/01/31	GLG

KGS GROUP

DESIGNED BY	NGV	CHECKED BY	.
DRAWN BY	GLG	APPROVED BY	.
SCALE:		RELEASED FOR CONSTRUCTION	
HORIZONTAL	1:500	DATE	2024 01 30
VERTICAL	1:50	DATE	.

ENGINEER'S SEAL
 CONSULTANT DRAWING NUMBER
 C-3-108

THE CITY OF WINNIPEG
 WATER AND WASTE DEPARTMENT
 ENGINEERING SERVICES DIVISION

CENTREPORT SOUTH REGIONAL WATER AND WASTEWATER SERVICING - PHASE 1A (CONTRACT 3)
MISCELLANEOUS DETAILS
 SHEET 1

SHEET 8 OF 8
 CITY DRAWING NUMBER
 XX-XXXX