

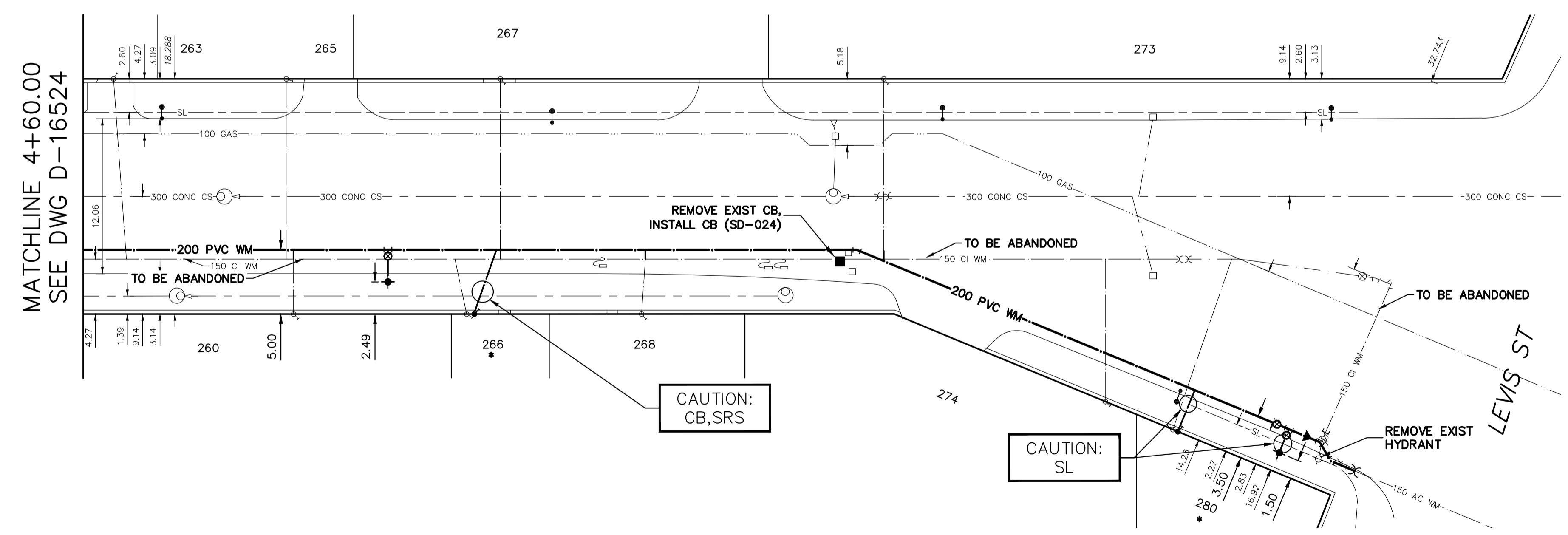
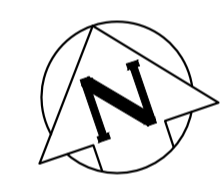
**WATER SERVICE INFORMATION**

ADDRESS	SIZE (mm) MATERIAL (STREET)	SIZE (mm) MATERIAL (PROP.)	SHORT & LONG MEASUREMENT	CORP LOCATION	REMARKS
260 TALBOT ST RESIDENTIAL	20 CU	38 CU	8.76 WEL BLDG 101.962 EEL BRAZIER ST	OPP OF S/C	RECONNECT SERVICE
263/265 TALBOT ST RESIDENTIAL	20 CU	12 CU	8.32 EWL HSE 84.824 WW LEVIS ST (SEE NOTES)	OPP OF S/C	RECONNECT SERVICE
266 TALBOT ST RESIDENTIAL	12 LEAD	12 LEAD	67.043 WW LEVIS ST (SEE NOTES)	0.9 W OF S/C	RENEW TO R W/20 CU
267 TALBOT ST RESIDENTIAL	38 CU	38 CU	7.54 EWL BLDG 77.833 WW LEVIS ST (SEE NOTES)	OPP OF S/C	RECONNECT SERVICE
268 TALBOT ST RESIDENTIAL	20 CU	20 CU	OPP EL HSE 53.602 WW LEVIS ST (SEE NOTES)	0.3 E OF S/C	RECONNECT SERVICE
273 TALBOT ST RESIDENTIAL	50 CU	50 CU	5.72 EWL HSE 48.129 WW LEVIS ST (SEE NOTES)	OPP OF S/C	RECONNECT SERVICE
274 TALBOT ST RESIDENTIAL	20 CU	20 CU	1.84 WEL BLDG 18.951 WW LEVIS ST (SEE NOTES)	OPP OF S/C	RECONNECT SERVICE
280 TALBOT ST RESIDENTIAL	20 CU	20 CU	2.33 EWL BLDG 13.260 WW LEVIS ST (SEE NOTES)	5.0 E OF S/C	RENEW TO R W/20 CU PREVIOUSLY FROZEN

• SERVICES TO BE RENEWED TO R. ALL OTHERS TO BE RECONNECTED

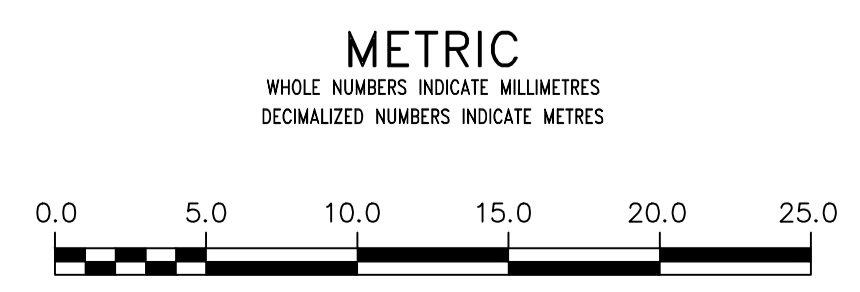
NOTE: CHAINAGES SHOWN ARE ALONG  
S. R. OF TALBOT AVE

TALBOT AVENUE



FOR INDEX SEE  
D-16515

NOTE: ALL VALVES TO BE INSTALLED  
COUNTERCLOCKWISE TO CLOSE



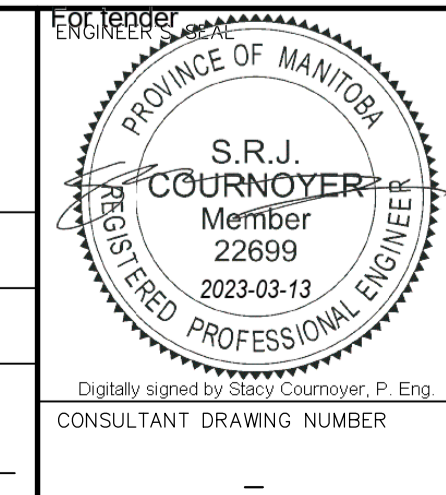
**WARNING**  
IF POWER EQUIPMENT OR EXPLOSIVES  
ARE TO BE USED FOR EXCAVATION ON  
THIS PROJECT THE CONTRACTOR MUST:  
1) NOTIFY THE GAS COMPANY OF THE  
PROPOSED LOCATION OF EXCAVATION.  
2) TAKE PRECAUTION TO AVOID DAMAGE  
TO GAS COMPANY INSTALLATIONS.  
SEE PROVINCIAL REGULATION 210/72 FOR DETAILS

**LOCATION APPROVED**  
UNDERGROUND STRUCTURES  
SUPV. U/G STRUCTURES COMMITTEE DATE  
NOTE:  
LOCATION OF UNDERGROUND STRUCTURES AS  
SHOWN ARE BASED ON THE BEST INFORMATION  
AVAILABLE BUT NO GUARANTEE IS GIVEN THAT ALL  
EXISTING UTILITIES ARE SHOWN OR THAT THE GIVEN  
LOCATIONS ARE EXACT. CONFIRMATION OF  
EXISTENCE AND EXACT LOCATION OF ALL  
UTILITIES MUST BE OBTAINED FROM THE INDIVIDUAL  
UTILITIES BEFORE PROCEEDING WITH CONSTRUCTION.

VERTICAL DATUM: CGVD28 (HT2.0 Geoid)  
HORIZONTAL DATUM: NAD83 (June 1990), Zone 14

NO.	REVISIONS	DATE	BY

DESIGNED BY	RG	CHECKED BY	SC
DRAWN BY	RS	APPROVED BY	KZ
SCALE:			
HORIZONTAL	1: 250		
VERTICAL	1: 50		
DATE	2023 03 06		
DATE	Mar 9, 2023		



**THE CITY OF WINNIPEG**  
WATER AND WASTE DEPARTMENT  
ENGINEERING DIVISION

2023 WATER MAIN RENEWALS  
CONTRACT 6  
TALBOT AVENUE  
85.5 E OF BRAZIER STREET TO  
LEVIS STREET

SHEET 12 OF 12  
CITY DRAWING NUMBER  
D-16525