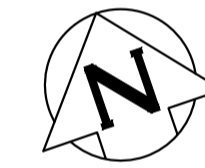


**WATER SERVICE INFORMATION**

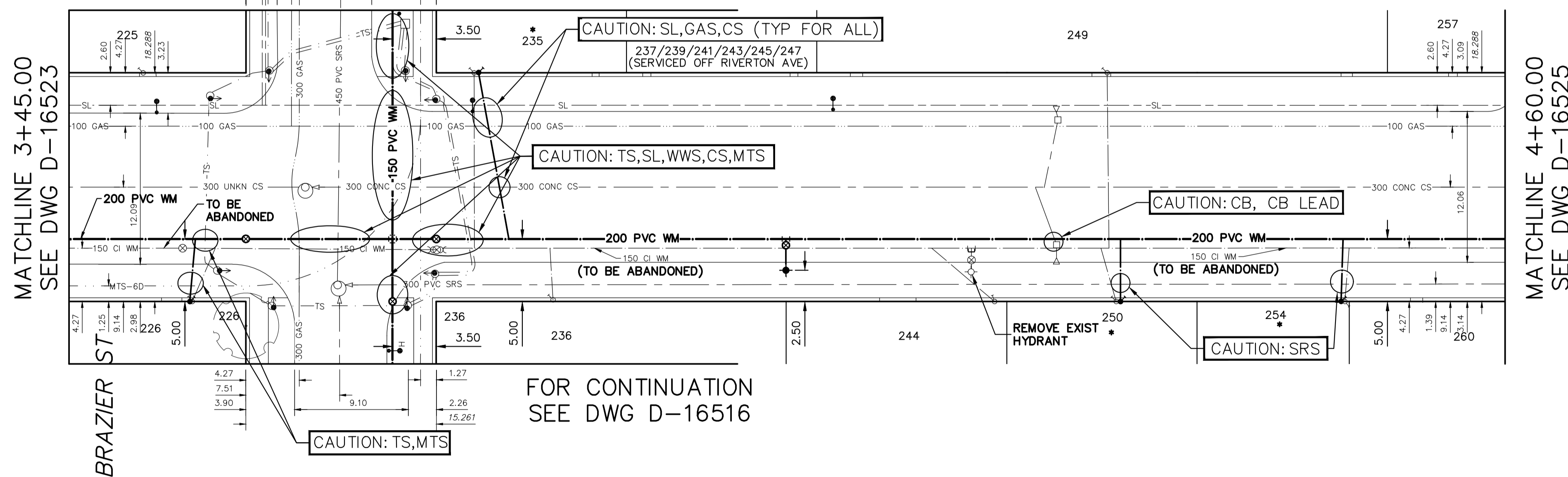
ADDRESS	SIZE (mm) MATERIAL (STREET)	SIZE (mm) MATERIAL (PROP.)	SHORT & LONG MEASUREMENT	CORP LOCATION	REMARKS
225 TALBOT ST	-	20	OPP EL BLDG	-	RECONNECT SERVICE
RESIDENTIAL	-	CU	8.260 W/L BRAZIER ST	-	-
* 226 TALBOT ST	12	20	2.45 EW. HSE	1.8 E OF S/C	RENEW TO R W/20 CU
RESIDENTIAL	LEAD	CU	4.296 W/L BRAZIER ST	-	-
* 235 TALBOT ST	12	12	0.75 W/L HSE	OPP OF S/C	RENEW TO R W/20 CU
RESIDENTIAL	LEAD	LEAD	3.305 EEL BRAZIER ST	-	-
236 TALBOT ST	50	50	7.78 EW. BLDG	0.5 W OF S/C	RECONNECT SERVICE
RESIDENTIAL	CU	CU	9.569 EEL BRAZIER ST	-	-
237 TALBOT ST	-	25	7.74 EW. BLDG	-	OUTSIDE LIMITS
RESIDENTIAL	-	CU	9.568 EEL BRAZIER ST	-	SHARED SERVICE OFF RIVERTON
239 TALBOT ST	-	-	7.05 EW. BLDG	15.3 E OF S/C	OUTSIDE LIMITS
RESIDENTIAL	-	-	25.787 EEL BRAZIER ST	-	SHARED SERVICE OFF RIVERTON
241 TALBOT ST	-	25	3.90 EW. BLDG	-	OUTSIDE LIMITS
RESIDENTIAL	-	CU	21.991 EEL BRAZIER ST	-	SHARED SERVICE OFF RIVERTON
243 TALBOT ST	-	25	3.90 EW. BLDG	-	OUTSIDE LIMITS
RESIDENTIAL	-	CU	21.991 EEL BRAZIER ST	-	SHARED SERVICE OFF RIVERTON
244 TALBOT ST	25	25	21.904 EW. BLDG	5.1 W OF S/C	RECONNECT SERVICE
RESIDENTIAL	CU	CU	44.708 EEL BRAZIER ST	-	-
245 TALBOT ST	-	25	3.90 EW. BLDG	-	OUTSIDE LIMITS
RESIDENTIAL	-	CU	21.991 EEL BRAZIER ST	-	SHARED SERVICE OFF RIVERTON
247 TALBOT ST	-	25	3.90 EW. BLDG	-	OUTSIDE LIMITS
RESIDENTIAL	-	CU	21.991 EEL BRAZIER ST	-	SHARED SERVICE OFF RIVERTON
249 TALBOT ST	38	38	19.38 EW. BLDG	OPP OF S/C	RECONNECT SERVICE
RESIDENTIAL	CU	CU	53.718 EEL BRAZIER ST	-	-
* 250 TALBOT ST	25	25	6.02 EW. BLDG	1.3 W OF S/C	RENEW TO R W/20 CU
RESIDENTIAL	LEAD	LEAD	54.444 EEL BRAZIER ST	-	-
* 254 TALBOT ST	12	20	OPP EL BLDG	0.4 E OF S/C	RENEW TO R W/20 CU
RESIDENTIAL	LEAD	CU	72.760 EEL BRAZIER ST	-	-
257 TALBOT ST	20	12	2.85 EEL HSE	0.9 E OF S/C	RECONNECT SERVICE
RESIDENTIAL	CU	CU	87.847 EEL BRAZIER ST	-	-
260 TALBOT ST	20	38	8.76 W/L BLDG	OPP OF S/C	RECONNECT SERVICE
RESIDENTIAL	CU	CU	101.962 EEL BRAZIER ST	-	-

\* SERVICES TO BE RENEWED TO R. ALL OTHERS TO BE RECONNECTED

NOTE: CHAINAGES SHOWN ARE ALONG S. R. OF TALBOT AVE

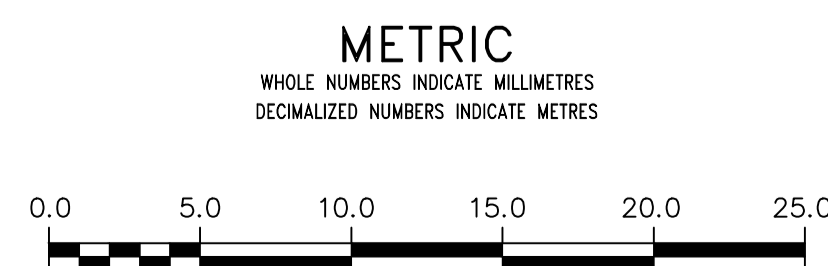


FOR CONTINUATION TALBOT AVENUE  
SEE DWG D-16517



FOR INDEX SEE D-16515

NOTE: ALL VALVES TO BE INSTALLED COUNTERCLOCKWISE TO CLOSE



**WARNING**  
IF POWER EQUIPMENT OR EXPLOSIVES ARE TO BE USED FOR EXCAVATION ON THIS PROJECT THE CONTRACTOR MUST:  
1) NOTIFY THE GAS COMPANY OF THE PROPOSED LOCATION OF EXCAVATION.  
2) TAKE PRECAUTION TO AVOID DAMAGE TO GAS COMPANY INSTALLATIONS.  
SEE PROVINCIAL REGULATION 210/72 FOR DETAILS

**LOCATION APPROVED**  
UNDERGROUND STRUCTURES  
SUPV. U/G STRUCTURES COMMITTEE DATE  
NOTE:  
LOCATION OF UNDERGROUND STRUCTURES AS SHOWN ARE BASED ON THE BEST INFORMATION AVAILABLE BUT NO GUARANTEE IS GIVEN THAT ALL EXISTING UTILITIES ARE SHOWN OR THAT THE GIVEN LOCATIONS ARE EXACT. CONFIRMATION OF EXISTENCE AND EXACT LOCATION OF ALL UTILITIES MUST BE OBTAINED FROM THE INDIVIDUAL UTILITIES BEFORE PROCEEDING WITH CONSTRUCTION.

VERTICAL DATUM: CGVD28 (HT2.0 Geoid)	
HORIZONTAL DATUM: NAD83 (June 1990), Zone 14	
DESIGNED BY	RG
CHECKED BY	SC
DRAWN BY	RS
APPROVED BY	KZ
SCALE:	
HORIZONTAL	1:250
VERTICAL	1:50
RELEASED FOR CONSTRUCTION	<i>[Signature]</i>
DATE	2023 03 06
DATE	Mar 9, 2023
NO.	REVISIONS
DATE	BY
PLOT DATE: 2023 03 06	

PROVINCE OF MANITOBA  
S.R.J. COURNOYER  
Member  
22699  
2023-03-13  
REGISTERED PROFESSIONAL ENGINEER  
Digitally signed by Stacy Cournoyer, P. Eng  
CONSULTANT DRAWING NUMBER

**THE CITY OF WINNIPEG**  
WATER AND WASTE DEPARTMENT  
ENGINEERING DIVISION  
2023 WATER MAIN RENEWALS  
CONTRACT 6  
TALBOT AVENUE  
14 W OF BRAZIER STREET TO  
85.5 E OF BRAZIER STREET  
SHEET 11 OF 12  
CITY DRAWING NUMBER  
D-16524