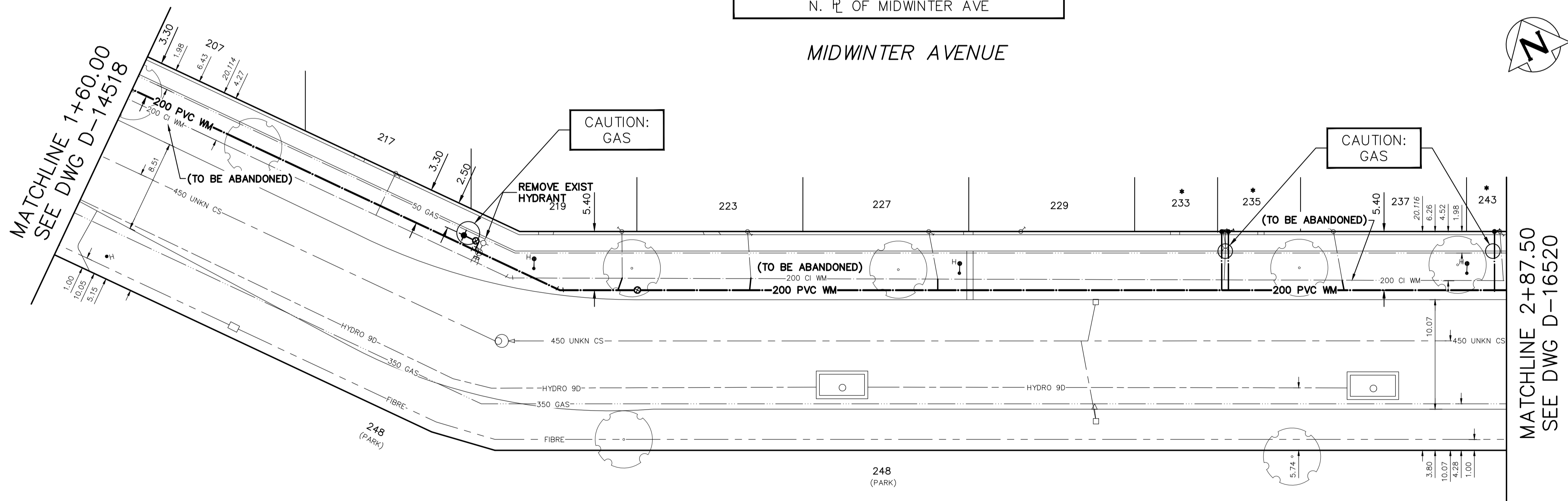


WATER SERVICE INFORMATION					
ADDRESS	SIZE (mm) MATERIAL (STREET)	SIZE (mm) MATERIAL (PROP.)	SHORT & LONG MEASUREMENT	CORP LOCATION	REMARKS
207 MIDWINTER AVE RESIDENTIAL	-	-	-	-	NO HOUSE ON LOT
217 MIDWINTER AVE RESIDENTIAL	20 CU	20 CU	8.05 EWL OF HSE	OPP OF S/C	RECONNECT SERVICE
219 MIDWINTER AVE RESIDENTIAL	20 CU	20 CU	160.776 EWL HENDERSON HWY ROW	OPP OF S/C	RECONNECT SERVICE
223 MIDWINTER AVE RESIDENTIAL	20 CU	20 CU	0.99 EWL OF BLDG	OPP OF S/C	RECONNECT SERVICE
227 MIDWINTER AVE RESIDENTIAL	38 CU	38 CU	1.06 WEL BLDG	OPP OF S/C	RECONNECT SERVICE
229 MIDWINTER AVE RESIDENTIAL	38 CU	38 CU	64.633 WML BRAZIER ST	0.9 E OF S/C	RECONNECT SERVICE
233 MIDWINTER AVE RESIDENTIAL	12 CU	12 CU	0.99 EWL OF BLDG	OPP OF S/C	RECONNECT SERVICE
235 MIDWINTER AVE RESIDENTIAL	20 CU	12 CU	1.24 EEL HSE	OPP OF S/C	RENEW TO R W/20 CU WYED W/235
237 MIDWINTER AVE RESIDENTIAL	20 CU	12 CU	37.518 WML BRAZIER ST	OPP OF S/C	RENEW TO R W/20 CU WYED W/233
243 MIDWINTER AVE RESIDENTIAL	12 LEAD	12 LEAD	2.20 EWL HSE	0.7 E OF S/C	RECONNECT SERVICE
	12 LEAD	12 LEAD	27.463 WML BRAZIER ST	0.3 E OF S/C	RENEW TO R W/20 CU

* SERVICES TO BE RENEWED TO R. ALL OTHERS TO BE RECONNECTED

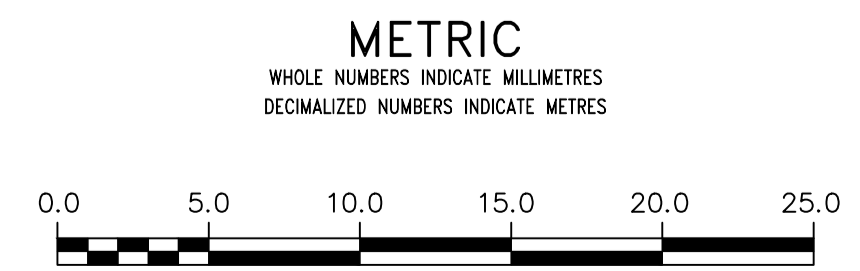
NOTE: CHAINAGES SHOWN ARE ALONG N. R.L. OF MIDWINTER AVE

MIDWINTER AVENUE



FOR INDEX SEE D-16515

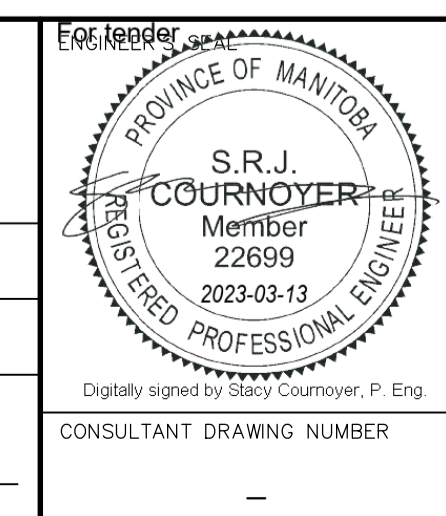
NOTE: ALL VALVES TO BE INSTALLED COUNTERCLOCKWISE TO CLOSE



WARNING
IF POWER EQUIPMENT OR EXPLOSIVES ARE TO BE USED FOR EXCAVATION ON THIS PROJECT THE CONTRACTOR MUST:
1) NOTIFY THE GAS COMPANY OF THE PROPOSED LOCATION OF EXCAVATION.
2) TAKE PRECAUTION TO AVOID DAMAGE TO GAS COMPANY INSTALLATIONS.
SEE PROVINCIAL REGULATION 21072 FOR DETAILS

LOCATION APPROVED UNDERGROUND STRUCTURES
SUPV. U/G STRUCTURES COMMITTEE DATE
NOTE:
LOCATION OF UNDERGROUND STRUCTURES AS SHOWN ARE BASED ON THE BEST INFORMATION AVAILABLE BUT NO GUARANTEE IS GIVEN THAT ALL EXISTING UTILITIES ARE SHOWN OR THAT THE GIVEN LOCATIONS ARE EXACT. CONFIRMATION OF EXISTENCE AND EXACT LOCATION OF ALL UTILITIES MUST BE OBTAINED FROM THE INDIVIDUAL UTILITIES BEFORE PROCEEDING WITH CONSTRUCTION.

VERTICAL DATUM: CGVD28 (HT2.0 Geoid)	
HORIZONTAL DATUM: NAD83 (June 1990), Zone 14	
DESIGNED BY	RG
CHECKED BY	SC
DRAWN BY	RS
APPROVED BY	KZ
SCALE:	
HORIZONTAL	1:250
VERTICAL	1:50
DATE	2023 03 03
DATE	Mar 9, 2023
NO.	REVISIONS
DATE	BY
PLOT DATE: 2023 03 03	



THE CITY OF WINNIPEG
WATER AND WASTE DEPARTMENT
ENGINEERING DIVISION

2023 WATER MAIN RENEWALS
CONTRACT 6
MIDWINTER AVENUE
60 E OF HENDERSON HIGHWAY R.O.W. TO
13.5 W OF BRAZIER STREET

SHEET 6 OF 12
CITY DRAWING NUMBER
D-16519

CONSULTANT DRAWING NUMBER: -