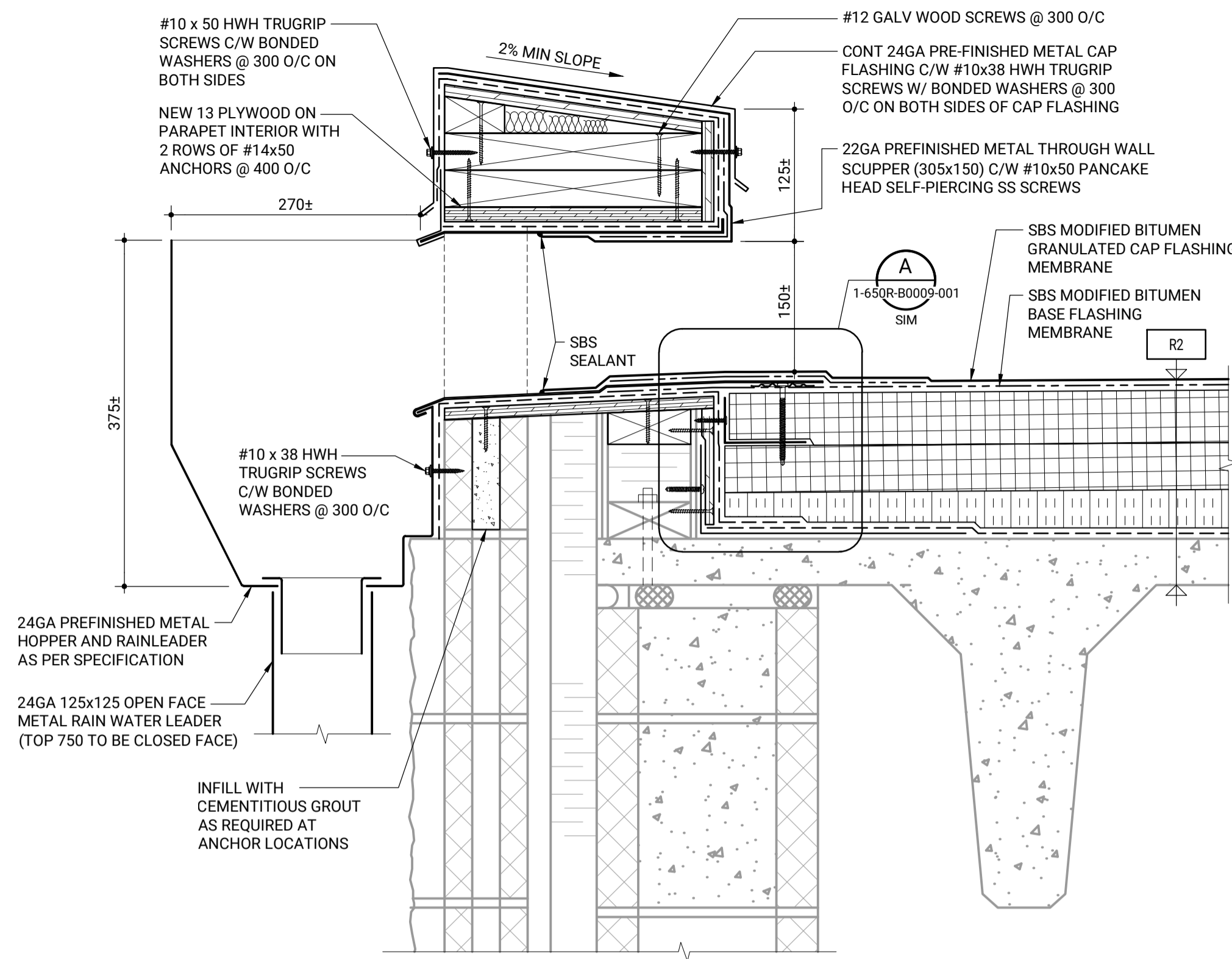
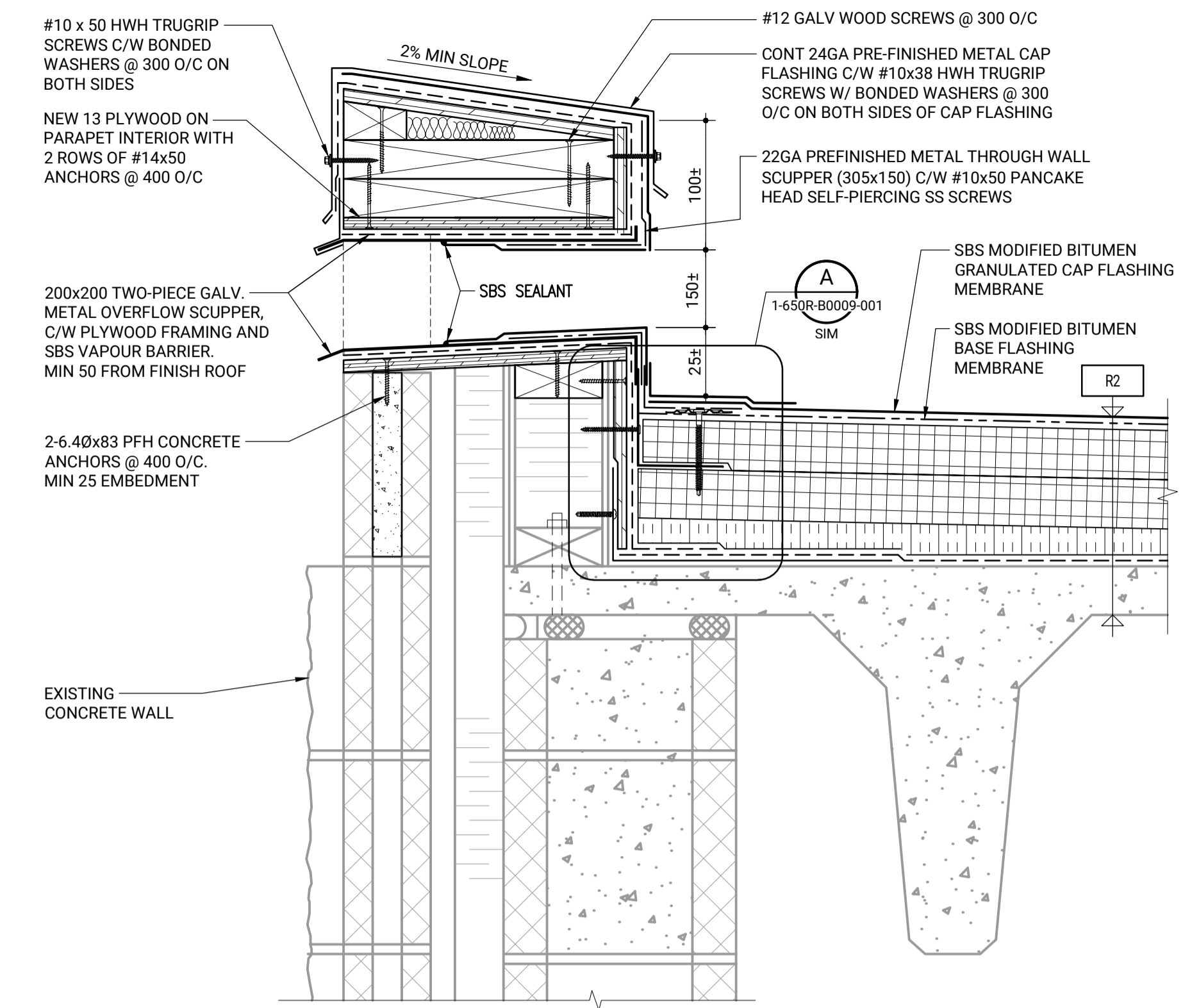


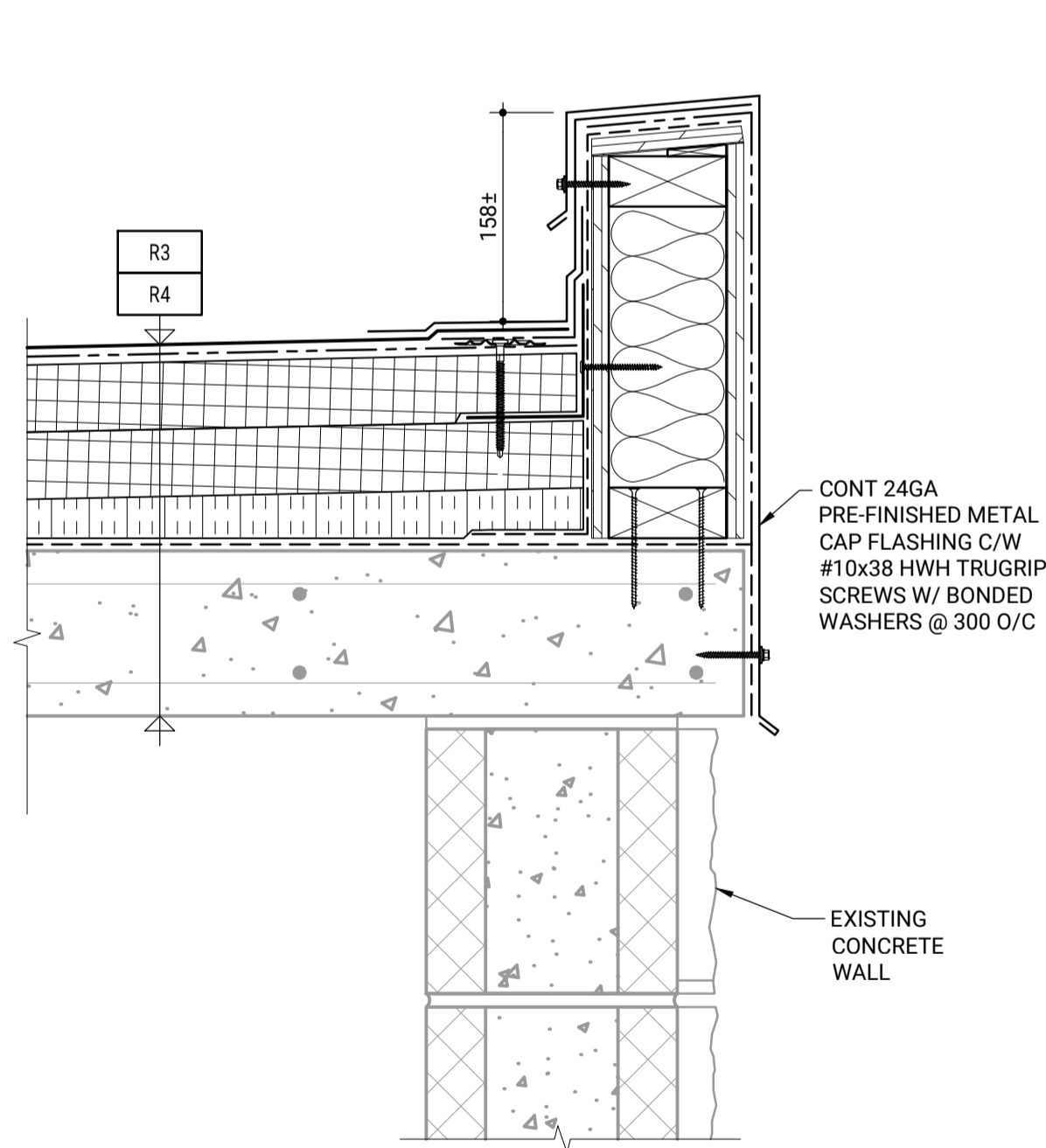
1 TYPICAL ROOF PARAPET DETAIL  
1:5



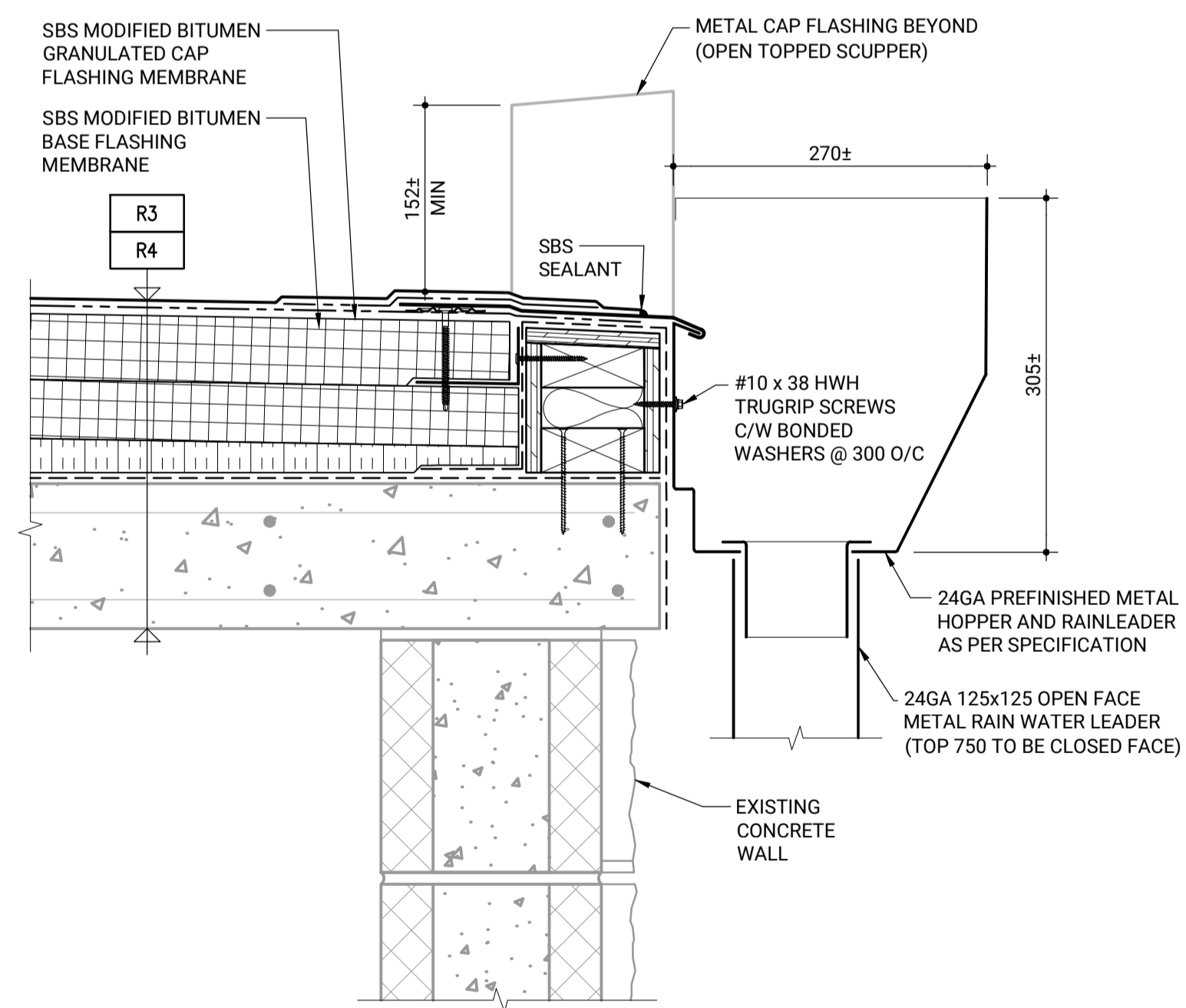
2 TYPICAL SCUPPER DETAIL  
1:5



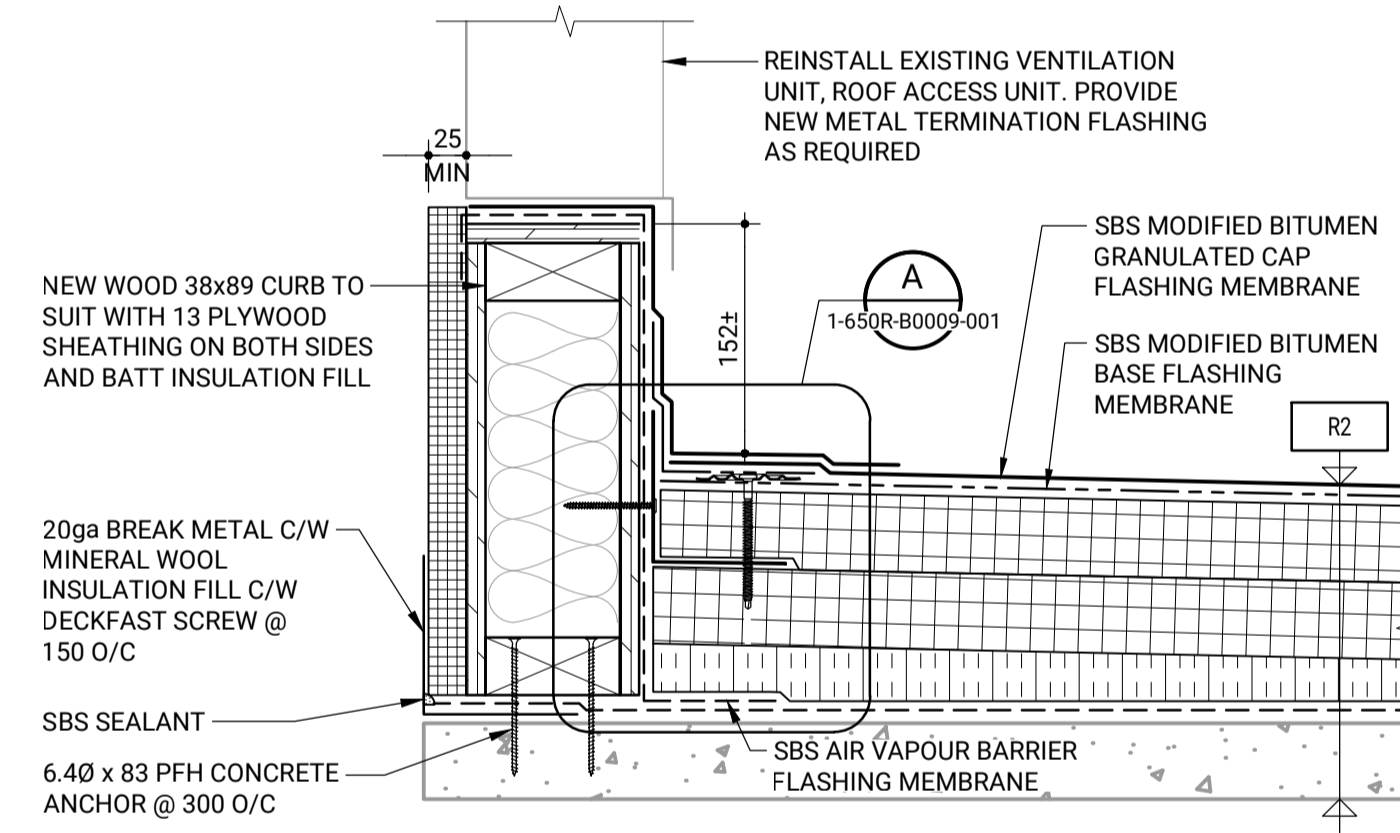
3 TYPICAL OVERFLOW SCUPPER DETAIL  
1:5



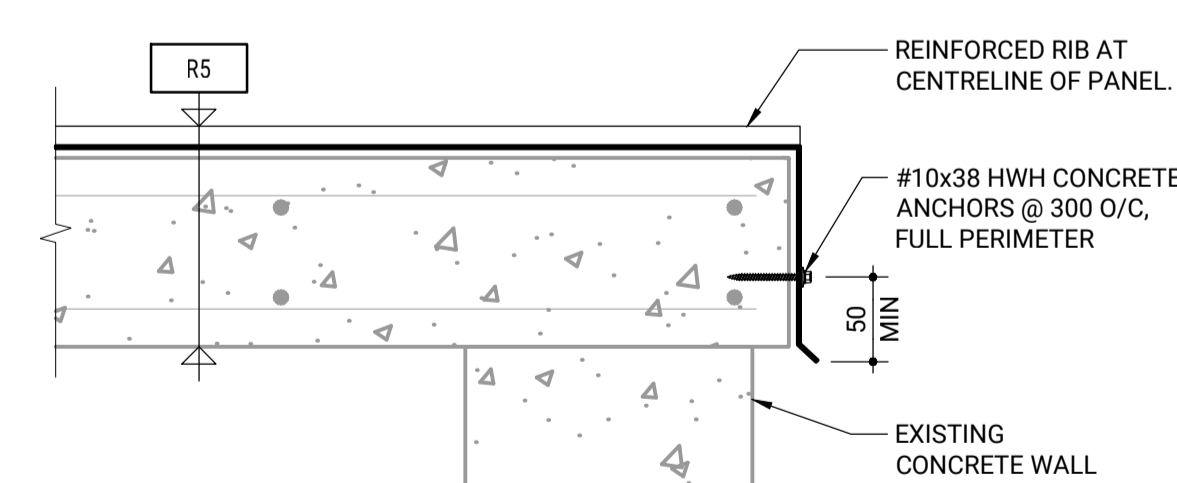
4 ROOF EDGE DETAIL  
1:5 (ROOF: R3 & R4)



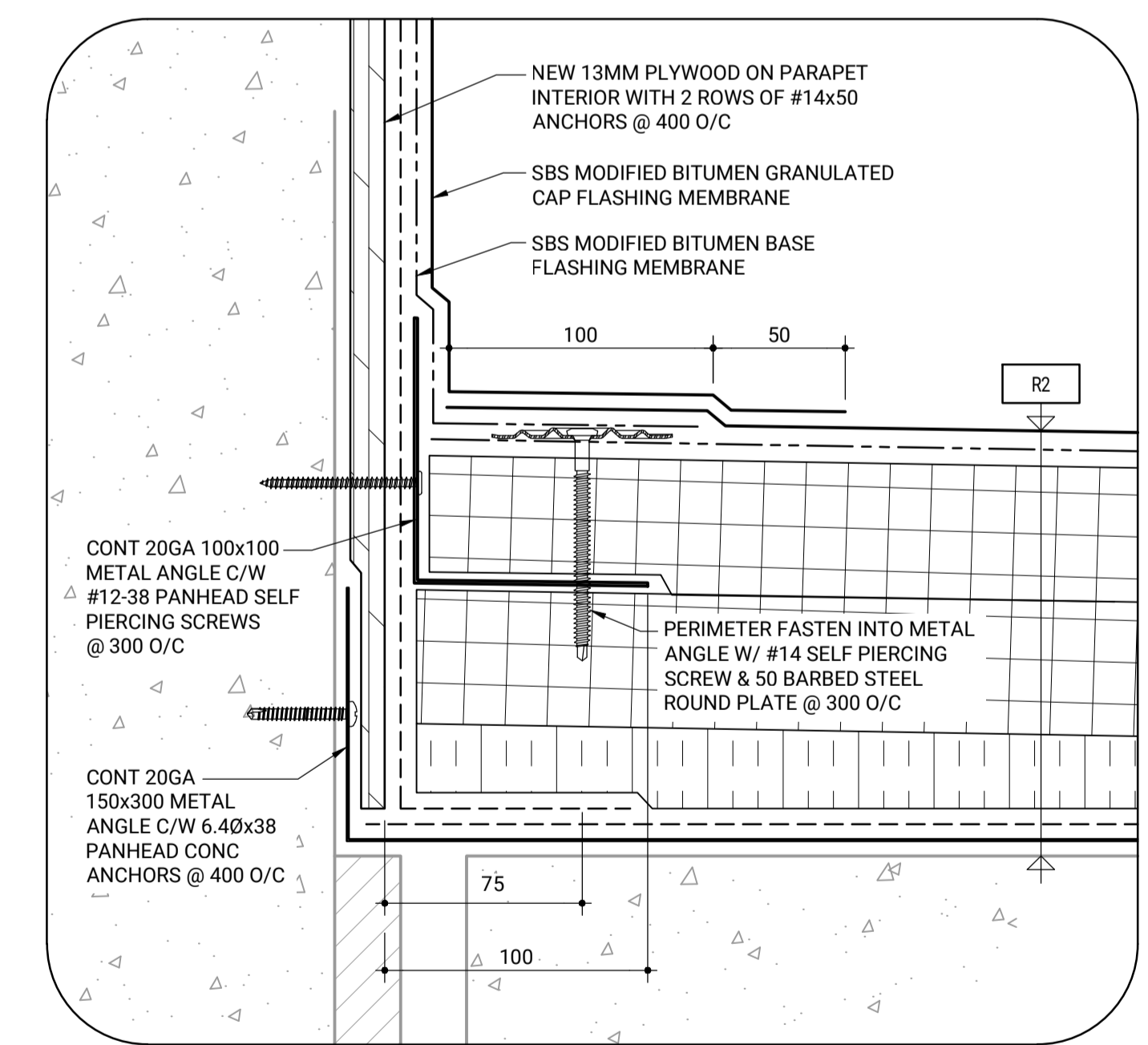
5 ROOF EDGE DETAIL  
1:5 (ROOF: R3 & R4)



6 TYPICAL CURB DETAIL  
1:5



7 ROOF EDGE DETAIL  
1:5 (ROOF: R5)



A TYPICAL PERIMETER FASTENING DETAIL  
NTS

10		
9		
8		
7		
6		
5		
4		
3	1-650R-B0009-001	BUILDING ROOFING DETAILS
2	1-650R-B0008-001	BUILDING ROOF PLAN
1	1-650R-D0005-001	DRAWING INDEX, NOTES, SCHEDULE & LEGENDS
NO.	DRAWING NUMBER	REFERENCE DRAWING TITLE

**ENGINEERS  
GEOSCIENTISTS  
MANITOBA**  
Certificate of Authorization  
Crosier Kilgour & Partners Ltd.  
No. 235

B.M. ELEV.					
0	ISSUED FOR TENDER	23/12/11	JAW		
NO.	REVISIONS	DATE	BY	DATE	

**Crosier Kilgour**  
Structural Engineering & Building Performance

DESIGNED BY	G.J.H.	CHECKED BY	JAW
DRAWN BY	LOL	APPROVED BY	SEZ
SCALE:	NTS	RELEASED FOR CONSTRUCTION BY:	
		DATE	2023/12/11

ENGINEER'S SEAL  
PROVINCE OF MANITOBA  
**J.A. WELLS**  
2023-12-11  
REGISTERED PROFESSIONAL ENGINEER  
CONSULTANT DRAWING NO. S4.21

**THE CITY OF WINNIPEG**  
WATER AND WASTE DEPARTMENT  
ENGINEERING DIVISION

RESERVOIR ACCESS BUILDING ROOF REPLACEMENTS  
WILKES SOUTH RESERVOIR ACCESS BUILDING

CITY FILE NUMBER W-1014  
SHEET 1 OF 1  
CITY DRAWING NUMBER 1-650R-B0009-001

BUILDING ROOFING DETAILS