

TYPICAL CROSS SECTION
NTS

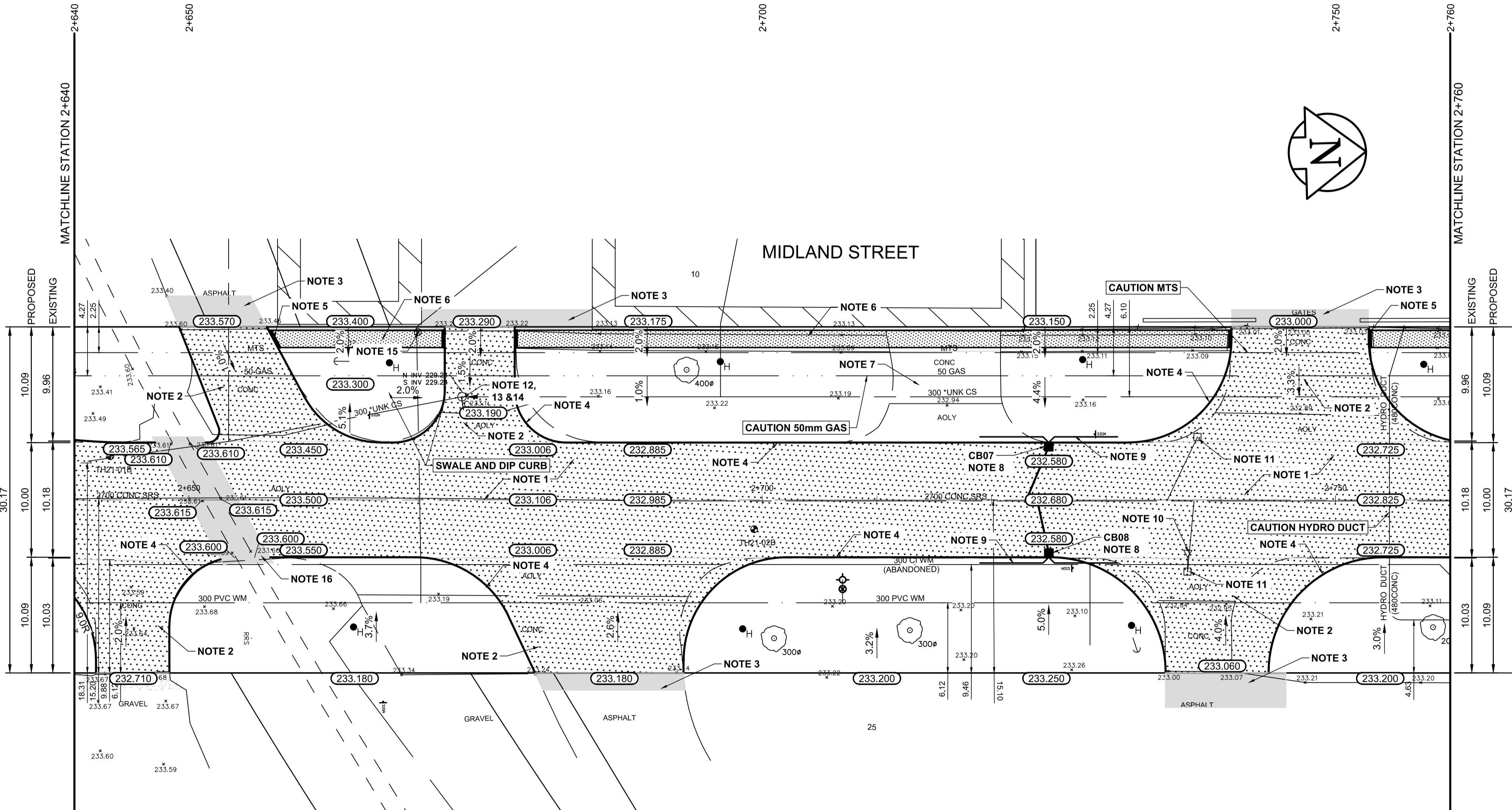
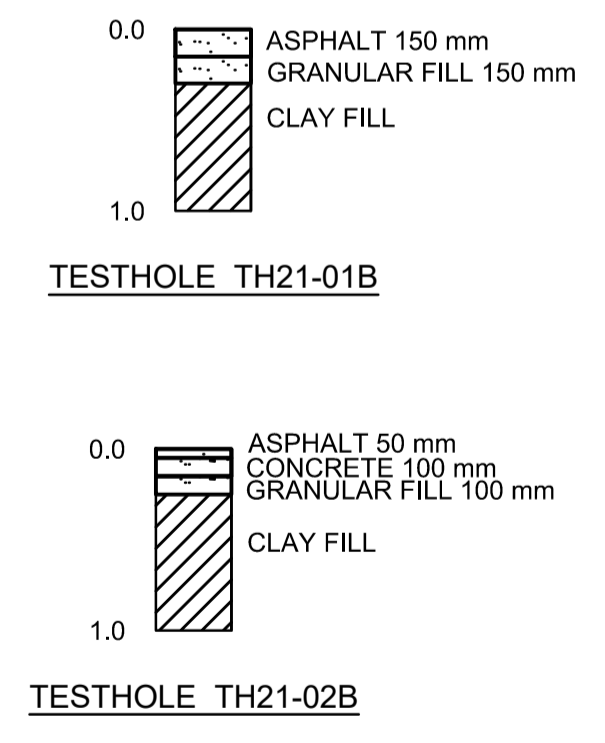
CATCH BASIN TABLE									
ITEM	RIM ELEV.	Sta	INVERT				SEWER	CONNECTION	LEAD
			EAST	WEST	NORTH	SOUTH			
CB07	232.580	2+725	230.880	231.430	231.430	231.430	228.055±	2700 SRS	5.0m
CB08	232.580	2+725	230.880	231.430	231.430	231.430	228.055±	2700 SRS	4.7m

REFERENCE NOTES:

- A. PAVEMENT DIMENSIONS ARE TO BACK OF CURB
- B. BASELINE IS CENTRE LINE ROADWAY
- C. PROPERTY LINES OBTAINED FROM CITY OF WINNIPEG L.B.I.S., AND NO SCALE FACTOR WAS APPLIED
- D. REFER TO AECOM FIELD BOOK NO. 5111

CONSTRUCTION NOTES:

1. REMOVE EXISTING PAVEMENT AND CONSTRUCT NEW 250mm PLAIN DOWELED CONCRETE PAVEMENT
2. REMOVE EXISTING PAVEMENT AND CONSTRUCT NEW 200mm REINFORCED CONCRETE PAVEMENT
3. REMOVE EXISTING ASPHALT PAVEMENT AND PLACE NEW ASPHALT PAVEMENT TYPE 1A
4. CONSTRUCT NEW MODIFIED BARRIER CURB (180mm HT. INTEGRAL)
5. CONSTRUCT NEW RAMP CURB (10-12mm HT., INTEGRAL)
6. RENEW EXISTING 100mm CONCRETE SIDEWALK
7. REMOVE EXISTING CONCRETE PAVEMENT
8. INSTALL NEW CURB AND GUTTER INLET c/w 1800mm CATCHBASIN (SD-024) AND CONNECT 250mm PVC LIDS TO EXISTING 2700mm STORM RELIEF SEWER
9. INSTALL NEW 150mm SUBDRAIN 6.0m ON EACH SIDE OF CATCH BASIN
10. REMOVE EXISTING CATCH PIT AND ABANDON LEAD
11. REMOVE EXISTING CATCH BASIN AND ABANDON LEAD
12. ADJUST EXISTING MANHOLE TO GRADE
13. REMOVE EXISTING FRAME AND COVER AND PLACE NEW FRAME AND COVER (AP-006/AP-007)
14. INSTALL NEW CAST IRON RISER RING
15. ADJUST EXISTING WATER VALVE TO GRADE
16. REPLACEMENT OF RAILWAY CROSSING SURFACE BY CP RAILWAY



EXISTING	LEGEND - PLAN	PROPOSED	EXISTING	LEGEND - PLAN	PROPOSED	EXISTING	LEGEND - PROFILE	PROPOSED
150mm W.M.	WATERMAIN	150mm W.M.	HYDRO	M.T.S.	— — — — —	— — — — —	PROFILE	— — — — —
Hydrant	HYDRANT	Hydrant	CONCRETE	CONCRETE	CONCRETE	— — — — —	SOUTH GUTTER	— — — — —
Valve	VALVE	Valve	ASPHALT	ASPHALT	ASPHALT	— — — — —	NORTH GUTTER	— — — — —
300mm L.D.S.	LAND DRAINAGE SEWER	300mm L.D.S.	PROPERTY LINE	PROPERTY LINE	PROPERTY LINE	— — — — —	S PROPERTY LINE	— — — — —
250mm W.W.S.	WASTEWATER SEWER	250mm W.W.S.	SURVEY BAR	SURVEY BAR	SURVEY BAR	— — — — —	N PROPERTY LINE	— — — — —
Manhole	MANHOLE	Manhole	ELEVATION	ELEVATION	ELEVATION	(235.750)	MULTI-USE PATHWAY	— — — — —
Catch Basin	CATCH BASIN	Catch Basin	TREE	TREE	TREE	300ø		
Catch Pit	CATCH PIT	Catch Pit	SIDEWALK RAMP	SIDEWALK RAMP	SIDEWALK RAMP			
Junctions	JUNCTIONS	Junctions	CONCRETE SIDEWALK	CONCRETE SIDEWALK	CONCRETE SIDEWALK			
Culvert	CULVERT	Culvert	FENCE	FENCE	FENCE			
Gas	GAS	Gas						

LOCATION APPROVED UNDERGROUND STRUCTURES

SUPV. U/G STRUCTURES COMMITTEE DATE

NOTE:
LOCATION OF UNDERGROUND STRUCTURES AS SHOWN ARE BASED ON THE BEST INFORMATION AVAILABLE. BUT NO GUARANTEE IS GIVEN THAT ALL EXISTING UTILITIES ARE SHOWN OR THAT THE GIVEN LOCATIONS ARE EXACT. CONFIRMATION OF EXISTENCE AND EXACT LOCATION OF ALL SERVICES MUST BE OBTAINED FROM THE INDIVIDUAL UTILITIES BEFORE PROCEEDING WITH CONSTRUCTION.

B.M. #27 - N.E. Cor. Sherwin Rd. & Saskatchewan Ave., ELEV. 231.1m S. Conc. foundation No. 975 Sherwin Rd., 2 m E. & 0.2 m below scored Conc. wall of S.W. Cor. of Bldg. EL: 233.965

NO.	REVISIONS	DATE	BY
0	ISSUED FOR TENDER	02/26/24	RC

AECOM

DESIGNED BY: BC CHECKED BY: BC

DRAWN BY: SS APPROVED BY: RC

HOR. SCALE: 1:250
VERTICAL: 1:10

RELEASED FOR CONSTRUCTION BY: DATE

CONSULTANT DRAWING NO. CT-08

ENGINEERS GEOSCIENTISTS MANITOBA
Certificate of Authorization
AECOM Canada Ltd.
No. 4671 Date: 02/26/24

METRIC
WHOLE NUMBERS INDICATE MILLIMETRES
DECIMALIZED NUMBERS INDICATE METRES

THE CITY OF WINNIPEG
PUBLIC WORKS DEPARTMENT
ENGINEERING DIVISION

2024 INDUSTRIAL STREET
RENEWAL PROGRAM

MIDLAND STREET AND SASKATCHEWAN AVENUE -
EMPRESS STREET TO NOTRE DAME AVENUE
CONCRETE PAVEMENT RECONSTRUCTION
STATION 2+640 TO STATION 2+760

CITY DRAWING NUMBER SHEET 08 OF 11