

Aubrey Flood and Lift

(1016 Palmerston Avenue)



PALMERSTON AVE

Flood

Lift

Outdoor Electrical Distribution

Transformer

3998

32030









1030 Palmerston Ave

Winnipeg, Manitoba

Google Street View

Jun 2022 See more dates



Google



Baltimore Flood and Lift

246 Churchill Drive



Transformer

Utility Meter

Flood

Lift

R=91.44
63.589

21.416
R=15.24

R=12.558
22.677

15.499

20.321
250

246

769

20.117

769

A

3

2

1

B

12

11





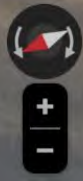
9338

⚠ DANGER
DO NOT OPEN
You can be badly hurt.





Churchill Drive Park
Google Street View
Sep 2017 See more dates



Colony Flood

32 Mostyn Place



GRANITE WAY

COLONY ST

Transformer

Flood

17751

169,107

51

33100

7096

265

5114

5114

803

803

7498

17488

5114

33100



22161

DF2

N6544-1

300

4160

WARNING

KEEP CLEAR
NO OBSTRUCTION ALLOWED
WITHIN 18" OF THIS

DANGER

DO NOT OPEN
You could be badly hurt

[Faint graffiti]







32 Granite Way



← Colony St
 Winnipeg, Manitoba

Google Street View

Jun 2022 See more dates



Google



Cornish Flood

110 Cornish Avenue





MIS JORNER

"HOME"
HOME
HOME
HOME
TAYSON
TAYSON
TAYSON
TAYSON

21696

TAYSON
TAYSON
TAYSON
TAYSON
TAYSON
TAYSON

ABB

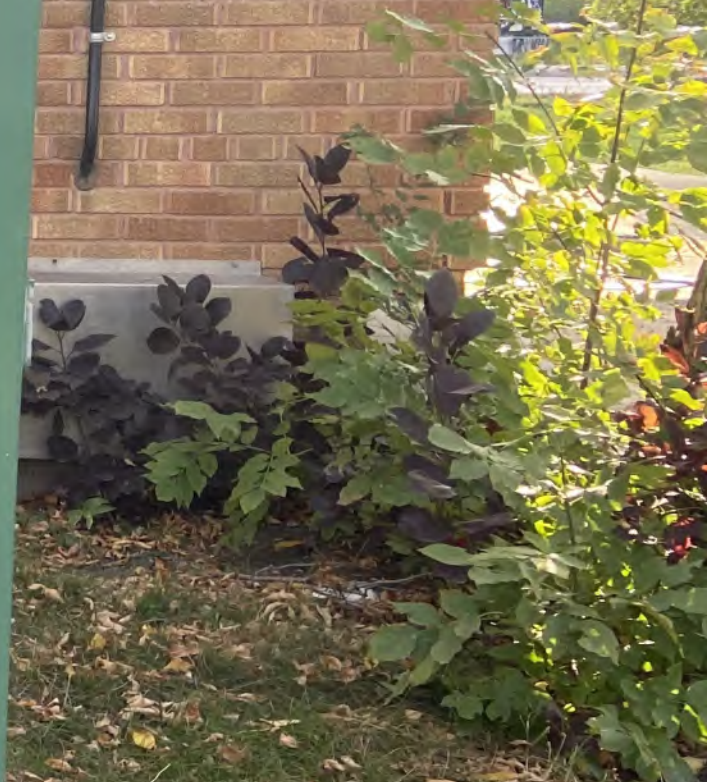
TL
SE
K
L

21696
953 41

DANGER
Voltage Hazard
LPS Required

DANGER
NO! 
DO NOT OPEN
You can be badly hurt
Mantoba Hydro 1-888-474-0707
KEEP CLEAR
NO OBSTRUCTION IS ALLOWED
WITHIN 3 METRES OF THIS
SIDE OF EQUIPMENT

DANGER
NO! 
DO NOT OPEN
You can be badly hurt
Mantoba Hydro 1-888-474-0707
KEEP CLEAR
NO OBSTRUCTION IS ALLOWED
WITHIN 3 METRES OF THIS
SIDE OF EQUIPMENT





SIEMENS

WARNING

110 Cornish Ave



Cornish Ave

Winnipeg, Manitoba

Google Street View

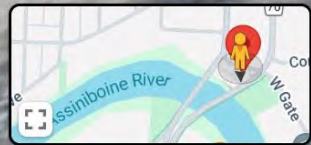
May 2019

See more dates



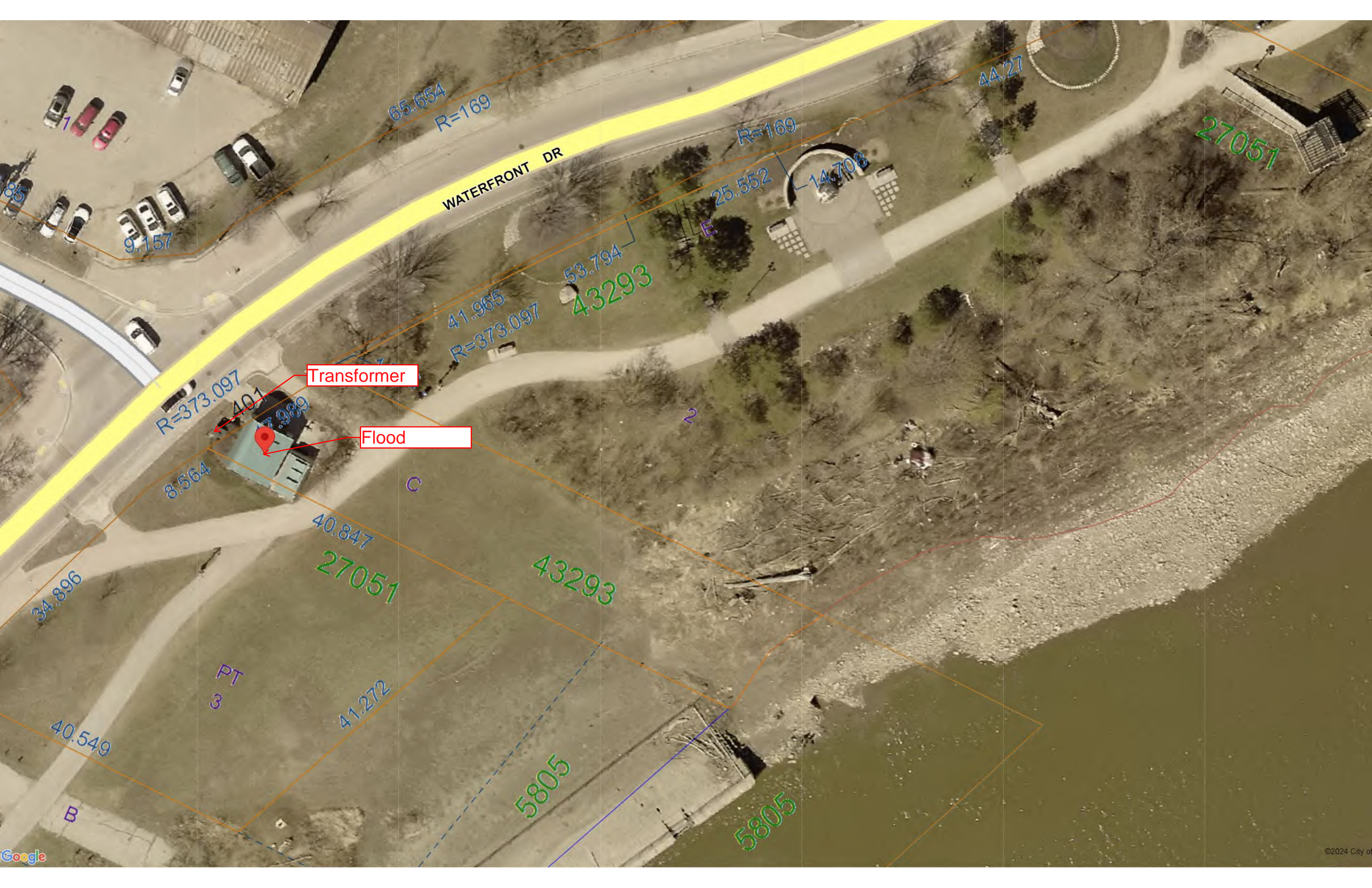
Google

Image capture: May 2019 © 2024 Google - Canada



Galt Flood

401 Waterfront Drive



WATERFRONT DR

Transformer

Flood

65.654
R=169

R=169

44.27

27051

25.552

14.708

53.794

43293

41.965

R=373.097

R=373.097

401

7.989

Flood

8.564

C

40.847

27051

43293

41.272

5805

5805

PT
3

40.549

B

34.896

9.157

1



23263

DF2
S4126-1
150
4160
600/347

KEEP CLEAR
NO WORKING SHOULD BE ALLOWED
UNTIL THE AREA IS FREE
OF OBSTACLES!
DANGER
DO NOT OPEN
You can be badly hurt!



22

MS # 23263

PLEASE REPORT
OPEN DOORS,
MISSING LOCKS OR
DAMAGES TO
TO
Manitoba
Hydro
1-888-474-0707

VEUILLEZ SIGNALER
LES PORTES OUVERTES,
LES VERROUS
MANQUANTS ET
TOUTS LES DOMMAGES À

WARNING

DF2

S4126-1

150

4160

600 / 347

KEEP CLEAR
NO OBSTRUCTION IS ALLOWED
WITHIN 3 METRES OF THIS
SIDE OF EQUIPMENT

DANGER


DO NOT OPEN
You can be badly hurt

DANGER

n be t
or

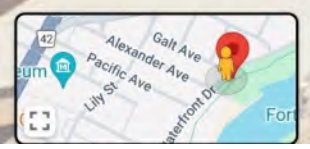






Google

← 402 Waterfront Dr
Winnipeg, Manitoba
Google Street View
Jun 2022 See more dates



Google



Hart

174 Glenwood Crescent



30126

1126

Lift

Flood

1

2

12-207
170

13-731
168

32

12-36

178

13-698

180

31

17-207

182

30

11-084

186

29

16-154

194

225

13-259

229

16-332

5

39-502

37-698

4

35-893

3

12332

13-167

231

13-264

233

10-191

4

10-058

6

10-363

29181

CP511727

PLEASE REPORT
SPARK SOURCE
NOTICE LOCUS ON
DANGER
1-888-474-0707
Manitoba
Hydro

TOULÉZ SIGNALER
LES POUTRES INCENDIÉES
1-888-474-0707
Manitoba
Hydro



⚡ DANGER

**KEEP AWAY
DO NOT TOUCH
ANYTHING**
You can be badly hurt
or killed

PLEASE REPORT
SPARK SOURCE
NOTICE LOCUS ON
DANGER
1-888-474-0707
Manitoba
Hydro

KEEP CLEAR
NO OBSTRUCTION IS ALLOWED
WITHIN 3 METRES OF THIS
SIDE OF EQUIPMENT

WARNING

Shock Hazard
PPE Required

SAFETY PROTECTION

PLEASE REPORT
SPARK SOURCE
NOTICE LOCUS ON
DANGER
1-888-474-0707
Manitoba
Hydro

⚡ DANGER

NO!

DO NOT OPEN
You can be badly hurt

PLEASE REPORT
SPARK SOURCE
NOTICE LOCUS ON
DANGER
1-888-474-0707
Manitoba
Hydro

KEEP CLEAR
NO OBSTRUCTION IS ALLOWED
WITHIN 3 METRES OF THIS
SIDE OF EQUIPMENT

DF1
6971-001
300
4160
600Y/347



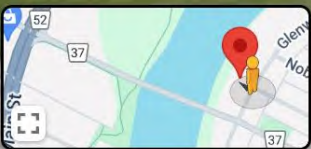




174 Glenwood Crescent



← 172 Glenwood Crescent
 Winnipeg, Manitoba
 Google Street View
 Jul 2014 See more dates



Google

Mission Flood

91 Archibald Street







Handwritten graffiti in blue spray paint, possibly reading "HOTO" or similar.

Large, abstract graffiti in brown spray paint covering a significant portion of the cabinet's surface.

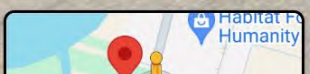
Caution
Do NOT open or tamper with
equipment unless you are a
qualified electrician.

WARNING
High Voltage
Electrical
Equipment

Large, abstract graffiti in brown spray paint on the left side of the image, partially overlapping the cabinet and the wall.



← 91 Rte 30
Winnipeg, Manitoba
Google Street View
Jun 2022 See more dates



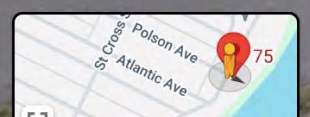
Polson Flood

75 Scotia Street



75 Scotia St

77 Scotia St
Winnipeg, Manitoba
Google Street View
Jun 2015 See more dates





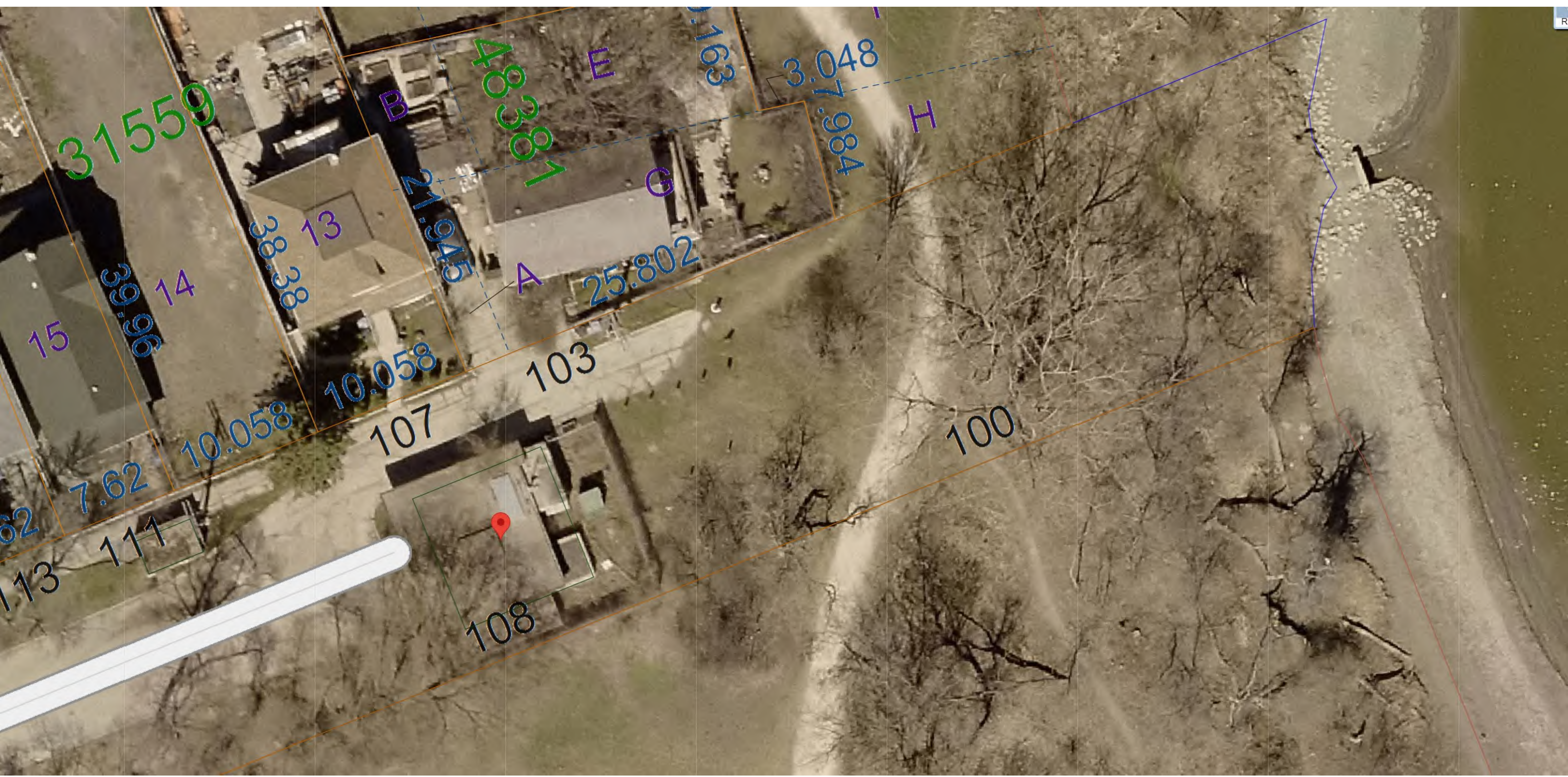






Selkirk Flood

108 Selkirk Avenue





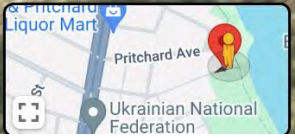
100



CITY OF WASHINGTON
AUTHORIZED PERSONNEL
ONLY

DENALI

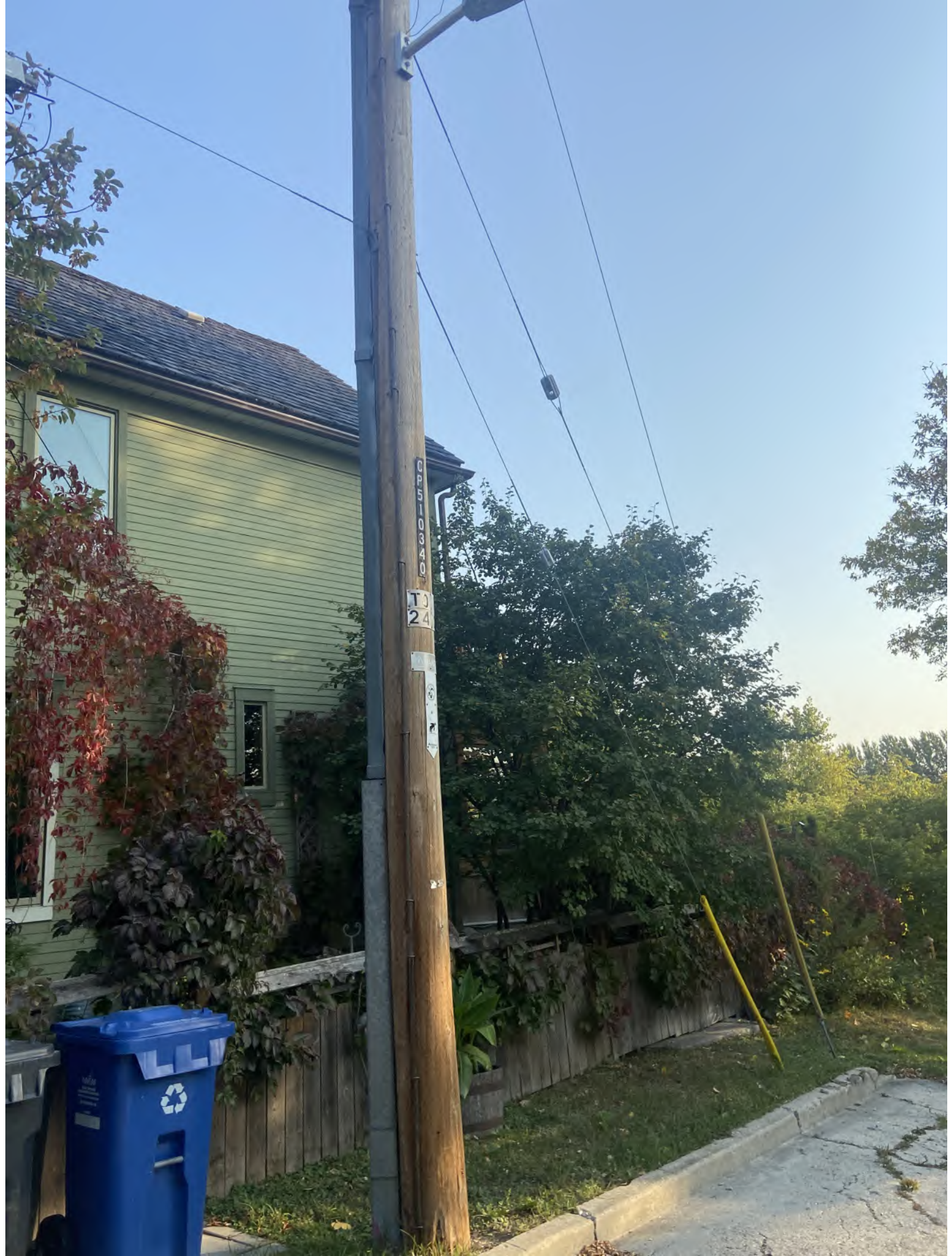
← Winnipeg, Manitoba
Google Street View
Jul 2012

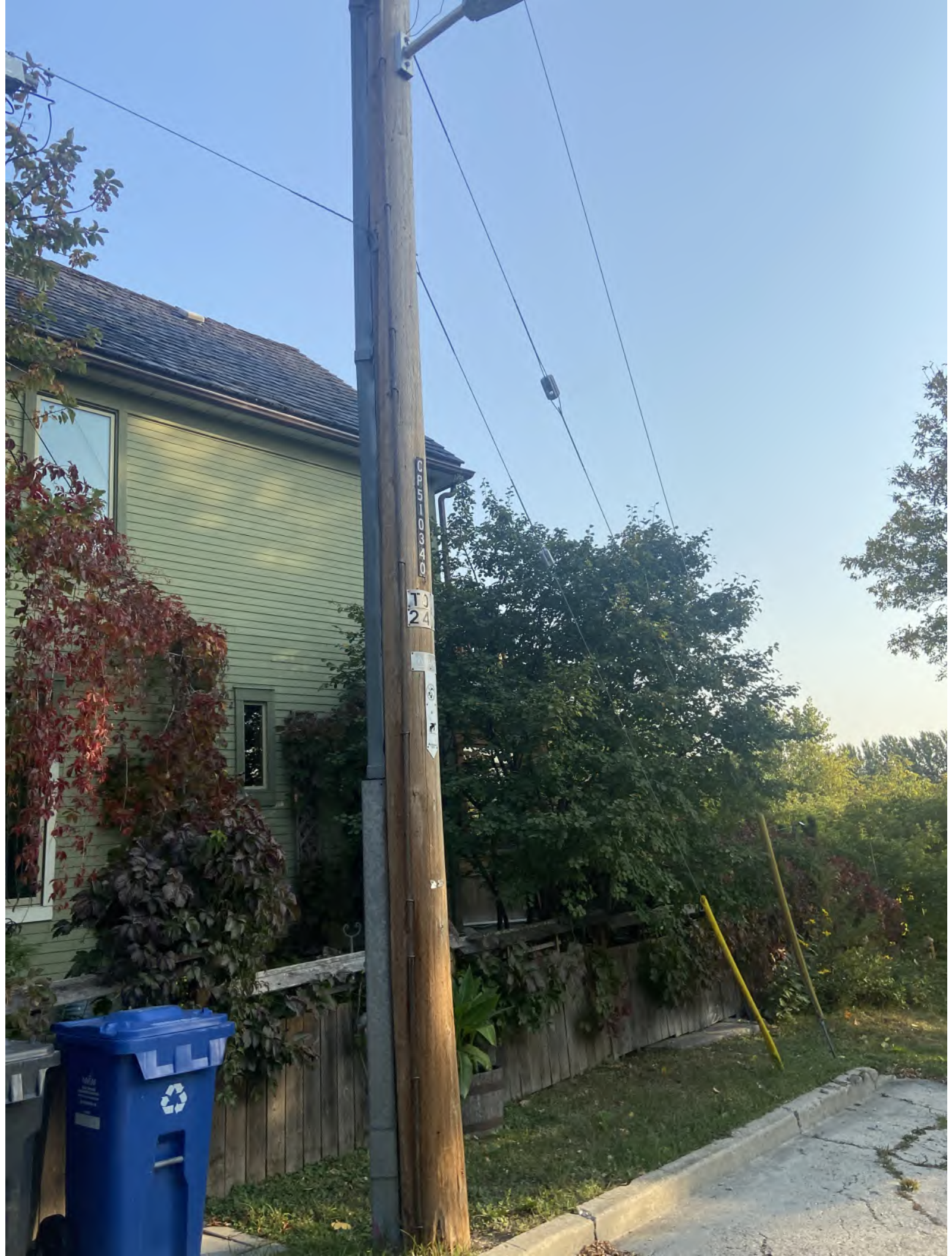


Google

CSTE with
main breaker

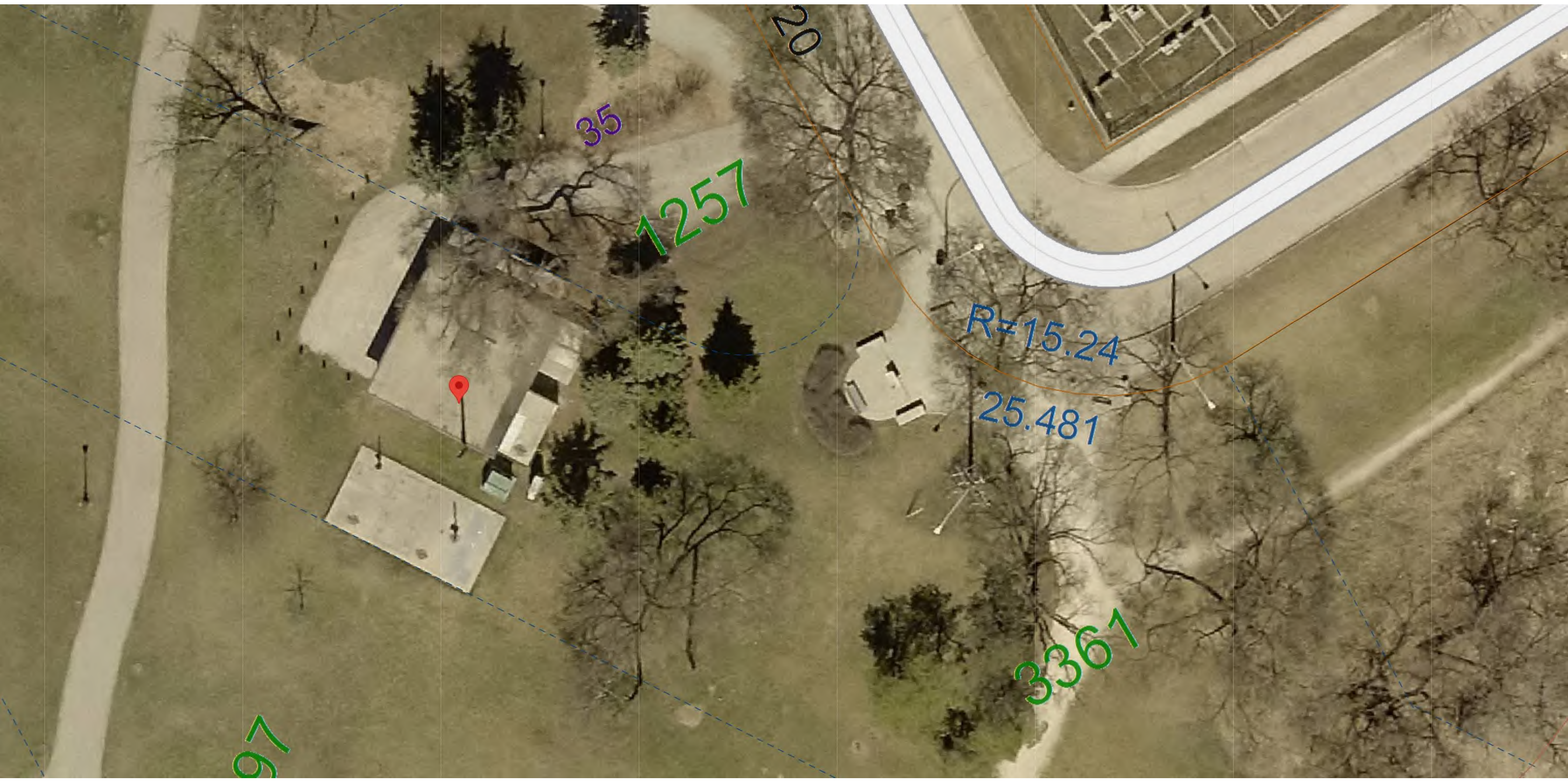






St. Johns Flood

20 Anderson Avenue



97

35

1257

20

R=15.24

25.481

3361

← 20 Anderson Ave 🔍 ✕

20 Anderson Ave
Winnipeg, Manitoba
📍 Google Street View
Jun 2015 [See more dates](#)











