

1 LOBBY 1:01
7.1 | 8.1 | 1:50

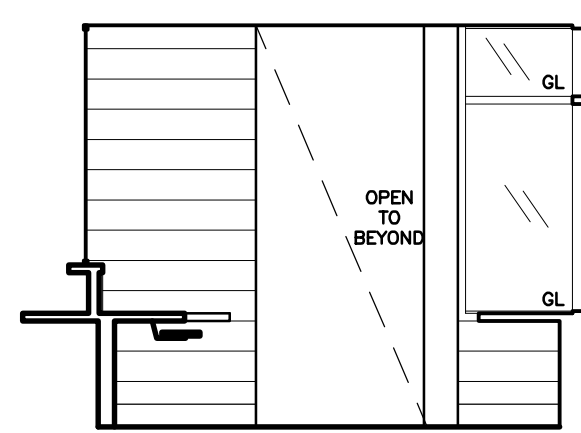
2 LOBBY 1:02A
7.1 | 8.1 | 1:50

3 LOBBY 1:02A
7.1 | 8.1 | 1:50

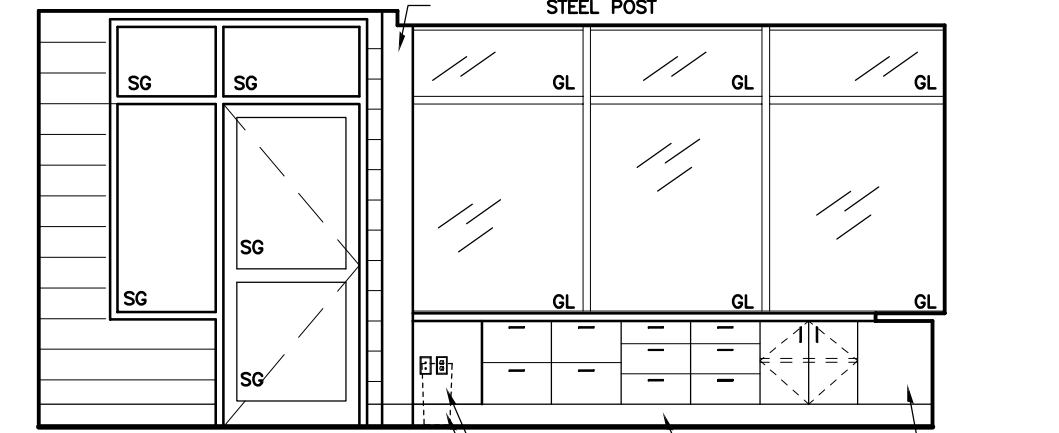
4 LOBBY 1:02A
7.1 | 8.1 | 1:50

5 LOBBY 1:02A
7.1 | 8.1 | 1:50

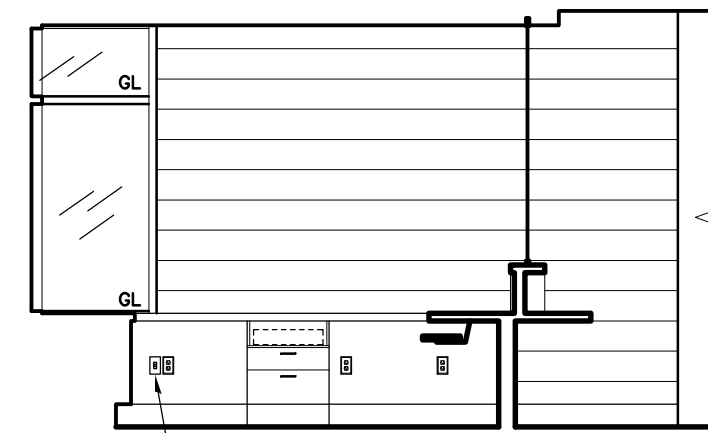
6 RECEPTION 1:02B
7.1 | 8.1 | 1:50



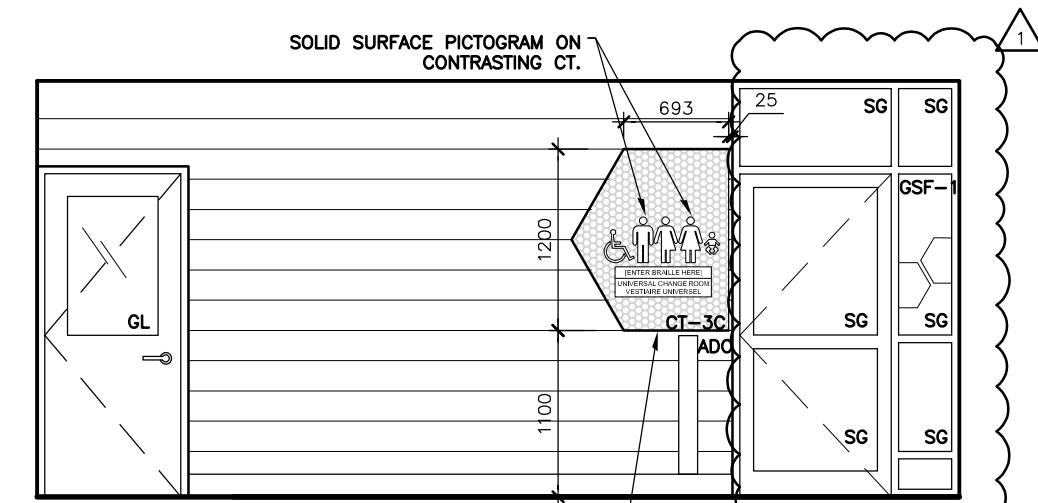
7 RECEPTION 1:02B
7.1 | 8.1 | 1:50



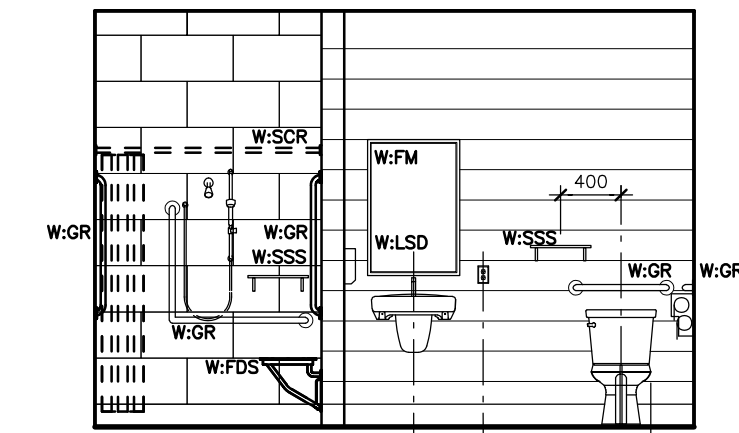
8 RECEPTION 1:02B
7.1 | 8.1 | 1:50



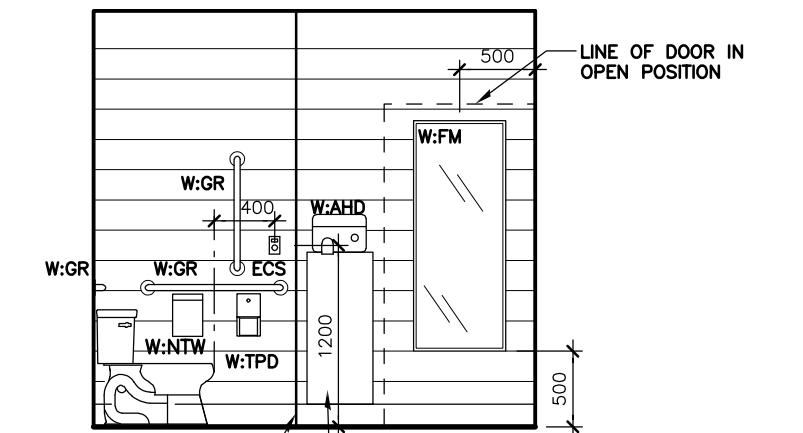
9 RECEPTION 1:02B
7.1 | 8.1 | 1:50



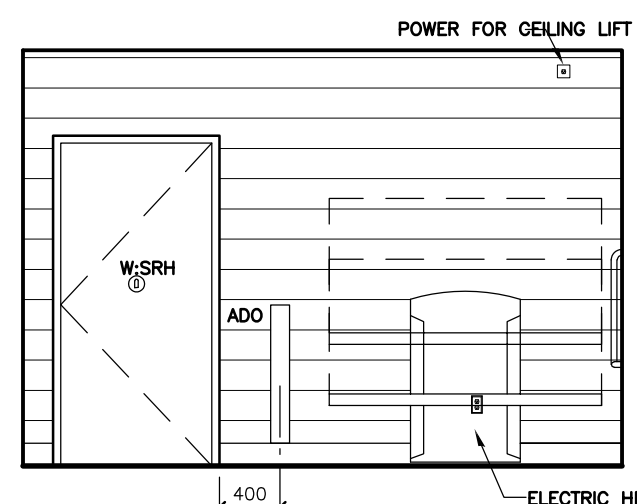
10 CORR. 1:03
7.1 | 8.1 | 1:50



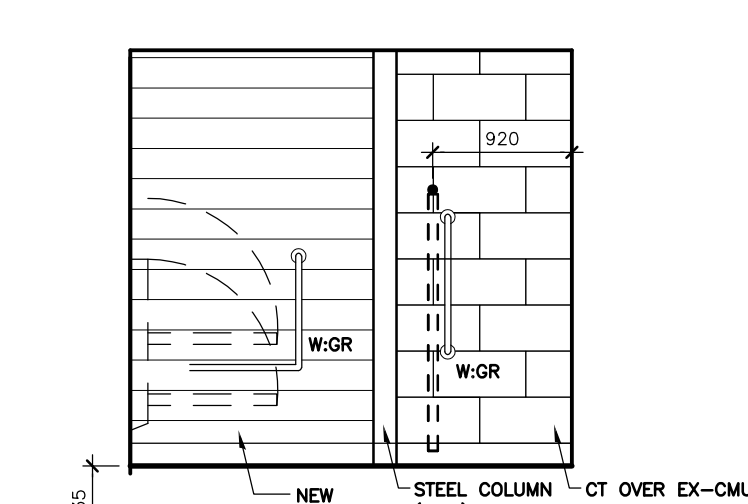
11 BARIATRIC UTR 1:04
7.1 | 8.1 | 1:50



12 BARIATRIC UTR 1:04
7.1 | 8.1 | 1:50



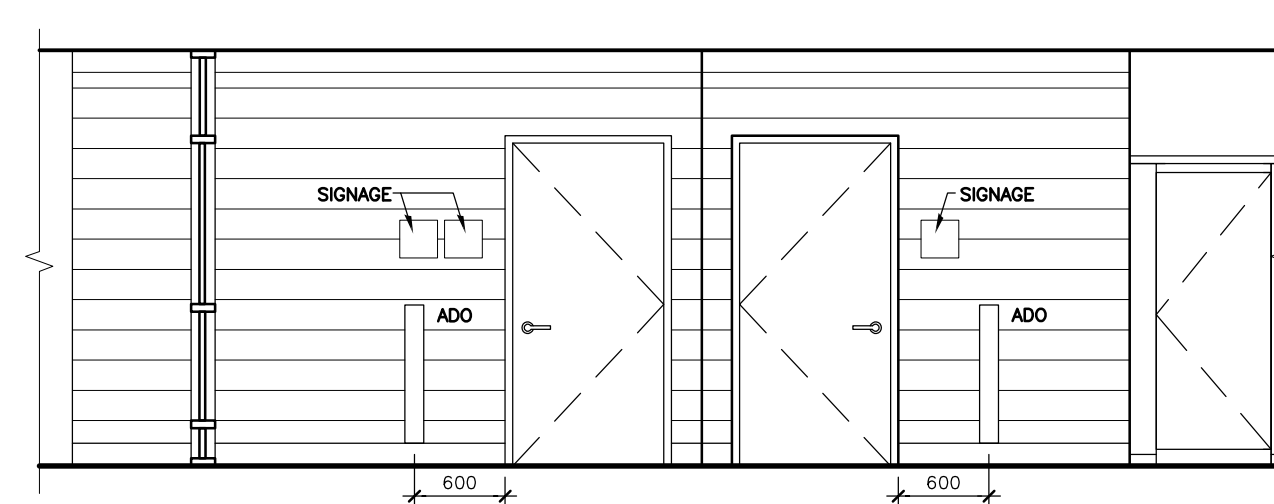
13 BARIATRIC UTR 1:04
7.1 | 8.1 | 1:50



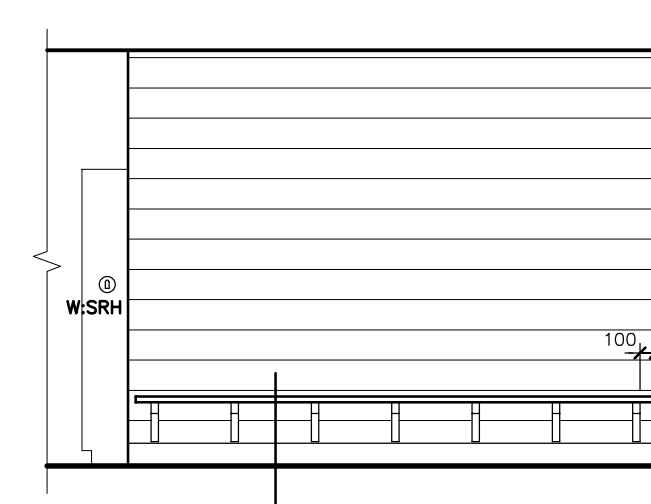
14 BARIATRIC UTR 1:04
7.1 | 8.1 | 1:50



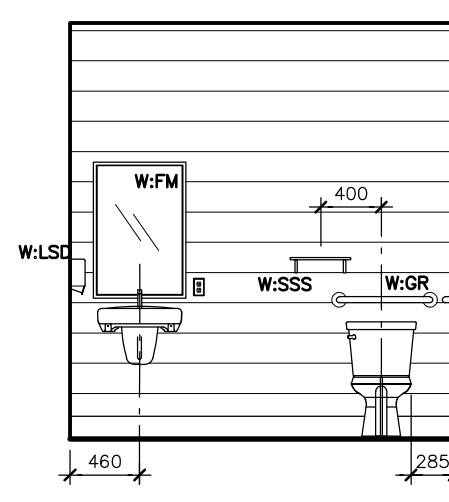
15 CORR. 1:05
7.1 | 8.1 | 1:50



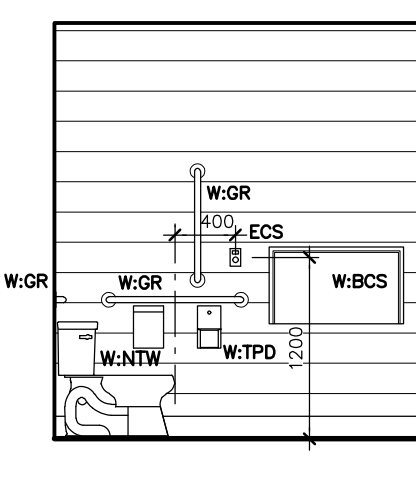
16 UNIV. CHG. CORR. 1:06A
7.1 | 8.1 | 1:50



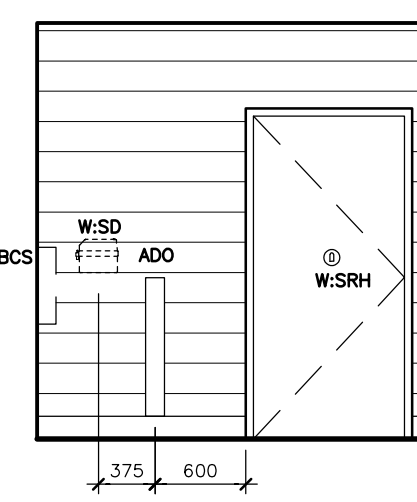
17 UNIV. CHG. CORR. 1:06A
7.1 | 8.1 | 1:50



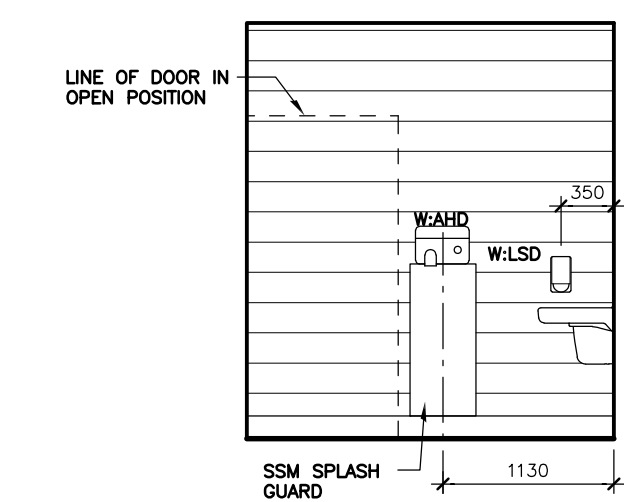
18 UTR 1:06B
7.1 | 8.1 | 1:50



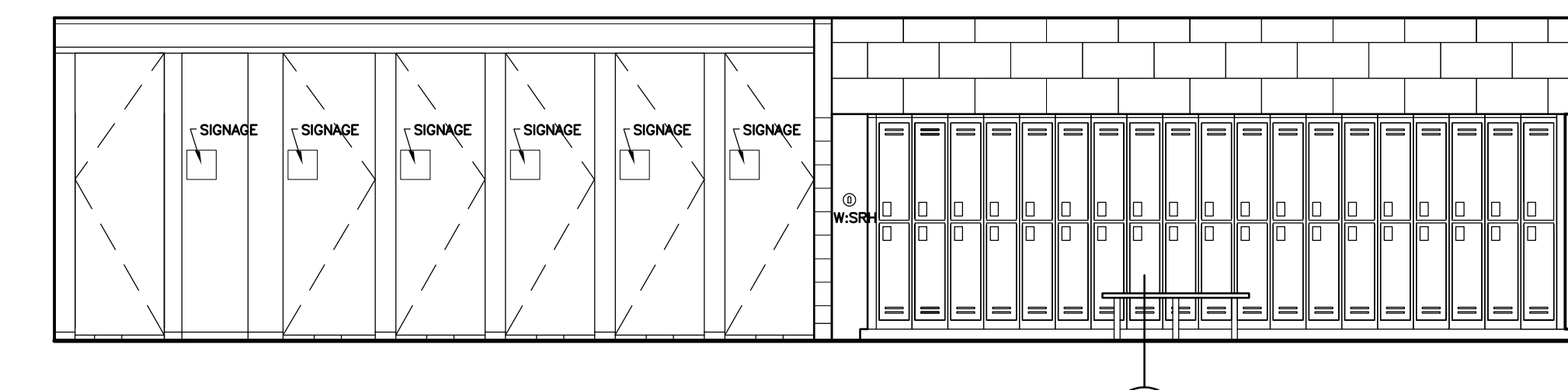
19 UTR 1:06B
7.1 | 8.1 | 1:50



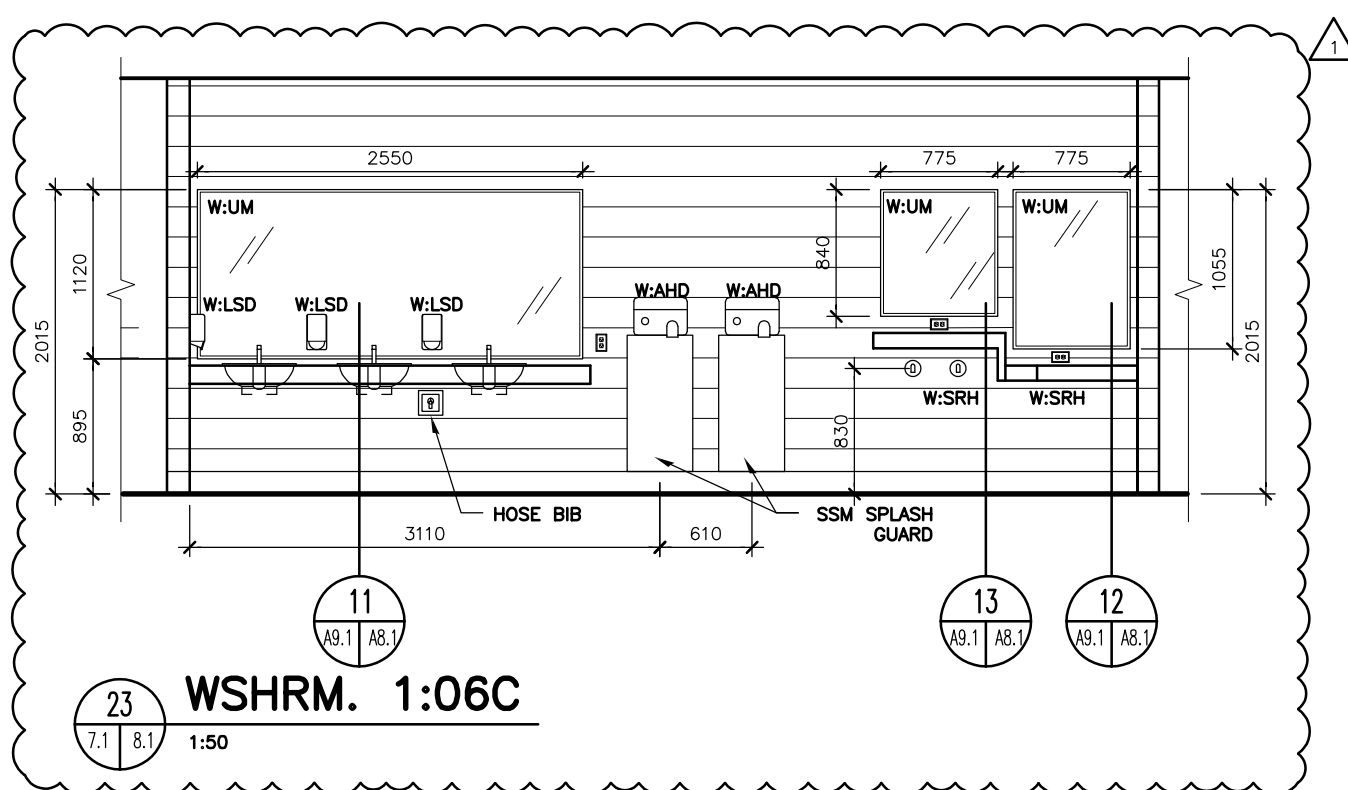
20 UTR 1:06B
7.1 | 8.1 | 1:50



21 UTR 1:06B
7.1 | 8.1 | 1:50



22 WSHRM. 1:06C
7.1 | 8.1 | 1:50



23 WSHRM. 1:06C
7.1 | 8.1 | 1:50

GENERAL NOTES

- FURNITURE AND EQUIPMENT THAT ARE NOT IN CONTRACT (NIC) ARE INDICATED WITH A DASHED LINE, AND ARE SHOWN FOR INFORMATION PURPOSES ONLY EXCEPT WHERE OTHERWISE INDICATED.
- PROVIDE WOOD BLOCKING CONCEALED IN WALL FOR ALL FURNITURE, EQUIPMENT AND ACCESSORIES MOUNTED AND/OR SECURED TO WALL. TYPICAL OF ALL IN CONTRACT, NOT IN CONTRACT (NIC) AND OWNER FURNISHED PRODUCTS (OFP). CONFIRM EXACT LOCATION OF BLOCKING WITH CONSULTANT PRIOR TO INSTALLATION.

WALL MOUNTED ACCESSORIES LEGEND

REFER TO SPECIFICATIONS SECTION 10 28 00

- WJCS ADULT CHANGE STATION
- WJHD AIR HAND DRYER
- WBCS BABY CHANGE STATION
- WFDOS FOLD DOWN SEAT
- WFM# FRAMED MIRROR
- WGR# GRAB RAIL
- WHD HAIR DRYER
- WJSD HAND SANITIZER DISPENSER
- WJLSD LIQUID SOAP DISPENSER
- WJMBR MOP BROOM RACK
- WJNTW NAPKIN/TAMPON WASTE
- WJPTD PAPER TOWEL DISPENSER
- WJSD SHARPS DISPOSAL
- WJSCR SHOWER CURTAIN ROD (C/W CURTAIN)
- WJSHD SANITARY NAPKIN DISPENSER
- WJSRH SAFETY ROBE HOOK
- WJSSS STAINLESS STEEL SHELF
- WJTPD TOILET PAPER DISPENSER
- WJUM UNFRAMED MIRROR

ABBREVIATIONS LEGEND

- ADO AUTOMATIC DOOR OPERATOR
- ECS EMERGENCY CALL SWITCH
- FAP FIRE ALARM PANEL
- FD FLOOR DRAIN
- FE FIRE-EXTINGUISHER
- GSF GLAZING SURFACE FILM
- LF LIGHT FIXTURE
- LG LAMINATED GLASS
- LK LOCKERS
- NIC NOT IN CONTRACT
- P.LAM PLASTIC LAMINATE
- SG SAFETY GLASS
- SIM SIMILAR
- SSM SOLID SURFACE MATERIAL
- TV TELEVISION
- TYP. TYPICAL
- W/M WALL MOUNTED
- X EXISTING

1	23/01/2024	ISSUED FOR ADDENDUM 2	JF
0	22/12/2023	ISSUED FOR CONSTRUCTION	CF
No.	Date	Issue / Revision	By

Drawn By: DN
Printing Date: JAN. 22, 2024

Drawings and specifications, as Instruments of service are the property of the architects, the copyright in the same being reserved to them. No reproduction may be made without the permission of the architects, and when made, must bear their names. All prints to be returned.

The contractor is to verify dimensions and data noted herein with conditions on the site and is held responsible for reporting any discrepancy to the architects for adjustment.

LM Architectural Group
500-136 Market Ave
Winnipeg, Manitoba Canada R3B 0P4
t: (204) 942.0681 f: (204) 943.8676
www.lm-architects.com

**CITY OF WINNIPEG
BONIVITAL POOL RENEWAL**

1215 Archibald St, Winnipeg, MB.

INTERIOR ELEVATIONS