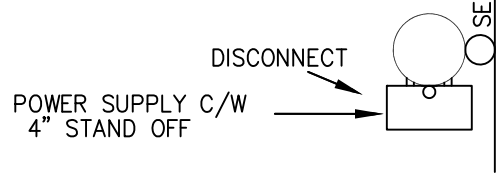
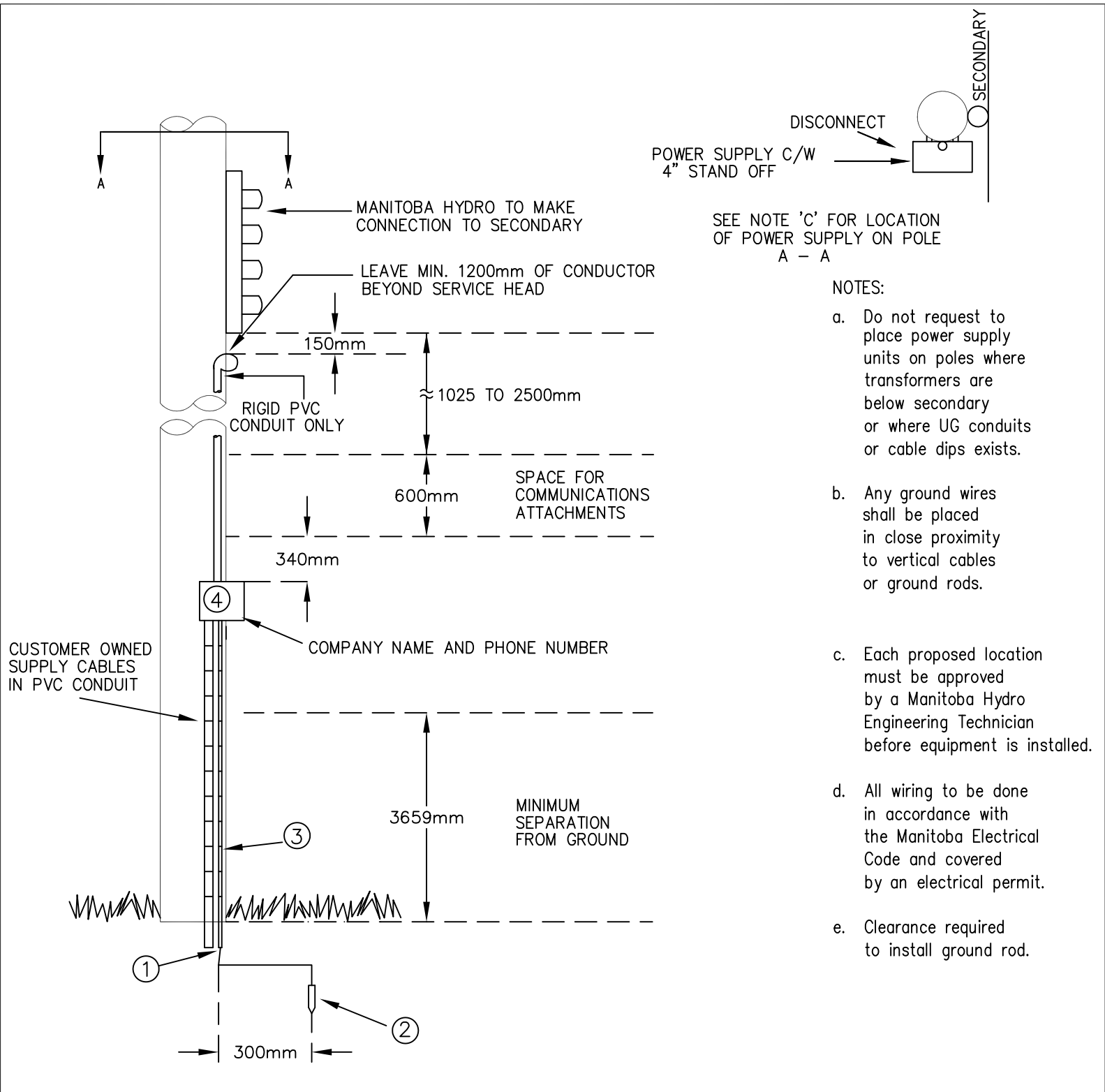


## **APPENDIX 'H'**

# **FLAT RATE INSTALL AND TRANSIT CONDUIT**

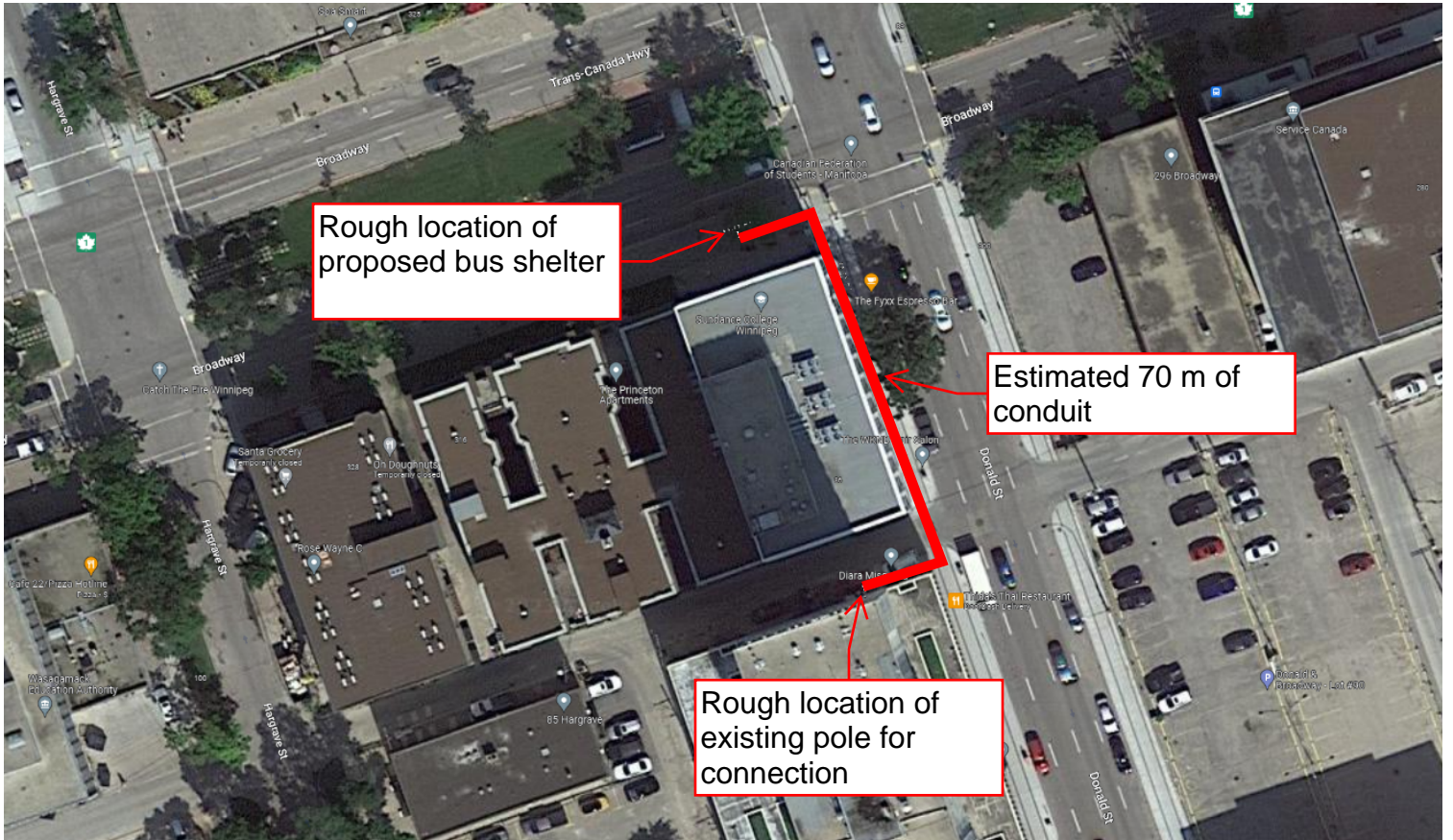


SEE NOTE 'C' FOR LOCATION OF POWER SUPPLY ON POLE  
A - A

- NOTES:
- a. Do not request to place power supply units on poles where transformers are below secondary or where UG conduits or cable dips exists.
  - b. Any ground wires shall be placed in close proximity to vertical cables or ground rods.
  - c. Each proposed location must be approved by a Manitoba Hydro Engineering Technician before equipment is installed.
  - d. All wiring to be done in accordance with the Manitoba Electrical Code and covered by an electrical permit.
  - e. Clearance required to install ground rod.

- 1 - #6 COPPER GROUND WIRE
- 2 - 1 X 10ft. GROUND ROD
- 3 - MECHANICAL PROTECTION FOR GROUND WIRE (WOOD MOULDING)
- 4 - SERVICE DISCONNECT
  - MAY BE MOUNTED ON BRACKETS AWAY FROM POLE
  - FACE - GET APPROVAL FOR LOCATION

|                                  |                 |                   |                                    |      |    |
|----------------------------------|-----------------|-------------------|------------------------------------|------|----|
| Title:<br>FLAT RATE INSTALLATION |                 | REVISIONS         |                                    | DATE | BY |
| Description:                     |                 |                   |                                    |      |    |
|                                  |                 |                   |                                    |      |    |
|                                  |                 |                   |                                    |      |    |
|                                  |                 |                   |                                    |      |    |
|                                  |                 |                   |                                    |      |    |
|                                  |                 |                   |                                    |      |    |
| Origination Date:<br>Dec.2011    | Drawn By:<br>JP | Dwg No.<br>1 OF 1 | Drawing File:<br>FLAT RATE INSTALL |      |    |



Rough location of proposed bus shelter

Estimated 70 m of conduit

Rough location of existing pole for connection

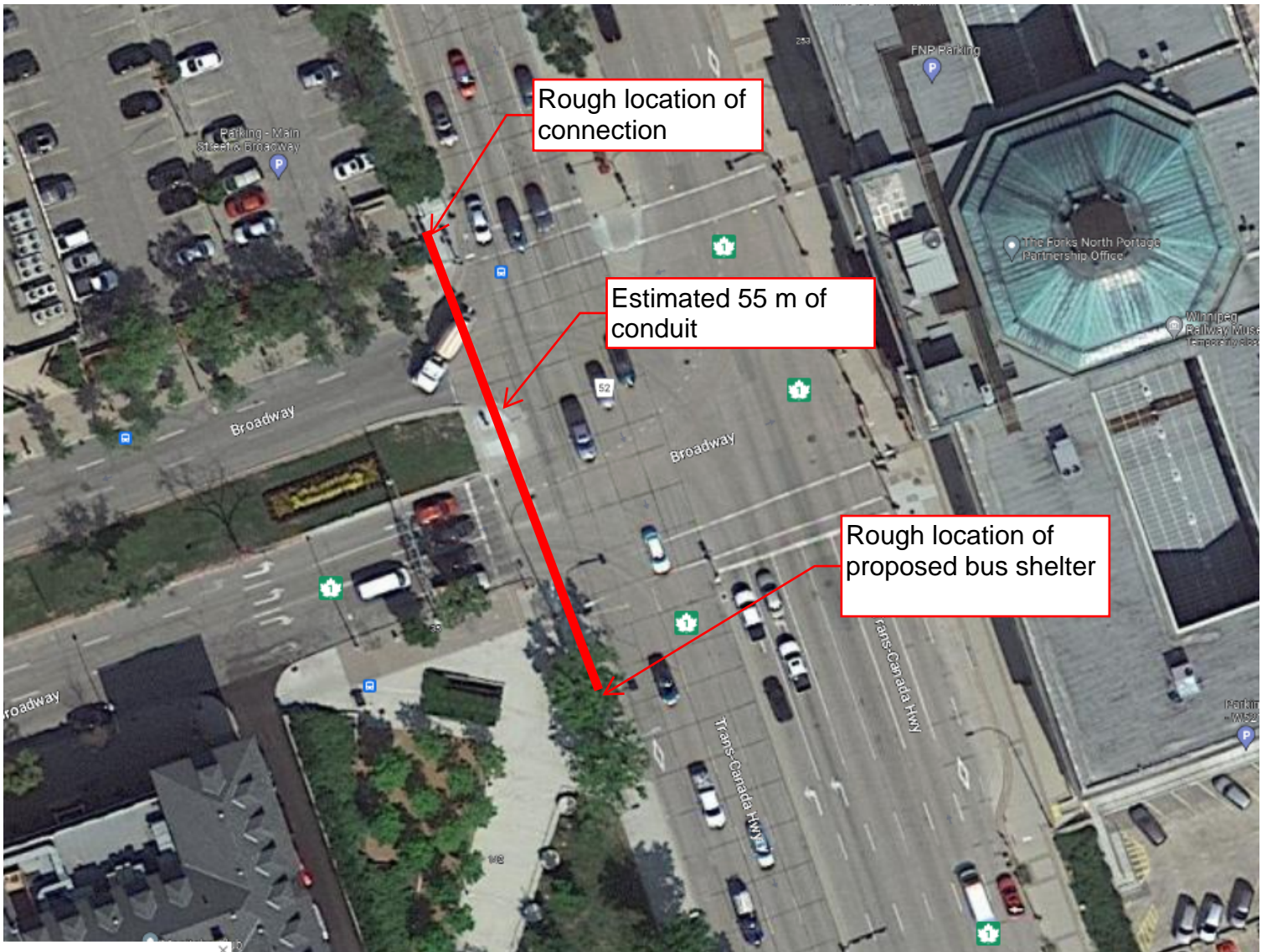


Rough location of proposed bus shelter

Estimated 55 m of conduit

Rough location of existing pole for connection





Rough location of connection

Estimated 55 m of conduit

Rough location of proposed bus shelter