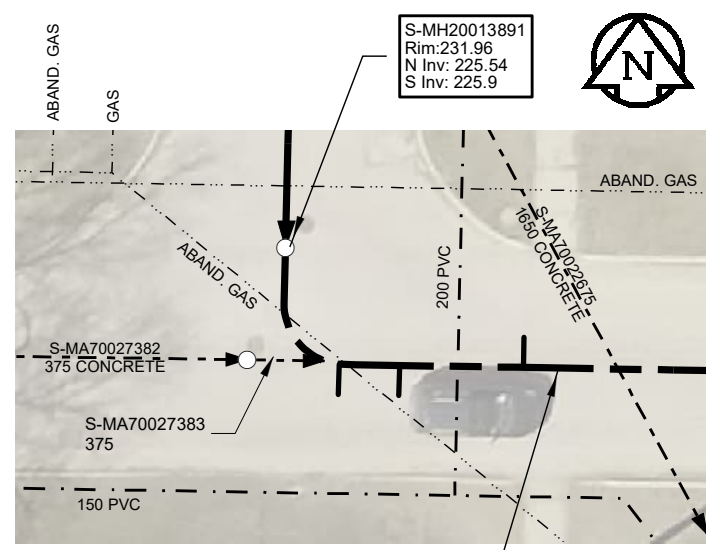


SEWER JUNCTION INFORMATION FROM SEWER VIDEO INSPECTION			
SEWER ID S-MA20015405			
Reference MH	Distance	DIA	Clock
S-MH20013891	004.8	375	04
-	006.8	100	01
-	010.9	100	11



ENLARGED PLAN  
SCALE: 1:250



**ENGINEERS  
GEOSCIENTISTS  
MANITOBA**  
Certificate of Authorization  
AECOM Canada Ltd.  
No. 4671 Date: 23/09/06

**Traffic Controls**  
Regional Street Lane Closure Required: No  
Impacted Regional St: N/A

**General Requirements:**  
Residential Street Restrictions

FOR INDEX SEE  
13377

**METRIC**  
WHOLE NUMBERS INDICATE MILLIMETRES  
DECIMALIZED NUMBERS INDICATE METRES  
0 2.5 5 10 15 20  
Metres

LOCATION APPROVED UNDERGROUND STRUCTURES			
SUPR. U/G STRUCTURES	DATE		
<b>NOTE:</b> LOCATION OF UNDERGROUND STRUCTURES AS SHOWN ARE BASED ON THE BEST INFORMATION AVAILABLE. BUT NO GUARANTEE IS GIVEN THAT ALL EXISTING UTILITIES ARE SHOWN OR THAT THE GIVEN LOCATIONS ARE EXACT. CONFIRMATION OF EXISTENCE AND EXACT LOCATION OF ALL SERVICES MUST BE OBTAINED FROM THE INDIVIDUAL UTILITIES BEFORE PROCEEDING WITH CONSTRUCTION.			
NO.	REVISIONS	YY/MM/DD	BY
0	ISSUED FOR TENDER	23/09/06	ES

DESIGNED BY	CHECKED BY
TB	CM
DRAWN BY	APPROVED BY
ES	CM
HOR. SCALE	VERT. SCALE
1:750	N/A
DATE	DATE
	23-09-24

**AECOM**

DESIGNED BY: TB  
CHECKED BY: CM  
DRAWN BY: ES  
APPROVED BY: CM  
HOR. SCALE: 1:750  
VERT. SCALE: N/A  
DATE: 23-09-24

PROFESSIONAL'S SEAL

CONSULTANT DRAWING NO.  
60703774\_2023 Lining-R0.mxd

**THE CITY OF WINNIPEG**  
Winnipeg WATER AND WASTE DEPARTMENT

**2023 SEWER RENEWALS BY CIPP LINING**  
**CONTRACT 6**  
**S-MA20015405**  
**PRESTON AVE**  
PRESTON AVE TO MH AT CANORA ST(W.LEG) TO MH AT CANORA ST(E.LEG)

SHEET 6 OF 8  
CITY DRAWING NUMBER  
**13381** REV 0

AECOM REVIEW DRFT CHK

FILE NAME: Saved By:

PLOT DATE:

TENDER No. 600-2023  
CONTRACT NUMBER:

FILE PATH:  
FILE NAME: 60703774\_2023 Lining-R0.mxd