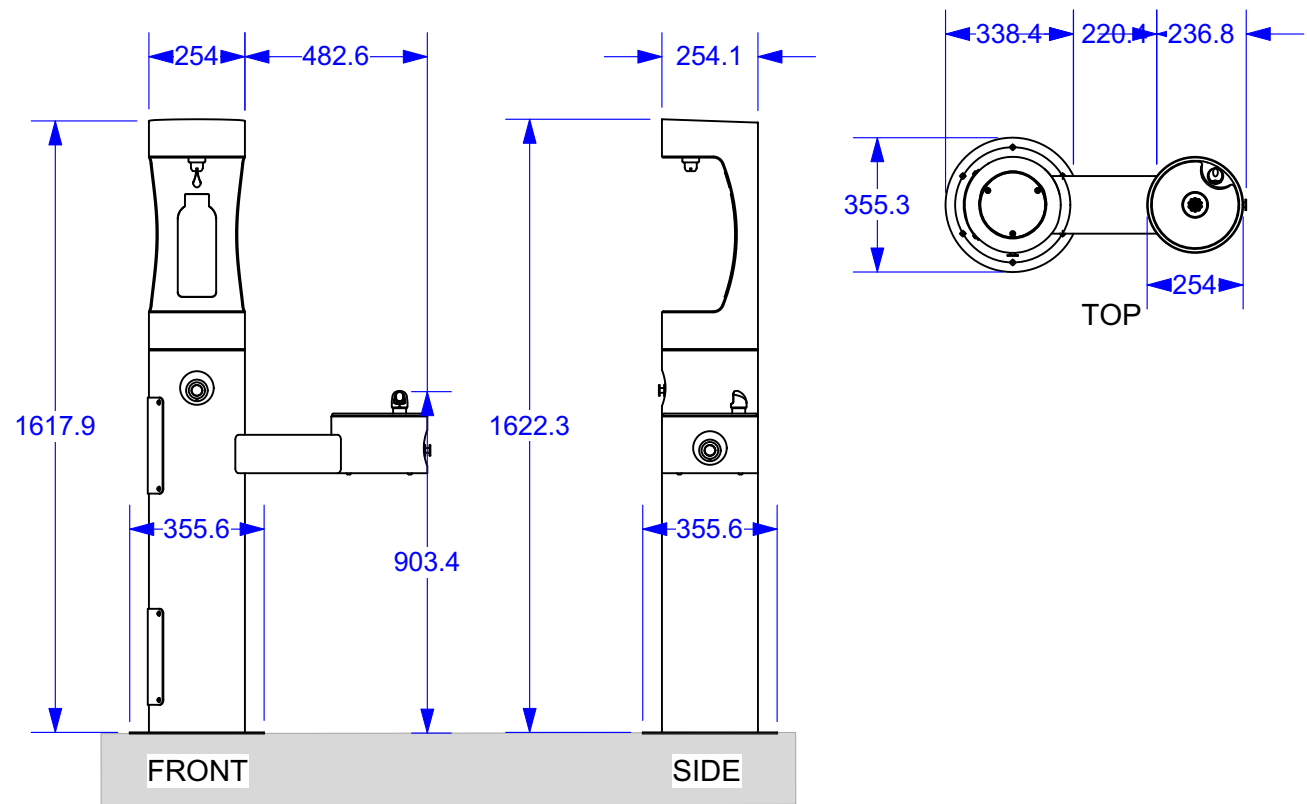


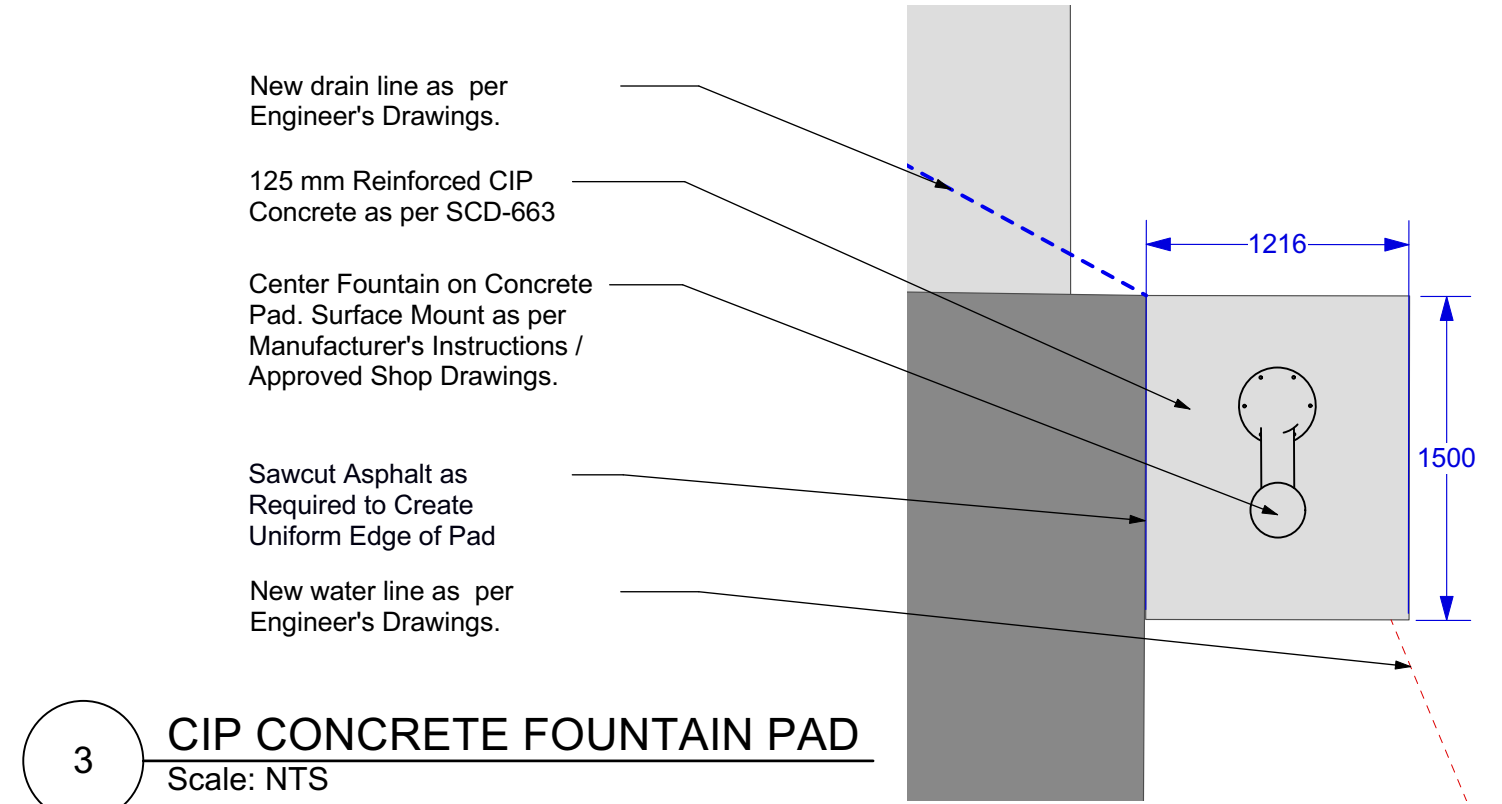
2 CIP CONCRETE FOUNTAIN PAD (SECTION)
Scale: 1:10

NOTES:

1. THE CONTRACTOR SHALL OBTAIN ALL NECESSARY PERMITS, PAY ALL NECESSARY FEES AND GIVE ALL NECESSARY NOTICES.
2. CONTRACTOR SHALL TAKE PRECAUTIONARY STEPS TO PROTECT EXISTING TREES WITHIN THE LIMITS OF ACTIVITIES AS OUTLINED IN THE SPECIFICATIONS
3. CONTRACTOR TO CONFIRM THE LOCATION OF ALL UTILITIES/SERVICES IN THE FIELD PRIOR TO CONSTRUCTION.
4. THE CONTRACTOR SHALL PROVIDE CONSTRUCTION LAYOUT THROUGHOUT THE PROJECT. **WATER SERVICE, WATER STATION, AND CONCRETE PAD LAYOUT BE APPROVED PRIOR TO CONSTRUCTION.**
5. THE CONTRACTOR SHALL MAINTAIN ONE SET OF PLANS ON SITE IN WHICH THE CONTRACTOR SHALL CLEARLY NOTE ALL AS-BUILT INFORMATION AS THE PROJECT PROGRESSES.
6. RESTORATION OF THE SITE TO EQUAL OR BETTER CONDITION TO BE COMPLETED IMMEDIATELY FOLLOWING CONSTRUCTION ACTIVITIES AT CONTRACTORS EXPENSE.
7. INSTALL TEMPORARY CONSTRUCTION FENCING AROUND CONSTRUCTION AREA.
8. THE CONTRACTOR SHALL PREPARE AND SUBMIT SHOP DRAWINGS FOR REVIEW TO THE CONTRACT ADMINISTRATOR THAT SHOW THE MATERIALS TO BE USED AND THE INTENT OF THE INSTALLATION OF THE DRINKING WATER STATION, WATER SUPPLY AND DISCHARGE LINES, WASTE TRAP, CLEANOUT, BLOWOUT VALVE, IN-LINE FILTRATION SYSTEM AND CONNECTION POINTS TO EXISTING SERVICES
9. DRINKING WATER STATION SHALL BE **ELKAY OUTDOOR EZH2O** LOWER BOTTLE FILLING STATION, BI-LEVEL PEDESTAL , NON-FILTERED, NON-REFRIGERATED, **MODEL #: LK4420BF1UFRK - FREEZE RESISTANT. COLOUR: BLUE.**
10. CONCRETE PAD TO MATCH EXISTING GRADES.
11. DIMENSIONS ARE IN MM.



1 ELKAY OUTDOOR EZH2O FOUNTAIN/BOTTLE STATION
Scale: 1:20



3 CIP CONCRETE FOUNTAIN PAD
Scale: NTS

CONTRACTOR TO CONFIRM ALL DIMENSIONS AND REPORT ANY DISCREPANCIES TO CONTRACT ADMINISTRATOR PRIOR TO CONSTRUCTION. LOCATION OF UNDERGROUND STRUCTURES AS SHOWN ARE BASED ON THE BEST INFORMATION AVAILABLE BUT NO GUARANTEE IS GIVEN THAT ALL EXISTING UTILITIES ARE SHOWN OR THAT THE GIVEN LOCATIONS ARE EXACT. CONFIRMATION OF EXISTENCE AND EXACT LOCATION OF ALL SERVICES MUST BE OBTAINED FROM THE INDIVIDUAL UTILITIES BEFORE PROCEEDING WITH CONSTRUCTION.



THE CITY OF WINNIPEG
Planning, Property and Development Department
Planning and Land Use Division
Unit 15 - 30 Fort Street, Winnipeg, MB, (R3C 4X5)

DESIGNED BY	IM	CHECKED BY	
DRAWN BY	IM/IL	APPROVED BY	
HORIZ. SCALE			
VERT. SCALE			
DATE	July 2023		

MANAGER, PARK AND OPEN SPACES	DATE
MANAGER, PLANNING AND LAND USE DIVISION	DATE

DRAWING TITLE GIIZHIGOOWEYAABIWE PARK Park Redevelopment DRINKING FOUNTAIN DETAILS
SITE ADDRESS 242 Lizzie Street

DRAWING NO. L.2-F-2
BID OPPORTUNITY NO. 372-2023