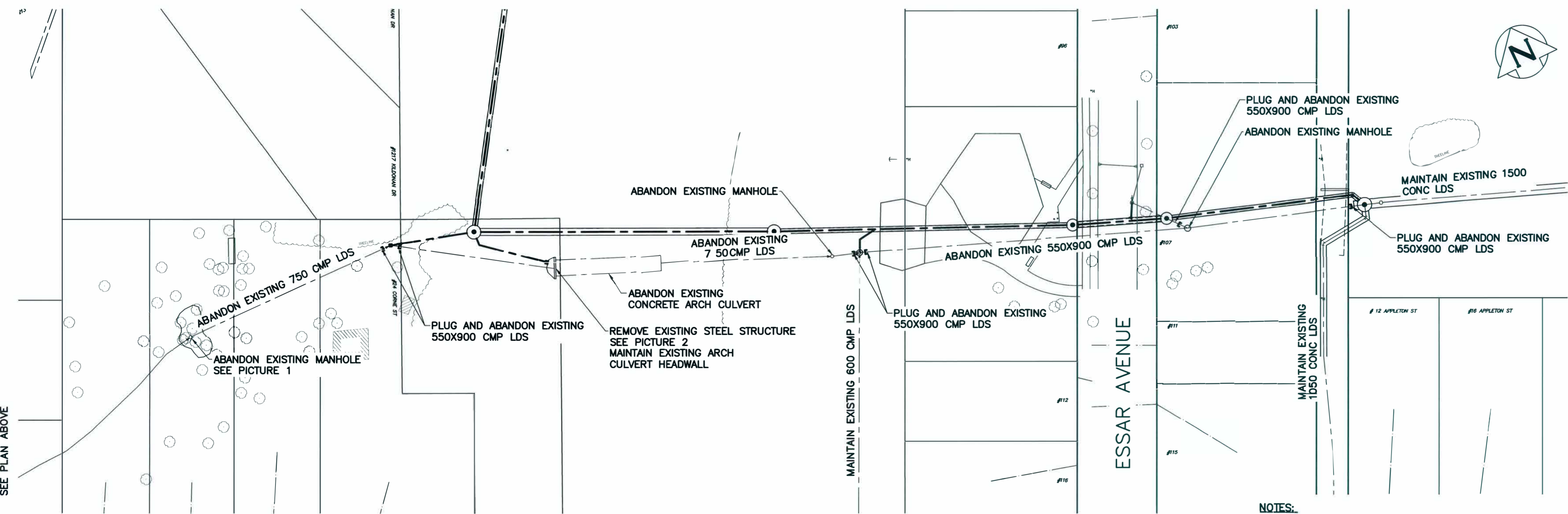


PLAN
SCALE 1:500



PICTURE 1: EXISTING MANHOLE TO BE ABANDONED



PLAN
SCALE 1:500



PICTURE 2: EXISTING STEEL STRUCTURE TO BE REMOVED AND DISPOSED OF. MAINTAIN CONCRETE HEADWALL



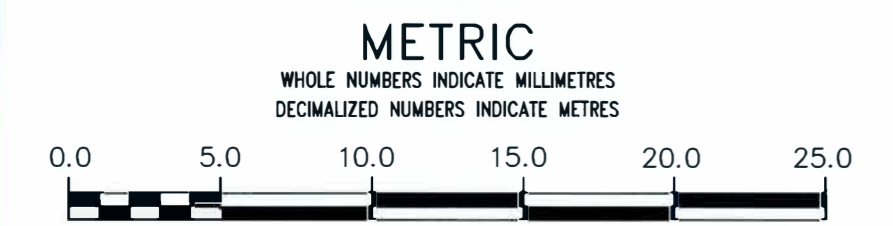
PICTURE 3: CONCRETE FILLED LDS TO BE REMOVED AND DISPOSED OF

NOTES:

1. ABANDON EXISTING LDS AND ARCH CULVERT BY FILLING WITH CEMENT STABILIZED FLOWABLE FILL IN ACCORDANCE WITH CW 2130 AND SPECIFICATION E22.
2. ABANDON EXISTING CATCH BASINS AND MANHOLES BY REMOVING COVER AND BARREL TO WITHIN 1.2m OF EXISTING GROUND IN ACCORDANCE WITH CW 2130.
3. REFER TO DRAWINGS LD-12122 TO LD-12125 FOR ABANDONMENT OF EXISTING LDS ON KILDONAN DRIVE.
4. SEVERAL MANHOLES AND SECTIONS OF LDS PIPE TO BE ABANDONED ARE ON PRIVATE PROPERTY. CONTRACTOR TO COORDINATE ACCESS TO PRIVATE PROPERTY WITH INDIVIDUAL HOME OWNERS AND THE CONTRACT ADMINISTRATOR.

ISSUED FOR TENDER
NOT TO BE USED FOR CONSTRUCTION

FOR INDEX PAGE SEE
DWG LD-12121



ES ENGINEERS
GEOSCIENTISTS
MANITOBA
Certificate of Authorization
KGS Group
No. 245

**PROPERTY LIMITS
DELINEATION**
DELINATION OF PROPERTY LIMITS AS SHOWN ON THIS DWG DOES NOT REPRESENT A "LEGAL SURVEY". KGS GROUP MAKES NO REPRESENTATION OR WARRANTY AS TO THE ACCURACY OF PROPERTY LIMITS DELINEATED ON THIS DWG, NOR ON THE DIMENSIONAL ACCURACY OF DWG FEATURES RELATIVE TO THOSE PROPERTY LIMITS.

**LOCATION APPROVED
UNDERGROUND STRUCTURES**
SUPV. U/G STRUCTURES COMMITTEE DATE:
NOTE:
LOCATION OF UNDERGROUND STRUCTURES AS SHOWN ARE BASED ON THE BEST INFORMATION AVAILABLE BUT NO GUARANTEE IS GIVEN THAT ALL EXISTING UTILITIES ARE SHOWN OR THAT THE GIVEN LOCATIONS ARE EXACT. CONFIRMATION OF EXISTENCE AND EXACT LOCATION OF ALL SERVICES MUST BE OBTAINED FROM THE INDIVIDUAL UTILITIES BEFORE PROCEEDING WITH CONSTRUCTION.

B.M. ELEV.	NO.	REVISIONS	DATE	BY
	A	ISSUED FOR TENDER	2023 05 10	BT

KGS GROUP		DESIGNED BY: GH	CHECKED BY: TLE
		DRAWN BY: GH	APPROVED BY: RBO
SCALE: HORIZONTAL 1:250 VERTICAL 1:50		RELEASED FOR CONSTRUCTION	
PLOT DATE: 2023 05 10		DATE: 2023 05 10	

ENGINEER'S SEAL
PROVINCE OF MANITOBA
G.T. HEINRICHS
Member
38162
M.P. 2023
REGISTERED PROFESSIONAL ENGINEER
CONSULTANT DRAWING NUMBER
22-0107-024-C15

THE CITY OF WINNIPEG
WATER AND WASTE DEPARTMENT
ENGINEERING DIVISION
McLEOD CREEK DRAINAGE IMPROVEMENTS
McLEOD CREEK LDS
ABANDONMENT PLAN
SHEET 13 OF 16
CITY DRAWING NUMBER
LD-12132