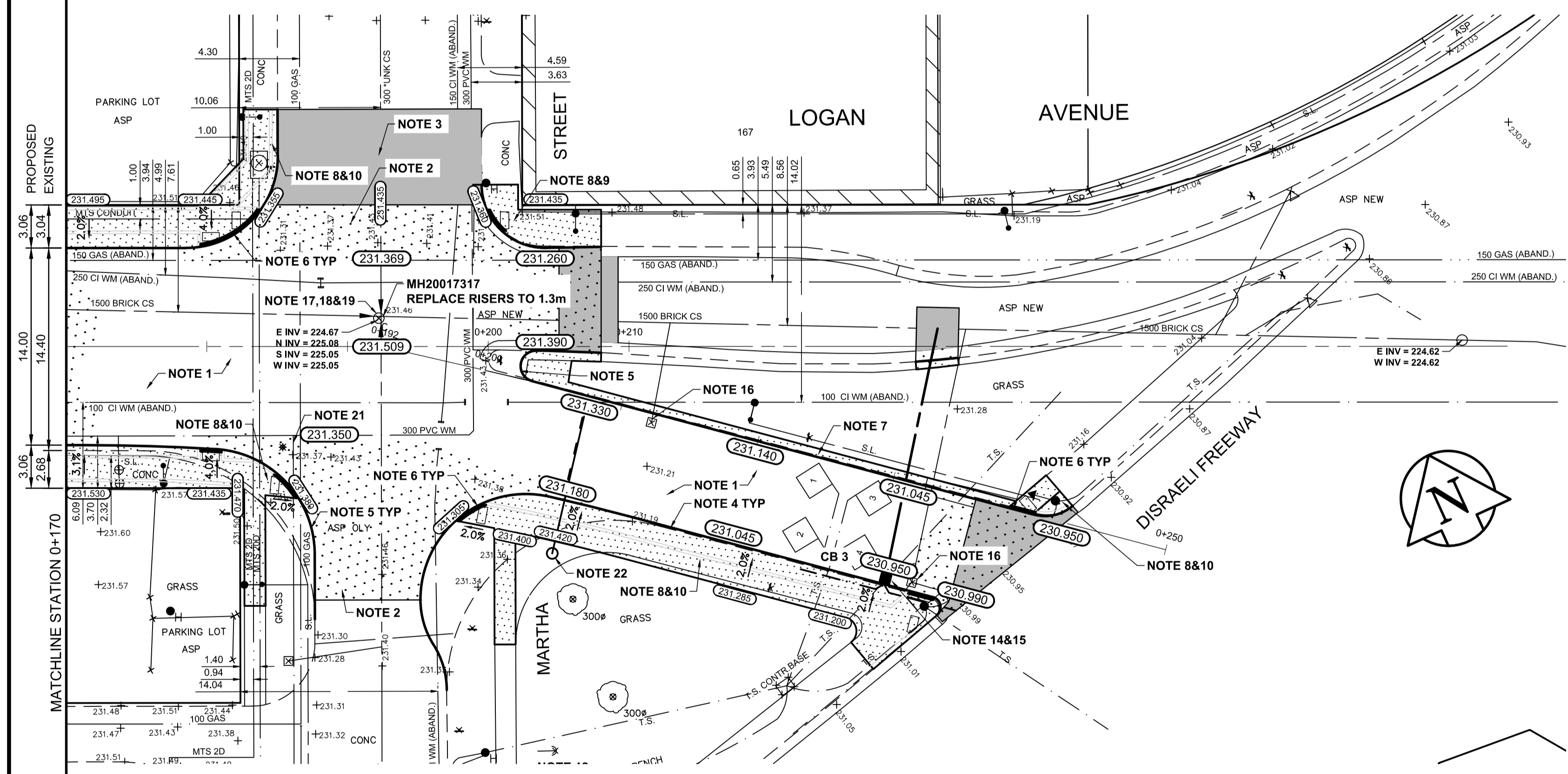


CB	SIZE	RIM	250Ø INVERT	LEAD LENGTH/SLOPE	150Ø INVERT	MAIN OBVERT
CB 3	1800	230.950	229.300 N	18.2m @ 17%	230.050	226.14±

- REFERENCE NOTES:**
- PAVEMENT DIMENSIONS ARE TO BACK OF CURB
 - BASELINE IS CENTRE LINE ROADWAY
 - PROPERTY LINES OBTAINED FROM CITY OF WINNIPEG L.B.I.S., AND NO SCALE FACTOR WAS APPLIED
 - REFER TO AECOM FIELD BOOK NO. 5137
- CONSTRUCTION NOTES:**
- REMOVE EXISTING PAVEMENT AND CONSTRUCT NEW 250mm PLAIN DOWELLED CONCRETE PAVEMENT
 - REMOVE EXISTING PAVEMENT AND CONSTRUCT NEW 200mm REINFORCED CONCRETE PAVEMENT
 - REMOVE EXISTING ASPHALT PAVEMENT AND PLACE NEW ASPHALT PAVEMENT TYPE IA
 - CONSTRUCT NEW CONCRETE BARRIER CURB (180mm HT. INTEGRAL)
 - CONSTRUCT NEW MODIFIED CONCRETE BARRIER CURB (180mm HT. INTEGRAL)
 - CONSTRUCT NEW CONCRETE CURB RAMP (10-12mm HT. INTEGRAL)
 - CONSTRUCT NEW CONCRETE SPLASH STRIP (100mm THICK SEPARATE)
 - REMOVE EXISTING CONCRETE SIDEWALK
 - CONSTRUCT NEW 100mm CONCRETE SIDEWALK
 - CONSTRUCT NEW 100mm CONCRETE SIDEWALK c/w BLOCKOUT AND PAVING STONES
 - RENEW EXISTING 100mm CONCRETE SIDEWALK
 - INSTALL NEW DETECTABLE WARNING TILE
 - INSTALL NEW CATCH BASIN c/w CURB AND GUTTER INLET (SD-024) AND CONNECT NEW 250mm PVC PIPE TO EXISTING 300mm COMBINED SEWER
 - INSTALL NEW CATCH BASIN c/w CURB AND GUTTER INLET (SD-024) AND CONNECT NEW 250mm PVC PIPE TO EXISTING 1500mm BRICK COMBINED SEWER
 - INSTALL NEW 150mm SUBDRAIN 6.0m ON EACH SIDE OF CATCH BASIN
 - REMOVE EXISTING CATCH BASIN AND ABANDON LEAD
 - ADJUST EXISTING MANHOLE/CATCH BASIN TO GRADE
 - REMOVE EXISTING FRAME AND COVER AND INSTALL NEW FRAME AND COVER (AP-006/AP-007)
 - INSTALL NEW CAST IRON RISER RING
 - ADJUST EXISTING WATER VALVE TO GRADE
 - INSULATE EXISTING WATER SERVICE UNDER PAVEMENT
 - INSTALL NEW OVERHEAD SIGN SUPPORT STRUCTURE



ENGINEERS GEOSCIENTISTS MANITOBA
Certificate of Authorization
AECOM Canada Ltd.
No. 4671 Date: 05/23/23

METRIC
WHOLE NUMBERS INDICATE MILLIMETRES
DECIMALIZED NUMBERS INDICATE METRES

EXISTING	LEGEND - PLAN	PROPOSED	EXISTING	LEGEND - PLAN	PROPOSED	EXISTING	LEGEND - PROFILE	PROPOSED
150 mm W.M.	WATERMAIN	150 mm W.M.	HYDRO	M.T.S.	—	—	—	—
300mm L.D.S.	LAND DRAINAGE SEWER	300mm L.D.S.	CONCRETE	CONCRETE	—	—	—	—
250mm W.W.S.	WASTEWATER SEWER	250mm W.W.S.	ASPHALT	ASPHALT	—	—	—	—
○	MANHOLE	●	PROPERTY LINE	PROPERTY LINE	—	—	—	—
□	CATCH BASIN	■	SURVEY BAR	SURVEY BAR	—	—	—	—
▽	CATCH PIT	▼	ELEVATION	ELEVATION	(235.750)	—	—	—
—	JUNCTIONS	—	TREE	TREE	—	—	—	—
—	CULVERT	—	SIDEWALK RAMP	SIDEWALK RAMP	—	—	—	—
—	GAS	—	CONCRETE SIDEWALK	CONCRETE SIDEWALK	—	—	—	—
—	—	—	FENCE	FENCE	—	—	—	—

LOCATION APPROVED UNDERGROUND STRUCTURES

SUPV. U/G STRUCTURES COMMITTEE DATE

NOTE:
LOCATION OF UNDERGROUND STRUCTURES AS SHOWN ARE BASED ON THE BEST INFORMATION AVAILABLE. BUT NO GUARANTEE IS GIVEN THAT ALL EXISTING UTILITIES ARE SHOWN OR THAT THE GIVEN LOCATIONS ARE EXACT. CONFIRMATION OF EXISTENCE AND EXACT LOCATION OF ALL SERVICES MUST BE OBTAINED FROM THE INDIVIDUAL UTILITIES BEFORE PROCEEDING WITH CONSTRUCTION.

B.M. ZONE: 35 # 01 - 3-F - Bolt in W. wall of Concourse, ELEV. C.P.R. Station, Higgins Ave., 15.5 m N. of S.W. Corn. of Concourse.

EL: 233.054

DESIGNED BY	AA	CHECKED BY	BC
DRAWN BY	AA	APPROVED BY	RC
HOR. SCALE:	1:250	RELEASED FOR CONSTRUCTION BY:	
VERTICAL:	1:10	DATE	05/12/23

CONSULTANT DRAWING NO. CT-05

ENGINEER'S SEAL

THE CITY OF WINNIPEG
PUBLIC WORKS DEPARTMENT
ENGINEERING DIVISION

2023 REGIONAL STREET
RENEWAL PROGRAM

LOGAN AVENUE - MAIN STREET TO DISRAELI FREEWAY
PAVEMENT RECONSTRUCTION
PLAN/PROFILE - STATION 0+170 TO DISRAELI FREEWAY

CITY DRAWING NUMBER P-3570-05
SHEET 05 OF 07