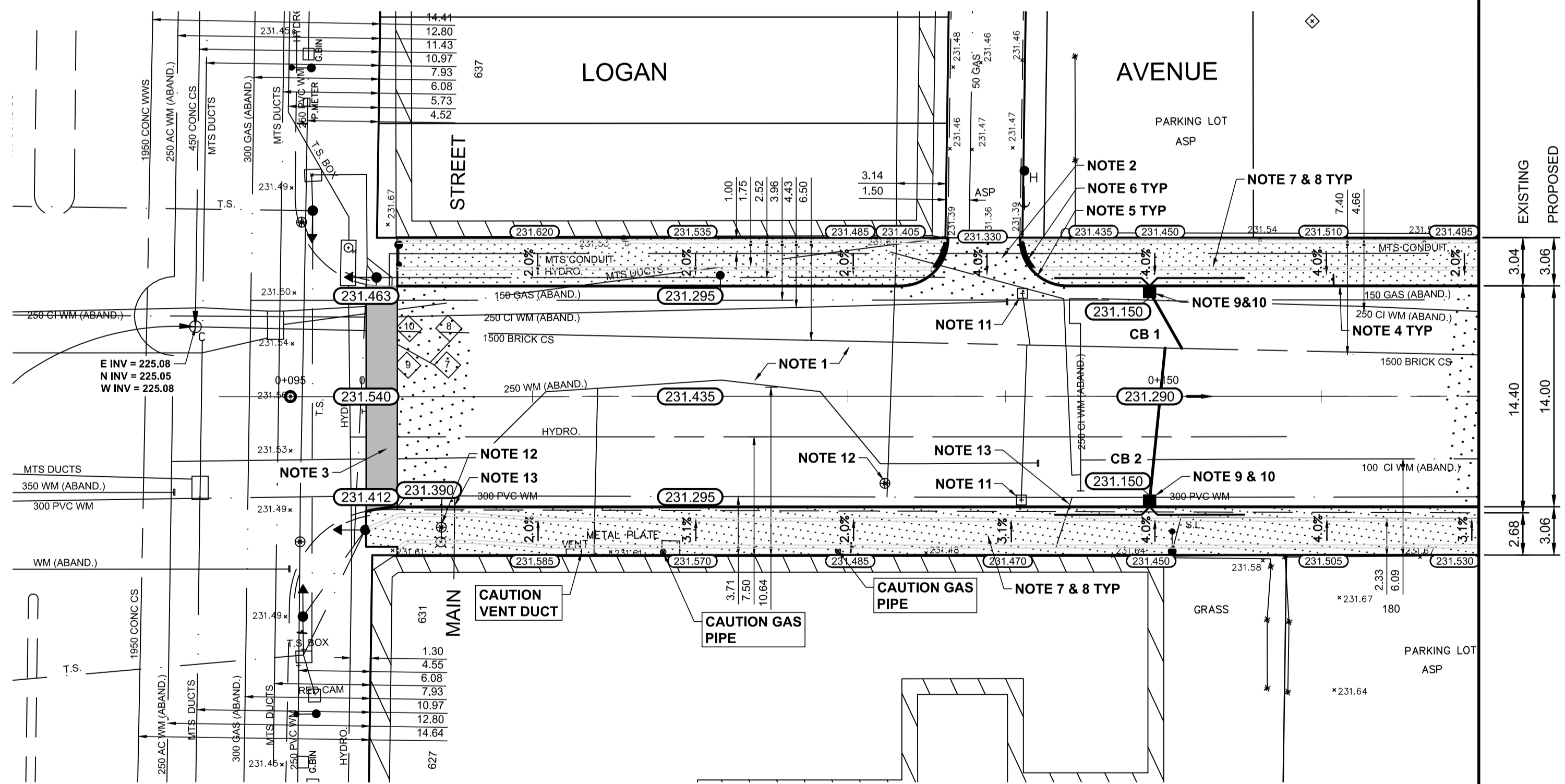
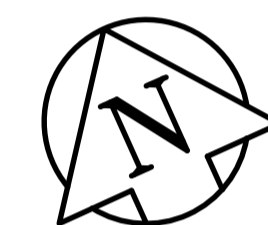


LOGAN AVE. TYPICAL CROSS SECTION
N.T.S.



REFERENCE NOTES:

- A. PAVEMENT DIMENSIONS ARE TO BACK OF CURB
- B. BASELINE IS CENTRE LINE ROADWAY
- C. PROPERTY LINES OBTAINED FROM CITY OF WINNIPEG L.B.I.S., AND NO SCALE FACTOR WAS APPLIED
- D. REFER TO AECOM FIELD BOOK NO. 5137

CONSTRUCTION NOTES:

- 1. REMOVE EXISTING PAVEMENT AND CONSTRUCT NEW 250mm PLAIN DOWELLED CONCRETE PAVEMENT
- 2. REMOVE EXISTING PAVEMENT AND CONSTRUCT NEW 200mm REINFORCED CONCRETE PAVEMENT
- 3. REMOVE EXISTING PAVEMENT AND PLACE NEW ASPHALT PAVEMENT TYPE IA
- 4. CONSTRUCT NEW CONCRETE BARRIER CURB (180mm HT. INTEGRAL)
- 5. CONSTRUCT NEW MODIFIED CONCRETE BARRIER CURB (180mm HT. INTEGRAL)
- 6. CONSTRUCT NEW CONCRETE CURB RAMP (10-12mm HT. INTEGRAL)
- 7. REMOVE EXISTING CONCRETE SIDEWALK
- 8. CONSTRUCT NEW 100mm CONCRETE SIDEWALK c/w BLOCKOUT AND PAVING STONES
- 9. INSTALL NEW CATCH BASIN c/w CURB AND GUTTER INLET (SD-024) AND CONNECT NEW 250mm PVC PIPE TO EXISTING 1500mm BRICK COMBINED SEWER
- 10. INSTALL NEW 150mm SUBDRAIN 6.0m ON EACH SIDE OF CATCH BASIN
- 11. REMOVE EXISTING CATCH BASIN AND ABANDON LEAD
- 12. ADJUST EXISTING WATER VALVE TO GRADE
- 13. INSULATE EXISTING WATER SERVICE UNDER PAVEMENT

CB	SIZE	RIM	250Ø INVERT	LEAD LENGTH/SLOPE	150Ø INVERT	MAIN OBVERT
CB 1	1800	231.150	229.500 S	4.1m @ 72%	230.250	226.56±
CB 2	1800	231.150	229.500 N	9.9m @ 30%	230.250	226.56±

**ENGINEERS
GEO-SCIENTISTS
MANITOBA**
Certificate of Authorization
AECOM Canada Ltd.
No. 4671 Date: 05/23/23

METRIC
WHOLE NUMBERS INDICATE MILLIMETRES
DECIMALIZED NUMBERS INDICATE METRES

EXISTING	LEGEND - PLAN	PROPOSED	EXISTING	LEGEND - PLAN	PROPOSED	EXISTING	LEGEND - PROFILE	PROPOSED
150 mm W.M.	WATERMAIN	150 mm W.M.	HYDRO	M.T.S.	CONCRETE	ASPHALT	PROPERTY LINE	SURVEY BAR
300mm L.D.S.	LAND DRAINAGE SEWER	300mm L.D.S.	250mm W.W.S.	WASTEWATER SEWER	250mm W.W.S.	MANHOLE	CATCH BASIN	CATCH PIT
250mm W.W.S.	JUNCTIONS	CULVERT	GAS	LEGEND - PLAN	PROPOSED	EXISTING	LEGEND - PROFILE	PROPOSED

LOCATION APPROVED UNDERGROUND STRUCTURES
SUPV. U/G STRUCTURES COMMITTEE DATE
NOTE: LOCATION OF UNDERGROUND STRUCTURES AS SHOWN ARE BASED ON THE BEST INFORMATION AVAILABLE. BUT NO GUARANTEE IS GIVEN THAT ALL EXISTING UTILITIES ARE SHOWN OR THAT THE GIVEN LOCATIONS ARE EXACT. CONFIRMATION OF EXISTENCE AND EXACT LOCATION OF ALL SERVICES MUST BE OBTAINED FROM THE INDIVIDUAL UTILITIES BEFORE PROCEEDING WITH CONSTRUCTION.

B.M. ZONE: 35 # 01 - 3-F - Bolt in W. wall of Concourse, ELEV. C.P.R. Station, Higgins Ave., 15.5 m N. of S.W. Corn. of Concourse.
EL: 233.054

NO.	REVISIONS	DATE	BY
0	ISSUED FOR TENDER	05/23/23	RC
A	ISSUED FOR REVIEW	05/12/23	RC

AECOM

DESIGNED BY	AA	CHECKED BY	BC
DRAWN BY	AA	APPROVED BY	RC
HOR. SCALE:	1:250	RELEASED FOR CONSTRUCTION BY:	
VERTICAL:	1:10	DATE	05/12/23

ENGINEER'S SEAL
CONSULTANT DRAWING NO. CT-04

THE CITY OF WINNIPEG
PUBLIC WORKS DEPARTMENT
ENGINEERING DIVISION

2023 REGIONAL STREET RENEWAL PROGRAM
LOGAN AVENUE - MAIN STREET TO DISRAELI FWY PAVEMENT RECONSTRUCTION
PLAN/PROFILE - MAIN STREET TO STATION 0+170

CITY DRAWING NUMBER P-3570-04
SHEET 04 OF 07