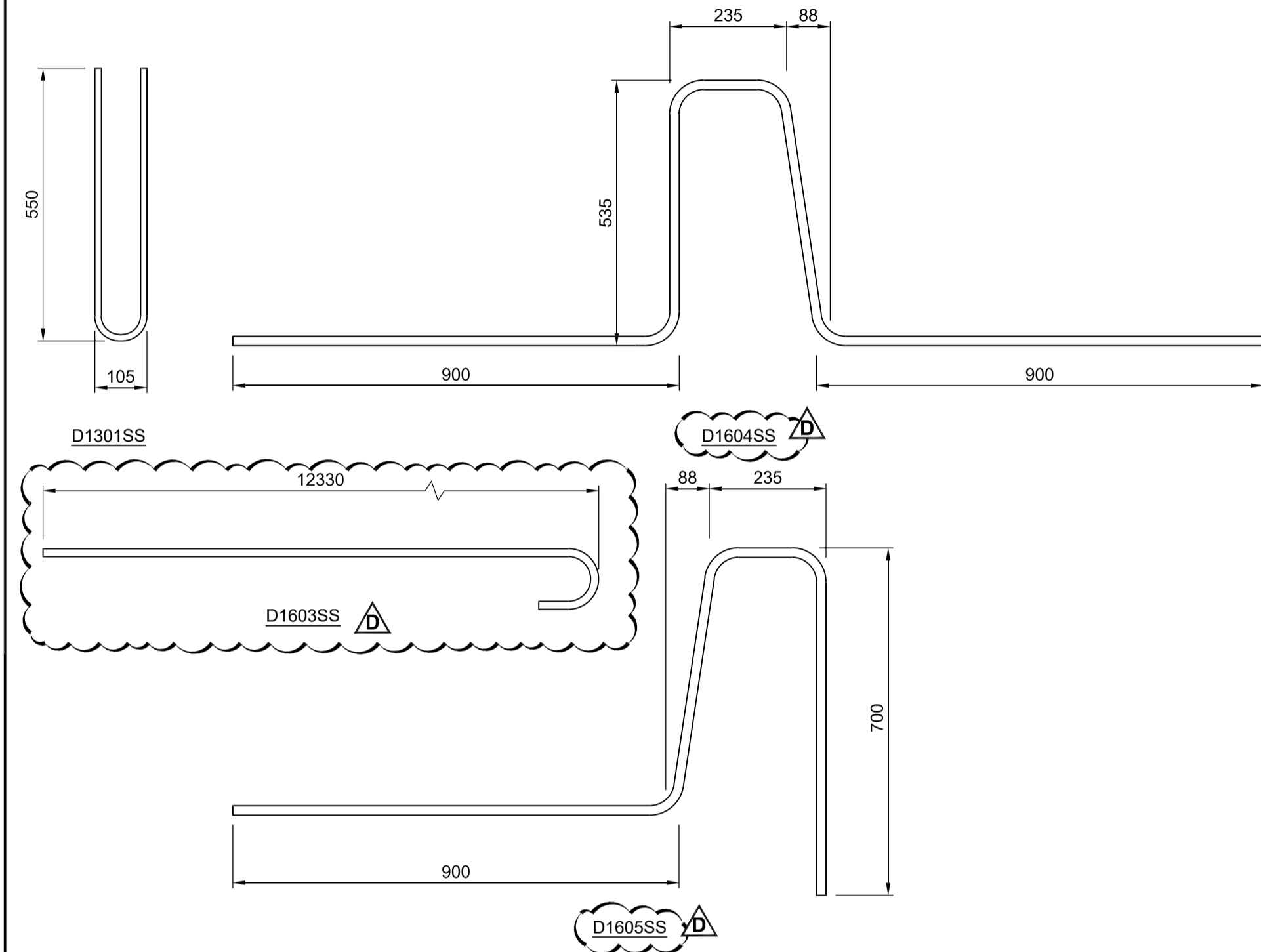


BILL OF REINFORCING STEEL

DECK (D)

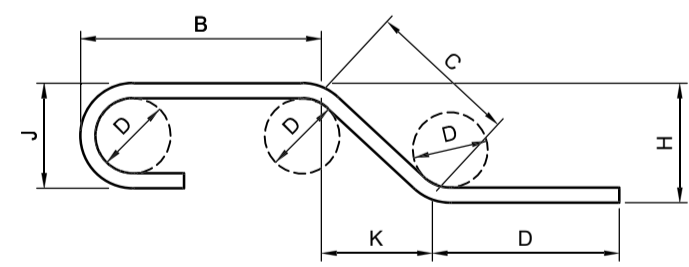
MARK	TYPE	PIN DIAMETER	LENGTH (mm)	NO. BARS	MASS
D1301SS	BENT	75	1205	138	165.29
D1302SS	STR	-	8035	6	47.92
D1601SS	STR	-	8035	86	1072.45
D1602SS	STR	-	7865	43	524.88
D1603SS	BENT	90	12500	138	2677.20
D1604SS	BENT	90	3110	138	666.09
D1605SS	BENT	90	2375	138	508.67
TOTAL REINFORCING STEEL MASS (kg):					5662.49

NOTE:
1. CONFIRM OUT TO OUT WIDTH OF ERECTED GIRDERS PRIOR TO FABRICATION OF BAR D1603SS.



NOTES:

- ALL DIMENSIONS GIVEN IN BENDING DIAGRAM ARE OUT-TO-OUT, EXCEPT RADII AND EXTENSIONS ON 90°, 135° & 180° HOOKS. EXTENSIONS ON 90°, 135° & 180° HOOKS ARE THE "A" OR "G" DIMENSIONS FOR THE STANDARD 90°, 135° & 180° HOOKS REFERENCED FROM THE RSIC "MANUAL OF STANDARD PRACTICE". RADII ARE INSIDE DIMENSIONS. ALL REINFORCING STEEL SHALL CONFORM TO THE LATEST EDITION OF CAN/CSA-S6 CLAUSE 8.14 "DETAILS OF REINFORCEMENT AND SPECIAL DETAILING PROVISIONS", UNLESS NOTED OTHERWISE IN THE BILL OF REINFORCING STEEL.
- ALL REINFORCING STEEL SHALL BE DEFORMED STEEL, UNLESS NOTED OTHERWISE IN THE BILL OF REINFORCING STEEL.
- ALL REINFORCING WITH SUFFIX "SS" SHALL BE STAINLESS STEEL CONFORMING TO THE REQUIREMENTS OF ASTM A955M, 300 SERIES, MINIMUM GRADE 420, OF ONE OF THE FOLLOWING UNS DESIGNATIONS: S31653, S31803, OR S32304.
- ALL REINFORCING STEEL SHALL CONFORM TO THE LATEST EDITION OF CAN/CSA G30.18 "CARBON STEEL BARS FOR CONCRETE REINFORCEMENT" GRADE 400W, UNLESS NOTED OTHERWISE.
- LIKE BARS SHALL BE BUNDLED, SECURELY TIED AND IDENTIFIED AS TO MARK AND SITE NO. BY APPROPRIATE MEANS. ALL OTHER ITEMS TO BE IDENTIFIED IN A SIMILAR FASHION.
- UNLESS OTHERWISE NOTED DIAMETER "D" IS THE SAME ALL HOOKS AND BENDS ON A BAR. WHERE SLOPE DIFFERS FROM 45° DIMENSIONS "H" AND "K" MUST BE SHOWN.
- BILL OF REINFORCING AND BENDING DIAGRAMS DO NOT INCLUDE CHANGES MADE DURING CONSTRUCTION. RECORD DRAWING REINFORCEMENT CHANGES ARE INCLUDED IN THE RESPECTIVE REINFORCING DETAILS.



ENLARGED VIEW BAR BENDING DETAILS



TENDER No. 335-2023

LOCATION APPROVED
UNDERGROUND STRUCTURES

SUPR. U/G STRUCTURES DATE COMMITTEE

NOTE:
LOCATION OF UNDERGROUND STRUCTURES AS SHOWN ARE BASED ON THE BEST INFORMATION AVAILABLE BUT NO GUARANTEE IS GIVEN THAT ALL EXISTING UTILITIES ARE SHOWN OR THAT THE GIVEN LOCATIONS ARE EXACT. CONFIRMATION OF EXISTENCE AND EXACT LOCATION OF ALL SERVICES MUST BE OBTAINED FROM THE INDIVIDUAL UTILITIES BEFORE PROCEEDING WITH CONSTRUCTION.

BM 78-009 N.W. Cor. Paddington Rd. & Dakota St., 19 mm dia. x 6.1 m
ELEV. 232.749 m I.B. in Valve Box, 5.5 m S. of N.L. Paddington Rd. & on W.L. of Dakota St., in traffic island.

DESIGNED BY	AGG	CHECKED BY	SAL
DRAWN BY	AS	APPROVED BY	BAP
D	ISSUED FOR ADDENDUM 1	23/08/23	BAP
C	ISSUED FOR TENDER	23/08/02	BAP
B	ISSUED FOR 95% REVIEW	23/06/27	BAP
A	ISSUED FOR 50% REVIEW	23/04/14	BAP
No.	REVISIONS	YYMM/DD	BY



PROFESSIONAL'S SEAL

CONSULTANT FILE NAME
2203665-CBR DD-DECK04.dwg

THE CITY OF WINNIPEG
PUBLIC WORKS DEPARTMENT
ENGINEERING DIVISION

CREEK BEND ROAD BRIDGE REPLACEMENT AND RELATED WORKS

DECK BILL OF REINFORCING

CITY DRAWING NUMBER: B149-23-26
SHEET 26 OF 52
DRAWING NUMBER: 26