

LOCATION APPROVED
UNDERGROUND STRUCTURES COMMITTEE

DATE _____

METRO APPROVAL REC'D.

DATE _____

LOCATION OF UNDERGROUND STRUCTURES AS SHOWN ARE BASED ON BEST INFORMATION AVAILABLE, BUT NO GUARANTEE IS GIVEN THAT ALL EXISTING UTILITIES ARE SHOWN, AND EXACT LOCATIONS OF ALL UNDERGROUND UTILITIES MUST BE CHECKED WITH THE UTILITY CONCERNED BEFORE PROCEEDING WITH CONSTRUCTION.

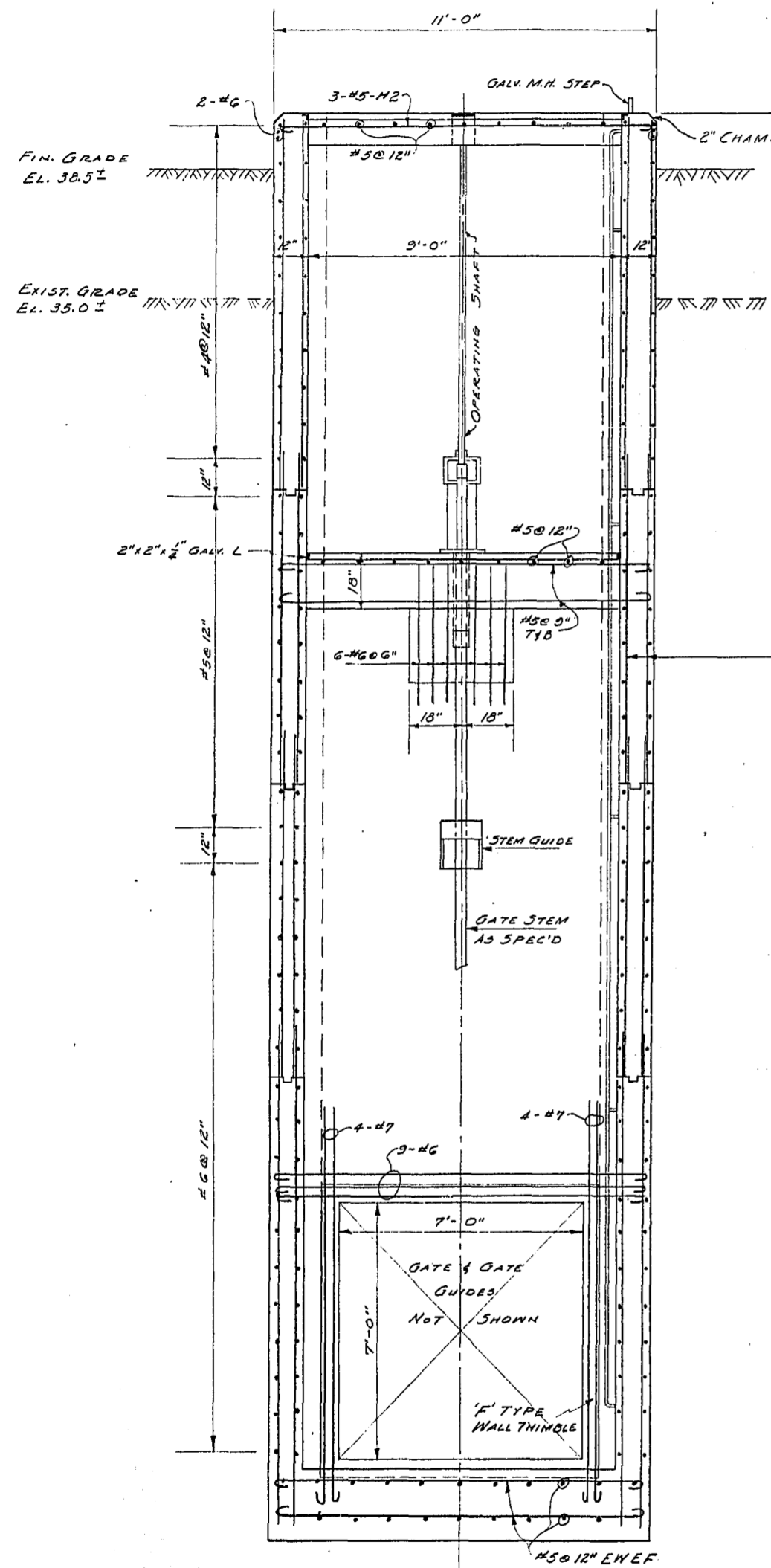
CITY OF WINNIPEG ENGINEERING DEPARTMENT W. C. HARRIS - CHIEF ENGINEER J. E. STYRON - DEPUTY CHIEF ENGINEER	
96" MONO. CONC. STORM RELIEF SEWER IN EASEMENT 15' E.E.L. C.P.R. (PEMBINA MOUNTAIN BRANCH) R/W FROM ACADEMY RD. TO ASSINIBOINE R.	
Drawn by	DATE
Checked by	DATE
Constructed by	DATE
Approved by	DATE
Project Name	
Scale	
Sheet	
Profile View	SC-15-557

FILE # SE10052

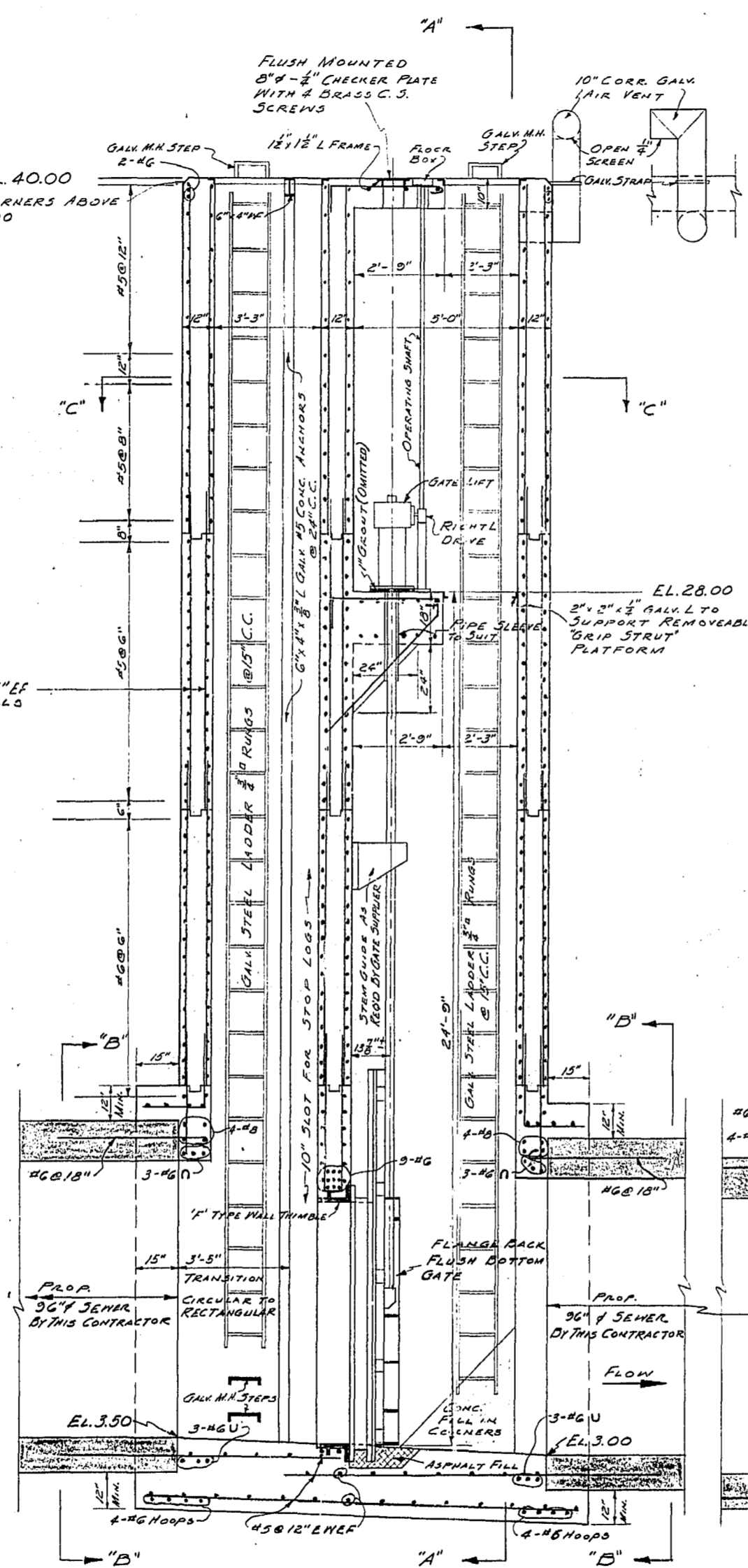
W-723
W-723

APPROVED

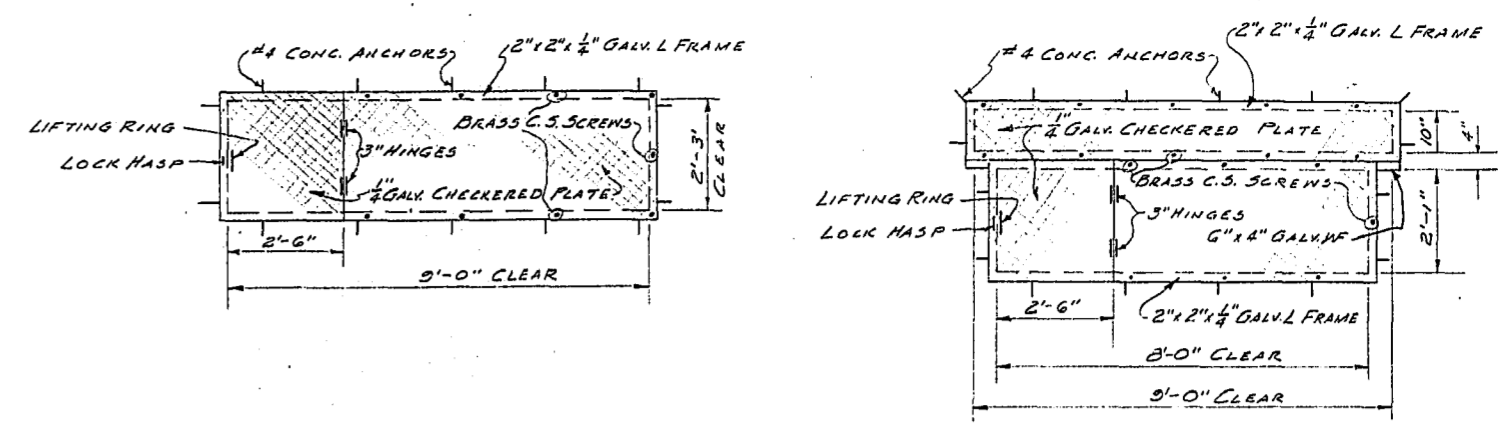
DEC 18 1964



SECTION "A-A"

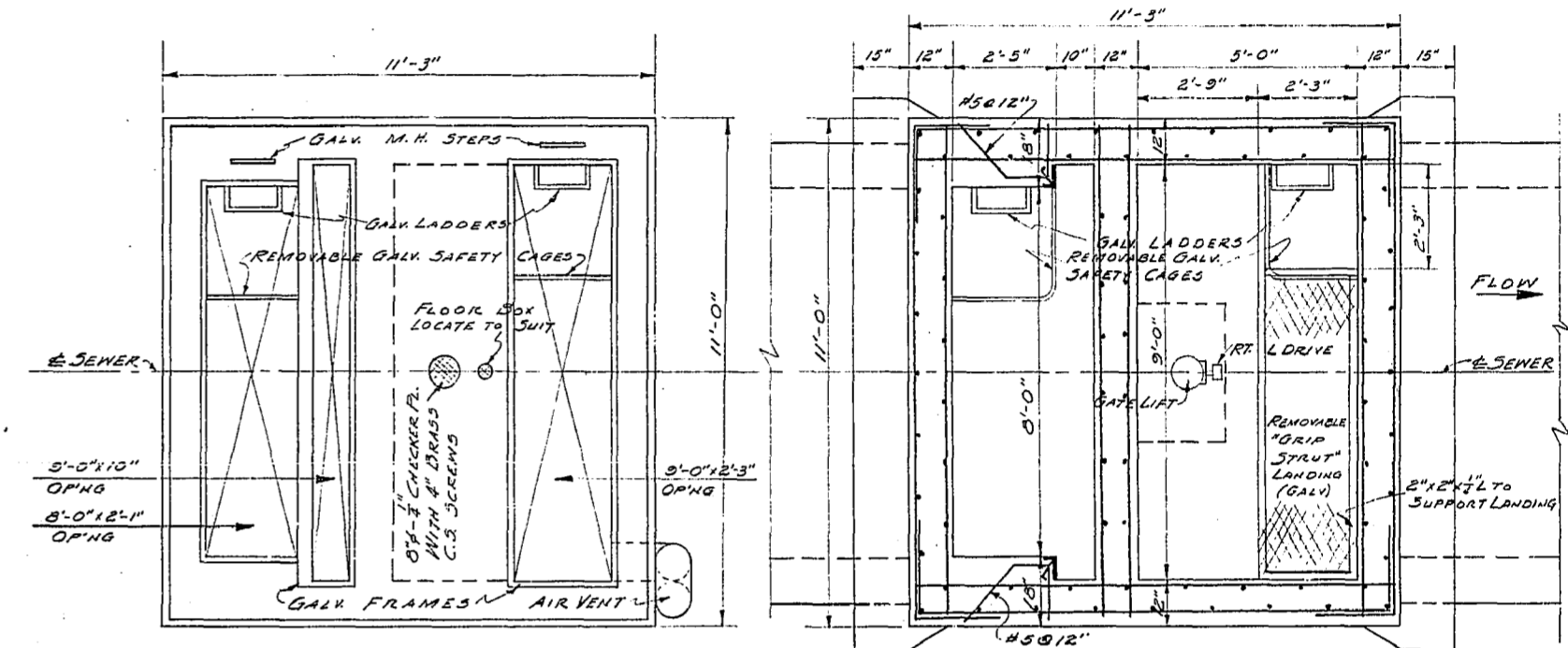


SECTIONAL ELEVATION



HATCH COVERS & FRAMES

NOTE: ALL COVERS TO BE FLUSH WITH TOP OF CONCRETE AT EL. 40.00



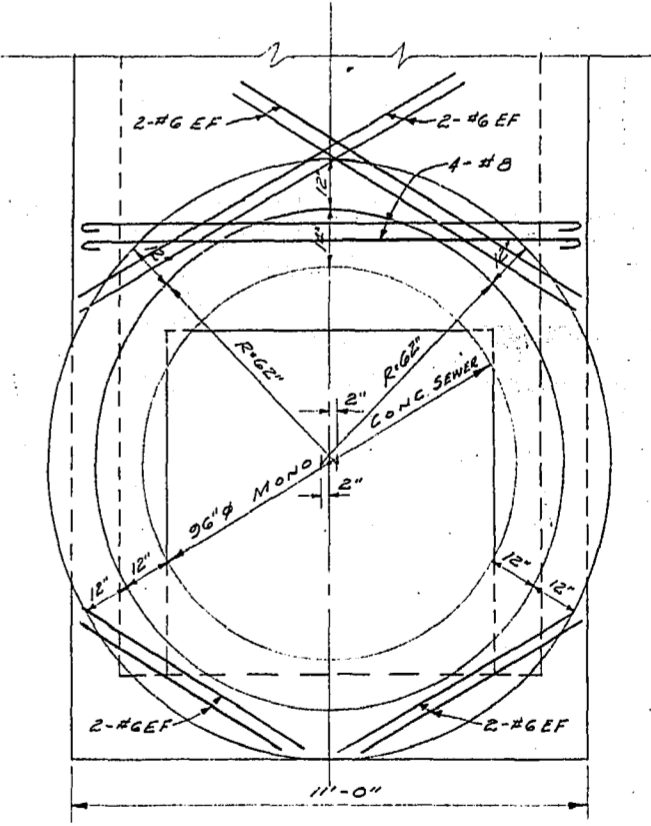
TOP PLAN

SECTION "C-C"

METRO APPROVAL REC'D.

W.W. & N.D. DATE 18-12-64

Approved by: OFFICE OF THE DYKING COMMISSION, 21-12-64, A



SECTION "B-B"

NOTE: ALL STEEL 2 1/2" CLEAR

REVISED AS CONSTRUCTED
BY W.S. DATE JAN. 25/66
CHECKED BY DATE 25 NOV 66

DIST. CODE # 290-022-360

NOTE: DIMENSIONING ACCURATE 1/2"

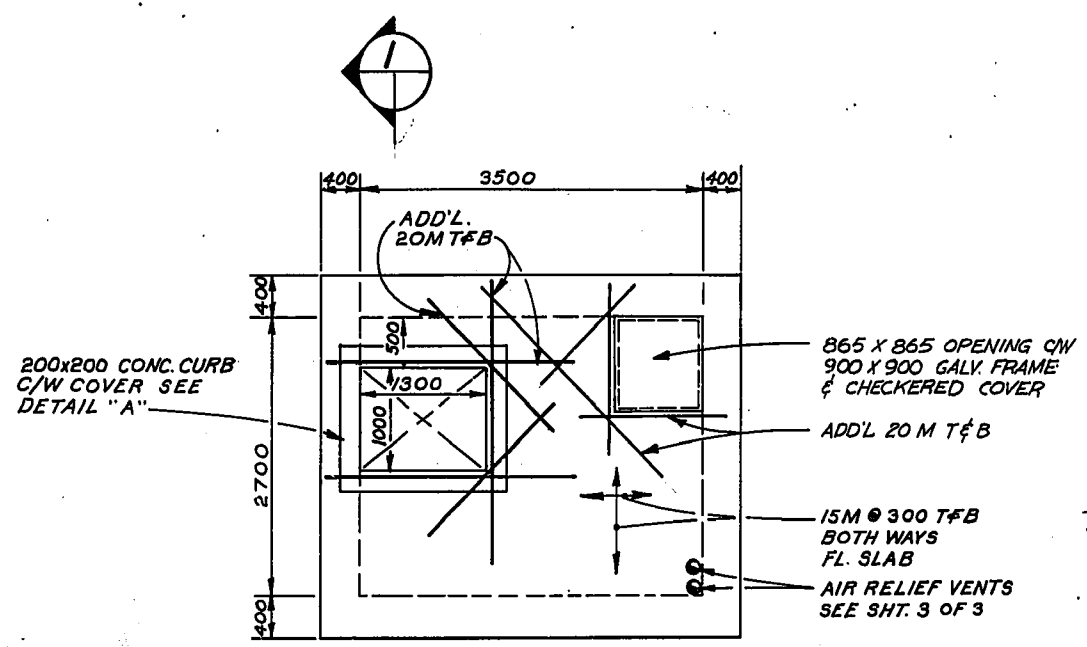
NOTE: LOCATION DRWG SEE DRWG. NO. 5C15557
FILE B-7-K
C.E.D. 65-64
P.D. 64-124



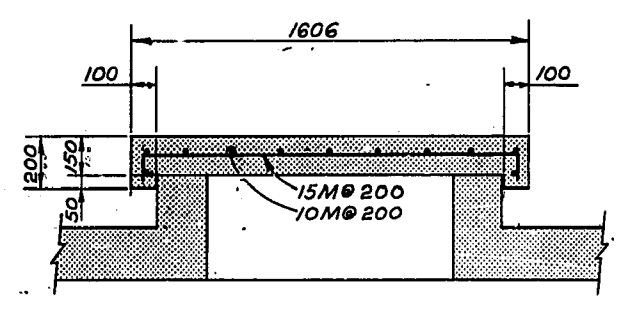
DETAILS OF RENFREW RELIEF GATE CHAMBER

CITY OF WINNIPEG
ENGINEERING DEPARTMENT
W. D. HURST, CITY ENGINEER
J. B. STFIOWSKI, DEPUTY CITY ENGINEER
DRAWN BY H.R. DATE 25-11-64
TRACED BY DATE
CHECKED BY DATE
APPROVED BY DATE
SCALE 3/4" = 1'-0"
DRAWING NO. 5C15558

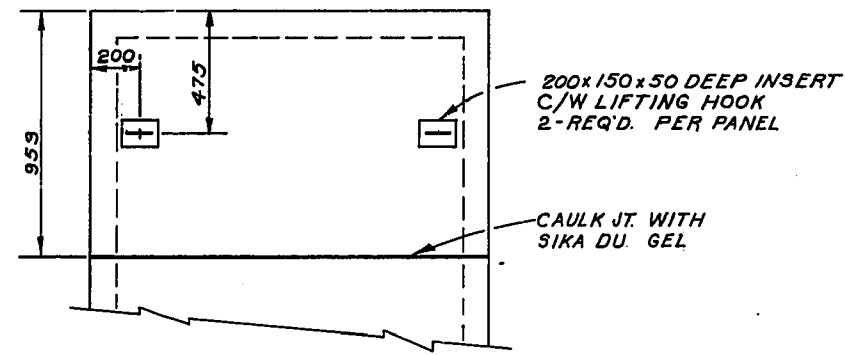
10 M.M.
19
18
17
16
15
14
13
12
11
10



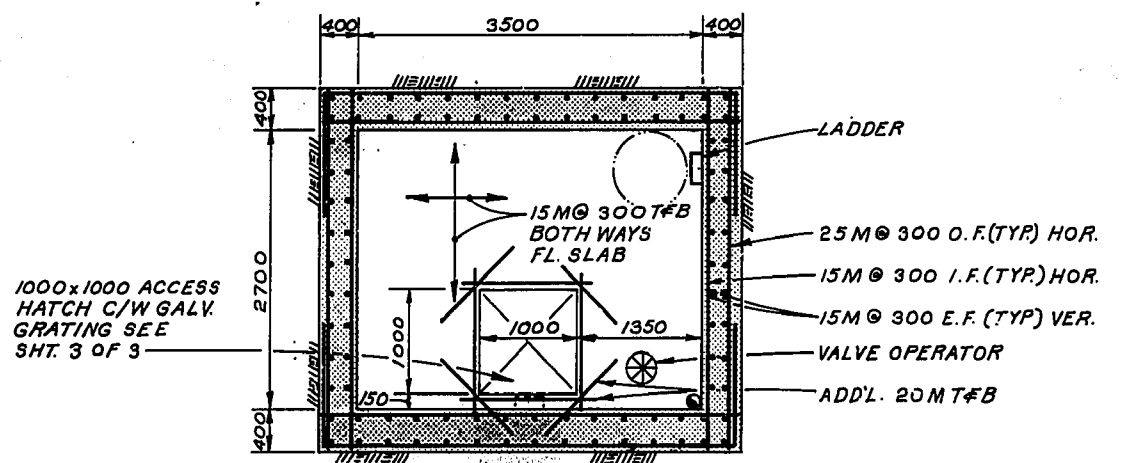
MAIN FLOOR PLAN



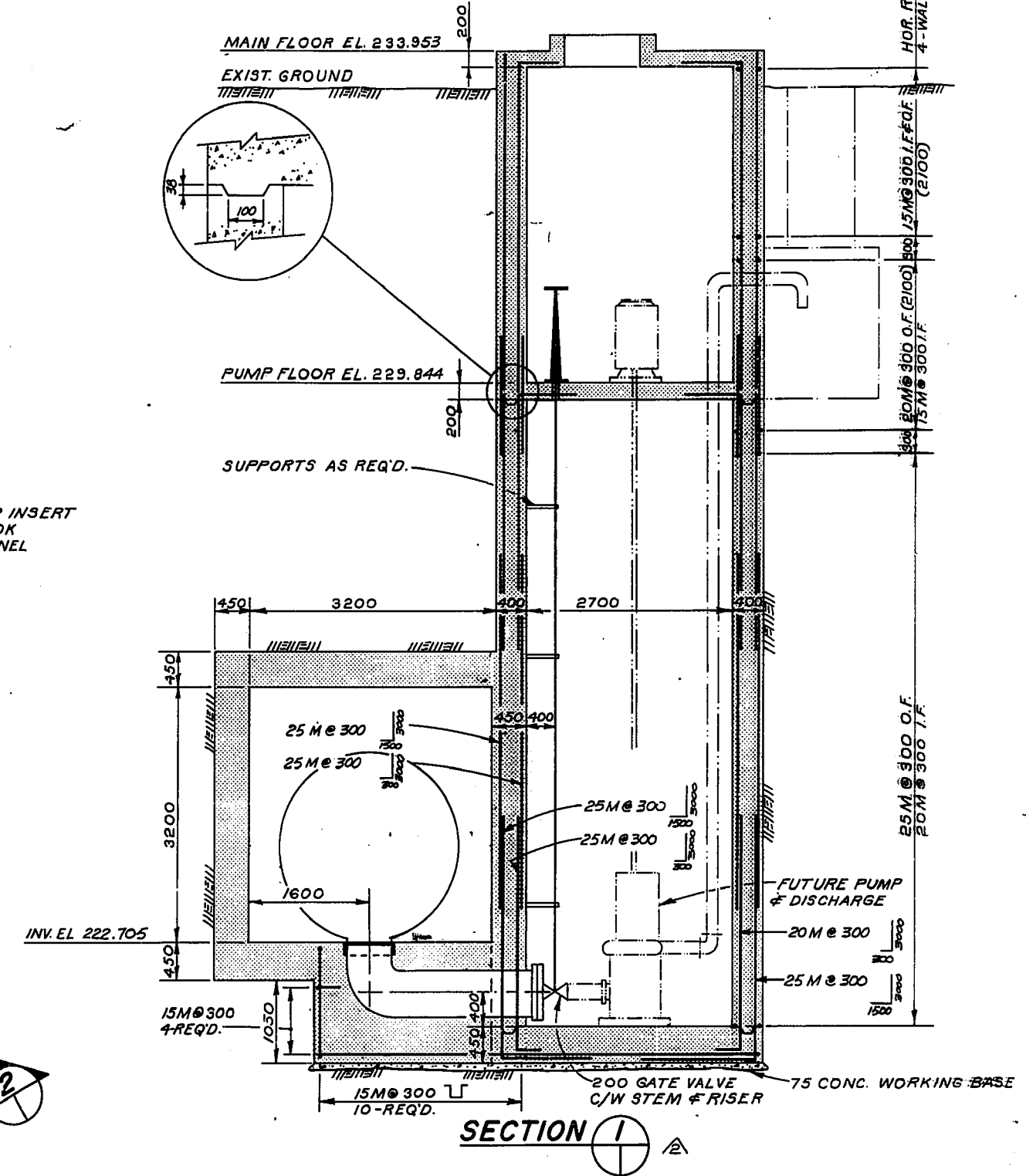
SECTION



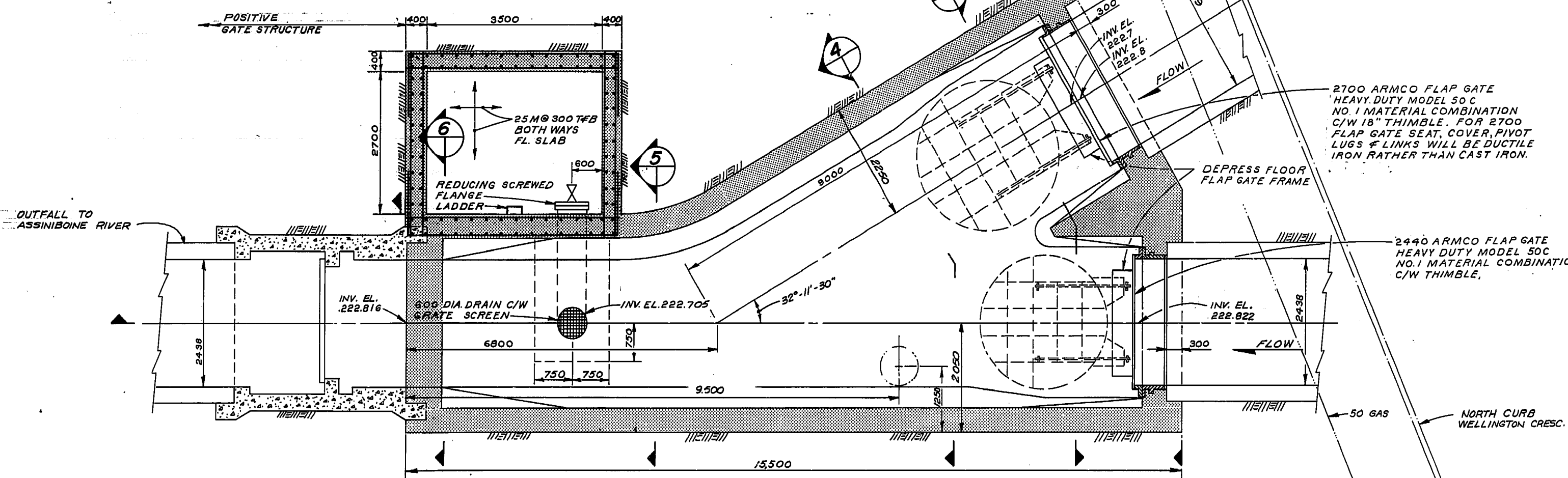
DETAIL "A"
SCALE: 1:20
2-PANELS REQ'D.



PUMP FLOOR PLAN



SECTION 1



SECTION @ EL. 224.500

NOTE
AS BUILT APPROVAL
APPLIES ONLY TO THE
RELIEF SEWER AND
RELATED CONNECTIONS.

AS BUILT
APPROVED BY: *[Signature]*
19/10/23

LEGEND

---	WINNIPEG HYDRO STREET LIGHTING (S.L.)	----	CULVERT
---	MANITOBA HYDRO	○	HYDRANT
---	MANITOBA TELEPHONE SYSTEM (M.T.S.)	○	WATER VALVE (W.V.)
---	TRAFFIC SIGNALS (T.S.)	○	GAS VALVE (G.V.)
---	SEWER, STORM RELIEF SEWER (S., S.R.S.)	○	MANHOLE M.T.S. (M)
---	WATERMANS (W.M.)	○	HYDRO (H), SEWER (S)
---	GAS	○	CURB INLET
		○	CATCH BASIN
		○	SURVEY RAB
		○	BRASS PLUG & SURVEY CONTROL (M)
		○	TREE
		○	GUY WIRE
		○	POLE

WARNING
IF POWER EQUIPMENT OR EXPLOSIVES ARE TO BE USED FOR EXCAVATION ON THIS PROJECT THE CONTRACTOR MUST:
1. NOTIFY THE GAS COMPANY OF THE PROPOSED LOCATION OF EXCAVATION.
2. TAKE PRECAUTION TO AVOID DAMAGE TO GAS COMPANY INSTALLATIONS.
SEE PROVINCIAL REGULATION 210/72 FOR DETAILS.

UNDERGROUND STRUCTURES
LOCATIONS OF UNDERGROUND STRUCTURES AS SHOWN ARE BASED ON THE BEST INFORMATION AVAILABLE, BUT NO GUARANTEE IS GIVEN THAT ALL EXISTING UTILITIES ARE EXACT CONFIRMATION OF EXISTENCE AND EXACT LOCATION OF ALL SERVICES MUST BE OBTAINED FROM THE INDIVIDUAL UTILITIES BEFORE PROCEEDING WITH CONSTRUCTION

No	REVISIONS	DATE	APP.
2.	MANHOLE SIZE CHANGED	7/10/23	R.B.
1.	DETAILS ADD'D.	7/9-07-04	LDM

21/6/22

DILLON Consulting Engineers & Planners

DESIGNED BY: F.A.K. DRAWN BY: C.R.B.

CHECKED BY: DATE

APPROVED BY: *[Signature]* DATE: 21/6/22

THE CITY OF WINNIPEG

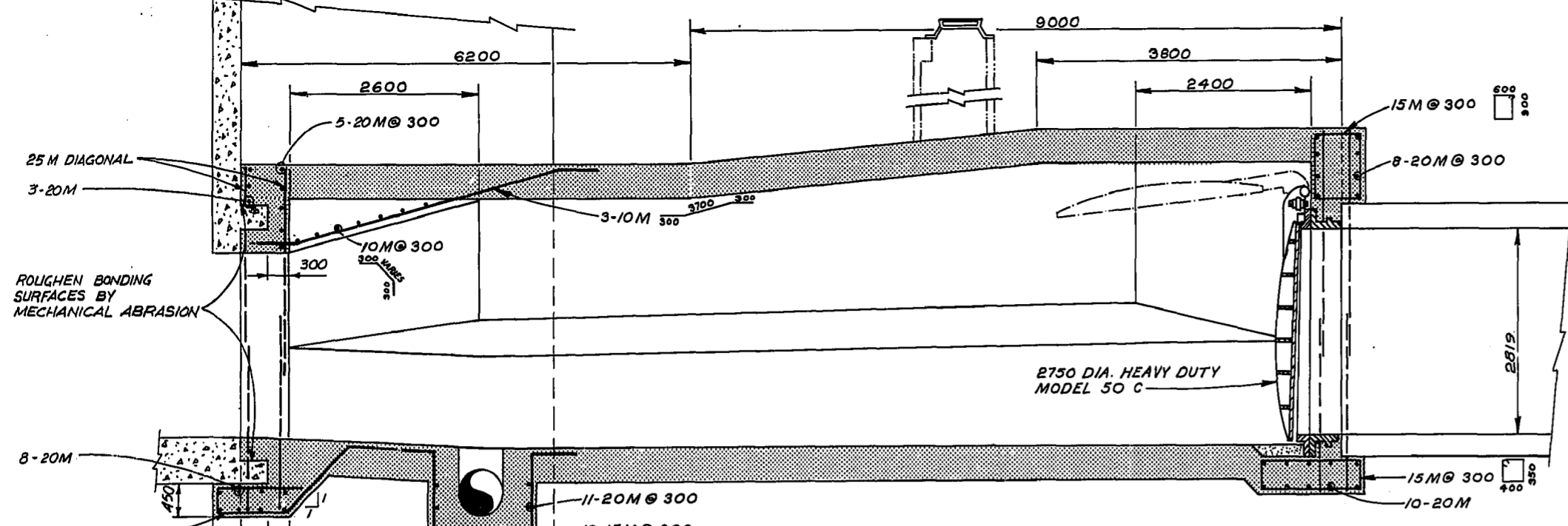
WORKS & OPERATIONS DEPARTMENT
WATERWORKS, WASTE & DISPOSAL DIVISION

ASH DISTRICT - SEWER RELIEF
CONTRACT II
MANHOLE TYPE II
MIDLAND RAILWAY AT WELLINGTON CRES.

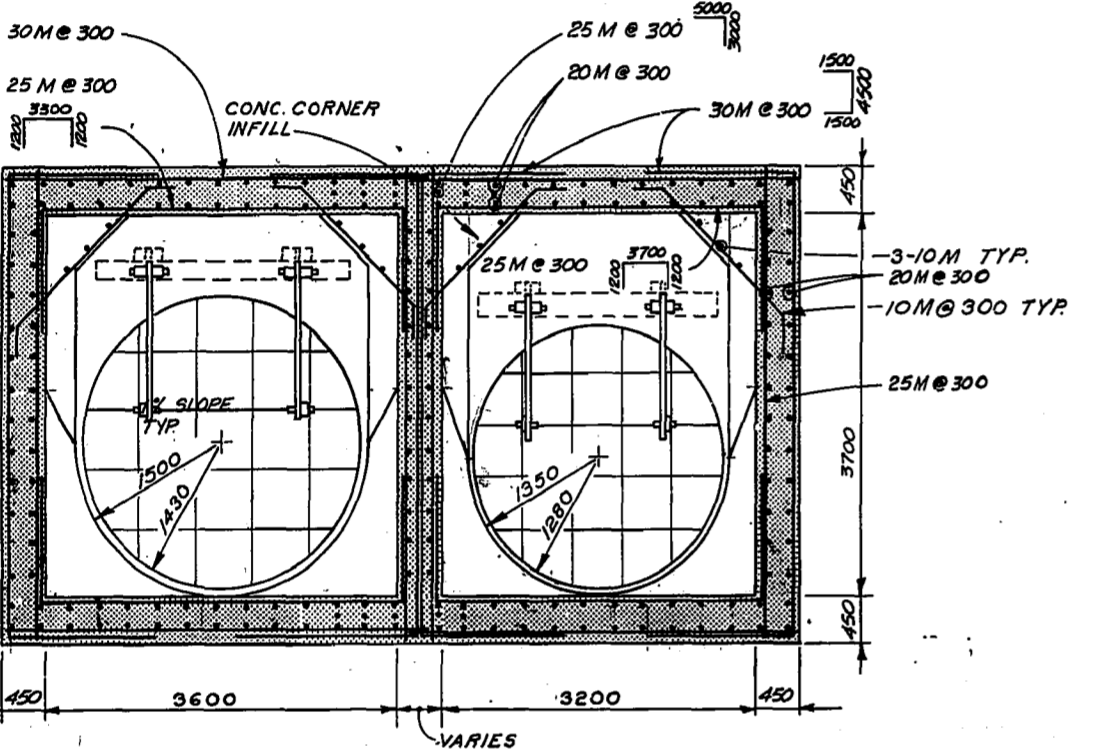
SHT. 1 OF 3

AUTHOR: *[Signature]* DATE: *[Signature]*

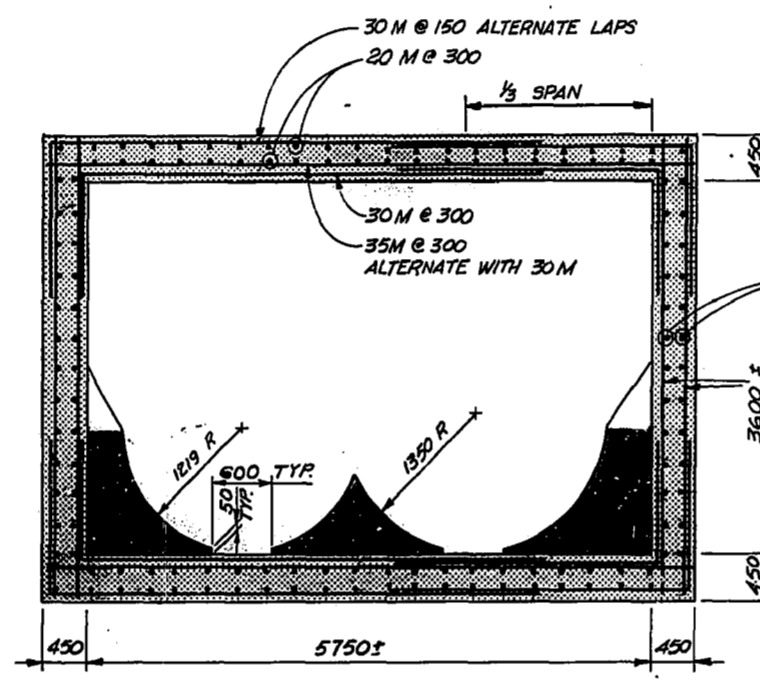
SCALE: 1:50 DRAWING NO: LD-2541A



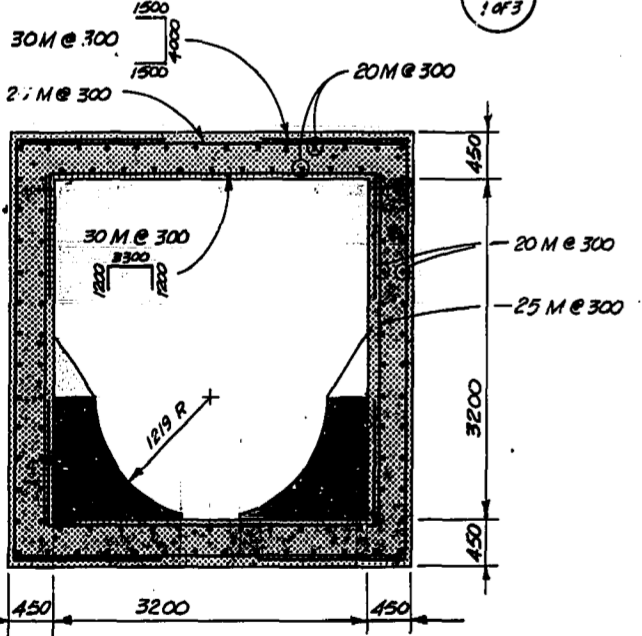
SECTION 2
1 OF 3



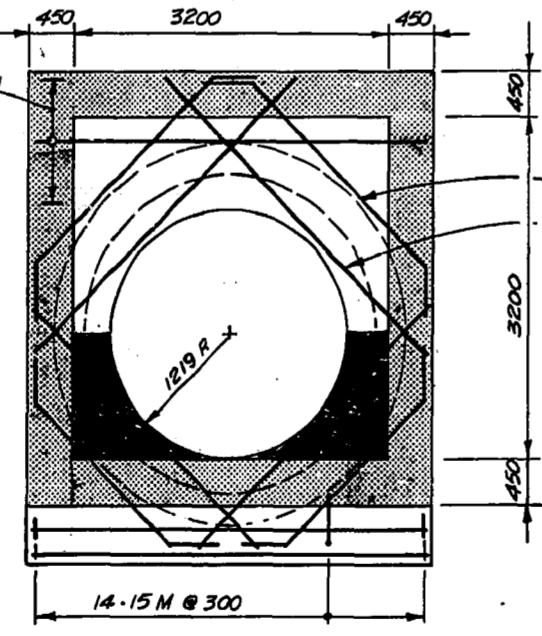
SECTION 3
1 OF 3



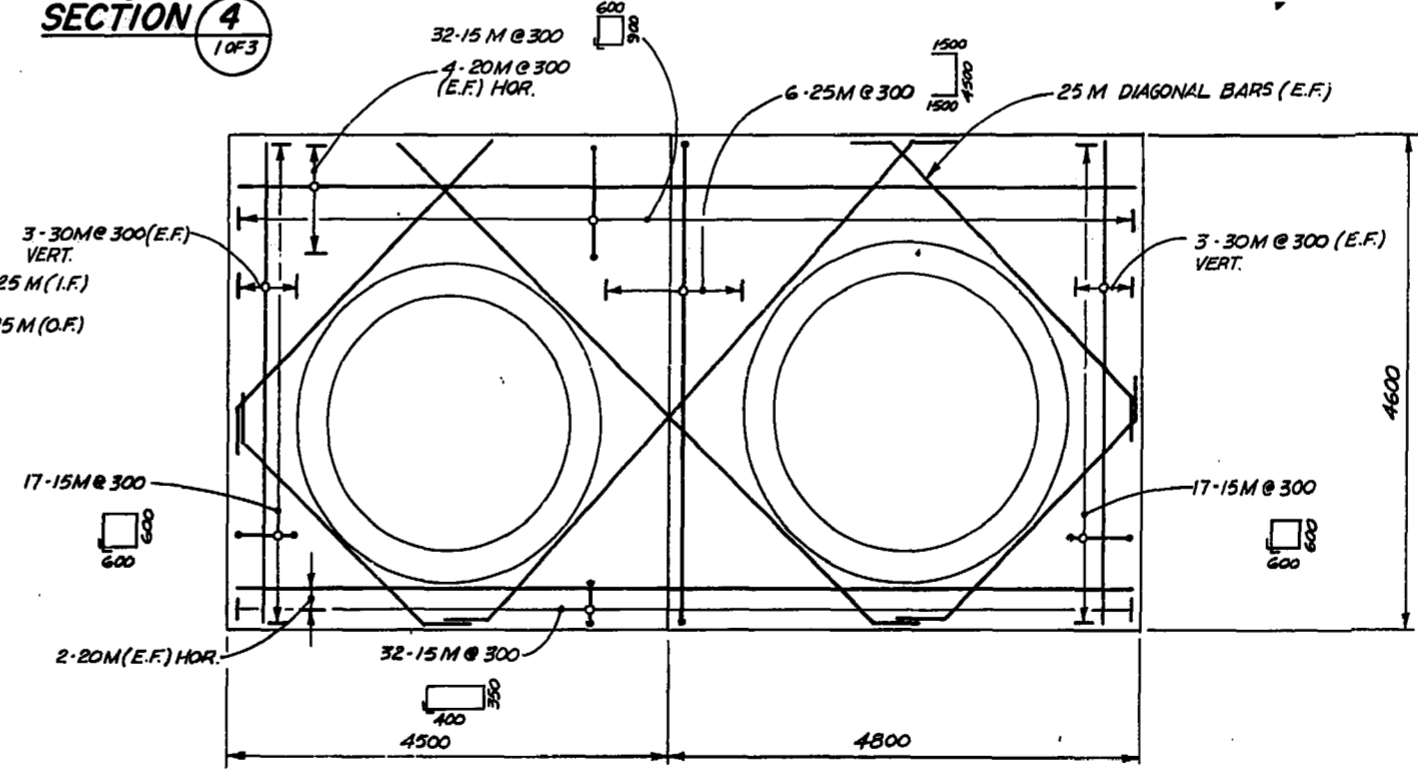
SECTION 4
1 OF 3



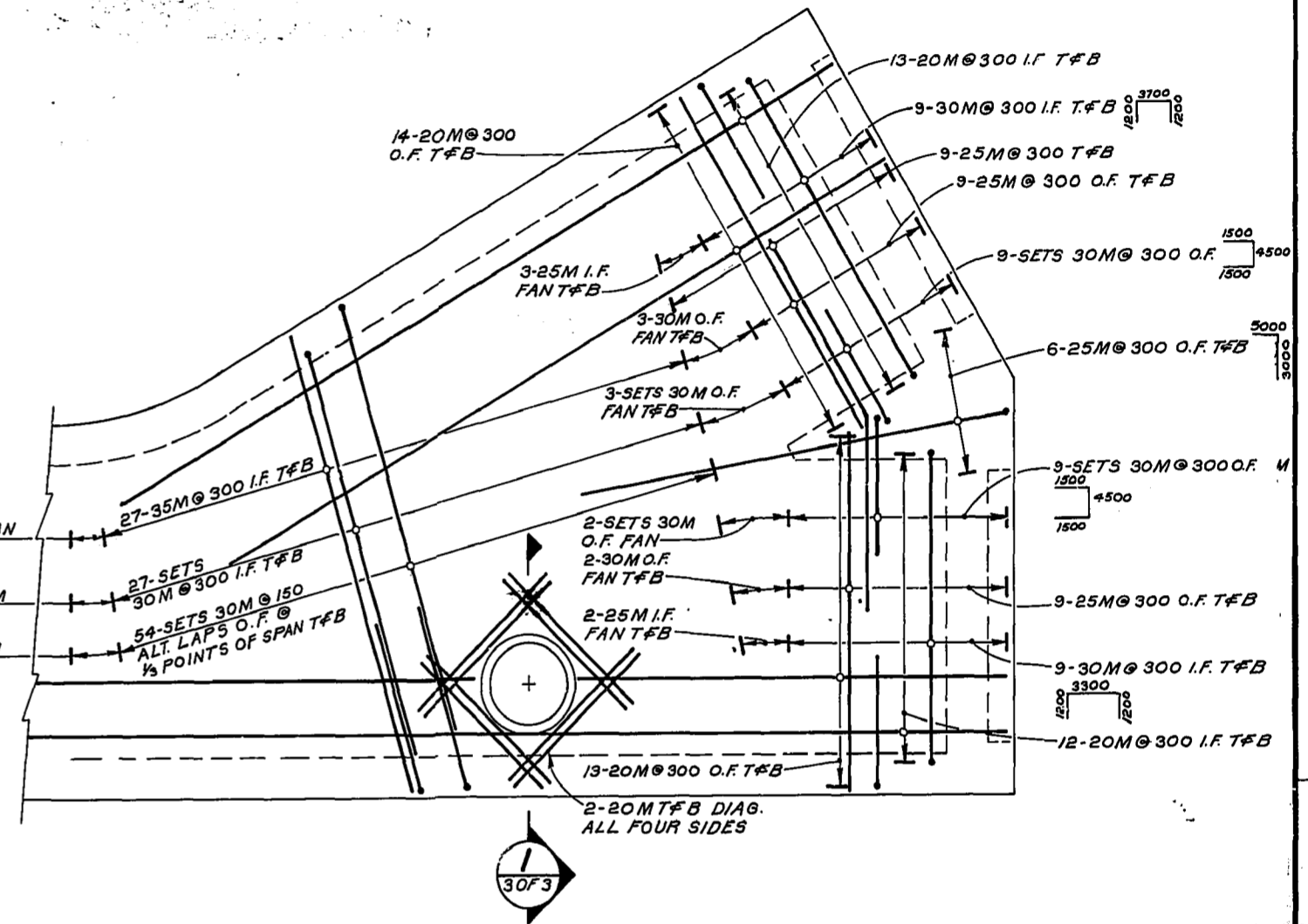
SECTION 5
1 OF 3



SECTION 6
1 OF 3



SECTION 7
1 OF 3



DETAIL A
SHOWING ROOF FLOOR SLAB REINFORCING

NOTE
AS BUILT APPROVAL
APPLIES ONLY TO THE
RELIEF SEWER AND
RELATED CONNECTIONS.

AS BUILT
APPROVED BY: *Ray [Signature]*
1/14/81

LEGEND

---	WINNIPEG HYDRO STREET LIGHTING (S.L.)
---	MANITOBA HYDRO
---	MANITOBA TELEPHONE SYSTEM (M.T.S.)
---	TRAFFIC SIGNALS (T.S.)
---	SEWER, STORM RELIEF SEWER (S., S.R.S.)
---	WATERMANS (W.M.)
---	GAS
---	CULVERT
---	HYDRANT
---	WATER VALVE (W.V.)
---	GAS VALVE (G.V.)
---	MANHOLE M.T.S. (M)
---	HYDRO (H), SEWER (S)
---	CURB INLET
---	CATCH BASIN
---	SURVEY BAR
---	BRASS PLUG & SURVEY CONTROL (M)
---	TREE
---	BUY WIRE
---	POLE

WARNING
IF POWER EQUIPMENT OR EXPLOSIVES ARE TO BE USED FOR EXCAVATION ON THIS PROJECT THE CONTRACTOR MUST:
1. NOTIFY THE GAS COMPANY OF THE PROPOSED LOCATION OF EXCAVATION.
2. TAKE PRECAUTION TO AVOID DAMAGE TO GAS COMPANY INSTALLATIONS.
SEE PROVINCIAL REGULATION 210/72 FOR DETAILS.

UNDERGROUND STRUCTURES
LOCATIONS OF UNDERGROUND STRUCTURES AS SHOWN ARE BASED ON THE BEST INFORMATION AVAILABLE, BUT NO GUARANTEE IS GIVEN THAT ALL EXISTING UTILITIES ARE EXACT CONFIRMATION OF EXISTENCE AND EXACT LOCATION OF ALL SERVICES MUST BE OBTAINED FROM THE INDIVIDUAL UTILITIES BEFORE PROCEEDING WITH CONSTRUCTION

No	REVISIONS	DATE	APP.
1	MANHOLE SIZE CHANGED	7/9/03	R.B.
2	DETAILS ADDED	26 JUN 79	D.M.M.

2/6/79

2/6/79

2/6/79

Consulting Engineers & Planners

DESIGNED BY	DRAWN BY
CHECKED BY	DATE
APPROVED BY	DATE

THE CITY OF WINNIPEG

WORKS & OPERATIONS DEPARTMENT

WATERWORKS, WASTE & DISPOSAL DIVISION

ASH DISTRICT - SEWER RELIEF CONTRACT II

MANHOLE TYPE II

MIDLAND RAILWAY AT WELLINGTON CRES.

SHT. 2 OF 3

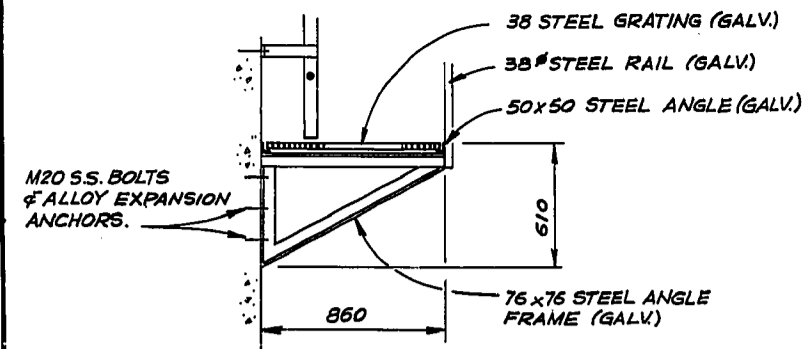
AUTHORIZED BY: *[Signature]*

DATE: _____

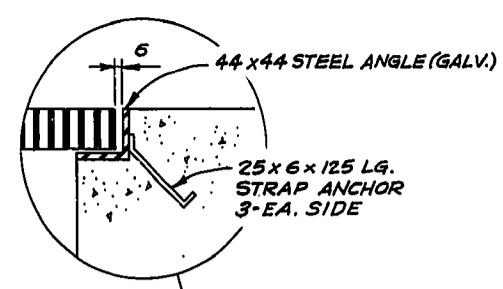
SCALE 1:50

DRAWING NO. **LD-254 B**

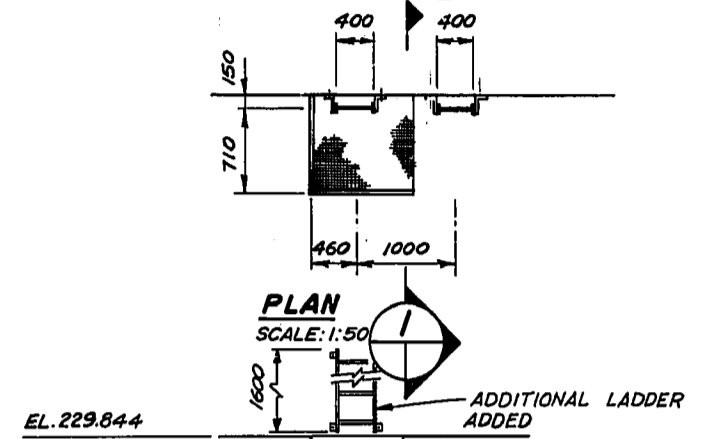
10 M.M.
9
8
7
6
5
4
3
2
1
0



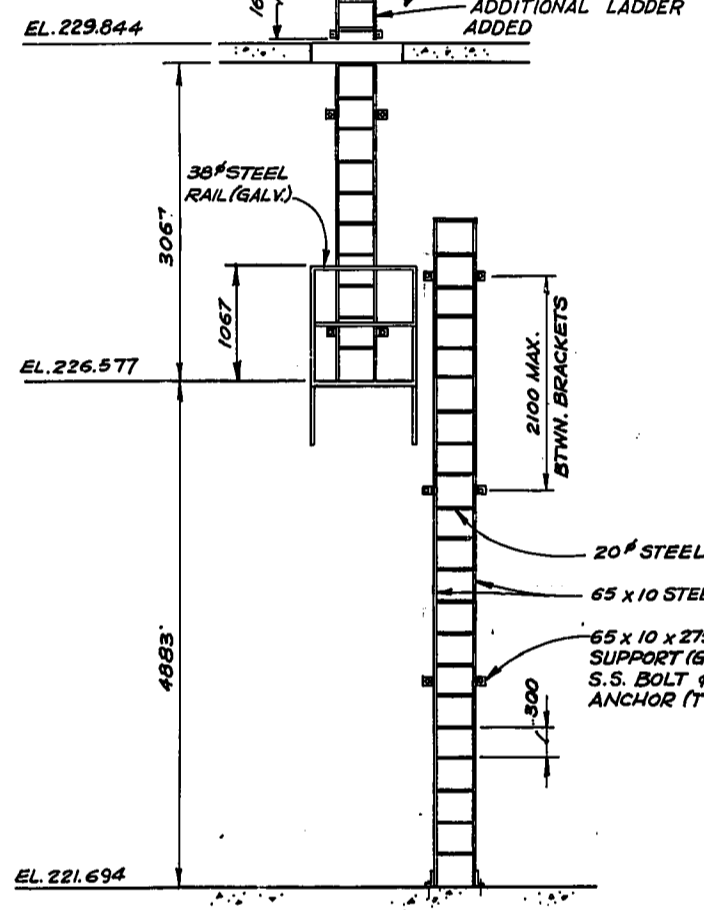
SECTION 1
SCALE: 1:250



ACCESS HATCH DETAIL
SCALE: 1:250

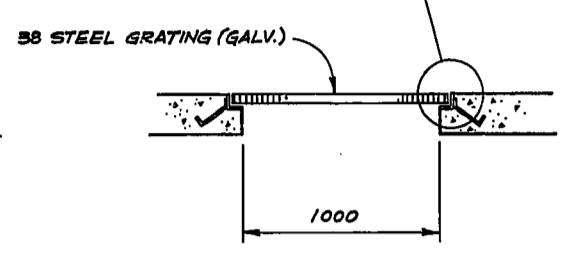


PLAN
SCALE: 1:50

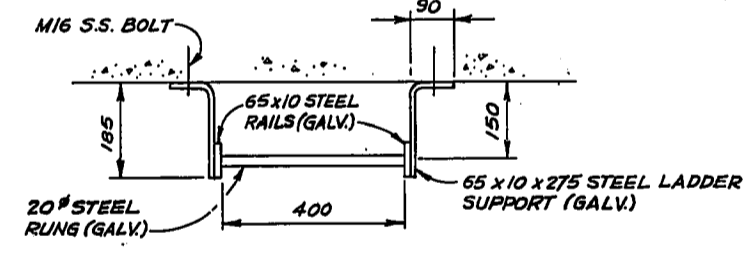


ELEVATION
SCALE: 1:50

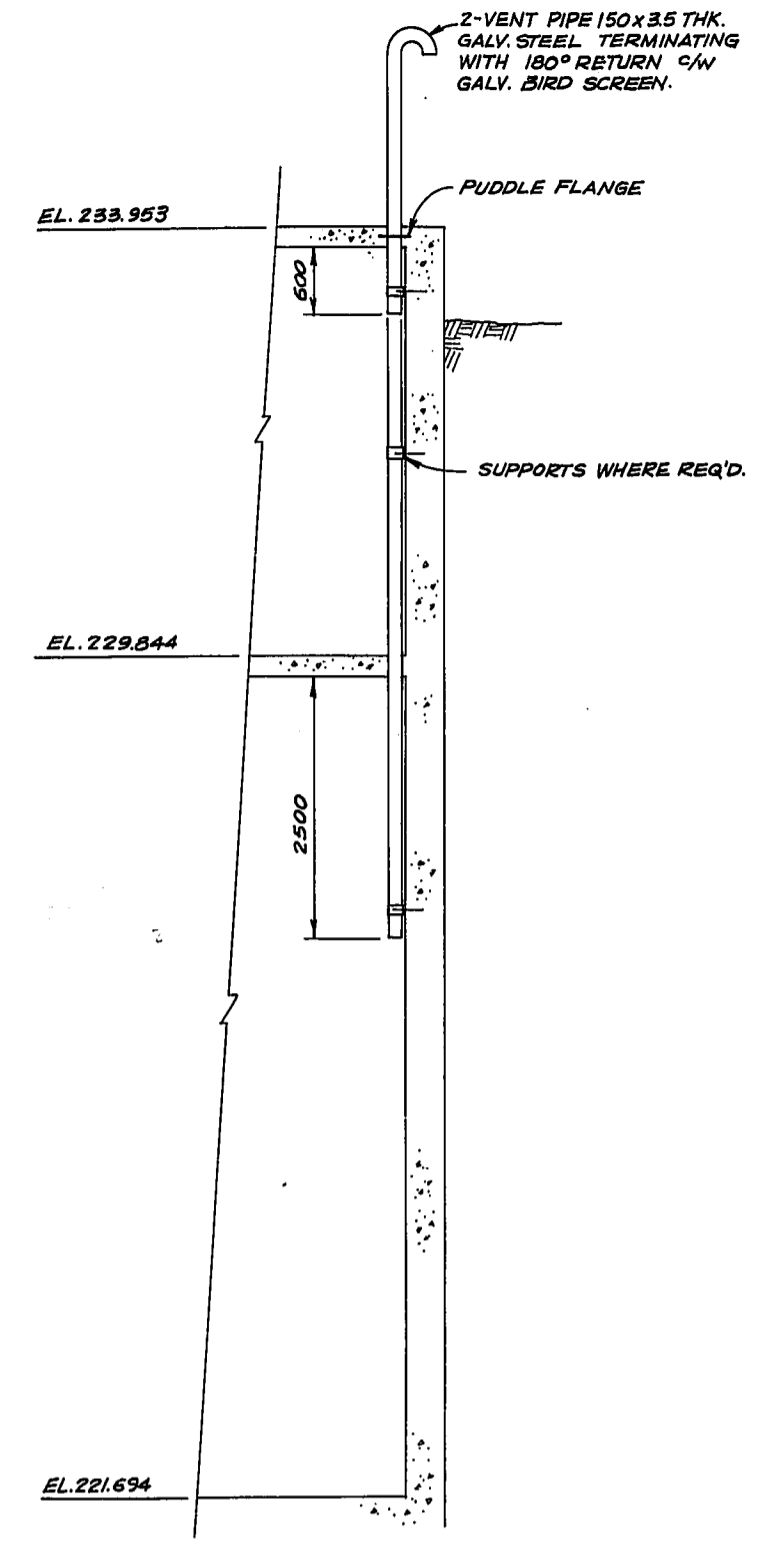
LADDER NO. 2 & 3



LADDER NO. 1
SCALE: 1:50

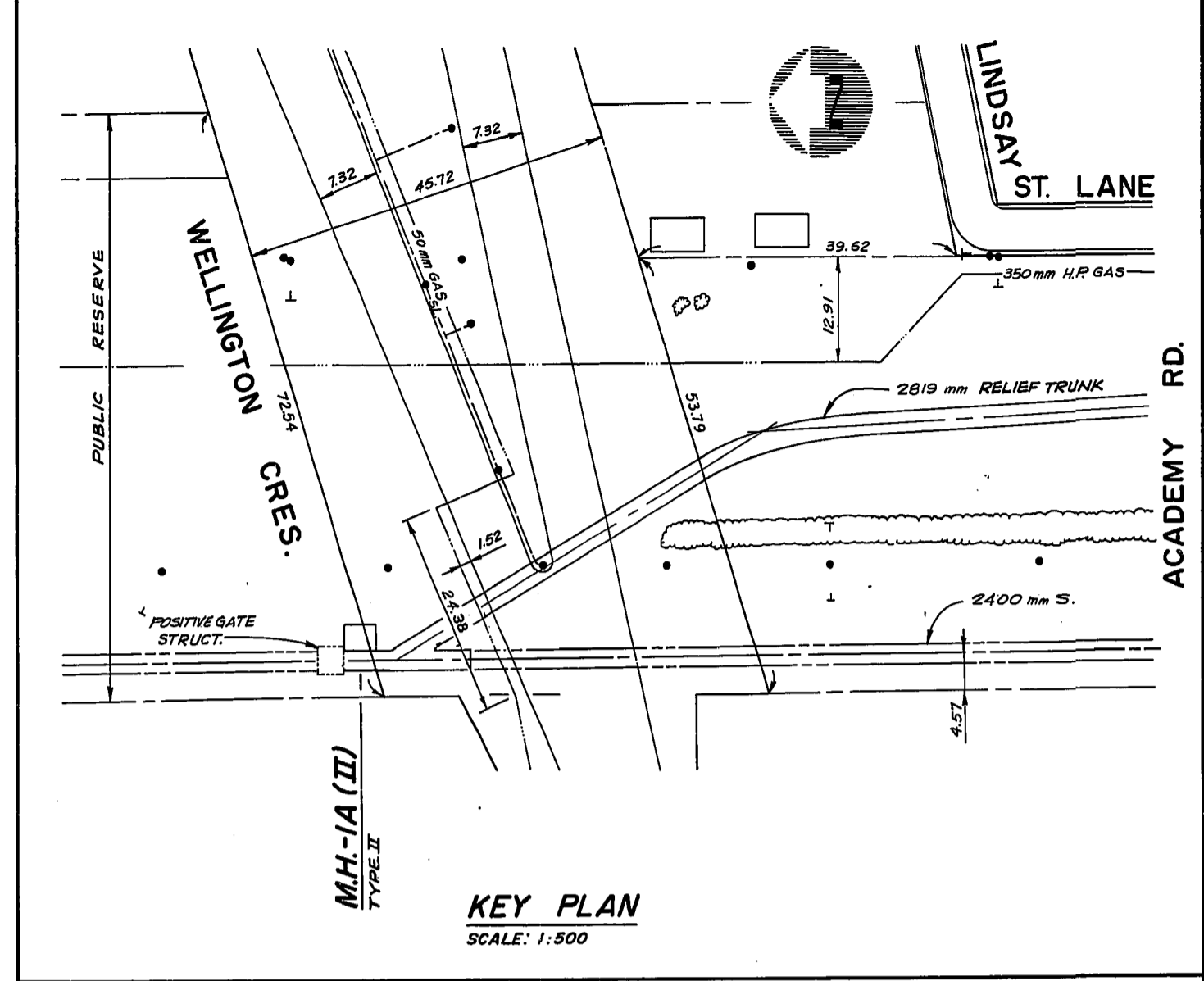
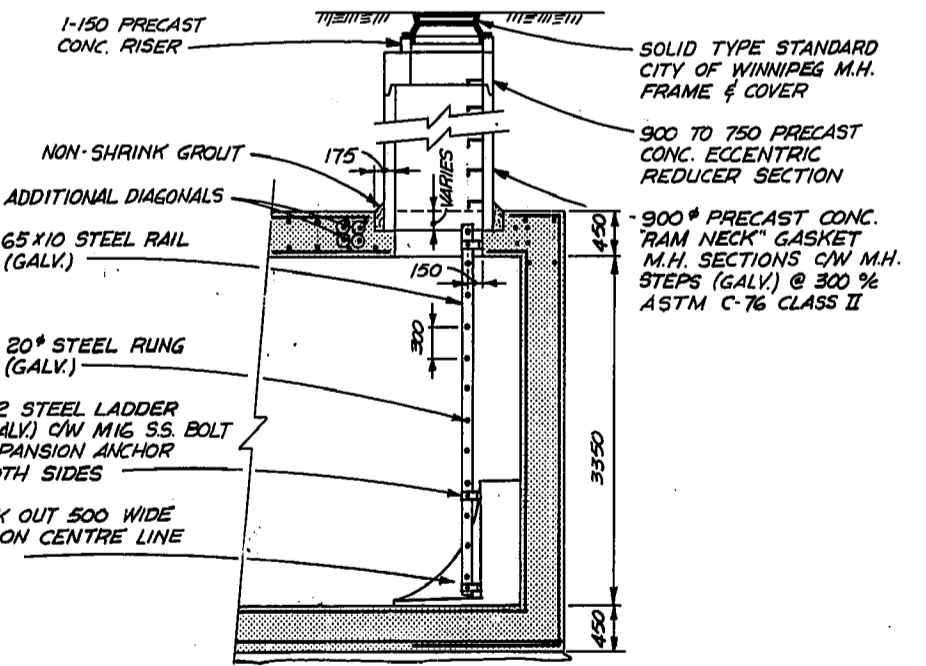


LADDER DETAILS
SCALE: 1:10



SECTION 2
SCALE: 1:50

AIR RELIEF VENTS
SCALE: 1:50



KEY PLAN
SCALE: 1:500

NOTE
AS BUILT APPROVAL
APPLIES ONLY TO THE
RELIEF SEWER AND
RELATED CONNECTIONS.

AS BUILT
APPROVED BY: *[Signature]*
15/01/81

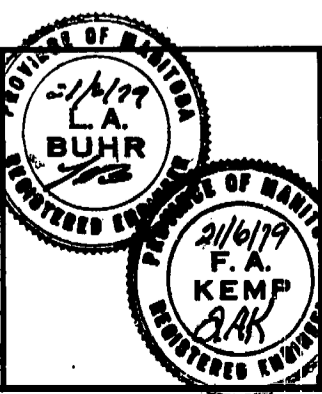
LEGEND

---	WINNIPEG HYDRO STREET LIGHTING (S.L.)	====	CULVERT
---	MANITOBA HYDRO	⊕	HYDRANT
---	MANITOBA TELEPHONE SYSTEM (M.T.S.)	⊕	WATER VALVE (W.V.)
---	TRAFFIC SIGNALS (T.S.)	⊕	GAS VALVE (G.V.)
---	SEWER, STORM RELIEF SEWER (S., S.R.S.)	⊕	MANHOLE M.T.S. (M)
---	WATERMANS (W.M.)	⊕	HYDRO (H), SEWER (S)
---	GAS	⊕	CURB INLET
		⊕	CATCH BASIN
		⊕	SURVEY BAR
		⊕	BRASS PLUG & SURVEY CONTROL (M)
		⊕	TREE
		⊕	GUY WIRE
		⊕	POLE

WARNING
IF POWER EQUIPMENT OR EXPLOSIVES ARE TO BE USED FOR EXCAVATION ON THIS PROJECT THE CONTRACTOR MUST:
1. NOTIFY THE GAS COMPANY OF THE PROPOSED LOCATION OF EXCAVATION.
2. TAKE PRECAUTION TO AVOID DAMAGE TO GAS COMPANY INSTALLATIONS.
SEE PROVINCIAL REGULATION 210/72 FOR DETAILS.

UNDERGROUND STRUCTURES
LOCATIONS OF UNDERGROUND STRUCTURES AS SHOWN ARE BASED ON THE BEST INFORMATION AVAILABLE, BUT NO GUARANTEE IS GIVEN THAT ALL EXISTING UTILITIES ARE SHOWN OR THAT THE GIVEN LOCATIONS ARE EXACT. CONFIRMATION OF EXISTENCE AND EXACT LOCATION OF ALL SERVICES MUST BE OBTAINED FROM THE INDIVIDUAL UTILITIES BEFORE PROCEEDING WITH CONSTRUCTION

No	REVISIONS	DATE	APP.
2	MANHOLE SIZE CHANGED	79/10/23	R.B.
1	DETAILS ADDED	79-06-27	LDM



Consulting Engineers & Planners
DILLON
DESIGNED BY: F.A.K.
DRAWN BY: D.C.G.
CHECKED BY: DATE
APPROVED BY: *[Signature]* DATE: 21/4/81

THE CITY OF WINNIPEG
WORKS & OPERATIONS DEPARTMENT
WATERWORKS, WASTE & DISPOSAL DIVISION

ASH DISTRICT - SEWER RELIEF CONTRACT II
MANHOLE TYPE II
MIDLAND RAILWAY AT WELLINGTON CRES.
SHT. 3 OF 3
AUTHORISED BY: *[Signature]* DATE
SCALE: AS NOTED
DRAWING NO: LD-254 CA



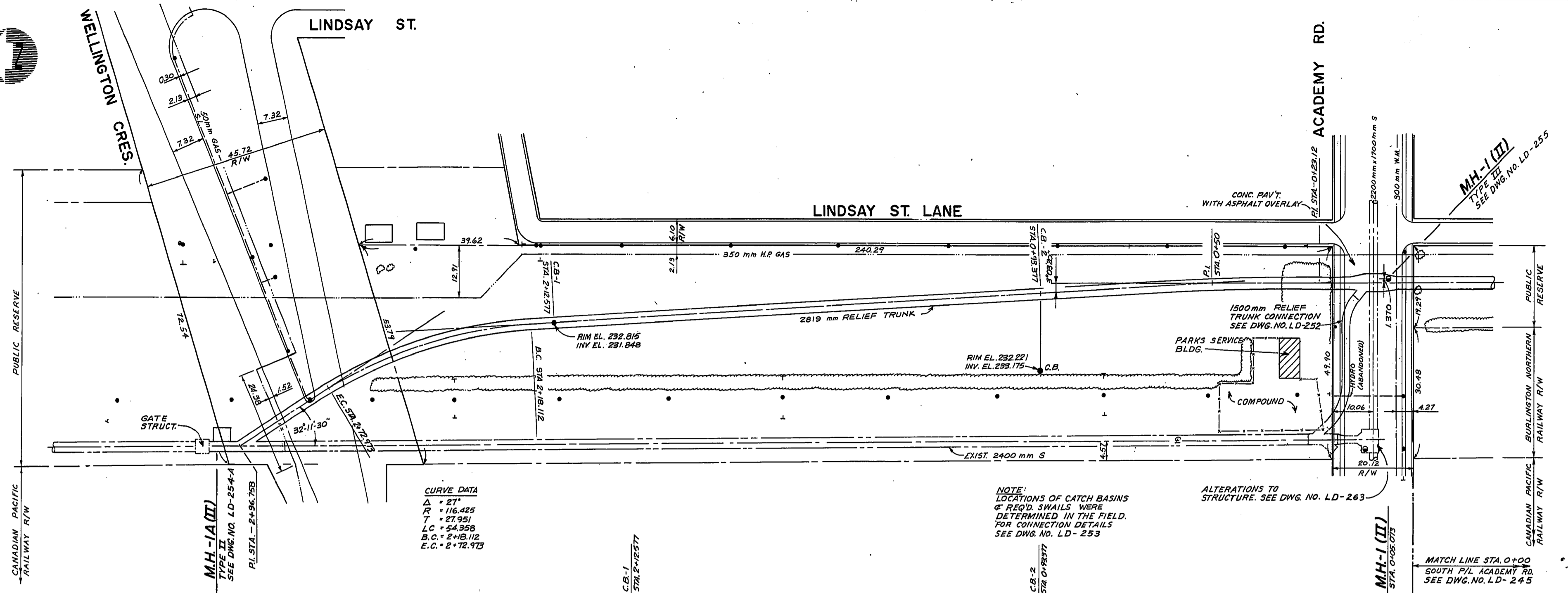
WELLINGTON CRESC.

LINDSAY ST.

LINDSAY ST. LANE

ACADEMY RD.

M.H.-1 (II)
TYPE III
SEE DWG. NO. LD-255

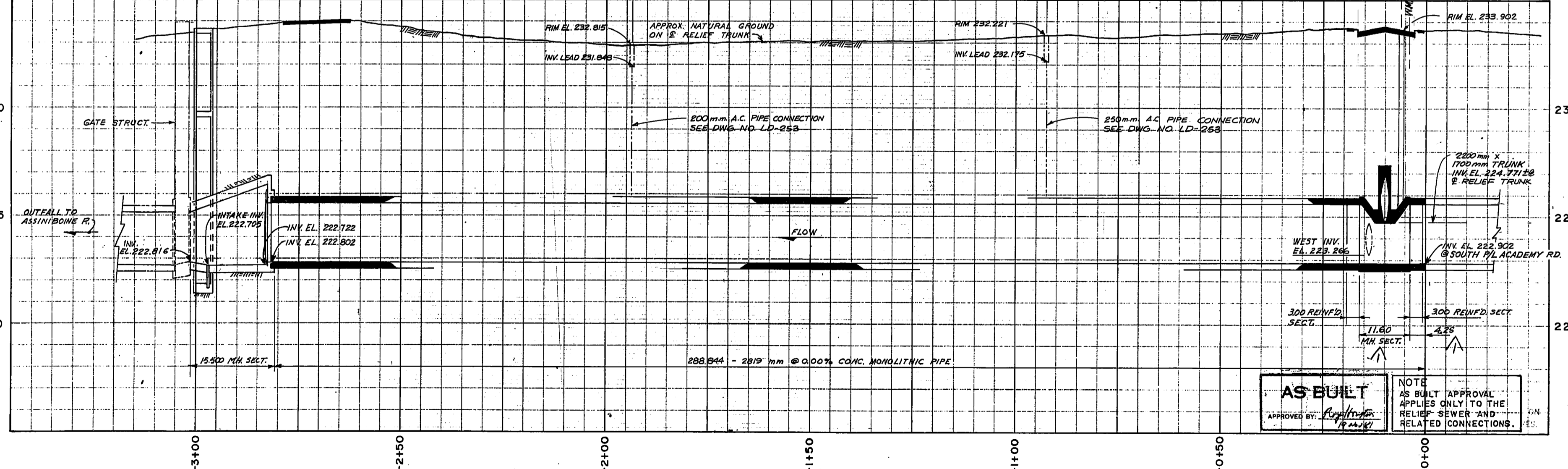


CURVE DATA
 $\Delta = 27^\circ$
 $R = 116.425$
 $T = 27.951$
 $LC = 54.358$
 $B.C. = 2+18.112$
 $E.C. = 2+72.973$

NOTE:
 LOCATIONS OF CATCH BASINS
 & REQ'D SWAILS WERE
 DETERMINED IN THE FIELD.
 FOR CONNECTION DETAILS
 SEE DWG. NO. LD-253

ALTERATIONS TO
 STRUCTURE. SEE DWG. NO. LD-263

MATCH LINE STA. 0+00
 SOUTH P/L ACADEMY RD.
 SEE DWG. NO. LD-245



AS BUILT
 APPROVED BY: [Signature]
 DATE: 15/4/79

NOTE:
 AS BUILT APPROVAL
 APPLIES ONLY TO THE
 RELIEF SEWER AND
 RELATED CONNECTIONS.

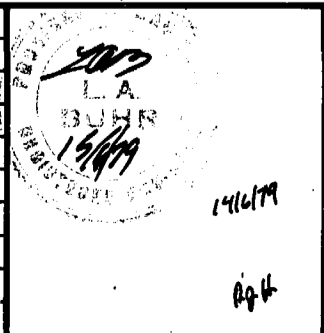
LEGEND

--- WINNIPEG HYDRO STREET LIGHTING (S.L.)	--- CULVERT
--- MANITOBA HYDRO	⊙ HYDRANT
--- MANITOBA TELEPHONE SYSTEM (M.T.S.)	⊙ WATER VALVE (W.V.)
--- TRAFFIC SIGNALS (T.S.)	⊙ GAS VALVE (G.V.)
--- SEWER, STORM RELIEF SEWER (S.,S.R.S.)	⊙ MANHOLE M.T.S. (M.)
--- WATERMANS (W.M.)	⊙ HYDRO (H), SEWER (S)
--- GAS	⊙ CURB INLET
	⊙ CATCH BASIN
	⊙ SURVEY BAR
	⊙ BRASS PLUG & SURVEY CONTROL (M)
	⊙ TREE
	⊙ GUY WIRE
	⊙ POLE

WARNING
 IF POWER EQUIPMENT OR EXPLOSIVES ARE TO BE USED FOR EXCAVATION ON THIS PROJECT THE CONTRACTOR MUST:
 1. NOTIFY THE GAS COMPANY OF THE PROPOSED LOCATION OF EXCAVATION.
 2. TAKE PRECAUTION TO AVOID DAMAGE TO GAS COMPANY INSTALLATIONS.
 SEE PROVINCIAL REGULATION 210/72 FOR DETAILS.

UNDERGROUND STRUCTURES
 LOCATIONS OF UNDERGROUND STRUCTURES AS SHOWN ARE BASED ON THE BEST INFORMATION AVAILABLE, BUT NO GUARANTEE IS GIVEN THAT ALL EXISTING UTILITIES ARE SHOWN OR THAT THE GIVEN LOCATIONS ARE EXACT. CONFIRMATION OF EXISTENCE AND EXACT LOCATION OF ALL SERVICES MUST BE OBTAINED FROM THE INDIVIDUAL UTILITIES BEFORE PROCEEDING WITH CONSTRUCTION.

No	REVISIONS	DATE	APP.
1	M.H. TYPE III LENGTH REV'D.	79-06-04	L.D.M.



Consulting Engineers & Planners

DESIGNED BY R. J. H.	DRAWN BY D. W. Z.
CHECKED BY L. D. M.	DATE 30/MAR/79
APPROVED BY [Signature]	DATE 15/4/79

THE CITY OF WINNIPEG

WORKS & OPERATIONS DEPARTMENT
 WATERWORKS, WASTE & DISPOSAL DIVISION

ASH DISTRICT - SEWER RELIEF CONTRACT II
 MIDLAND RAILWAY ACADEMY RD. TO WELLINGTON CRESCENT STA 0+00 TO STA. -3+01.60

AUTHORIZED BY: [Signature]
 DATE: []

SCALE: HOR. 1:500
 VER. 1:100

DRAWING NO. LD-244