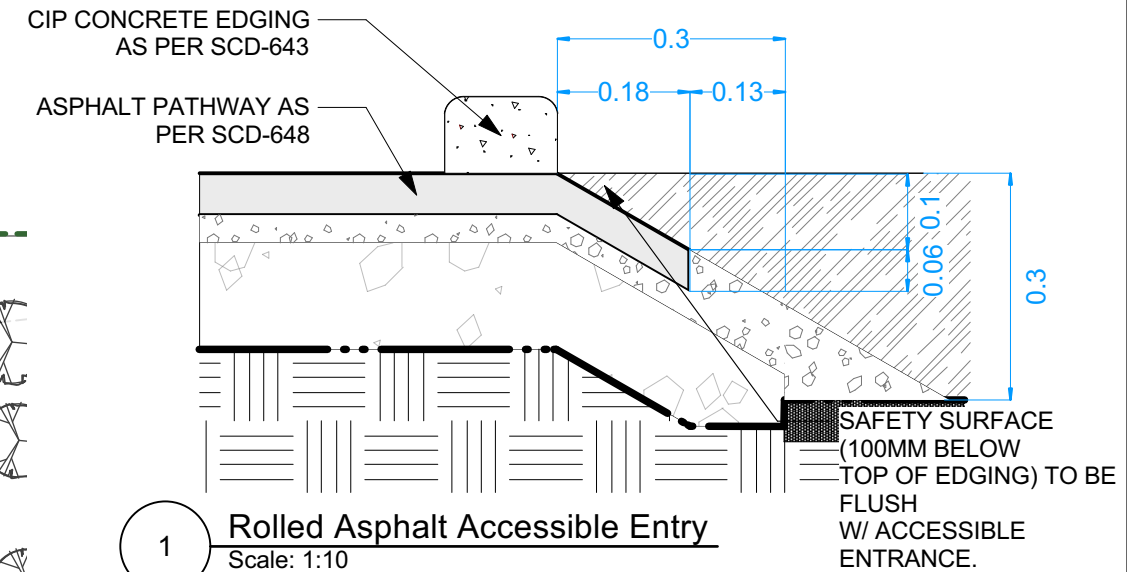
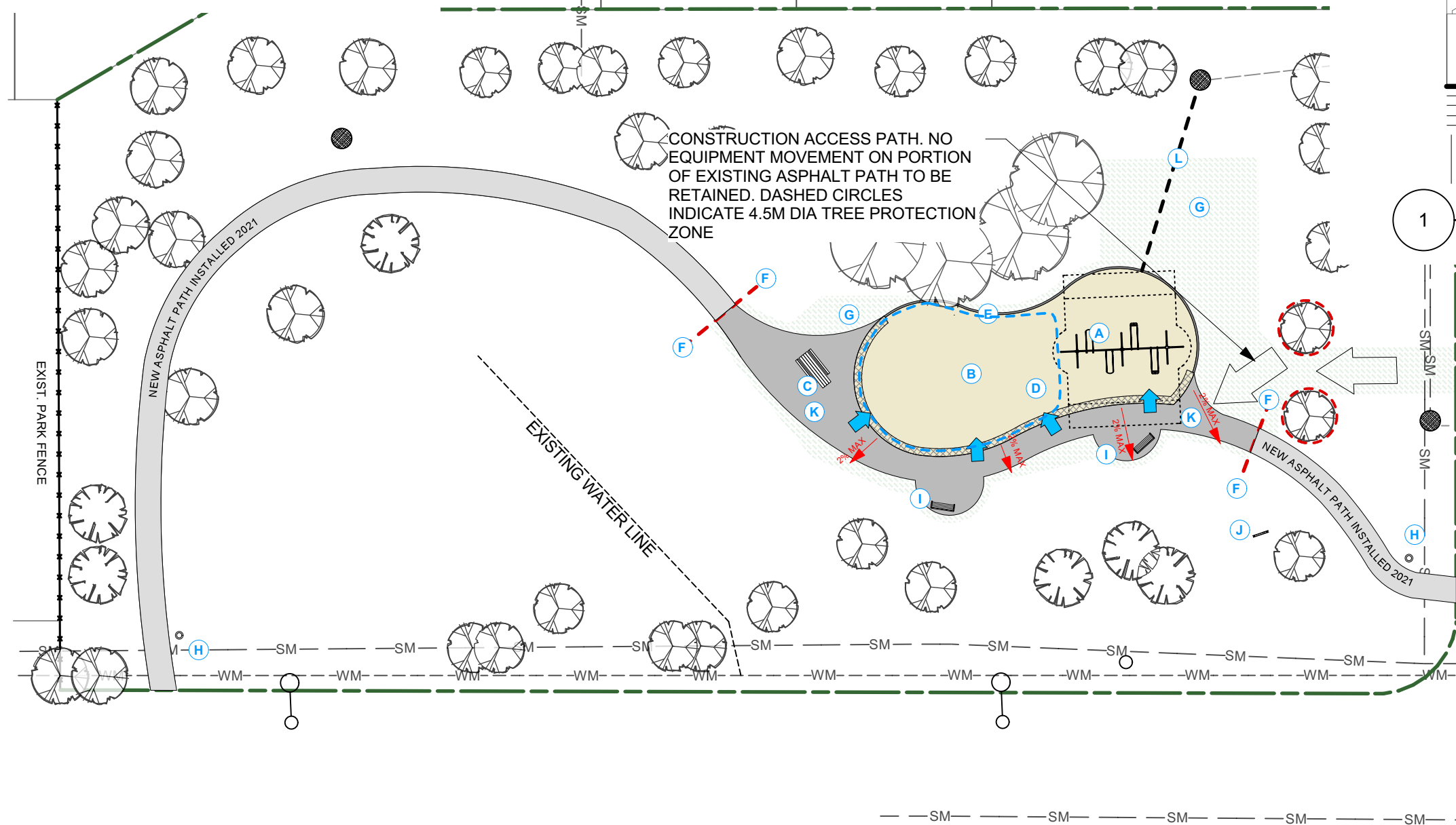


**MATERIALS NOTES**

1. ALL WORK TO CONFORM TO CURRENT CITY OF WINNIPEG STANDARD CONSTRUCTION SPECIFICATIONS AND DETAILS UNLESS OTHERWISE NOTED.
2. DIMENSIONS ARE IN METERS UNLESS OTHERWISE NOTED.
3. DO NOT SCALE DRAWING.
4. PROTECT EXISTING TREES TO REMAIN, TYP.
5. PAVEMENT SLOPE: DIRECTIONAL SLOPE 5% MAX., CROSS SLOPE 2% MAX., UNLESS OTHERWISE NOTED.

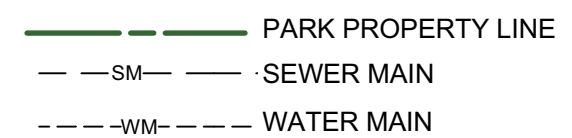
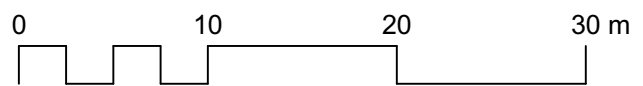


**1 Rolled Asphalt Accessible Entry**  
Scale: 1:10

**LEGEND**

- A** SALVAGE AND REINSTALL EXISTING 2-BAY 8' TALL SWING SET. TWO BUCKET AND TWO BELT SEATS
- B** SUPPLY AND INSTALL NEW 5-12 PLAY EQUIPMENT
- C** SUPPLY AND INSTALL NEW ACCESSIBLE PICNIC TABLE AS PER SCD-122A (1)
- D** SUPPLY AND INSTALL NEW ENGINEERED WOOD FIBRE SAFETY SURFACE (263 SM)
- E** SUPPLY AND INSTALL NEW CIP CONCRETE EDGING (32 LM) AS PER SCD-643
- F** EXTENTS OF REMOVAL OF EXISTING ASPHALT. MATCH GRADE
- G** SUPPLY AND INSTALL TOPSOIL AND SOD (307 SM)
- H** SUPPLY AND INSTALL NEW WASTE RECEPTACLE (SCD-119) (2)
- I** SUPPLY AND INSTALL BACKED BENCH (SCD-121) (2)
- J** SUPPLY AND INSTALL DOUBLE-SIDED PARK SIGN (SCD-153) (1)
- K** SUPPLY AND INSTALL NEW ASPHALT PAVING AS PER SCD-648 WITH ROLLED ACCESSIBLE EDGE INTO PLAY AREA (DETAIL 1) (180 SM)
- L** SUPPLY AND INSTALL SUBSURFACE DRAINAGE PIPE TO CATCH BASIN (SCD-665) (16 LM)

\* NOTE: blue arrows indicate accesible entry where asphalt is path is level with engineered wood fibre safety surface



CONTRACTOR TO CONFIRM ALL DIMENSIONS AND REPORT ANY DISCREPANCIES TO CONTRACT ADMINISTRATOR PRIOR TO CONSTRUCTION. LOCATION OF UNDERGROUND STRUCTURES AS SHOWN ARE BASED ON THE BEST INFORMATION AVAILABLE BUT NO GUARANTEE IS GIVEN THAT ALL EXISTING UTILITIES ARE SHOWN OR THAT THE GIVEN LOCATIONS ARE EXACT. CONFIRMATION OF EXISTENCE AND EXACT LOCATION OF ALL SERVICES MUST BE OBTAINED FROM THE INDIVIDUAL UTILITIES BEFORE PROCEEDING WITH CONSTRUCTION.

<p>THE CITY OF WINNIPEG Planning, Property and Development Department Planning and Land Use Division Unit 15 - 30 Fort Street, Winnipeg, MB, (R3C 4X5)</p>	DESIGNED BY	IM	CHECKED BY		DRAWING TITLE <b>Bernadine Crescent Park Playground Redevelopment Materials Plan</b>	DRAWING NO. <b>B.41-B3</b>
	DRAWN BY	IM	APPROVED BY			
	HORIZ. SCALE	1:400			MANAGER, PARK AND OPEN SPACES	DATE
	DATE	Feb 2023			MANAGER, PLANNING AND LAND USE DIVISION	DATE
					SITE ADDRESS 145 Bernadine Crescent	BID OPPORTUNITY NO. <b>246-2023</b>