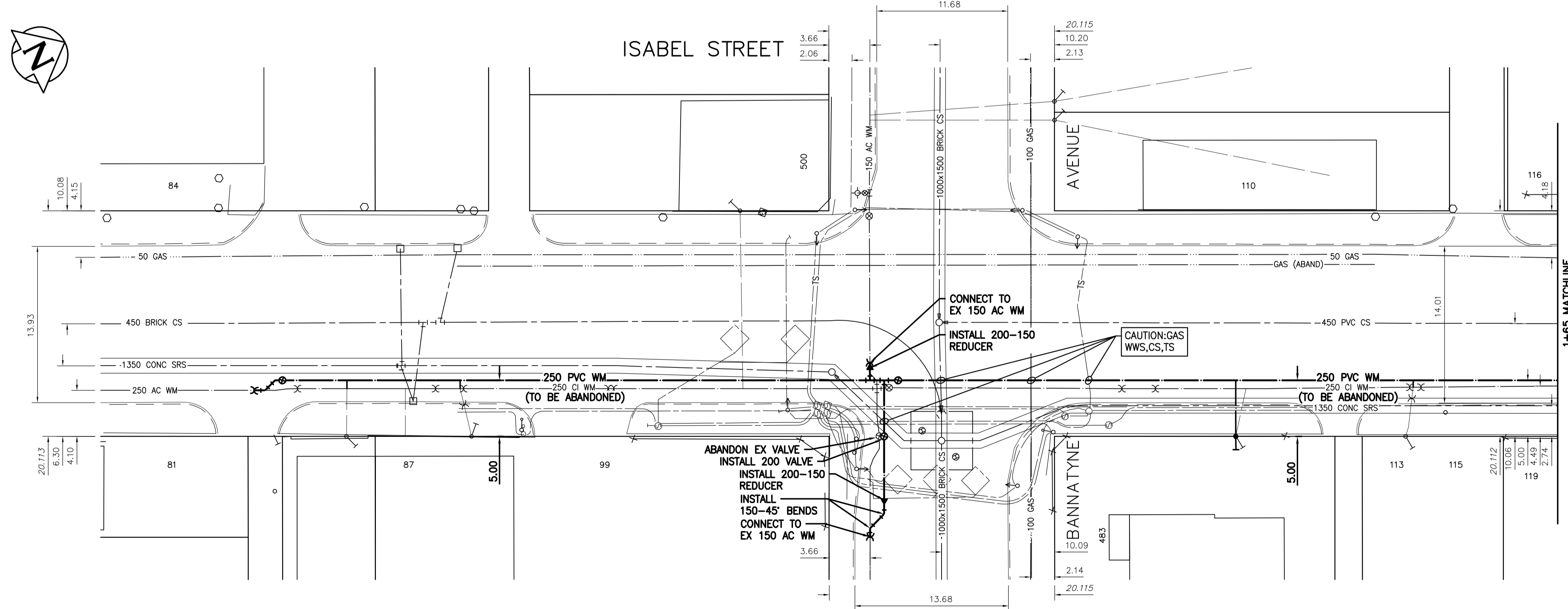


NOTE: CHAINAGES SHOWN ARE ALONG CENTRE LINE OF ROW



WATER SERVICE INFORMATION					
ADDRESS	PIPE SIZE & MATERIAL (STREET)	PIPE SIZE & MATERIAL (PROP.)	SHORT & LONG MEASUREMENT	CORP. LOCATION	REMARKS
81 ISABEL ST	CU	CU	7.52 NSL BUILDING	OPP S/C	OUTSIDE LIMIT OF WORK
COMMERCIAL	25	25	8.03>NNL MCDERMOT		
84 ISABEL ST	CU	CU	4.91 WEL BUILDING	1.5 W OF CS	OUTSIDE LIMIT OF WORK
COMMERCIAL	25	25	7.72 WML ISABEL		
87 ISABEL ST	CU	CU	2.6 SNL BLDG	OPP S/C	RECONNECT SERVICE
COMMERCIAL	38	38	5.7 NSBL OR LL		
99 ISABEL ST	CU	-	4.7 M SNBL #99 ISABEL	1 S OF S/C	RECONNECT SERVICE
COMMERCIAL	25	-	31.9 SNLL #99 ISABEL		
110 ISABEL ST	CU	CU	0.61 EWL BUILDING	OPP S/C	OUTSIDE LIMIT OF WORK
COMMERCIAL	25	25	6.76 WML ISABEL		
113 ISABEL ST	-	CU	2.9 NSBL #113	0.7 N CURB STOP #113	RECONNECT SERVICE
RESIDENTIAL	-	20	7.2 NSLL #113		
115 ISABEL ST	-	LEAD	0.3>NNL WINDOW 113	0.7 N CURB STOP #113	RECONNECT SERVICE
RESIDENTIAL	-	12	31.39>NNL BANNATYNE		
116 ISABEL ST	CU	LEAD	0.3 NSL BLDG	OPP S/C	RECONNECT SERVICE
COMMERCIAL	20	20	50.29 SSL WILLIAM		
119 ISABEL ST	LEAD	LEAD	3.66>NNL HOUSE 119	1.7>NNL #119	RENEW SERVICE
RESIDENTIAL	16	12	50.6>NNL BANNATYNE		
483 BANNATYNE AVE	LEAD	CU	OPP CNTR KITCHEN WINDOW	17.07>NNL BANNATYN	RENEW SERVICE
RESIDENTIAL	16	20	16.15>NNL BANNATYNE		
500 BANNATYNE AVE	LEAD	LEAD	-	7.68 SSL BANNAT	RECONNECT SERVICE
COMMERCIAL	12	12	-		

* SERVICES TO BE RENEWED TO R

NOTE: VALVES TO BE INSTALLED COUNTER-CLOCKWISE TO CLOSE

FOR INDEX SEE D-16599

METRIC
WHOLE NUMBERS INDICATE MILLIMETRES
DECIMALIZED NUMBERS INDICATE METRES

ENGINEERS GEOSCIENTISTS MANITOBA
Certificate of Authorization
Stantec Consulting Ltd.
No. 1301

LOCATION APPROVED UNDERGROUND STRUCTURES

B.M. 35-39 ELEV. 232.122m N.W. Cor. Notre Dame Ave. & Ellen St., Tblt. in S. Conc. foundation No. 395 Notre Dame Ave., 1m W. & 0.05m below Tyndall Stone of S.E. Cor. of Bldg.

SUPV. U/G STRUCTURES COMMITTEE DATE

NOTE: LOCATION OF UNDERGROUND STRUCTURES AS SHOWN ARE BASED ON THE BEST INFORMATION AVAILABLE BUT NO GUARANTEE IS GIVEN THAT ALL EXISTING UTILITIES ARE SHOWN OR THAT THE GIVEN LOCATIONS ARE EXACT. CONFIRMATION OF EXISTENCE AND EXACT LOCATION OF ALL SERVICES MUST BE OBTAINED FROM THE INDIVIDUAL UTILITIES BEFORE PROCEEDING WITH CONSTRUCTION.

00	ISSUED FOR TENDER	2023.04.05	RS
NO.	REVISIONS	DATE	BY

Stantec

DESIGNED BY: RS
CHECKED BY: RS
DRAWN BY: BP/OS
APPROVED BY: RS
SCALE: HORIZONTAL 1:250, VERTICAL 1:50
RELEASED FOR CONSTRUCTION: 2023.03.21
DATE: 2023.03.21

ENGINEER'S SEAL

CONSULTANT DRAWING NUMBER: C-206

THE CITY OF WINNIPEG
WATER AND WASTE DEPARTMENT
ENGINEERING DIVISION

2023 WATER MAIN RENEWALS
CONTRACT 8
ISABEL STREET
65.0 S OF BANNATYNE AVENUE TO
45.0 N OF BANNATYNE AVENUE

SHEET 8 OF 15
CITY DRAWING NUMBER: D-16605