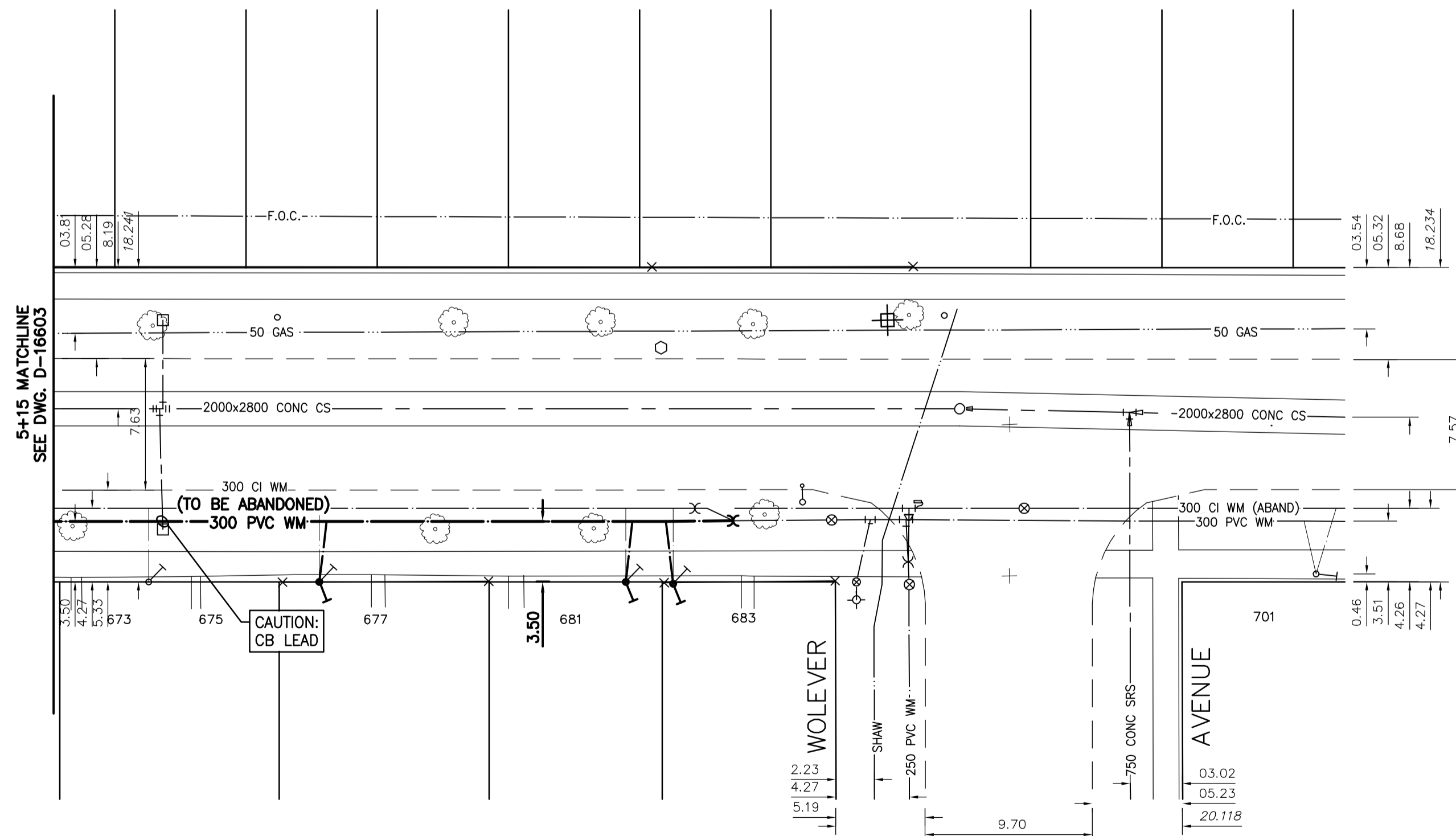


CLIFTON STREET



WATER SERVICE INFORMATION					
ADDRESS	PIPE SIZE & MATERIAL (STREET)	PIPE SIZE & MATERIAL (PROP.)	SHORT & LONG MEASUREMENT	CORP. LOCATION	REMARKS
673,675 CLIFTON ST RESIDENTIAL	CU 20	CU 20	6.71 SNHL	OPP SC	RECONNECT SERVICE
* 677 CLIFTON ST RESIDENTIAL	LEAD 20	LEAD 20	0.61 NSHL 31.7 SSL WOLEVER AV	OPP SC	RENEW SERVICE
* 681 CLIFTON ST RESIDENTIAL	LEAD 20	LEAD 20	1.22 SNHL 12.19 SSL WOLEVER AV	OPP SC	RENEW SERVICE
* 683 CLIFTON ST RESIDENTIAL	LEAD 20	LEAD 20	1.37 SSHL 9.45 SSL WOLEVER AV	OPP SC	RENEW SERVICE
701 CLIFTON ST RESIDENTIAL	CU 20	CU 20	1.7 SNBL 7.8 NNL WOLEVER AVE	0.7 S OF SC	OUTSIDE LIMIT OF WORK

\* SERVICES TO BE RENEWED TO R

NOTE: CHAINAGES SHOWN ARE ALONG CENTRE LINE OF ROW

NOTE: VALVES TO BE INSTALLED COUNTER-CLOCKWISE TO CLOSE

FOR INDEX SEE D-16599



METRIC  
WHOLE NUMBERS INDICATE MILLIMETRES  
DECIMALIZED NUMBERS INDICATE METRES

**ENGINEERS**  
GEO-SCIENTISTS  
MANITOBA  
Certificate of Authorization  
Stantec Consulting Ltd.  
No. 1301

LOCATION APPROVED  
UNDERGROUND STRUCTURES

SUPV. U/G STRUCTURES COMMITTEE DATE  
NOTE:  
LOCATION OF UNDERGROUND STRUCTURES AS SHOWN ARE BASED ON THE BEST INFORMATION AVAILABLE BUT NO GUARANTEE IS GIVEN THAT ALL EXISTING UTILITIES ARE SHOWN OR THAT THE GIVEN LOCATIONS ARE EXACT. CONFIRMATION OF EXISTENCE AND EXACT LOCATION OF ALL SERVICES MUST BE OBTAINED FROM THE INDIVIDUAL UTILITIES BEFORE PROCEEDING WITH CONSTRUCTION.

B.M. 37-35 N.E. Cor. St. Matthews Ave. & Telfer St. N., Tdlt. in W. Conc. foundation No. 1205 St. Matthews Ave., 0.7m N. & 0.2m below stucco of S.W. Cor. of dwelling.  
ELEV. 233.133m

NO.	ISSUED FOR TENDER	DATE	BY
00	ISSUED FOR TENDER	2023.04.05	RS



DESIGNED BY RS  
CHECKED BY RS  
DRAWN BY BP/OS  
APPROVED BY RS  
SCALE:  
HORIZONTAL 1:250  
VERTICAL 1:50  
DATE 2023.03.21  
RELEASED FOR CONSTRUCTION  
DATE 2023.04.04

ENGINEER'S SEAL

CONSULTANT DRAWING NUMBER  
C-205



**THE CITY OF WINNIPEG**  
WATER AND WASTE DEPARTMENT  
ENGINEERING DIVISION

2023 WATER MAIN RENEWALS  
CONTRACT 8  
CLIFTON STREET  
45.4 S OF WOLEVER TO  
WOLEVER AVENUE

SHEET 7 OF 15

CITY DRAWING NUMBER

D-16604

TENDER NUMBER: 175-2023  
CONTRACT NUMBER: 8

FILE PATH: \\c0045-ppfs01\workgroup\1112\active\111220781\0300\_drawing\0302\_sheet\_files\02\_civil\20781c-201