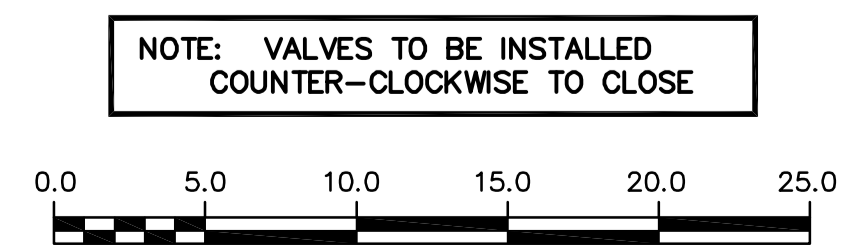
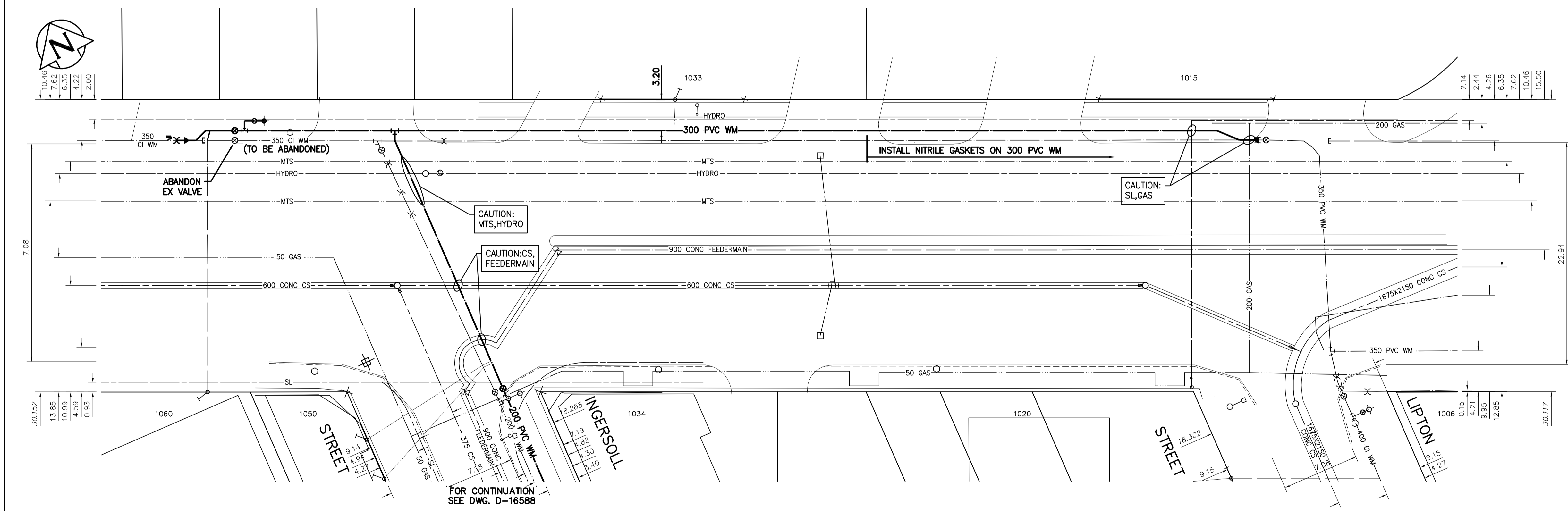


WATER SERVICE INFORMATION					
ADDRESS	PIPE SIZE & MATERIAL (STREET)	PIPE SIZE & MATERIAL (PROP.)	SHORT & LONG MEASUREMENT	CORP. LOCATION	REMARKS
1034 NOTRE DAME COMMERCIAL	CU 38	CU 38	3.35 NSL BLDG 24.8 SSL NOTRE DAME	OPP S/C	RECONNECT SERVICE
1050 NOTRE DAME COMMERCIAL	CU 20	CU 20	0.15 NSL OF WINDOW 5.33 SSL OF NOTRE DAME	3.05 SSL NOTRE	RECONNECT SERVICE
1033 NOTRE DAME COMMERCIAL	CU 25	CU 25	10.06 WEL OF BLDG 24.69 EEL INGERSOLL	0.15 W OF S/C	RECONNECT SERVICE
1060 NOTRE DAME COMMERCIAL	CU 50				RECONNECT SERVICE
1020 NOTRE DAME COMMERCIAL					OUTSIDE LIMIT OF WORK
1015 NOTRE DAME COMMERCIAL					OUTSIDE LIMIT OF WORK

NOTE: CHAINAGES SHOWN ARE ALONG CENTRE LINE OF ROW

NOTRE DAME AVENUE



NOTE: VALVES TO BE INSTALLED COUNTER-CLOCKWISE TO CLOSE

FOR INDEX SEE D-16584

METRIC
WHOLE NUMBERS INDICATE MILLIMETRES
DECIMALIZED NUMBERS INDICATE METRES

ENGINEERS GEOSCIENTISTS MANITOBA
Certificate of Authorization
Stantec Consulting Ltd.
No. 1301

LOCATION APPROVED UNDERGROUND STRUCTURES

SUPV. U/G STRUCTURES COMMITTEE DATE

NOTE:
LOCATION OF UNDERGROUND STRUCTURES AS SHOWN ARE BASED ON THE BEST INFORMATION AVAILABLE BUT NO GUARANTEE IS GIVEN THAT ALL EXISTING UTILITIES ARE SHOWN OR THAT THE GIVEN LOCATIONS ARE EXACT. CONFIRMATION OF EXISTENCE AND EXACT LOCATION OF ALL SERVICES MUST BE OBTAINED FROM THE INDIVIDUAL UTILITIES BEFORE PROCEEDING WITH CONSTRUCTION.

00	ISSUED FOR TENDER	2023.04.05	RS
NO.	REVISIONS	DATE	BY

Stantec

DESIGNED BY: RS
CHECKED BY: RS
DRAWN BY: OS
APPROVED BY: RS
SCALE: HORIZONTAL 1:250, VERTICAL 1:50
DATE: 2023.02.21

ENGINEER'S SEAL

CONSULTANT DRAWING NUMBER: C-205

THE CITY OF WINNIPEG
WATER AND WASTE DEPARTMENT
ENGINEERING DIVISION

2023 WATER MAIN RENEWALS
CONTRACT 7
NOTRE DAME AVENUE
INGERSOLL STREET TO
LIPTON STREET

SHEET 7 OF 15
CITY DRAWING NUMBER
D-16589