

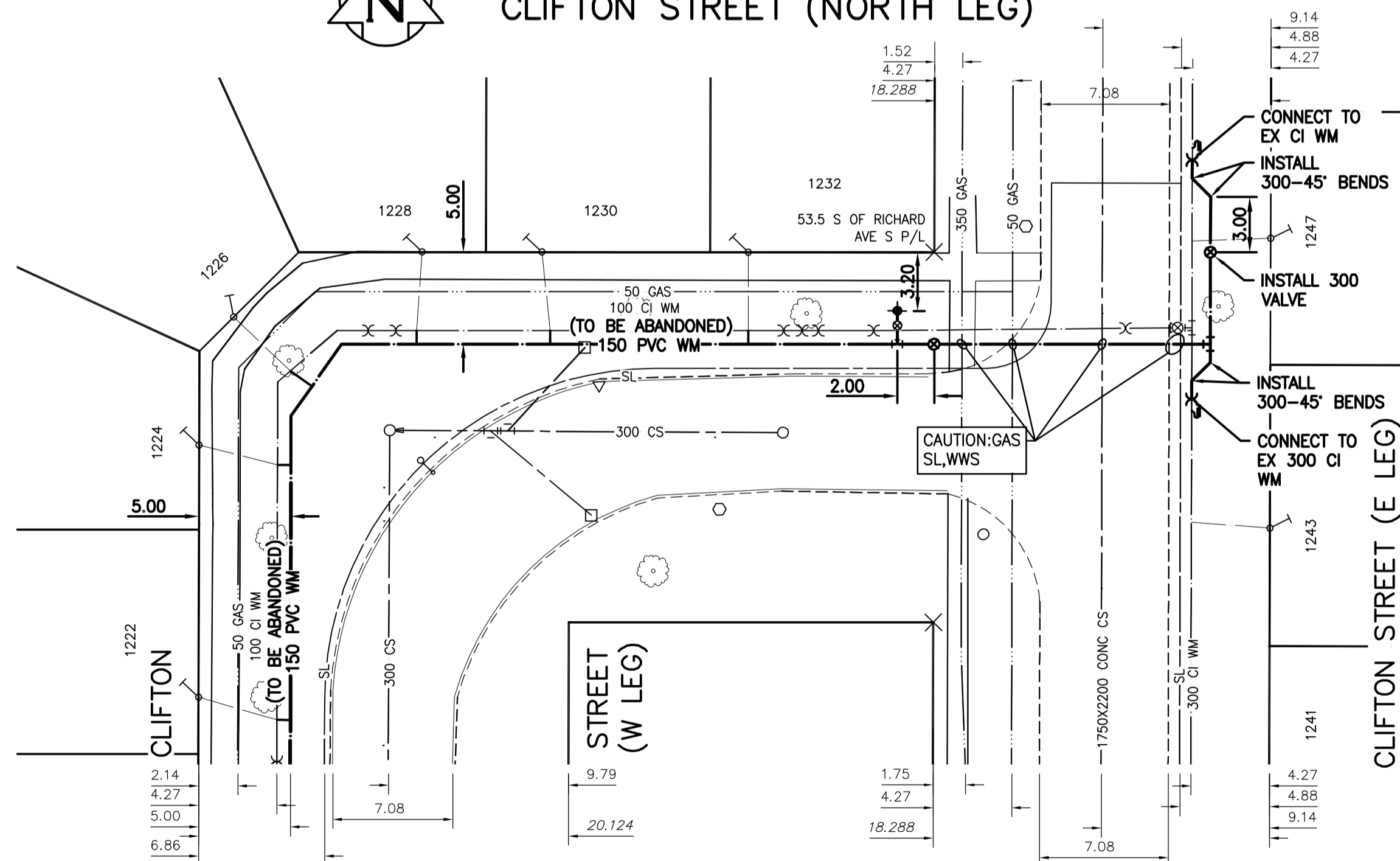
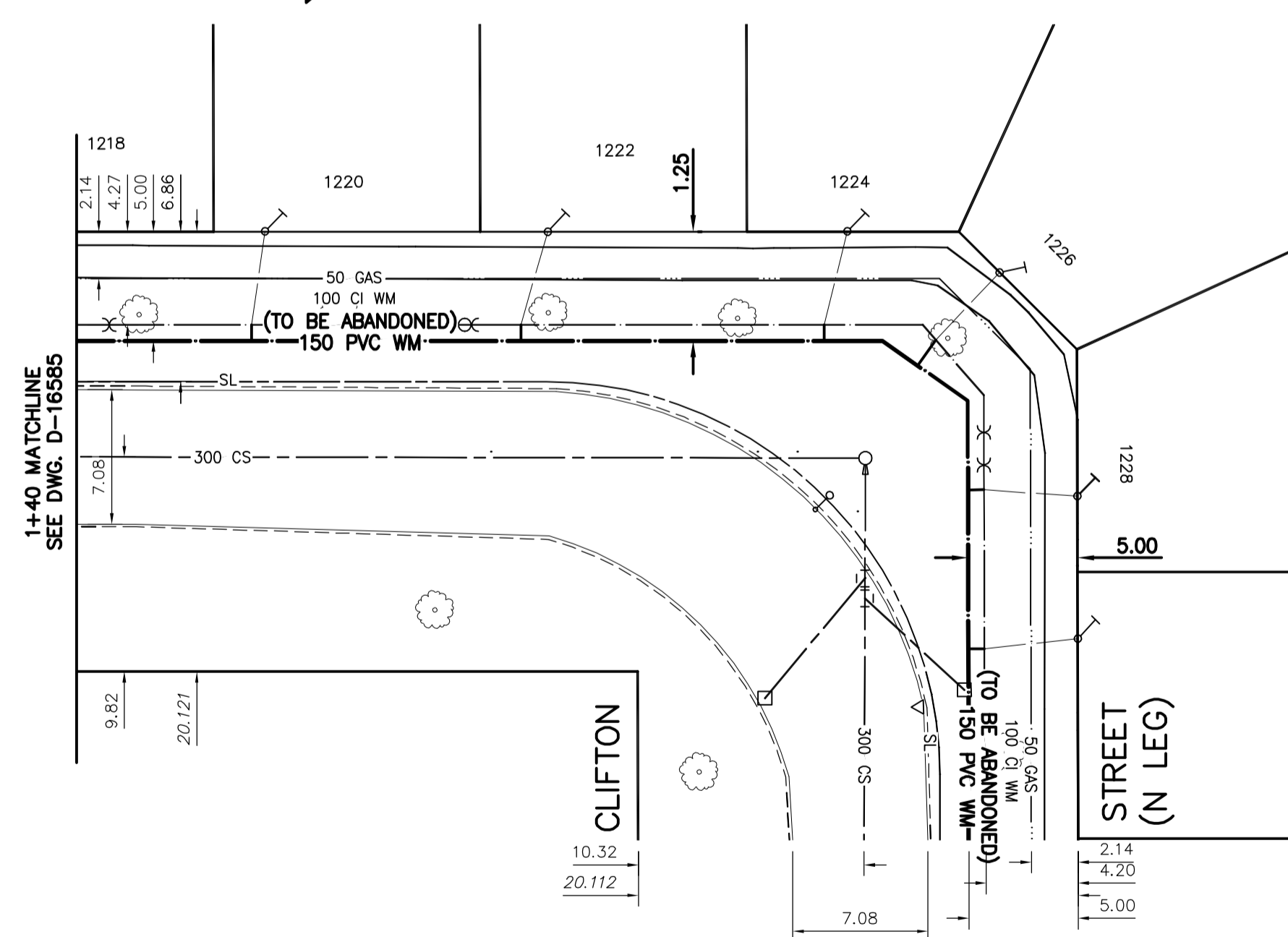
NOTE: CHAINAGES SHOWN ARE ALONG CENTRE LINE OF ROW



CLIFTON STREET (WEST LEG)



CLIFTON STREET (NORTH LEG)



WATER SERVICE INFORMATION					
ADDRESS	PIPE SIZE & MATERIAL (STREET)	PIPE SIZE & MATERIAL (PROP.)	SHORT & LONG MEASUREMENT	CORP. LOCATION	REMARKS
1220 CLIFTON ST RESIDENTIAL	20	CU	0.61 NSHL	0.61 S SC	RECONNECT SERVICE
1222 CLIFTON ST RESIDENTIAL	20	CU	7.1 NSHL	1.22 S SC	RECONNECT SERVICE
1223 CLIFTON ST RESIDENTIAL	16	LEAD	2.13 NSHL	OPP SC	OUTSIDE LIMIT OF WORK
1224 CLIFTON ST RESIDENTIAL	20	CU	139.29 SSL RICHARD AV	1.07 S SC	RECONNECT SERVICE
1226 CLIFTON ST RESIDENTIAL	20	CU	3.35 NSHL	OPP SC	RECONNECT SERVICE
1226 CLIFTON ST RESIDENTIAL	20	CU	7.62 SNHL	OPP SC	RECONNECT SERVICE
1227 CLIFTON ST RESIDENTIAL	20	CU	0.7 SSBL #1227	0.1m S CURB STOP	OUTSIDE LIMIT OF WORK
1228 CLIFTON ST RESIDENTIAL	20	CU	7.5 NSHL #1227	0.3 W SC	RECONNECT SERVICE
1230 CLIFTON ST RESIDENTIAL	20	CU	1.83 WEHL	0.46 E SC	RECONNECT SERVICE
1232 CLIFTON ST RESIDENTIAL	20	CU	21.34 WWL CLIFTON ST	OPP SC	RECONNECT SERVICE
1241 CLIFTON ST RESIDENTIAL	20	CU	7.16 WEHL	OPP SC	RECONNECT SERVICE
1241 CLIFTON ST RESIDENTIAL	20	CU	2.13 NNHL 1239 CLIFTON ST	OPP SC	OUTSIDE LIMIT OF WORK
1243 CLIFTON ST RESIDENTIAL	20	CU	39.32 N HYD OPP 1227 CLIFTON ST	0.31 N SC	OUTSIDE LIMIT OF WORK
1247 CLIFTON ST RESIDENTIAL	20	CU	4.88 NSHL	0.15 S SC	RECONNECT SERVICE
1247 CLIFTON ST RESIDENTIAL	20	CU	6.71 SNHL		
1247 CLIFTON ST RESIDENTIAL	20	CU	5.33 NSHL		
1247 CLIFTON ST RESIDENTIAL	20	CU	5.33 SNHL		

NOTE: VALVES TO BE INSTALLED COUNTER-CLOCKWISE TO CLOSE

FOR INDEX SEE D-16584



METRIC  
WHOLE NUMBERS INDICATE MILLIMETRES  
DECIMALIZED NUMBERS INDICATE METRES

**ENGINEERS**  
GEOSCIENTISTS  
MANITOBA  
Certificate of Authorization  
Stantec Consulting Ltd.  
No. 1301

LOCATION APPROVED UNDERGROUND STRUCTURES		B.M. 37-35 ELEV. 233.133m		N.E. Cor. St. Matthews Ave. & Telfer St. N., Tdlt. in W. Conc. foundation No. 1205 St. Matthews Ave., 0.7m N. & 0.2m below stucco of S.W. Cor. of dwelling.	
SUPV. U/G STRUCTURES COMMITTEE	DATE	DESIGNED BY	RS	CHECKED BY	RS
NOTE:	LOCATION OF UNDERGROUND STRUCTURES AS SHOWN ARE BASED ON THE BEST INFORMATION AVAILABLE BUT NO GUARANTEE IS GIVEN THAT ALL EXISTING UTILITIES ARE SHOWN OR THAT THE GIVEN LOCATIONS ARE EXACT. CONFIRMATION OF EXISTENCE AND EXACT LOCATION OF ALL SERVICES MUST BE OBTAINED FROM THE INDIVIDUAL UTILITIES BEFORE PROCEEDING WITH CONSTRUCTION.	DRAWN BY	OS	APPROVED BY	RS
00	ISSUED FOR TENDER	2023.04.05	RS	RELEASED FOR CONSTRUCTION	2023.04.04
NO.	REVISIONS	DATE	BY	DATE	2023.02.21

**Stantec**

DESIGNED BY: RS  
CHECKED BY: RS  
DRAWN BY: OS  
APPROVED BY: RS  
SCALE: HORIZONTAL 1:250, VERTICAL 1:50  
DATE: 2023.04.04

ENGINEER'S SEAL  
CONSULTANT DRAWING NUMBER: C-202

**THE CITY OF WINNIPEG**  
WATER AND WASTE DEPARTMENT  
ENGINEERING DIVISION

2023 WATER MAIN RENEWALS  
CONTRACT 7  
CLIFTON STREET (1ST BAY S OF RICHARD AVE)  
45.3 N OF CLIFTON STREET (S LEG) TO  
CLIFTON STREET (E LEG)

SHEET 4 OF 15  
CITY DRAWING NUMBER: D-16586