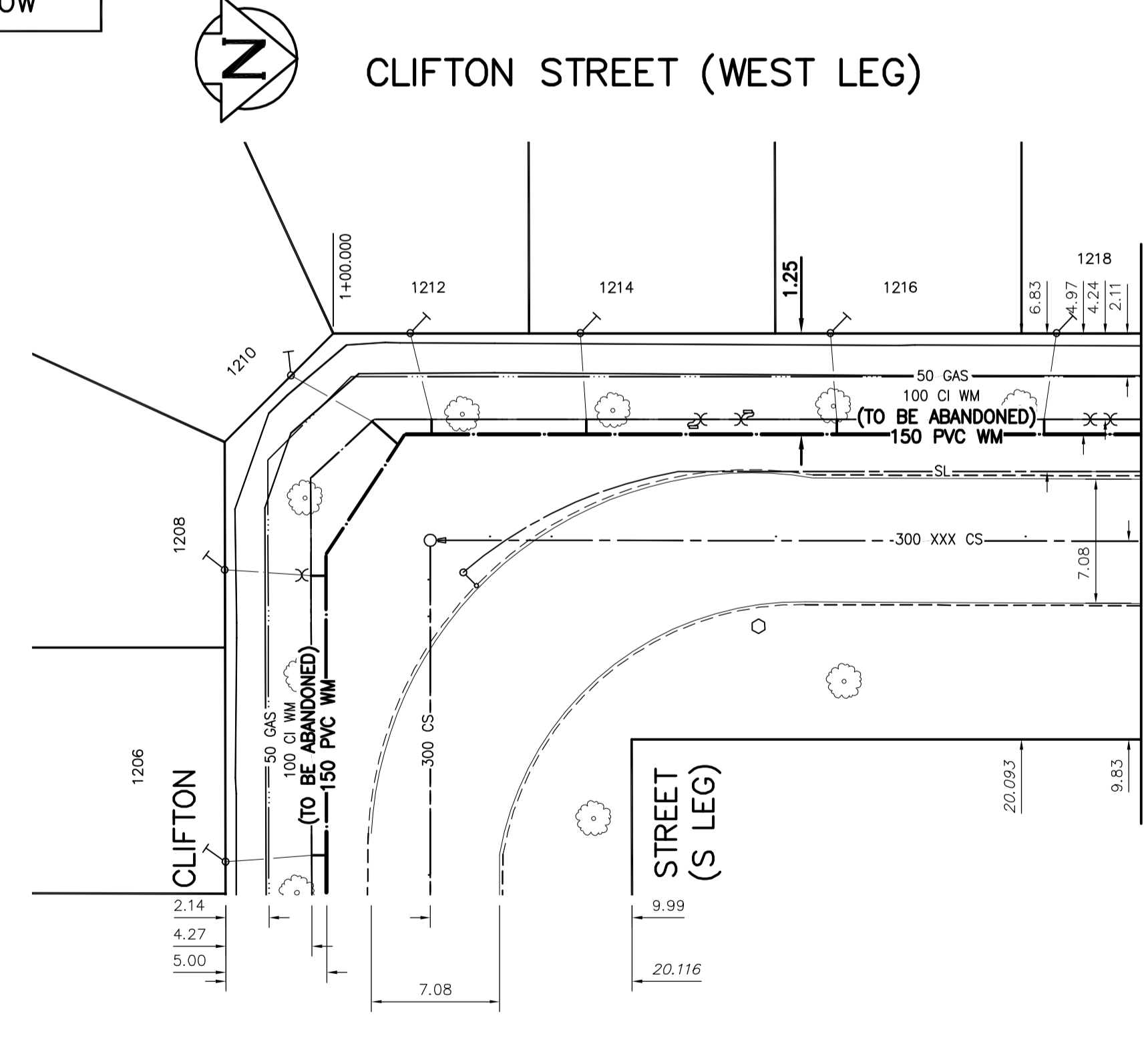
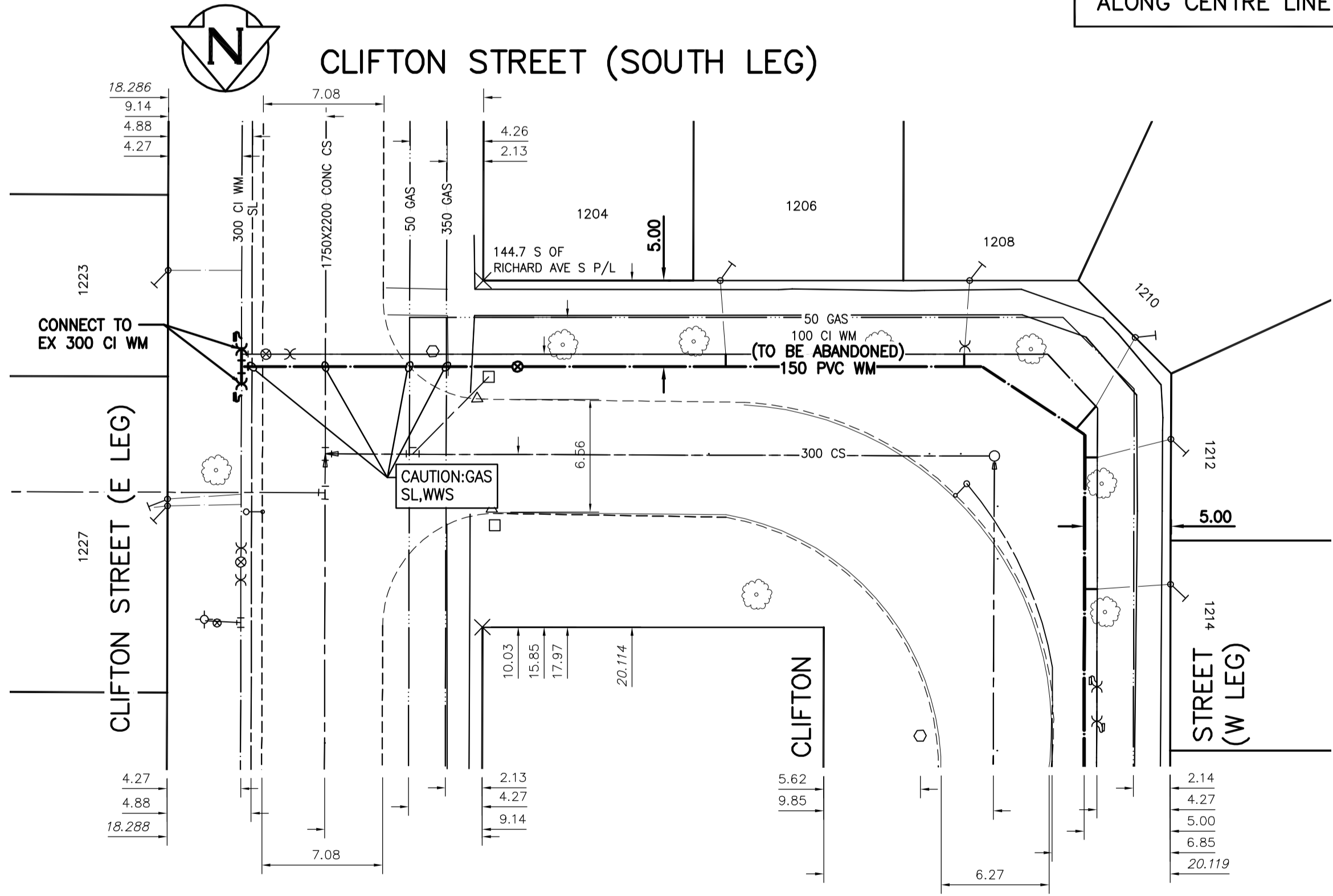


NOTE: CHAINAGES SHOWN ARE ALONG CENTRE LINE OF ROW



ADDRESS	PIPE SIZE & MATERIAL (STREET)	PIPE SIZE & MATERIAL (PROP.)	SHORT & LONG MEASUREMENT	CORP. LOCATION	REMARKS
1204 CLIFTON ST RESIDENTIAL	CU 20	CU 20	3.2 NSHL 17.68 SSL S LEG CLIFTON	0.91 S SC	RECONNECT SERVICE
1206 CLIFTON ST RESIDENTIAL	CU 20	CU 20	0.3 WEHL 13.72 WWL CLIFTON ST	0.3 W SC	RECONNECT SERVICE
1208 CLIFTON ST RESIDENTIAL	CU 20	CU 20	1.98 WEHL 9.14 EWHL	0.3 E SC	RECONNECT SERVICE
1210 CLIFTON ST RESIDENTIAL	CU 20	CU 20	4.27 WEHL 37.8 WWL CLIFTON ST	1.22 W SC	RECONNECT SERVICE
1212 CLIFTON ST RESIDENTIAL	CU 20	CU 20	1.52 NSHL 6.71 NSHL	1.07 N SC	RECONNECT SERVICE
1214 CLIFTON ST RESIDENTIAL	CU 20	CU 20	0.3 NSHL 7.47 SNHL	0.3 N SC	RECONNECT SERVICE
1216 CLIFTON ST RESIDENTIAL	CU 20	CU 20	1.68 NSHL 7.47 SNHL	0.3 N SC	RECONNECT SERVICE
1218 CLIFTON ST RESIDENTIAL	CU 20	CU 20	OPP SHL 8.53 NSHL	0.61 S SC	RECONNECT SERVICE

NOTE: VALVES TO BE INSTALLED COUNTER-CLOCKWISE TO CLOSE

FOR INDEX SEE D-16584



METRIC  
WHOLE NUMBERS INDICATE MILLIMETRES  
DECIMALIZED NUMBERS INDICATE METRES

**ENGINEERS GEOSCIENTISTS MANITOBA**  
Certificate of Authorization  
Stantec Consulting Ltd.  
No. 1301

LOCATION APPROVED  
UNDERGROUND STRUCTURES

SUPV. U/G STRUCTURES COMMITTEE DATE

NOTE:  
LOCATION OF UNDERGROUND STRUCTURES AS SHOWN ARE BASED ON THE BEST INFORMATION AVAILABLE BUT NO GUARANTEE IS GIVEN THAT ALL EXISTING UTILITIES ARE SHOWN OR THAT THE GIVEN LOCATIONS ARE EXACT. CONFIRMATION OF EXISTENCE AND EXACT LOCATION OF ALL SERVICES MUST BE OBTAINED FROM THE INDIVIDUAL UTILITIES BEFORE PROCEEDING WITH CONSTRUCTION.

B.M. 37-35 ELEV. 233.133m	N.E. Cor. St. Matthews Ave. & Telfer St. N., Tdlt. in W. Conc. foundation No. 1205 St. Matthews Ave., 0.7m N. & 0.2m below stucco of S.W. Cor. of dwelling.		
DESIGNED BY	RS		
CHECKED BY	RS		
DRAWN BY	OS		
APPROVED BY	RS		
SCALE:			
HORIZONTAL	1:250		
VERTICAL	1:50		
RELEASED FOR CONSTRUCTION	<i>R. Lucky</i> 2023.04.04		
DATE	2023.02.21		
DATE	2023.04.04		
NO.	REVISIONS	DATE	BY
00	ISSUED FOR TENDER	2023.04.05	RS

**Stantec**

DESIGNED BY: RS  
CHECKED BY: RS  
DRAWN BY: OS  
APPROVED BY: RS  
SCALE: HORIZONTAL 1:250, VERTICAL 1:50  
RELEASED FOR CONSTRUCTION: *R. Lucky* 2023.04.04  
DATE: 2023.02.21

ENGINEER'S SEAL

CONSULTANT DRAWING NUMBER: C-201

**THE CITY OF WINNIPEG**  
WATER AND WASTE DEPARTMENT  
ENGINEERING DIVISION

2023 WATER MAIN RENEWALS  
CONTRACT 7  
CLIFTON STREET (1ST BAY S OF RICHARD AVE)  
CLIFTON STREET (E LEG) TO  
45.3 N OF CLIFTON STREET (S LEG)

SHEET 3 OF 15  
CITY DRAWING NUMBER  
D-16585