

TYPICAL SITE NOTES

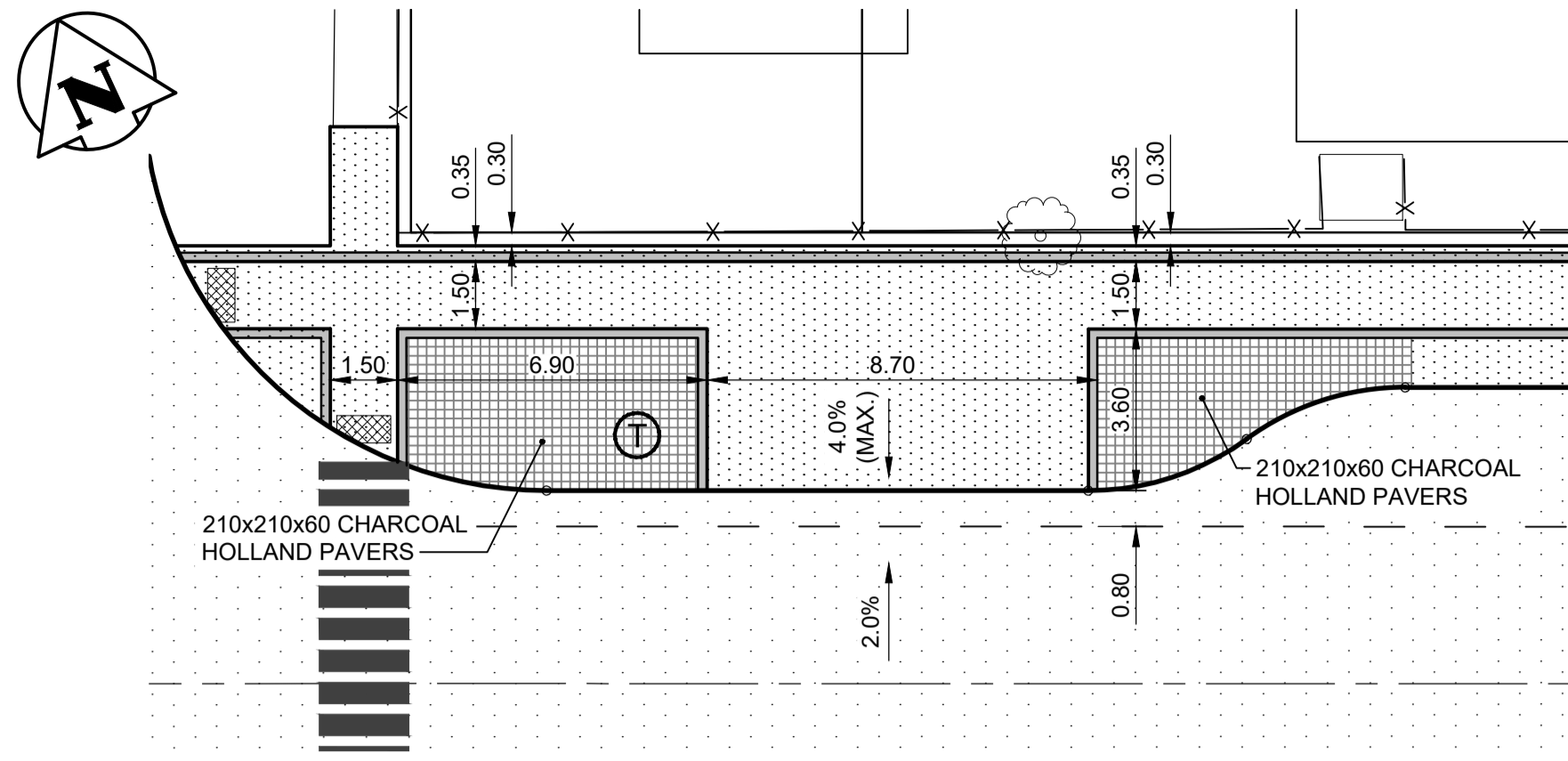
- TYPICAL PILE INSTALLATION LOCATION SHOWN. CONTRACT ADMINISTRATOR MAY MODIFY DEPENDING ON SITE APPURTENANCES.
- ISOLATE PILE AS PER SD-228C.
- MUST MAINTAIN MIN. 1.50m SIDEWALK CLEARANCE FOR SNOW REMOVAL EQUIPMENT.

PILE CONSTRUCTION NOTES

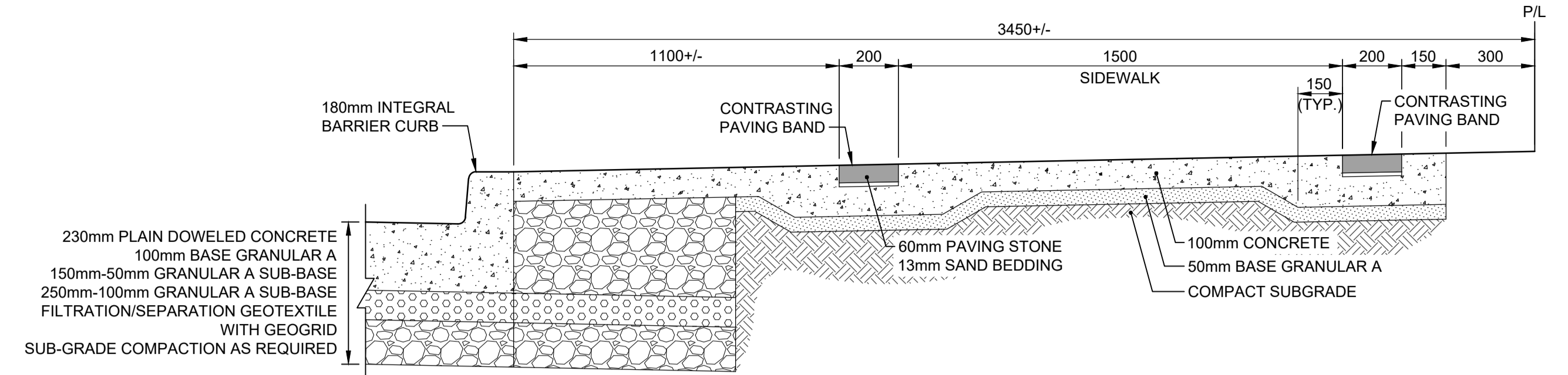
- REINFORCING STEEL**
 - CSA G30, T2 GR. 400
 - VERTICAL BARS FULL LENGTH OF PILE
 - HOT DIP GALVANIZED
- ANCHOR BOLTS**
 - CSA G40.21 GR. 300W
 - 4-32 (1 1/2") DIA. x 1500 LONG + 150 HOOK
 - EACH BOLT C/W 2 NUTS & 2 WASHERS
 - TOP 300 THREAD
 - HOT DIP GALVANIZED FULL LENGTH
 - BCD = BOLT CIRCLE DIAMETER TO CENTRE OF BOLT GROUP
- ANCHOR BOLTS SHALL BE ALIGNED WITH A TEMPORARY STEEL TEMPLATE. PLACEMENT OF ANCHOR BOLTS AND CONCRETE WITHOUT THE TEMPLATE WILL NOT BE PERMITTED.
- TOP OF PILE SHALL BE FORMED WITH A TUBULAR FORM (SONOTUBE) AS FOLLOWS:
 - BORED PILES - MIN. 100mm BELOW FINAL GRADE
 - "HYDRO-JET EXCAVATED" PILES - MIN. 150mm BELOW FINAL GRADE
- CONTRACTOR SHALL REMOVE THE BASE TEMPLATE, NUTS AND FORM, FOLLOWING A MINIMUM 24 HOUR CONCRETE CURING PERIOD.
- CONCRETE**

CONCRETE MATERIAL SHALL HAVE THE FOLLOWING MINIMUM PROPERTIES IN ACCORDANCE WITH CSA A23.1-04:

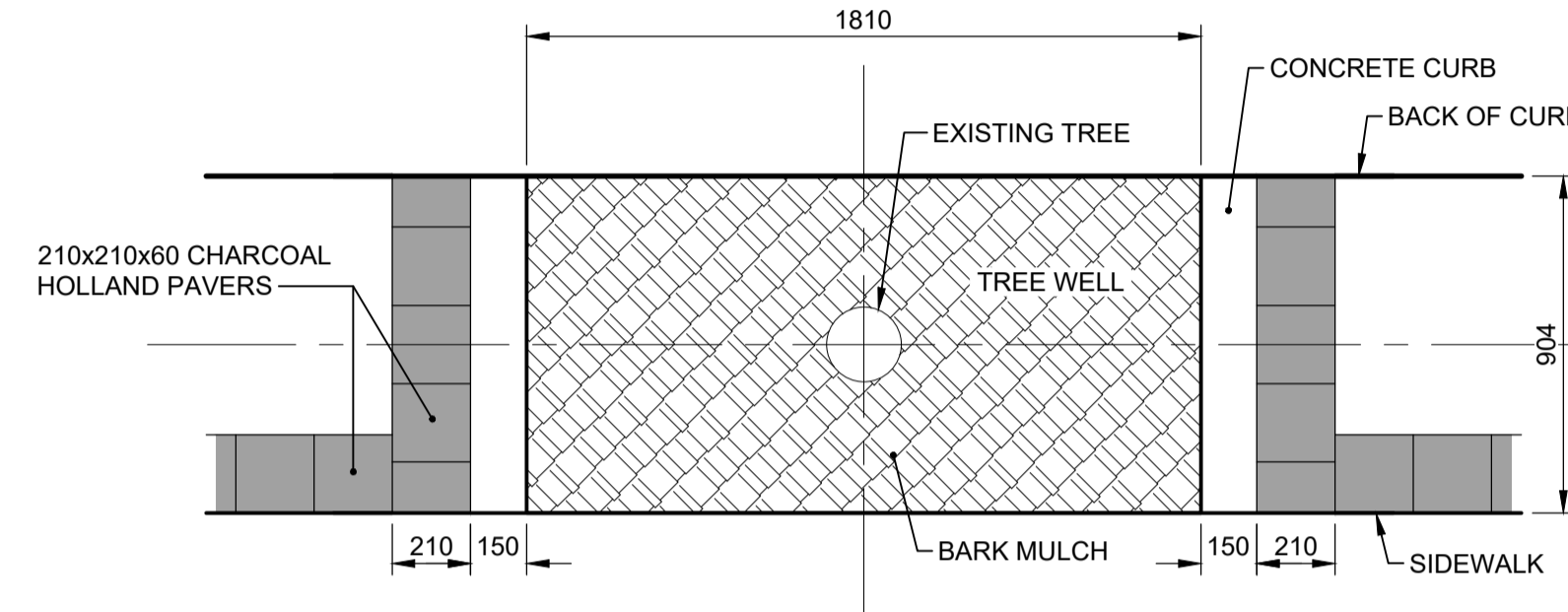
 - CLASS OF EXPOSURE: S-1
 - COMPRESSIVE STRENGTH @ 56 DAYS = 35 MPa
 - WATER/CEMENTING MATERIALS RATIO = 0.4
 - AIR CONTENT: CATEGORY 2 PER TABLE 4 OF CSA A23, 1-04 (4-7%)
 - CEMENT - TYPE HS OR HSb, HIGH SULPHATE RESISTANT.



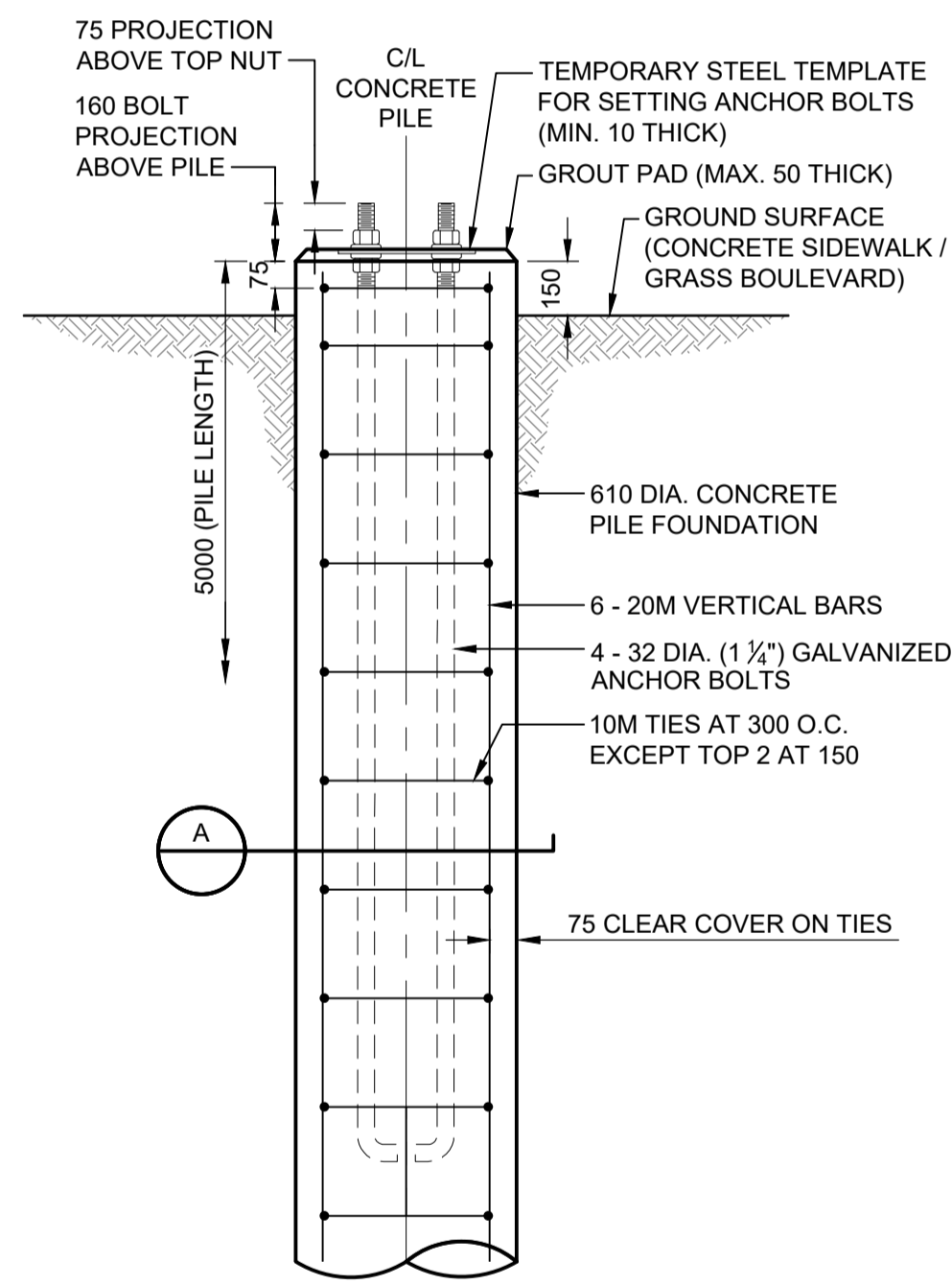
1 TYPICAL TRANSIT STOP DETAIL
SCALE 1:150



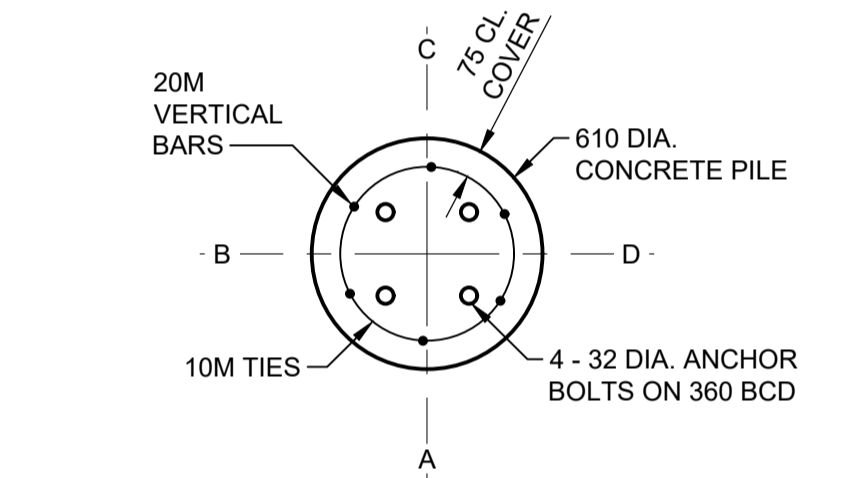
2 PAVING BAND DETAIL
SCALE 1:15



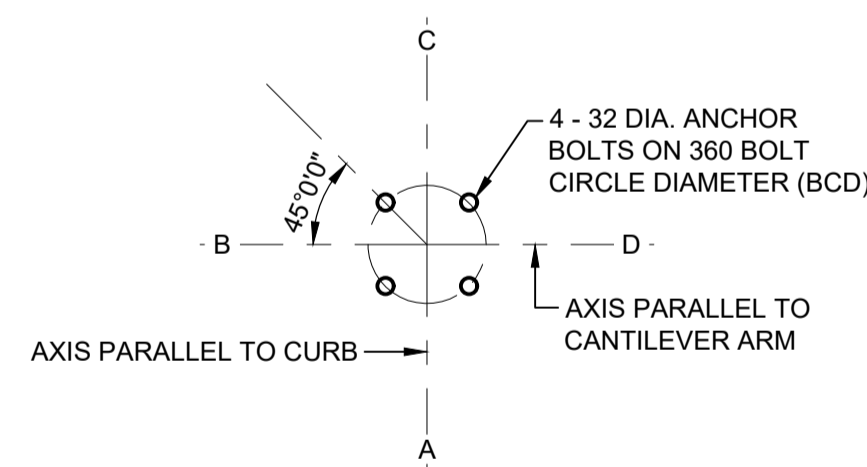
5 TREE WELL A (KING ST. TO MAIN ST. - SOUTH SIDE)
SCALE 1:20



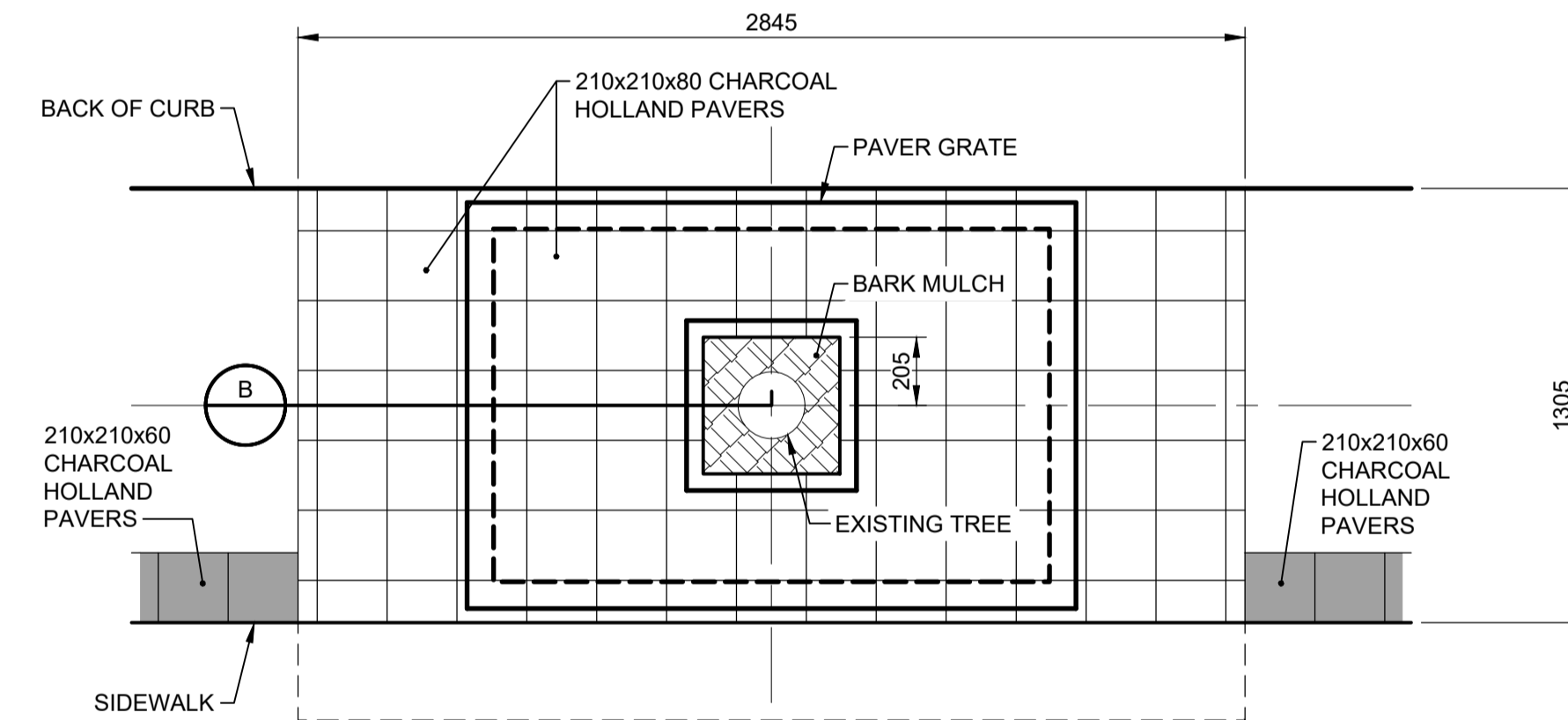
3 CONCRETE PILE FOUNDATION ELEVATION DETAIL
SCALE 1:20



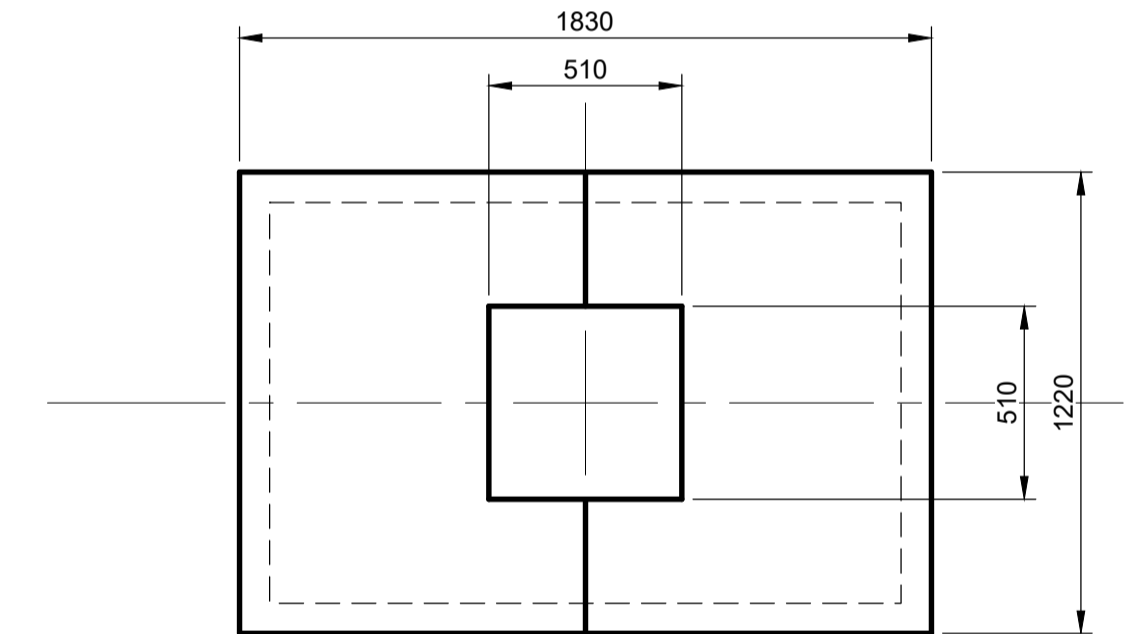
A CONCRETE PILE FOUNDATION CROSS SECTION DETAIL
SCALE 1:20



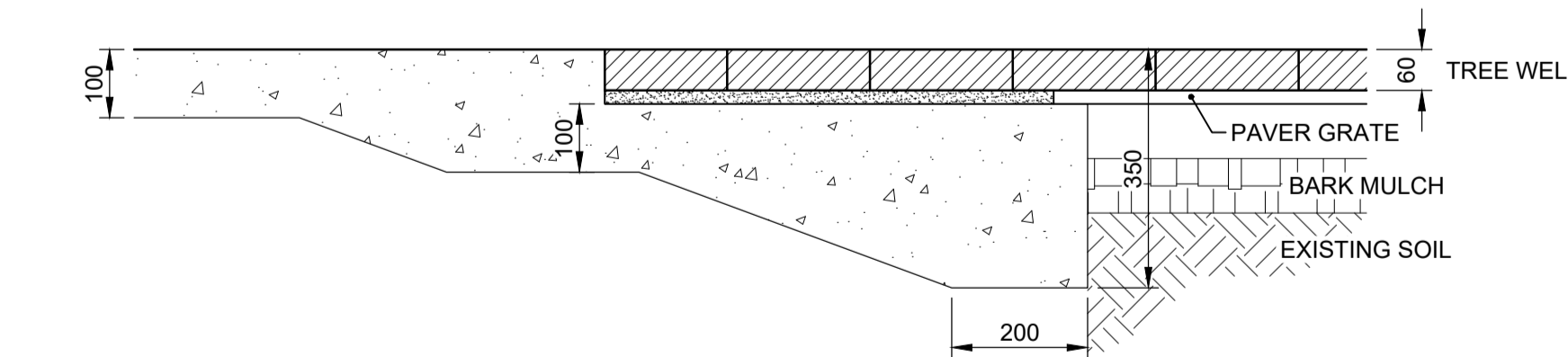
4 ANCHOR BOLT LAYOUT DETAIL
SCALE 1:20



6 TREE WELL B (SALTER ST. TO MAIN ST.) PAVERS OVER PAVER GRATE DETAIL
SCALE 1:20



7 PAVER GRATE DETAIL
SCALE 1:20



B TREE WELL B WITH PAVER GRATE CROSS SECTION DETAIL
SCALE 1:10

WARNING

IF POWER EQUIPMENT OR EXPLOSIVES ARE TO BE USED FOR EXCAVATION ON THIS PROJECT THE CONTRACTOR MUST:

- NOTIFY THE GAS COMPANY OF THE PROPOSED LOCATION OF EXCAVATION.
 - TAKE PRECAUTION TO AVOID DAMAGE TO GAS COMPANY INSTALLATIONS.
- SEE PROVINCIAL REGULATION 140/92 FOR DETAILS

METRIC

WHOLE NUMBERS INDICATE MILLIMETRES
DECIMALIZED NUMBERS INDICATE METRES

LOCATION APPROVED UNDERGROUND STRUCTURES

SUPV. U/G STRUCTURES COMMITTEE DATE

NOTE:
LOCATION OF UNDERGROUND STRUCTURES AS SHOWN ARE BASED ON THE BEST INFORMATION AVAILABLE BUT NO GUARANTEE IS GIVEN THAT ALL EXISTING UTILITIES ARE SHOWN OR THAT THE GIVEN LOCATIONS ARE EXACT. CONFIRMATION OF EXISTENCE AND EXACT LOCATION OF ALL SERVICES MUST BE OBTAINED FROM THE INDIVIDUAL UTILITIES BEFORE PROCEEDING WITH CONSTRUCTION.

B.M. ELEV.	NO.	REVISIONS	YY/MM/DD	BY	DATE
	0	ISSUED FOR TENDER	23.03.10	K.W.R.	

Stantec
500 - 311 Portage Avenue, Winnipeg M8 Canada R3B 2B9
Tel. 204.489.5900 Fax. 204.453.9012 www.stantec.com

DESIGNED BY	K.W.R.	CHECKED BY	J.D.
DRAWN BY	A.M.	APPROVED BY	K.W.R.
HOR. SCALE:	AS NOTED	RELEASED FOR CONSTRUCTION:	
VERTICAL:		DATE	2023.03.10

ENGINEER
K.W. RAE
REGISTERED PROFESSIONAL ENGINEER
2023-03-09
CONSULTANT DRAWING NO. C-501

THE CITY OF WINNIPEG
PUBLIC WORKS DEPARTMENT
ENGINEERING DIVISION

2023 REGIONAL STREET RENEWAL PROGRAM
SELKIRK AVENUE PAVEMENT RENEWALS

SELKIRK AVENUE
SALTER STREET TO MAIN STREET
MISCELLANEOUS SECTIONS AND DETAILS

SHEET OF 16 17
CAD FILE DRAWING NUMBER 08603c-501_12.dwg
CITY DRAWING NUMBER P-3563-42

VA 1371.ecb.mca.113796.03.0300_drawing.0302_31.mxd File:02_civil\Vendor_2_Selkirk_08603c-501_12.dwg 2023.03.09 2:09 PM B:\V\Address_Arty